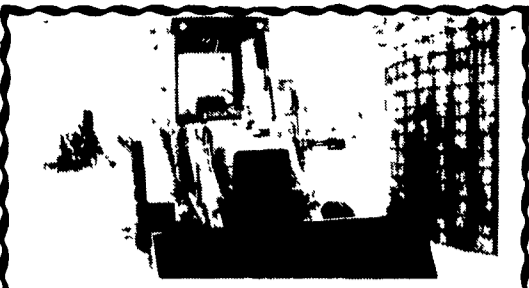


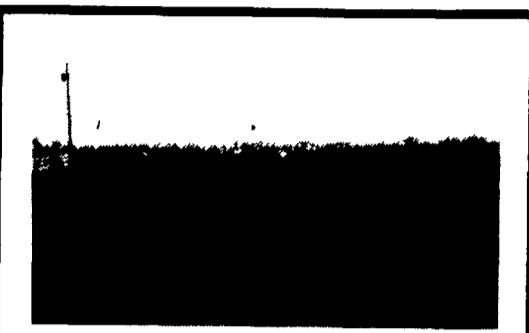
**1980 White
7300 Combine**
4 row wide corn
head, 13' grain
head
717-864-3406



FORD LOADERS AND BACKHOES
1 - 550
3 - 555 (2 w/Extend-A-Hoe)
(717) 933-8853
(717) 933-4062

Case 1537 Skid Steer,
Fire Damage \$850.
Int. 300 forklift \$3,995
Int 574 Gas \$3800
JD 350B 6 way ROPS w/
winch \$9,500
JD, IH & Case WFE's -
call
20.8x34's on double
bevel rims \$510
JD 4020 Diesel Power
Shift, as is \$3,850
Loader w/blade, off
Oliver OC3 \$100
JD G \$1,750
JD B, late style, 3 pt.
\$2,000
JD 50 \$2,000
JD BO \$2,000
Pequea Bale Wagons &
running gears

**GOODRICH
AUCTION
SERVICE**
Rt 38 & 38B
Newark Valley
NY
607-642-3293



NH 260 & 258 Rake Combo,
Hyd. Drive, 3PT Hitch, Rubber Teeth,
\$3,950
(717) 733-7408

Martin Tractor

RD 2, Box 247 Newville, PA 17241

Used Tractors

IH 1066, 966, 350; Oliver 770, 880; Long
445 4WD, MM 4 Star, JD 4010 gas.

**Currently Dismantling
Tractors For Parts**

AC: B, WD, D14, D15, D19, D21, 5040, XT190, 200,
7040; CASE: VC, VAC, SC, 600, 700, 730, 870,
1070, 1370, 1410; DEUTZ: 5506; FORD: Jubilee,
851, 971, 4000, 5000, 6000, 9600; IH: H, M, Super
C, UD9 power unit, B275, 300, 350, 400, 404, 450,
460, 504, 544, 580, 584, 656, 686, 706, 806, 1026,
1206, 1256, 1586; JD: A, B, 40, 50, 60, 420, 520,
620, 720, 730, 2010, 2020, 2040, 2510, 3010, 4010,
3020, 4020, 4430, 4630, 5020; Long: 460; ME: 65,
85, 165, 175, 178, 180, 1080; MH: 44; MM: 4 Star, 5
Star, Jetstar 3, 445, 602, 670, G1000; Oliver: 60,
66, 70, 77, 88, 770, 1450, 1550, 1600, 1650, 1750,
1800, 1850, 1855, 1950, 1955.

717-776-7542

No Sunday Calls Will Ship UPS
No Out Of State Personal Checks



1969 IH 856 Gas, 18.4x38 Tires, Dual
PTO, Dual Remote, 3900 Hours, Good
TA, Runs Good.
Only \$5,900

Wengers, Inc.

251 S. Race St., Myerstown, Pa. 17067
PH 717-866-2135

Best Buys in Used Equipment

TRACTORS

- IH 284 Diesel w/5 ft. mower
- Yanmar 220
- IH ~~SOLD~~
- IH ~~SOLD~~ Hydro
- IH 484
- IH 254 & loader
- IH 234 ~~SOLD~~ Do & Mower
- Ford 2000 & Loader
- Farmall M
- Farmall 300
- Yanmar 186
- Yanmar 180
- Yanmar 155 4WD
- Yanmar 146 w/48" Mower

IMPLEMENTS

- JD 3 pt. 3 btm. plow
- JD 220 Disc, 18'6"
- Pull type sprayer
- NH 462 Disc mower
- NH 35 rotary mower
- NH 489 mower conditioner
- IH 1190 ~~SOLD~~ mower conditioner
- IH 35 rake
- NI 213 spreader

BIGGS INCORPORATED

34 Buckley Ave.
Rising Sun, MD
301-658-5531



Best Buys in Used Equipment

TRACTORS:

- IH Farmall "C"
- Int. F12 w/Cult., \$450 - Runs
- IH 350 High Utility w/Ldr., PS, Fast Hitch
- IH 404 w/2000 Loader
- Cub w/Mott Mower- Real Nice
- Cub Lo-Boy w/Mott Mower
- Cub w/60" Deck
- Farmall Cub w/Gang Mower
- David Brown 990 - Fair Cond.
- Cub Equipment - Plow, Cult., Disc, Etc.
- Ford 801 Diesel Utility
- Ford 9N - Coming In
- Ford 2110 w/Ford Loader

OUTDOOR POWER EQUIP.-

- Cub Cadet, Model 1872 w/50" Deck
- Cub Cadet, Model 2072 w/50" Deck, Rental Unit
- Cub Cadet 108 Mower
- Cub Cadet 105 w/Mower
- Cub Cadet 982, 20 Hp., w/50" Mower-Rental, \$3,200 - Reduced to \$2,950
- Cub Cadet 482 & 582
- JD 110 w/Mower
- JD 210 w/Mower
- Woods 210 Offset Mower
- Jacobsen 1974 F-20 Fairway Mower
- Toro 7 Gang Pull-Type Golf Course Mower

Good Selection of
Used Cub Cadets In Stock

HAY & FORAGE:

- Gehl FBB 88 Blower
- 550 IH Chopper (Parts)
- Hesston PT-10, \$1,500 - Now \$1,000!
- NH 69 Baler w/o Thrower
- IH 27 Baler - Real Nice
- IH 430 Baler w/Thrower
- IH 445 Baler, 1 Yr. Old
- IH Direct Cut Head For 15 or 16 Chopper
- IH 56 Blower - Nice Shape!
- Fox Blower- Nice Shape!
- JD 1209 Mower Cond., 9 Ft. - \$3,250 - Reduced to \$2,950!
- Pittsburg 3 pt. Wheel Rake- \$650

COMBINES:

- IH 227 CH, fits 315, 205 or 203
- IH 205 w/10 ft. Platform, \$3,000
- IH 844 Cornhead - \$2,500
- IH 810, 13 Ft. Head - \$2,500
- MF 1144 4-Row Wide CH, \$4,250
- MF 750 w/1163 Cornhead, 6 Row Narrow & 13' Platform - Coming In!
- 744 Wide Cornhead for 715, Ex. Cond.
- 743 N Cornhead for 815, Ex. Cond.
- MF 510 Diesel- Nice Shape
- JD 7720 Combine, 6 Row Cornhead, 15 Ft. Soybean Head, Nice Shape, Low Hours!

COMBINES & EQUIP. FOR PARTS:

- (2) IH 315's
- IH 403 Gear, 4R W Hd. & 12 Ft. Plat.
- IH 227 Cornhead
- IH 700 13' Platform
- IH 550 Chopper (Parts)
- 400 6R Cyclo- Parts or Field Use
- IH 455 & 856 Planters
- JD Van Brunt 13x7

TILLAGE:

- IH 37, 35 In Various Sizes
- IH 3 Pt. Hitch 2-Bot. Plow
- Int. 360 20 ft. Trailing Field Harrow
- IH 735 5 Bot. Vari-Width Plow, Auto Reset - Coming In
- IH 490 Disk Harrow, 24' 10 9" Spacing, Coming In
- IH 78 Front Mtd. 4-Row Cultivator w/Quick Attach, For IH 66 Series
- 1-Bot. Trailing Plow
- Case 12 Ft. Trailing Chisel Plow
- Glencoe 9 Shank Conser-Chisel
- Amco 24' Disk Harrow, 9" Spacing - Coming In

PLANTERS:

- (2) IH 56 4-Row Planters
- IH 658 6-Row Narrow Dry Fert.
- AC 600 6-Row Narrow Planter, No Till, Ex. Cond.
- IH 510 21x7 Comb. Grain Drill
- IH 510 16x7 Plain Drill w/Press Wheels
- New Yetter No-Till Coulters For Dry Fert. For JD 7000 Planter

MISCELLANEOUS:

- Ag Chem 500 Gal. Trailing Sprayer, Like New!
- Freeman Loader for IH 424
- Morrige 400 Bu. Grain Dryer - Set Up For Natural Gas, Can be converted to LP gas, \$1,600
- Martin 3300 Gal. Liquid Tanker w/injector
- IH Loader For 300 Utility
- John Blue 400 Gal. SS Pull-Type Sprayer
- John Blue 6-Row Side Dresser, 1 Yr. Old
- John Blue Model 700 500-Gal. Sprayer - New!!
- Badger 200 Bu. Roller Mill Without Motor- \$900
- National 5-Gang Power Driven Trailing Reel Mower

ERB & HENRY EQUIP., INC.

New Berlinville, PA
One Mile North of Boyertown
215-367-2169
FAX: 215-367-6715



Used 7010 AC w/cab, excellent
condition, approx. 350 hrs.
Call for Special Price!

NEW EQUIPMENT

- Deutz Allis 6260 2 WD w/Loader
- Deutz Allis 6275
- Deutz Allis 1500 Min. Till
- Model 380 HD Square Baler
- GP 2.50 Round Baler
- 500 Gal. (Cagle) Sprayer
- Knight 716 Spreader

USED EQUIPMENT

- Case 1490 Tractor w/1400 hrs.
- IH 656 Hydro
- JD 50
- JD 1290 Mower-Conditioner
- AC E-111 Combine w/240 Corn Head and 13 Ft. Grain Head Excellent Condition
- JD skid loader, model 125
- Cagle 750 gallon sprayer, with monitor
- 475 Arts-way Mill-Mixer w/scales

Artsway Silamix Feed Wagon
In Stock Now.
Call For Special Price

**COMPARE OUR PRICES
ON WOODS MOWERS**

B. EQUIP. INC.

8422 Wayne Highway
Waynesboro, Pa. 17268
717-762-3193



WALTEMYER'S SALES & SERVICE, INC.

John Deere Sales & Service
Route 24, 2 miles South of Red Lion
717-244-4168 or 717-246-3662

- JD 1945 A Tractor
- (2) JD 1209 mower conditioner
- 12 Ft. Bushhog Tandem Disk, wheel lift
- 2R Braco Potato Harvester w/PTO Drive
- Woods C80 pull type rotary mower
- JD 896 parallel bar rake
- JD 125 chuck wagon on 1065 running gear
- JD 4 RW Row Crop Cultivator
- Cub Tractor with belly mower front blade and plow
- AC 330 4 row wide no-till corn planter with dry fertilizer
- IH 56 RR wide planter with dry fertilizer
- Cub Tractor with sickle bar mower
- Brillion 10' Pull Type sure-stand seeder w/transport wheels
- Herd 3pt. 1200 lb. fertilizer spreader, like new
- 5 Bottom 16" Semi-Mounted Plow
- JD F345 4 Bottom 16" Semi Mounted Auto. Reset Plow With Accumulators
- JD 8250 Grain Drill w/grass seed box
- JD 2240 MFWD w/roll guard and canopy, 245 loader.
- JD 7000 6RN planter w/frame mounted coulters and dry fert. w/quick fill auger.
- JD 7000 6RN planter w/frame mounted coulters and liq. fert.
- JD 2350 MFWD w/roll guard and canopy, 490 hours