



Virginia Weekly
June 1, 1989

MARKETS IN REVIEW; MAY 25-31, 1989. FEEDER STEERS AND HEIFERS IN VIRGINIA WERE STEADY TO \$2.00 LOWER AS MIDWEST PRICES WERE 25-50 CENT LOWER.

SLAUGHTER STEERS AND HEIFERS IN VIRGINIA WERE STEADY TO 50 CENT LOWER AS MIDWEST PRICES WERE \$1.50-2.00-LOWER.

COWS AND BULLS IN VIRGINIA WERE STEADY TO \$3.50 HIGHER WHILE MIDWEST PRICES WERE \$2.00-3.00 LOWER. BEEF PRODUCTION WAS LESS THAN 1% BELOW A YEAR AGO BUT LESS THAN 1% ABOVE A YEAR AGO. AVERAGE DRESSED WEIGHTS WERE 7 POUNDS HEAVIER THAN LAST YEAR.

VEAL AND CALF PRICES IN VIRGINIA WERE MIXED, \$8.50 LOWER TO \$4.50 HIGHER AS MIDWEST PRICES REMAINED STEADY. VEAL AND CALF PRODUCTION WAS 3% ABOVE A WEEK AGO AND 1% ABOVE A

YEAR AGO. AVERAGE DRESSED WEIGHTS WERE 18 POUNDS HEAVIER THAN LAST YEAR.

LAMB PRICES IN VIRGINIA WERE \$1.25-4.00 LOWER AS MIDWEST PRICES WERE MOSTLY \$2.00 LOWER. LAMB PRODUCTION WAS 6% BELOW A WEEK AGO BUT LESS THAN 1% BELOW A YEAR AGO. AVERAGE DRESSED WEIGHTS WERE 1 POUND LIGHTER THAN LAST YEAR.

SLAUGHTER HOG PRICES IN VIRGINIA WERE 50 CENT TO \$1.00 LOWER AS MIDWEST PRICES WERE 25-50 CENT LOWER. FRESH PORK PRICES WERE MIXED, \$3.00 LOWER TO \$2.50 HIGHER. PORK PRODUCTION WAS LESS THAN 1% HIGHER THAN LAST WEEK BUT 5% ABOVE A YEAR AGO. AVERAGE DRESSED WEIGHTS WERE THE SAME AS LAST YEAR.

THE VIRGINIA DIRECT HOG MARKET MAY 25-31, 1989 RECEIPTS FOR THE DIRECT HOG MARKET IN VIRGINIA TOTALED 13,238 HEAD. COMPARED TO LAST WEEK 17,787 HEAD. THE MARKET CLOSED 50 CENT TO \$1.00 LOWER COMPARED TO LAST WEDNESDAY'S TRADING.

COUNTRY POINTS PLANTS US 1-3 200-240 LBS 43.00-44.50 --- US 1-2 210-240 LBS FEW HIGH YIELDING 43.50-45.50 US 2-4 210-240 LBS BASE

PRICE 41.50-43.50 SOWS \$28.00-29.00 AND BOARS \$19.00-27.25

SLAUGHTER STEERS AND HEIFERS 1%; SLAUGHTER COWS 20%; SLAUGHTER BULLS 2%; SLAUGHTER CALVES AND VEALERS 1%; FEEDER CATTLE UNDER 600 LBS 56% OVER 600 LBS 20%

PRICE RANGES FOR VIRGINIA WEEKLY AUCTIONS

SLAUGHTER CATTLE STEERS, CHOICE 2-3 1150-1300LBS 69.25-74.50 CHOICE 2-3 1300 LBS & OVER 73 00 HEIFERS; CHOICE 2-3 900-1000 LBS 68.00 CHOICE 2-3 1000-1150 LBS 68.25-69.00 CHOICE 2-3 1150-1200LBS 70.00 UTILITY & COMMERCIAL COWS 40.25-54.50 BULLS - 1-2 900-1300 LBS 50.00-64.00 1-2 1300-1600 LBS 53.75-64.00 1-2 1600 LBS & OVER 54.00-67.75 SLAUGHTER CALVES AND VEALERS VEALERS - HIGH CHOICE & PRIME 100-250 LBS 85.00-98.50 GOOD AND CHOICE 100-250 LBS 80.00-92.50 CALVES - GOOD AND CHOICE 250-500 LBS 73.00-84.00 SLAUGHTER LAMBS - HIGH CHOICE & PRIME 95-125 LBS SPRING 65.50-71.00 FEW 60.00 HIGH CHOICE & PRIME 95-125 LBS WOOL 55.00 SLAUGHTER HOGS US 2-4 200-250 LBS 40.70-44.00 SOWS US 1-3 300-500 LBS 27.50-36.00, 500 LBS & OVER 30.00-36.75

FEEDER CATTLE STEERS; MEDIUM 1 HEIFERS. MEDIUM 1 200-300 LBS 95.00-110.00 300-400 LBS 89.00-90.00 300-400 88.00-100.00 400-500 71.00-86.50 400-500 86.00-101.00 500-600 71.50-82.50 500-600 80.00-96.50 600-700 64.50-74.50 600-700 71.00-82.50 FW 89.50 700-800 57.00-65.00 700-800 65.00-74.50 800-900 56.00-68.50 800-900 63.25-73.00.

N. Virginia Area Livestock

Orange, VA
May 31, 1989

ALL TRENDS COMPARED TO LAST WEDNESDAY

SLAUGHTER CATTLE 53 HEAD - SLAUGHTER COWS 2 00 LOWER. SLAUGHTER BULLS 5.00 LOWER. SLAUGHTER STEERS AND HEIFERS 5 HEAD

STEERS; SELECT 2-3 900-1100 LBS 59.50

SLAUGHTER COWS 27 HEAD CUTTER & BNG. UT. 1-3 46 50-48 00 BRKG.UT. & COMM. 2-4 44 50-54 50 CANNER & LOW CUTTER 1-2 ---

SLAUGHTER BULLS 5 HEAD, 1-2 900-1300 LBS 50 00-59.00 1-2 1300-1600 LBS 63.50 1-2 1600 LBS & OVER 63 50

SLAUGHTER CALVES AND VEALERS 16 HEAD VEALERS - HIGH CHOICE AND PRIME 100-250 LBS 90.00-98.50 GOOD AND CHOICE 100-250 LBS 86.00-92.50 CALVES - GOOD AND CHOICE 250-500 LBS 80.00-84.00

FEEDER CATTLE 164 HEAD - FEEDER STEERS AND FEEDER HEIFERS STEADY. FEEDER BULLS 3.00-4.00 LOWER. STEERS; MEDIUM 1 MED.&LARGE 1 300-400 94 50 --- 400-500 91.00-94.50 80.00-84.00 500-600 85.50 72.00-79.00 600-700 --- 68.00-71 00

HEIFERS; MEDIUM 1 MED.&LARGE 2 300-400 80.00-84 00 74.50-80.00 400-500 76.00-81.00 70.00-77.50 500-600 72.00-76 00 61 50 600-700 71.00-72.50 --- 700-800 60.50-65.00 --- FEEDER BULLS; MED. 1

MED.&LARGE 2 300-500 LBS 75.00-89.00 77.50 500-700 LBS 70.00-75.00 --- 700-900 LBS 62.50 68.00-71.00 COWS WITH CALVES AT

SIDE 2 PAIR, M-1, 6-8 YR OLD 950 LBS WITH CALVES 80 LBS 540.00-600.00, S-1, 10-12 YR OLD 750-850 LBS WITH CALVES 80 LBS 540.00 PER PAIR. BABY CALVES RETURNED TO FARMS 14 HEAD NEWBORN TO 4 WK OLD 52.50-95.00 PER HEAD. OVER 100 LBS 117 50-150 00 PER CWT

S.W. Virginia Area Livestock

Wytheville, VA
May 30, 1989

ALL TRENDS COMPARED TO LAST TUESDAY.

SLAUGHTER HOGS 19 HEAD - NO TRENDS REPORTED. BARROWS AND GILTS US 2-4 200-250 LBS 40.85 SOWS US 1-3 300-500 LBS 31.00-32.50 BOARS 23.50

SLAUGHTER CATTLE 93 HEAD - NO TRENDS REPORTED.

SLAUGHTER COWS 88 HEAD TER & BNG.UT. 1-3 43.00-50.25 F 52.00-54.00 BRKG.UT. & COMM. 2-4 42.00-48.00 CANNER & LOW CUTTER 1-2 40.50-46.25

SLAUGHTER BULLS 5 HEAD; 1-2 1600 LBS & OVER 54.00-63.50

LAMBS 352 HEAD - NO TRENDS REPORTED. HIGH CHOICE AND PRIME 95-125 LBS SPRING 65.50 FEEDER LAMBS CHOICE AND FANCY 70-85 LBS 60 00 SLAUGHTER EWES ALL GRADES 12.00-17.50

FEEDER CATTLE 86 HEAD - NO TRENDS REPORTED STEERS; MEDIUM 1 LARGE 1 MED & LARGE 2 400-500 --- 98 00 700-800 --- 72 50 --- 800-900 69.75 --- --- HOLSTEIN STEERS, MED & LARGE 1-2 300-500 LBS 76 00-78 00

HEIFERS - TOO FEW TO QUOTE ANY PRICES

BABY CALVES RETURNED TO FARMS 48 HEAD NEWBORN TO 4 WK OLD 70 50-192.50 PER HEAD.

North Jersey Livestock

Hackettstown, NJ
Tues., May 30, 1989

Report supplied by auction

CALVES .48-.208.
COWS .42-.58% .
EASY COWS .05-.48% .
HEIFERS .45% -.62% .
BULLS .48% -.65 .
STEERS .60-.72 .
BOARS .29% .
ROASTING PIGS, EACH 26 00-34.00.
SHEEP .05-.58.
LAMBS EACH 23.00-56 00.
LAMBS PER LB. .39- 99
GOATS EACH 7 00-100.00.
KIDS EACH 17.00-49.00.
TOTAL: 1,038.

FEED INGREDIENTS

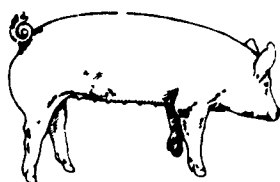
We Want To Help You Reduce Your Feed Costs

- WE SUPPLY**
- 48% SOYBEAN MEAL
 - ROASTED SOYBEANS
 - DRIED CORN DISTILLERS
 - MIXES

Call Us Today...

HERSHEY AG

(717) 653-8783 R.D. #1, Box 139
1-800-544-4574 Marietta, PA 17547



EMERY'S BUYING STATION

OPEN TO RECEIVE YOUR MARKET HOGS

AT THE GREEN DRAGON MARKET RD 4, EPHRATA, PA 17522 1 MILE NORTH OF EPHRATA ON NORTH STATE STREET.

HOURS: MONDAY, TUESDAY, and WEDNESDAY 7:00 A.M. to 11:30 A.M.

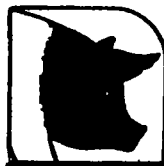
215-458-5677 Residence
717-733-9648 Office

YOU ARE PAID FOR YOUR HOGS IMMEDIATELY

Ken & Lois Emery, Proprietors

DON'T LET THE HEAT GET YOU DOWN!

We all know what the summers heat can do to farrowing houses next fall and early winter. Don't wait until it is too late - get the young aggressive boars NOW to maintain high conception rates and litter size. Call soon for your breeding stock needs.



Call Collect For More Information

OUTLAW SEEDSTOCK SERVICES

Ben Outlaw Route 2, Box 324A • Seven Springs, NC 28578 • 919-569-7521

SWINE PRODUCTION SALES AND SERVICE

Feeding Programs And Services To Meet Your Individual Needs

Computerized Record Keeping System

Contracts Available



Supplying Farm Fresh Feeder Pigs

Marketing and Hedging Services

Marketing of Genesis Breeding Stock

Developing Individual Financial Programs

Quality Products And Services - Working For YOU

419 West High Street Elizabethtown, PA 17022
Shippensburg (717) 532-7845
PA Toll Free 1-800-468-5524

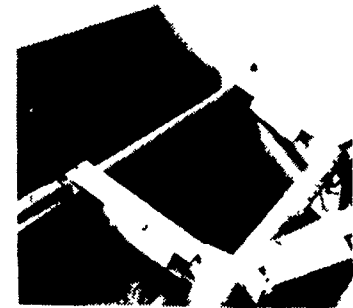
A new concept in TMR Mixers

2000 Series

Reel Auggie



The Mixer/Blender/Feeder that handles your TMR ingredients including long stem hay. Pictured is the RA 2250.



Reel Auggie Mixing Chamber

The reel turns slowly and gently lifts material into the two blending augers. The lower auger is notched and moves the material forward. The upper auger, which moves the material rearward, features replaceable knives which assist the blending of long baled hay or other tough roughage materials.

Advantages of the Reel Auggie Design

- * No more mixing by force and pressure
- * Blending long hay, other roughages, and by-product materials.
- * Reduced mixing time with lower horsepower requirements.
- * Reduced material breakdown, fluffier material consistency and faster, more even unloading.
- * Power chute optional in tow and truck mount applications.

Stationary - Tow - Truck

DISTRIBUTED BY:

TODD FARM EQUIPMENT, INC.
Rt. 9 East Oak Ridge Drive Hagerstown, MD 21740
(301) 791-0422

You can depend on a Knight

Since 1945

