

# PAUL B. ZIMMERMAN INC.

## EQUIPMENT Built To Last

### HEADLOCKS



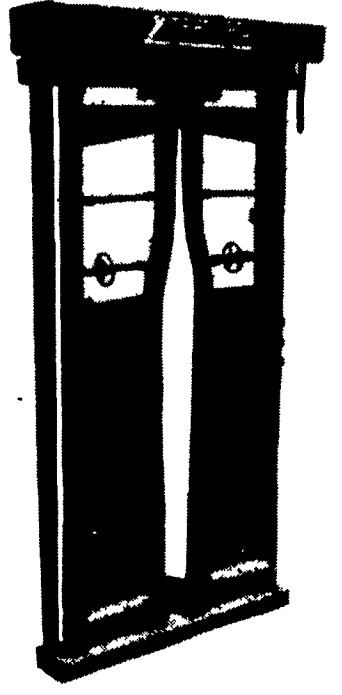
**THREE SIZES AVAILABLE TO MEET ALL YOUR CATTLE HANDLING NEEDS**

#### EXTRA HEAVY CONSTRUCTION FEATURES:

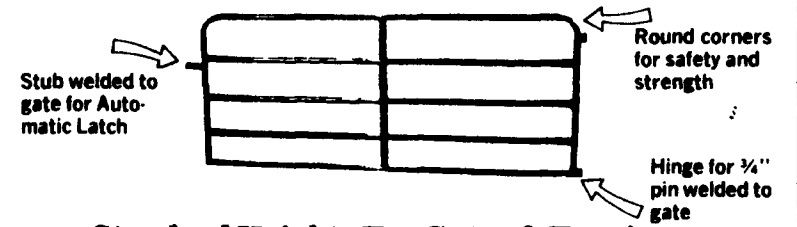
- 1.9" O.D. High Yield Tube Top & Bottom Frame
- 1" structural pipe on verticals & locks
- All yokes lock on individual catches, no strain on control rod.
- Yoke stabilizer on large sizes
- Unique design allows more head room

### AUTOMATIC HEADGATE

- Double Linkage For Extra Stability
- Fast, Easy Adjustment On Both Sides So Animal Size Can Be Adjusted Under Pressure
- No Wrenches Needed To Adjust Back Set Open
- Full Sheet Protection On Front



### GATES and FENCING

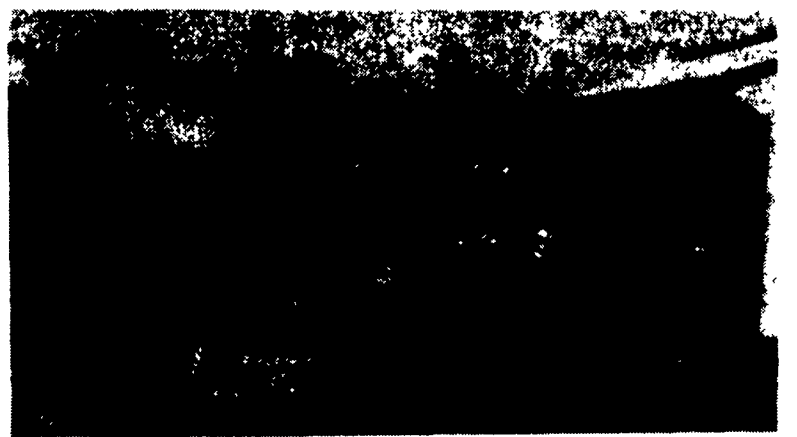


**Standard Heights For Gates & Fencing:**  
 • 38" High - 4 Bar • 48" High - 5 Bar • 54" High - 6 Bar

### EPOXY POWER COATED LOOP STALLS

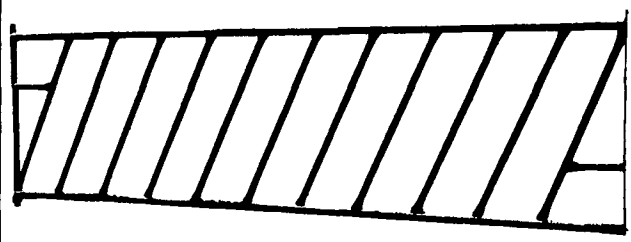


Stall Tubing 2 3/8" Outside Diameter,  
 12 Gal.(.109) Wall Thickness, High Yield Steel



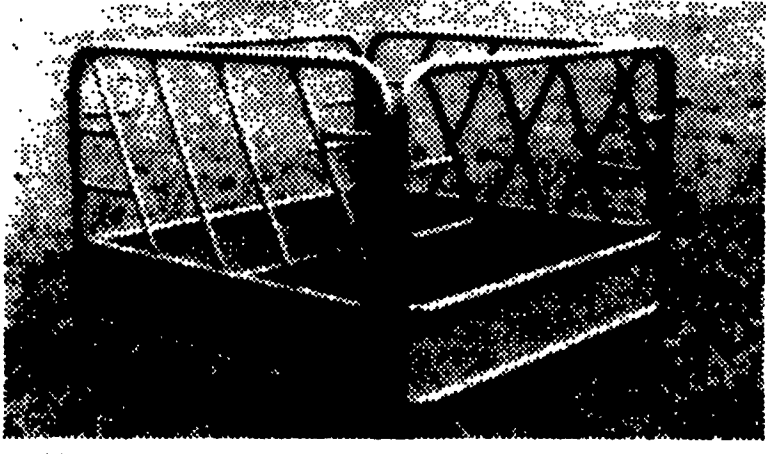
**All Gates & Fencing Made Of 1.9" Outside Diameter High Yield Steel Tubing With 13 Ga. Wall**

### SLANT BAR FEED THRU FENCE



*Custom Built To Any Length*

### HEAVY DUTY HAY BALE FEEDER



- Feed Big Round & Reg. Bales Or Stacks
- 1'9" O.D. Tubing & 1" Sch. 40 Pipe, All Welded Construction

### BLOCKING CHUTE

