

Greencastle Livestock

Greencastle, Pa.

Monday, May 29, 1989

SLAUGHTER CATTLE RECEIPTS: 69 HD. SLAUGHTER STEERS: TREND: 1.00 LOWER. CHOICE 2-3 950-1075 LBS. 70.00-74.00; CHOICE 2-3 1075-1375 LBS. 71.50-76.00; CHOICE 2-3 OVER 1375 LBS. 71.00-74.25;

CHOICE #4 ALL WEIGHTS 66.00-69.75; SELECT AND CHOICE 1-2, 950-1100 LBS. 69.00-71.50; 1100-1375 LBS. 68.00-72.75; OVER 1375 LBS. 66.00-69.50.

HOLSTEINS CHOICE 2-3 1050-1450 LBS. 61.00-66.00; SELECT 1-2 1050-1450 LBS. 56.50-61.00.

SLAUGHTER HEIFERS 64 HEAD. TREND: 1.00 LOWER. CHOICE 2-3 850-1000 LBS. 64.00-70.00; 1000-1250 LBS. 68.00-73.00; CHOICE #4, ALL

WEIGHTS, 62.00-66.50; SELECT AND CHOICE 1 AND 2 850-1000 LBS. 65.00-69.50; 1000-1250 LBS. 66.50-71.50. HOLSTEINS CHOICE 2-3 1000-1350 LBS. 56.00-62.25; SELECT AND CHOICE 1-2, 1000-1350 LBS. 55.00-57.50.

SLAUGHTER BULLS: 14 HEAD. TREND: STEADY. YG1, ALL WEIGHTS, 59.00-64.00; YG2, ALL WEIGHTS, 55.50-59.50.

BULLOCKS: 4 HEAD. CHOICE 1-3

1150-1375 LBS. 61.50-66.00.

COWS: 133 HEAD. TREND: 1.00-2.00 HIGHER. BREAKING UTILITY AND COMMERCIAL 49.00-55.00; CUTTER AND BONING UTILITY 47.00-54.00; CANNER AND LOW CUTTER 47.00 & DOWN.

STOCKER AND FEEDER CATTLE RECEIPTS: 52 HEAD. BEEF TYPE STEERS: 400-600 LBS. 78.00-86.00, HEIFERS 65.00-74.00; 600-800 LBS. STEERS 69.00-77.00; BULLS 59.00-66.00, HEIFERS 64.00-69.00; 800-975 LBS. STEERS 63.00-67.00.

HOLSTEIN AND DAIRY CROSS STEERS 200-400 LBS. 70.00-84.00; 400-600 LBS. 63.00-69.00; 600-800 LBS. 59.00-63.50; 800-975 LBS. 56.00-60.00; BULLS 800-975 LBS. 52.50-57.50.

CALVES: 336 HEAD. TREND: STEADY. CHOICE, 150-300 LBS.

92.00-108.00; GOOD, 150-300 LBS. 82.00-90.00; GOOD, 100-150 LBS. 82.00-90.00; GOOD, 80-100 LBS. 89.00-102.00; STANDARD, 80-100 LBS. 85.00-92.00; STANDARD, 80 LBS. AND DOWN 85.00 AND DOWN.

CALVES RETURNING TO FARM. TREND: 5.00 LOWER. HOLSTEIN BULLS OVER 100 LBS. UP TO 187.00; UNDER 100 LBS. UP TO 167.50; HOLSTEIN HEIFERS, OVER 100 LBS. UP TO 132.00; UNDER 100 LBS. UP TO 110.00; BEEF TYPE BULLS, OVER 90 LBS. UP TO 140.00; BEEF TYPE HEIFERS, OVER 90 LBS. UP TO 120.00.

SHEEP AND LAMBS: 51 HEAD. TREND: 5.00 LOWER. CHOICE, 80-100 LBS. 60.00-63.00; 100-120 LBS. 58.00-61.50; 120 & OVER 54.00-57.00; MEDIUM AND GOOD, ALL WEIGHTS, 52.00-57.00.

SHEEP: EWES, LEAN, 21.00-27.00; EWES, FAT, 15.00-19.00; BUCKS 17.00-20.00.

GOATS: 12 HEAD. SMALL 14.00-19.00; MEDIUM 20.00-37.00; LARGE 38.00-60.00.

HOGS, SOWS AND BOARS: 94 HEAD. TREND STEADY. 210-250 LBS. 43.00-45.75; 250-260 LBS. 44.00-45.00; 260-270 LBS. 41.00-42.50.

LIGHT HOGS: 140-180 LBS. 35.00-39.00; 180-210 LBS. 39.00-41.00.

SOWS: TREND: 1.00 HIGHER. GOOD, UNDER 400 LBS. 32.50-37.00; OVER 400 LBS. 33.00-38.00; CULL SOWS, ALL WEIGHTS, 26.50-31.50.

BOARS, TREND: STEADY. 180-210

LBS. 28.00-31.00; 210-260 LBS. 29.00-31.00; 260-300 LBS. 27.00-29.00; 300 LBS. AND OVER 28.00-29.25.

FEEDER PIGS: BY THE HEAD, 30-40 LBS. 19.00-24.00.

SALE EVERY MON., 2 P.M. AND EVERY THURS., 1 P.M. HAY AND STRAW EVERY MON. AND THURS., 11:30 A.M. SPECIAL FEEDER CATTLE SALE FRI., JUNE 2, 7:15 P.M. SPECIAL FEEDER PIG SALE SAT., JUNE 24, 1 P.M.

Grantsville Livestock

Grantsville, Maryland

Sat., May 27, 1989

HOGS: TOP BARROWS & GILTS 45.00-46.50; HEAVY BUTCHER 40.00-45.00; LIGHT BUTCHER 30.00-44.50; BUTCHER SOWS 30.00-36.50; FEEDER SHOATS 8.00-35.00.

VEAL: GOOD 95.00-115.00; STANDARD 80.00-90.00; UTILITY 60.00-75.00; BULL CALVES 120.00-185.00.

SHEEP & LAMBS: GOOD 62.00-70.00; UTILITY 50.00-60.00; SLAUGHTER EWES 18.00-25.00.

SLAUGHTER CATTLE: STEERS GOOD 68.00-69.50; STANDARD 60.00-64.00; UTILITY 55.00-58.00. HEIFERS GOOD 64.00-68.50; STANDARD 58.00-62.00; UTILITY 48.50-52.00.

COWS: COMMERCIAL 48.00-54.00; UTILITY 45.00-46.00; CANNER & CUTTER 38.00-42.50.

BULLS: COMMERCIAL & GOOD 58.00-62.00; CUTTER & UTILITY 50.00-55.00.

STOCK-FEEDER CATTLE: GOOD 70.00-78.00; MEDIUM 60.00-65.00.

STEER CALVES: GOOD 75.00-92.00; MEDIUM 62.00-70.00.

HEIFER CALVES: GOOD 70.00-82.50; MEDIUM 55.00-65.00. EGGS: LARGE .52-.58; MEDIUM .45-.50.

Peoria Sheep

Peoria, IL

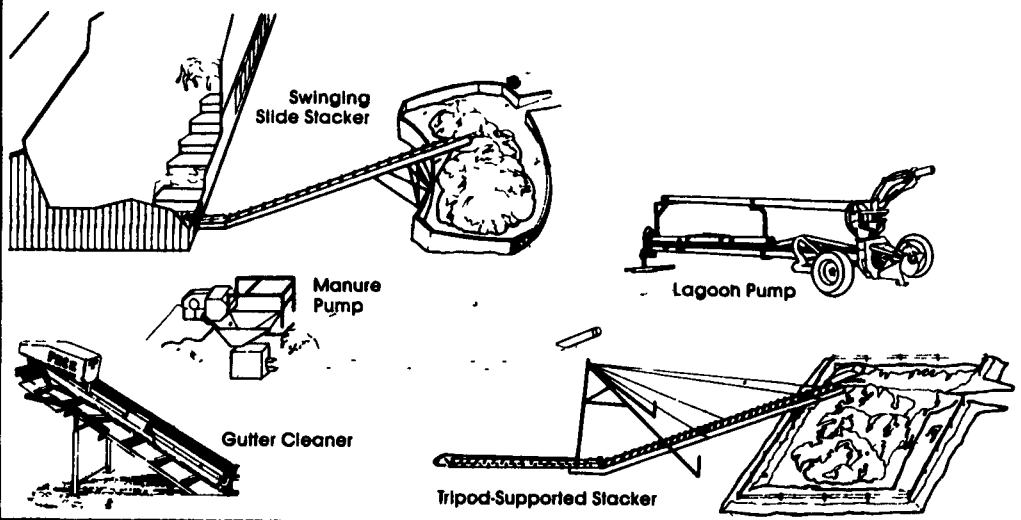
May 30, 1989

SHEEP: 150 TRADING MODERATE SLAUGHTER LAMBS 3.00 LOWER. SLAUGHTER LAMBS: CHOICE AND PRIME 95-120 LBS. 67.00-70.00

**— ANNOUNCEMENT —
WE ARE NOW YOUR DEALER FOR PATZ
MANURE & SILAGE HANDLING EQUIPMENT**

Patz

Manure-Handling Systems You Can Depend On



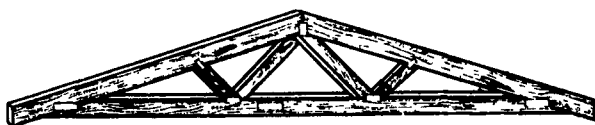
WITMER IMPLEMENT SERVICE

1896 Bedford Rd., Shippensburg, PA 17257

PHONE: (717) 532-6139 Emergency Service

Ask For Rick or Lynn

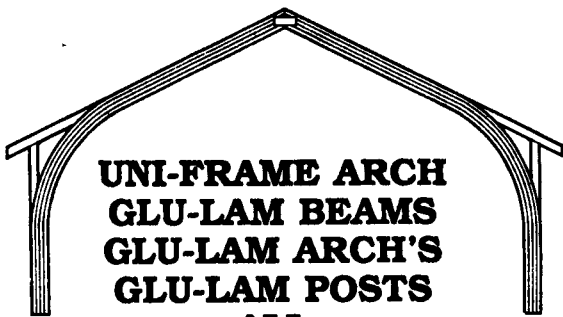
**PRODUCTS
WE MANUFACTURE
AND STOCK**



All Types Engineered
Roof Trusses
* Crane Service



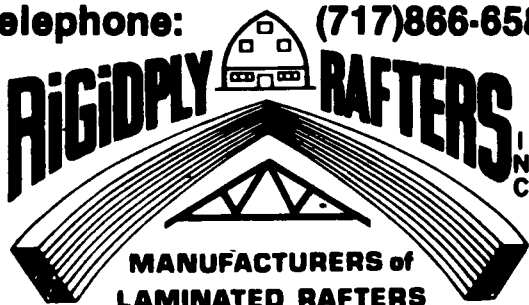
GAMBREL ROOF



UNI-FRAME ARCH
GLU-LAM BEAMS
GLU-LAM ARCH'S
GLU-LAM POSTS
ALL

UNIQUE PRODUCTS
SPECIAL DESIGNS
IN CURVES, WIDTHS,
HEIGHTS & LENGTHS
ENGINEERED DESIGNED
& TESTED PRODUCTS

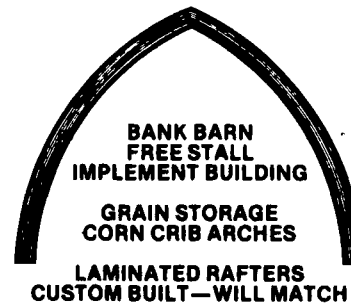
Telephone: (717)866-6581



MANUFACTURERS of
LAMINATED RAFTERS
and WOOD ROOF TRUSSES

701 E. Linden St., RICHLAND, PA 17087

Radio Dispatch For Better Delivery
Communication



BANK BARN
FREE STALL
IMPLEMENT BUILDING

GRAIN STORAGE
CORN CRIB ARCHES

LAMINATED RAFTERS
CUSTOM BUILT—WILL MATCH

QUALITY PRODUCTS
& SERVICE FOR MORE
THAN 30 YEARS

FABRAL Roofing & Siding PANELS

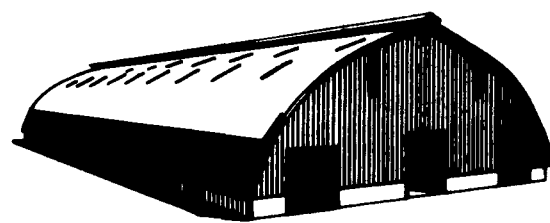
**THE
GLU-LAM POST**

**The Only REAL
Laminated Post**

Use Glu-Lam Posts & Realize The Advantages!



ROLLS EASIER AND
LASTS LONGER



We Specialize in
Farm Building Rafters



WINDOWS, DOORS
AND HORSE
STALL PRODUCTS

T/G FLOORING &
DECKING