

OPEN HOUSE

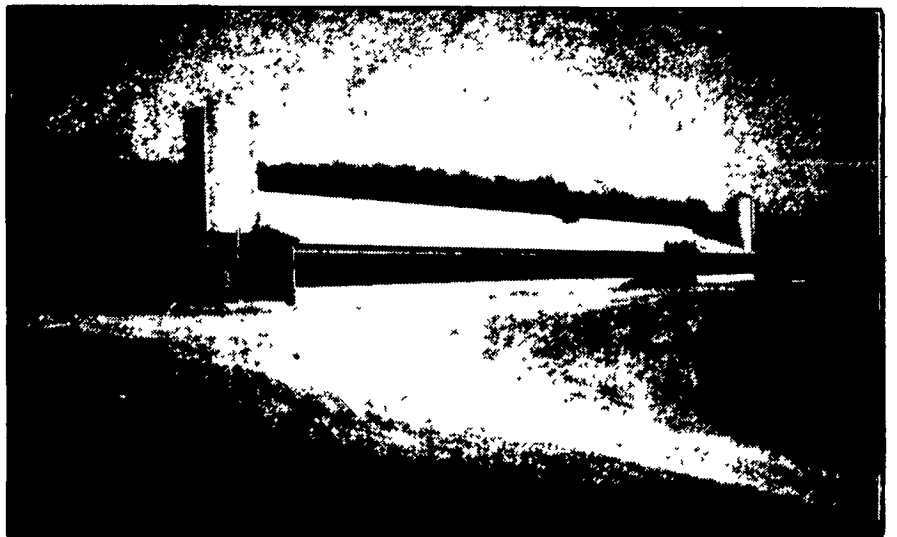
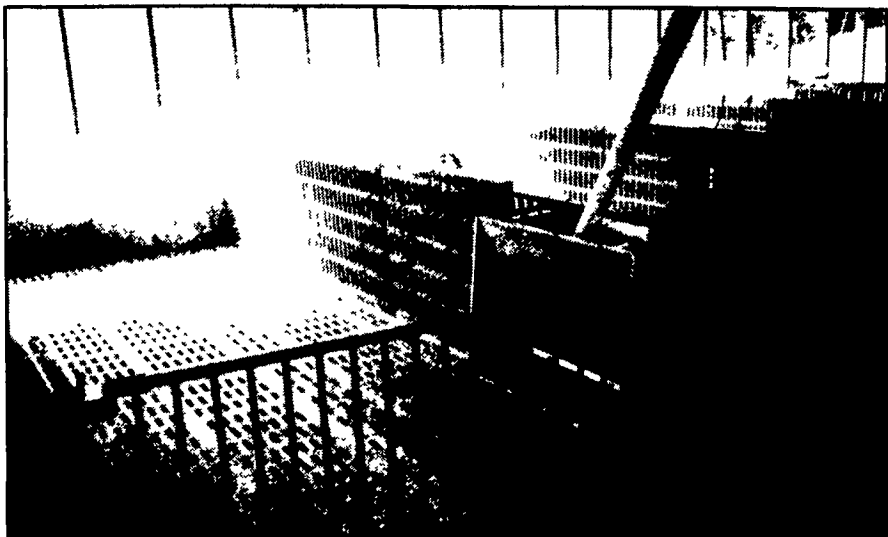
At The

PAUL HINKLE FARM

Millerstown, PA

THURSDAY, JUNE 1, 1989 From 10 A.M. to 3 P.M.

Everyone Is Invited To See This Totally New Concrete Slatted 1200 Head 2 Stage Grower-Finisher Barn. Dr. Dan Myers From Penn State Ag Engineering Department Will Be Available To Answer Questions On Building Design.



Farmers - You Now Have Another Choice. See These New Products For This Area. Products That Provide Low Maintenance And Longer Life.

SPECIAL FEATURES:

- Super Ridge Ventilation For Natural Air Flow
- Waffle Concrete Slats For Longer Life And Better Animal Comfort
- Poured Concrete Walls For Manure Storage
- Syri-Con Precast Concrete Penning
- Modern Ag Stainless Steel Feeders

WE SPECIALIZE IN MANURE STORAGE STRUCTURES

We are qualified to handle any poured concrete job you may need. We use a practical aluminum forming system to create concrete structures of maximum strength and durability. For a highly satisfactory job at an affordable price, get in touch with us.

POURED FOR DURABILITY

Groffdale
concrete walls, inc.

BRICK CHURCH RD. LEOLA, PA 17540
FOR SALES & LAYOUT CONTACT
GROFFDALE CONCRETE WALLS (717) 656-2016
JAKE KING (717) 656-7566

EMHERR DESIGNERS OF FINE QUALITY HOG EQUIPMENT AND BUILDINGS

Featuring:

- GSI Feed Bins & PVC Flex Auger Systems
- Edstrom Nipple Waterers And Spray Cool Systems
- Modern Ag Stainless Steel Feeders
- Roc-Lon Insulated Curtains

Serving The Farming Community For Over 30 Years

EMHERR EQUIPMENT, INC.

14 Herrville Rd., Willow Street, PA 17584

Phone 717-464-3321 or Toll Free: 800-732-0053

- Contracted By -

WENGER FEED MILL INC.

Rheems, PA

1-800-692-6008

Call One Of Our Agribusiness Lenders

Palmyra Kennett Square
Andrew C. Terrell Gary Kline
(717) 271-6102 Clay Thomson
215-311-6960
Lancaster Reading
Bob Zook William Higbe
(717) 295-8337 Blaine Foster
Doug Darling
215-320-FARM

Meridian Bank
Professionals with the personal touch

SYRI-CON PRECAST CONCRETE CORP.

Hog - Cattle Slats/Concrete Penning/H-J Bunks

477 E. Farmersville Rd.
New Holland, PA 17557

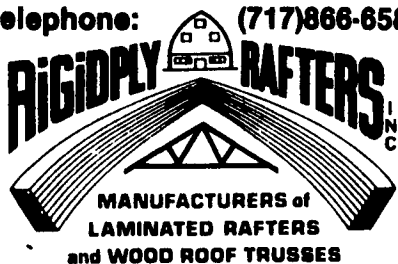
717-355-2361

- Carpentry Work By -

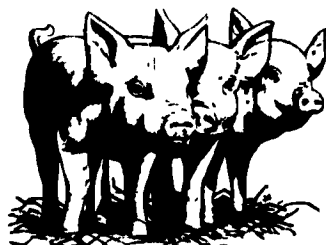
MARTIN GENERAL BUILDERS

R.D. 2, Box 614
Liverpool, PA 17045

Telephone: (717)866-6581



701 E. Linden St., RICHLAND, PA 17067



Directions To Site:

From 322 East:
Take Millerstown
Exit To Stop Sign.
Turn R-Go 1/4 Mi.
To Sewer Plant.
Turn Left, Go 7
Miles To Reward.
Then 1/2 Mile
Turn Left To
Farm.

