

Crawford Co. DHIA

dhia Monthly Report

Pennsylvania Dairy Herd Improvement Association

BREED CODES

- 1—Ayrshire 4—Jersey 7—Red Dane
2—Guernsey 5—Brown Swiss 8—Mixed
3—Holstein 6—M. Shorthorn 9—Red and White

March, 1989 Rolling Herd Averages

Name	Brd.	No. Cows	Lbs. Milk	Lbs. Fat
John Tautin Sr	R&GH	41.7	21,593	834
Black Pond Farms	RH	88.6	21,584	810
Stain-Brook Farms	R&GH	49.4	22,540	807
Dale Home Farms	RH	37.6	20,978	784
Richard L. Black	RH	52.4	20,974	778
Vel-Rus Holsteins	RH	77.0	21,676	776
Wil-Aire Farm	RH	53.3	20,585	771
Helen Anthony	R&GH	41.8	20,169	768
Doug Stanhope	R&GH	46.0	20,222	762
Bryan R. McCurdy	RH	32.5	20,396	759
Alan & Rhona Custead	R&GH	85.9	20,296	753
Morrell Farms	RH	98.1	20,566	748
Greene Acres	RH	68.1	20,857	744
Jeffrey Raney	R&GH	45.3	19,964	743
David M. Naugle	RH	19.7	20,833	742
James K. Anderson	R&GH	48.9	18,856	738
Tom & Libby Wilson	R&GH	21.0	19,574	737
O-Darlan Farm	R&GH	44.9	19,795	734
Jacob H. Leffler	R&GH	66.4	20,820	732
George P. Simcheck	R&GH	49.4	18,602	725
Orange Bucket	RH	43.4	19,780	717

Raymond A. Holabaugh	R&GH	61.2	19,547	713
Fosters Family Farm	R&GH	42.1	19,407	705
Byler Bros Farm	R GGH	107.5	17,994	699
Robert & Linda Field & Sons	R&GH	40.5	19,088	699
Dewey Styer	R&GH	47.4	19,708	696
Earl & Bonita Krider	R&GH	45.6	19,587	694
Jack Rynd	RH	126.9	18,248	692
Robert Marzka	R&GH	28.3	17,944	690
Spruce Row Farms	RJ	63.6	15,256	679
Darrel L. Schweitzer	RH	38.6	18,468	678
Joe Arbuckle	R&GMX	31.4	17,659	678
Elaine A. Duncan	R&GH	36.6	21,017	674
Seldomrest "F" Farm	R&GMX	40.1	17,337	673
Dennis B. Halfast	RH	47.8	18,994	670
W. Norman Wheeler	R&GH	47.2	18,585	666
Honey Run Farms	R&GH	151.9	17,471	665
Ronald Kalinowski	R&GH	43.7	19,156	660
Stanley Bradshaw	R&GH	50.0	18,623	657
Boozer Farm	R&GH	48.9	17,697	656
Cromdell Farms	RH	42.0	17,327	656
Roses Dan-Dee Farms	RH	150.5	18,762	655
Mark Cornell	R&GH	38.5	19,124	653
Bly Valley Farms	R&GH	33.1	19,401	652
Dean Horne	GH	16.4	18,620	652
A&B Dairy Farm	R&GH	65.3	18,323	652
Queens Manor Holsteins	RH	27.5	17,104	652

Lactations

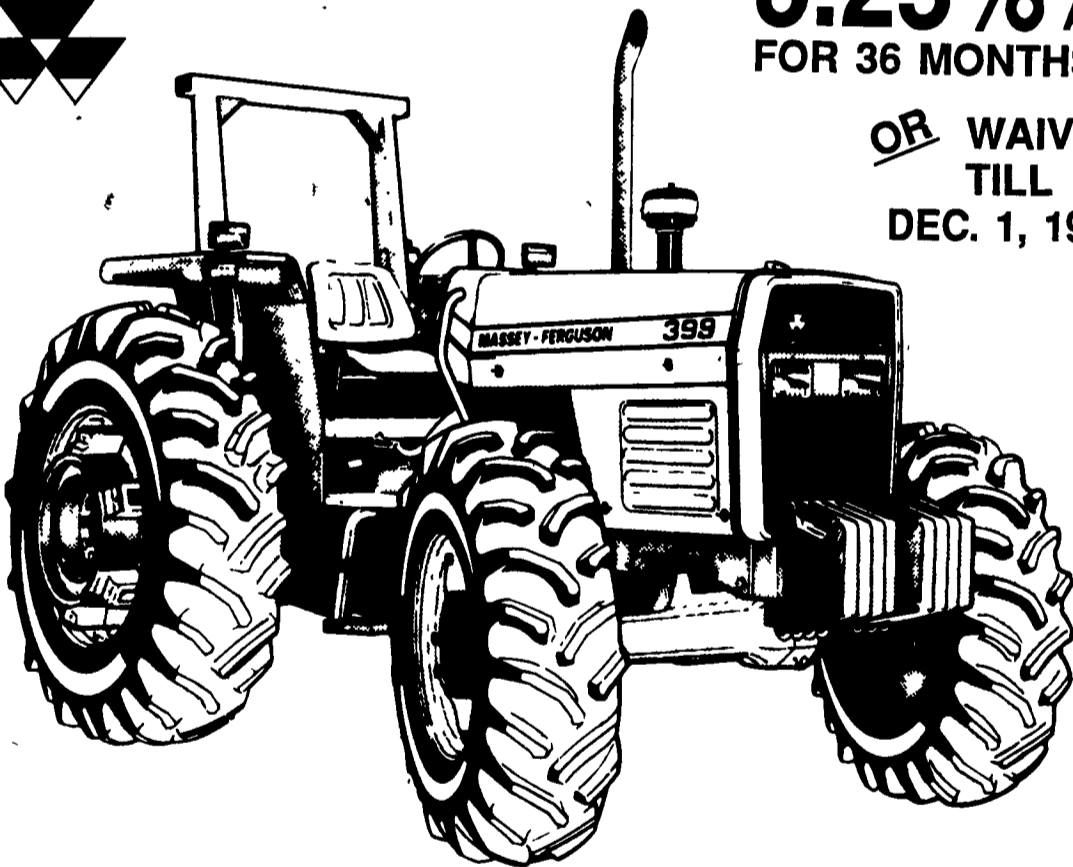
Jack Rynd	RH	6-3	21,013	4.1	869
Lindsey	RH	3-6	27,146	3.1	861
Kaylen	RH	3-6	27,146	3.1	861
A-Jay Farms	RH	8-1	21,354	4.0	862
Spock	RH	8-1	21,354	4.0	862
Vel-Rus Holsteins	RH	3-7	24,658	3.6	907
Rosmary	RH	2-4	24,838	3.6	914
Susan	RH	4-4	28,053	3.3	930
Bobby	RH	4-4	28,053	3.3	930
Morrell Farms	RH	8-7	27,766	3.5	978
Fawn	RH	6-7	23,167	4.4	1038
Cherry	RH	6-7	23,167	4.4	1038
Orange Bucket	RH	4-6	27,010	3.2	882
79	RH	4-6	27,010	3.2	882

Lancaster Farming Saturday, May 27, 1989-D17

O-Darlan Farm	RH	5-8	28,013	3.2	904
65	RH	5-8	28,013	3.2	904
Jacob H. Leffler	RH	7-1	25,864	3.4	895
Rachel	GH	6-9	25,387	3.3	860
Betsy	RH	6-5	24,616	3.8	953
202	RH	5-4	27,169	3.1	864
264	GH	3-7	24,819	3.5	883
63	GH	3-7	24,819	3.5	883
George P. Simcheck	GH	6-6	20,623	4.1	852
Veronic	GH	6-6	20,623	4.1	852
Alan & Rhona Custead	GH	3-10	22,572	4.0	906
Petunia	RH	4-0	23,992	3.7	906
Darcy	RH	4-0	23,992	3.7	906
Helen Anthony	RH	4-3	27,194	3.4	943
Coby198	RH	3-11	20,338	4.4	909
Heidi90	RH	3-11	20,338	4.4	909
Stain-Brook Farms	GH	4-8	28,668	3.2	919
Snoball	GH	4-8	28,668	3.2	919
Greene Acres	RH	7-3	23,954	3.6	875
Cala326	RH	4-2	28,565	3.5	1019
Cher149	RH	4-0	29,580	3.1	918
Besie51	RH	4-0	29,580	3.1	918
Doug Stanhope	GH	3-11	22,336	3.8	860
246	GH	3-11	22,336	3.8	860
David M. Naugle	RH	8-4	28,864	3.1	896
120	RH	8-4	28,864	3.1	896
Raymond A. Holabaugh	GH	7-2	26,598	3.2	850
"Windy"	GH	7-2	26,598	3.2	850
James K. Anderson	RH	3-1	20,709	4.2	871
Honey91	RH	3-1	20,709	4.2	871



MASSEY-FERGUSON 399



8.25% APR
FOR 36 MONTHS

OR WAIVER
TILL
DEC. 1, 1989

- Top-of-the-range model, available in both 2 and 4-wheel drive
- Smooth, large capacity 85 PTO hp, 6-cylinder Perkins engine producing 85 PTO hp
- A near perfect weight distribution and power-to-weight ratio enables the M-F 399 to handle the largest implements
- Standard hydrostatic steering gives easy, precise control

- Standard 12-speed synchromesh transmission meets all application needs
- Comprehensive instrumentation provides early warning of malfunction, to minimize down-time
- 50° steering on 4WD, for unrivalled maneuverability
- Attractive sheet metal design offers improved service access

THE ONE TO SEE

N.H. FLICKER & SONS, INC.
Maxatawny, PA
Ph: (215) 683-7252

S.G. LEWIS AND SON
West Grove, PA
Ph: (215) 869-9440
869-2214

R.W. KELLER SALES
Perkasie, PA 18944
Ph: (215) 257-0101

TRIPLE H EQUIPMENT
Peach Bottom, PA 17663
Ph: (717) 548-3775

M.M. WEAVER & SON
N. Groffdale Rd.
Leola, PA 17540
Ph: (717) 656-2321

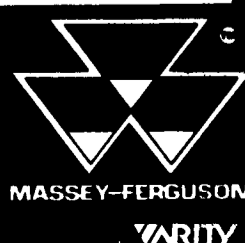
LEBANON VALLEY IMPLEMENT CO.
700 E. Linden St.
Richland, PA
Ph: (717) 868-7518

ARNETT'S GARAGE
Rt. 9 Box 125
Hagerstown, MD
Ph: (301) 733-0515

CTF SALES & SERVICE, INC.
Comly's Turf Farm, Inc.
Forest Grove Rd.
Wycombe, PA 18980
Ph: (215) 698-7157

SCHREFFLER EQUIPMENT
Pittman, PA
Ph: (717) 648-1120

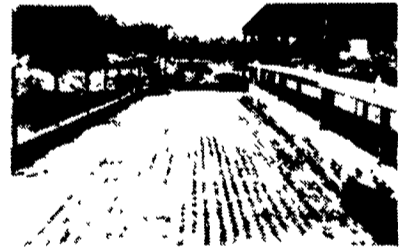
PEOPLE'S SALES & SERVICE
Oakland Mills, PA
Ph: (717) 436-2735
463-2735



SLICK CONCRETE CAN BE ROUGHENED

SCABBLING is an effective way to avoid unnecessary losses of cattle. The SCABBLER makes bands about two inches wide approximately 1/8" to 3/16 in. depth. This gives sufficient area for good footing while allowing you to scrape the smooth surface as before. It is near enough to the surface to give your cows full advantage of the roughness and deep enough to remain effective for years. It greatly aids in heat detection.

And the good news is that it is reasonably priced. You have the choice of doing it yourself or having us do it for you. We offer service right to your door. Call us for more details.



SUBURBAN RENTALS, INC.

Call 800-692-0123

We go almost anywhere

1989 BARN PAINTING Latest Developments

- PREPARATION** - High volume water blasting at 1,000 lb. pressure re-surfaces barn siding into a smooth (like new) appearance!
 - Performed by professionals quickly at reasonable cost
 - By yourself with your own or rented equipment.
 - Or other more conventional methods
- APPLICATION** - To insure better adherence to this super prepared surface, use the best fine bristle brush in four directions to evenly distribute the recommended rail thickness of seal coat coverage.
- SPECIALIZATION** - Every barn is different but generally it's best to use a high quality mildew resistant product, specially formulated to meet the requirements of this partially weathered wood that was and will be weather stressed.
- WARNING** - The modified oil latex is less effective as a wood preserver and actually increases nail & metal deterioration. Deal with home people. At their rates, I could double mine.

**Aerial & Latest Equip.
Estimates Evaluations**

PHARES S. HURST
RD 1 - Box 503
Narvon, PA 17555
215-445-6186

