

F350 row chop tractor w/power steering, sickle-bar mower and 3-bottom plow. Ready to go! Only \$1,950!

JD 4400 combine gas engine, needs work, 2 heads, \$4,500 OBO
Ford 4-bottom plow, semi-mount.
Oliver 5-bottom plow, semi-mount. \$150/bottom
IH 504 w/2150 loader, \$5,500 OBO.
(301) 833-1847



LOST CREEK IMPLEMENT

Rt. 35 Oakland Mills, PA 17076
 Between McAlisterville & Mifflintown
 717-461-3511 463-2161

NEW TRACTORS IN STOCK

33 hp 1050 85 hp 2955
 55 hp 2355 140 hp 4450 MFWD
 75 hp 2755

Interest Free Till July 1, 1989 or
 0% Financing For 18 Months Or Low
 Rate Financing Up To 60 Months

USED TRACTORS

JD 2150, 50 h.p., 600 hrs. Coming In
 JD 1010, excellent condition
 JD 950, 27 h.p., RG, 900 hrs., nice,
 \$6,500

Ferguson 40, 40 h.p., WF, 3 pt., \$2,800
 JD 2010 parts tractor, gas, runs, \$1,500
 Farmall B, single whl. w/mower, \$900
 Farmall BN w/cult, good condition
 JD B, new tires, cults, real nice

PLANTERS & DRILLS

New 7200 4 & 6 row cons., planters in
 stock
 JD 7000 6 row, cons., dry fert., very
 good
 JD 7000, 4 row wide w/coulters, dry,
 good
 IH 400 cyclo, 4 row, dry, good
 JD 7200 4 row cons., dry fert., like new
 AC 600 no till, dry, good
 JD 1240 plateless planter, dry, good
 JD B grain drill, 17x7, grass seed, good

TILLAGE EQUIPMENT

MF 345 3 btm mtd., excellent
 JD 145 5 btm 16", good
 Ford 4 btm. 14", very good, \$500
 JD 4 btm. mtd. 16" plows, \$500
 JD 215 disc, 12' 10" w/cushion gang,
 excellent
 (3) JD transport discs, 9'-13', \$400 & Up
 JD 100 disc, 8' mtd., excellent
 JD 920 12' packer
 JD 925 cultmulcher 8', very good
 Dunham Lehr 12' cultmulcher,
 excellent

HAY & FORAGE

NH 479 haybine, very good, \$2,900
 JD 1209 mower conditioner, very good
 NH 479 haybine, average condition,
 \$1,500
 (2) JD 24T baler w/thrower, \$1,500
 IH 430 baler w/thrower, \$1,500
 (2) Fox harvesters w/heads, \$1,500 each
 NH #7 forage box w/wagon, \$800
 NH 27 blower, good

MISC.

Century 300 gallon sprayer, very good,
 \$1,800
 NH 512 spreader, good, \$800

COMBINES

JD 7700 turbo, AC, hydro, nice
 '80 JD 6620 Side Hill, excellent, loaded
 '79 JD 6620 Side Hill, very good, loaded
 '82 JD 6620 Side Hill 1982
 JD 4400, cab, AC, 13' platform, \$9,500
 MF 760 Hydro, 1163 CH, 15' platform,
 \$17,000, very good
 (2) MF 410 w cab, platform, \$3,500 each
 MF 510, cab, dsl., platform, Reduced
 \$3,500
 NH 975 w platform, cab \$3,500
 AC L630 corn head, excellent, Reduced,
 \$4,500
 (2) MF 44 corn heads, \$1,500 & \$2,500
 (2) MF 43 corn heads
 (3) JD 444 corn heads
 (2) JD 643 corn head, good condition
 JD 215 rigid platform
 NI 325 sheller, 2 row 30', good, \$2,900

(2) NEW JD 6620 Sidehill
 Combines In Stock
 Interest Free On
 New & Used Till

USED TRACTORS

- JD 2750, 4WD, Good\$15,750
- JD 4230, SGB, QR Trans.\$13,400
- JD 2350 org., nice.....\$12,300
- JD 2940 2 hyds., hi-low, nice.....\$12,000
- JD 2640, Ind. PTO, 1981, Sharp...\$11,500
- JD 2640 Hi-Low, Ind. PTO 3200 hrs.\$8,800
- JD 2440 Ind. PTO 2 hyds. 1981 \$8,700
- JD 4000 diesel, WF, 1972 \$8,600
- JD 2440 Ind. PTO 2600 Hrs..... \$8,500
- JD 2440 Ind. PTO 2 hyds. 1979 \$7,600
- JD 3130 w/cab, hi-lo, 2 hyd..... \$7,500
- JD 4020 WF, SR trans., Nice..... \$7,200
- JD 2030 Hi/Lo, Ind. PTO, 2800 Hrs.\$6,900
- JD 2030 Hi-Lo, org. paint & tires .. \$6,800
- JD 2030 Ind., PTO, HI Clearance ... \$5,900
- NH L425 Skid Loader, 2 buckets... \$5,500
- JD 1520 diesel, overhauled, fair \$5,200
- JD 1020 Dsl. Ind. PTO, Fair..... \$5,200
- Athens 12' heavy cutting disc \$3,400
- JD 730 diesel elec. start, new tires\$3,200
- JD 2010 NF gas, nice.....\$2,800
- JD 520 NF, power steering, nice... \$2,600
- JD 146 Loader w/6' Bucket \$2,300
- JD 48 Loader w/valve.....\$2,200
- JD 48 HD loader for 4020..... \$1,950
- JD heavy front blade for 4440 \$1,800
- Cab off JD 4020, side console, nice\$1,200
- M & W Turbo Kit for JD 4020..... \$800
- JD Cab off 4020\$600
- JD Rollbar & roof off 2350\$575
- JD yellow roof roll bar.....\$375

- Zimmerman Elevators, Hay Tedders
- Wagon Gears & Forage Wagons
- Farmco Metal Feeder Wagons, Bale
- Bodies & Country Boy Gravity Bins
- JD Front & Rear Weights

Reiff Farm Service

RD #2 Box 915, Goodhart Road,
 Shippensburg, PA 17527
 Interstate 81 Exit 10
 717-532-8601 Can Finance

Used Roto-Tillers
 (1) Cub Cadet
 3 Pt. Hitch, 48"
 Tiller, \$495
 (1) Cub Cadet
 Model 2A Tiller
 \$295
 Both Units In
 Excellent
 Condition

**MANOR
 EQUIPMENT,
 INC.**

Wheatfield Rd. R.D. 8
 Sinking Spring, PA
 215/678-0828

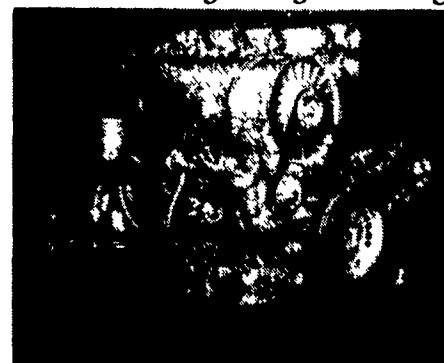
Madey Farms

Windber, PA
 814-467-8839
 814-467-7085

- AC 7580, 4WD, w/duals, nice.\$16,800
- JD 6030 w/Cab & duals, nice.\$12,900
- IH 856 Diesel \$6,200
- MF 65, 90 Choice..... \$3,200
- JD 3120 \$6,500
- Case 830 dsl..... \$3,200
- AC 210 diesel \$4,600
- Hesston #10 Stacker/Mover.....\$1,800

**Is that old diesel about to die?
 Are maintenance costs eating profits?
 Now is the time to do something about it!
 Let us show you the benefits of owning a**

**DEUTZ
 DIESEL**



**Call or Stop In - lets talk
 about your diesel power needs**

- (1) F2L 912 Deutz w/Hand Clutch
- (1) TR2 Lister w/Speed Clutch (Complete)
- (3) Used 2 Cyl. Lister Diesels
- (1) 60 H.P. VM Diesel

Your Authorized Deutz Dealer

INDUSTRIAL ENGINE SALES & SERVICE

James E. Horst

52 Queen Rd.
 Shop (717) 768-3378

Gordonville, PA 17529
 Res. (717) 687-6874



Car Dollie

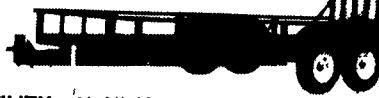


4'x8' Utility Trailers 1500 lb. G.V.W. 8" Tires



UTILITY (Tilt Model) - These trailers' standard features include, 15" White Spoked Wheels, New tires, 2" coupler, and safety chains. AVAILABLE SIZES: LENGTH: 8 to 12 feet, WIDTH: 60 to 76 inches, GVW: 3,500 lbs.

Largest manufacturer of a complete line of trailers, utility, construction, and goosenecks **QUALITY, WORKMANSHIP** and **DESIGN** are the three most obvious components in these trailers



UTILITY - AVAILABLE SIZES: LENGTH: 12 to 20 feet
 WIDTH 76 to 81 inches, GVW: 7,000-12,000 lbs., TIRES: 700-15 LT



FLAT BED 2-5/16" coupler, and self storing 80" long ramps. AVAILABLE SIZES: LENGTH 14 to 18 feet, WIDTH: 76 to 81 inches, GVW: 8,000 lbs., TIRES: 700-15 LT

**NEW 3 PT.
 INTERNATIONAL
 MACHINERY**

- 1 & 2 Bottom Plows
- Discs 4' - 8'
- Blades 5'-8'
- Box Blades 4'-8'
- Stone Rakes 4 1/2 '-8'
- Post Hole Diggers
- 1 Row Cultivators
- Dirt Scoops
- Boom Poles
- Rear Carriers
- Chipper-Mulcher
- Fertilizer Spreaders
- Concrete Mixers
- Field Cultivators
- Potato Plows
- Hay Rakes & Tedders
- Rotary Mowers 3'-7'
- 4'-6' Finish Mowers
- Bale Carriers
- Sickle Mowers
- Rototillers
- Log Splitters
- Truck Beds - 7' to 12'

**Over 200 Trailers
 In Stock
 Starting At \$495.00**

**50 Different Models
 Available**

**DEALERS WANTED
 Financing Available**



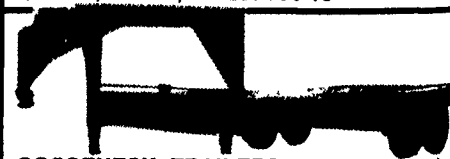
Box Dump



Car Haulers, Open Center, 7,000 lb. G.V.W. Available in 14', 16' And 18' Lengths



CONSTRUCTION (LOW DECK) - AVAILABLE IN DROP-AXLE, AVAILABLE SIZES: 6'4" WIDE x 16' LONG & 81" WIDE x 18' LONG, GVW: 8,000-12,000 lbs., TIRES: 750-16



GOOSENECK TRAILERS - All models have adjustable top crank couplers welded to heavy duty 8" channel frames. Top decks are standard on Deck-Over models. AVAILABLE SIZES: LENGTH: 18 to 28 feet, GVW: 12,000-20,000 lbs., WIDTH 76 to 96 inches, TIRES: 750-16 LT, E235X16 R



CONSTRUCTION (DECK-OVER) - All sizes have 4-foot dovetail and heavy duty 56" long attached ramps, four position pintle hook, stake pockets, rubrail and drop-leg jack. AVAILABLE SIZES: LENGTH: 18 to 24 feet, WIDTH: 8 feet, GVW: 12,000-20,000 lbs., Eight (8) lug brake axles with 750-16 tires.