

**Pa. Grain**

May 15, 1989

Report supplied by PDA

COMPARED WITH LAST MONDAY'S MARKET FOR SOUTHEASTERN, CENTRAL AND SOUTH CENTRAL PA: CORN MOSTLY STEADY; WHEAT STEADY TO .04 SPOTS TO .09 LOWER; BARLEY AND OATS STEADY TO .05 LOWER; SOYBEANS STEADY TO .12 LOWER; EAR CORN UNEVENLY STEADY, SPOTS TO \$2 LOWER.

**SOUTHEASTERN PENNSYLVANIA**  
CORN NO. 2-Y RANGE 2.95-3.25, AVERAGE 3.09; \*CONTRACT FOR HARVEST 2.63-2.74; @WHEAT NO. 2 RANGE 3.80-4.35, AVERAGE 4.02; \*CONTRACT FOR HARVEST 3.70-3.92; BARLEY NO. 3 RANGE 2.30-2.70, AVERAGE 2.44; \*CONTRACT FOR HARVEST 2.00-2.15; OATS NO. 2 RANGE 1.85-2.35, AVERAGE 2.14; \*CONTRACT FOR HARVEST 1.80; SOYBEANS NO. 1 RANGE 6.95-7.55, AVERAGE 7.27; \*CONTRACT FOR HARVEST 6.65-6.86; FEW REPORTED GR. SORGHUM #2 RANGE 2.60; AVERAGE 2.60; \*CONTRACT FOR HARVEST 2.33; FEW REPORTED PER HUNDREDWEIGHT RECLEANED BUCKWHEAT \*CONTRACT FOR HARVEST 9.15; EAR CORN RANGE 85.00-115.00; AVERAGE 97.79.

**SOUTH CENTRAL PENNSYLVANIA**  
CORN NO. 2-Y RANGE 3.00-3.20, AVERAGE 3.05; @WHEAT NO. 2 RANGE 3.50-3.85, FEW REPORTED 4.10, AVERAGE 3.69; BARLEY NO. 3 RANGE 2.15-2.70, AVERAGE 2.38; OATS NO. 2 RANGE 2.15-2.45, AVERAGE 2.26; FEW REPORTED SOYBEANS NO. 1 RANGE 7.25, AVERAGE 7.25; EAR CORN RANGE 95.00-110.00, AVERAGE 100.86.

**SOUTHEASTERN, CENTRAL & SOUTH CENTRAL SUMMARY**  
CORN NO. 2-Y RANGE 2.95-3.15, AVERAGE 3.07; @WHEAT NO. 2-Y RANGE 3.50-4.35, AVERAGE 3.79; BARLEY NO. 3 RANGE 2.25-2.70, AVERAGE 2.40; OATS NO. 2 RANGE 1.85-2.45, AVERAGE 2.14; SOYBEANS

NO. 1 RANGE 6.95-7.55, AVERAGE 7.23; EAR CORN RANGE 85.00-115.00, AVERAGE 95.93.

**CENTRAL PENNSYLVANIA**  
CORN NO. 2-Y RANGE 2.95-3.15, AVERAGE 3.05; @WHEAT NO. 2 RANGE 3.30-4.30, AVERAGE 3.66; BARLEY NO. 3 RANGE 2.15-2.40, AVERAGE 2.33; OATS NO. 2 RANGE 1.90-2.30, AVERAGE 2.06; SOYBEANS NO. 1 RANGE 7.00-7.30, AVERAGE 7.13; FEW REPORTED GR. SORGHUM #2 RANGE 2.80, AVERAGE 2.80; #EAR CORN RANGE 80.00-102.00, AVERAGE 89.22.

**WESTERN PENNSYLVANIA**  
CORN NO. 2-Y RANGE 2.85-3.25, AVERAGE 3.03; @WHEAT NO. 2 RANGE 3.90-4.00, AVERAGE 3.95; BARLEY NO. 3 RANGE 2.10-2.40, AVERAGE 2.20; OATS NO. 2 RANGE 2.00-2.60, AVERAGE 2.30; FEW REPORTED SOYBEANS NO. 1 7.15, AVERAGE 7.15; EAR CORN FEW REPORTED 80.00-100.00, AVERAGE 90.00.

**MONTH AGO**  
CORN NO. 2-Y 3.04; @WHEAT NO. 2-Y 3.81; BARLEY NO. 3 2.46; OATS NO. 22.18; SOYBEANS NO. 1 7.17; NEW EAR CORN 94.29.

**YEAR AGO**  
CORN NO. 2-Y 2.31; @WHEAT NO. 2-Y 2.91; BARLEY NO. 3 1.65; OATS NO. 2 1.90; SOYBEANS NO. 1 6.99; NEW EAR CORN 67.87.

**Regional Hay**

May 15, 1989  
Eastern, Pa.

HAY & STRAW MARKET FOR EASTERN PA. (ALL HAY NO. 2 & BETTER PRICES PAID BY DEALERS AT THE FARM & PER TON.) HAY AND STRAW FULLY STEADY.

ALFALFA 80.00-110.00; MIXED HAY 60.00-80.00; TIMOTHY 60.00-80.00; STRAW 40.00-70.00; MULCH 25.00-40.00.

**LANCASTER CO. HAY AUCTIONS**

SUMMARY OF LANCASTER CO. HAY AUCTIONS FOR WEEK ENDING 5/12/89. PRICES PER TON: LOADS: 261 HAY, 134 STRAW, AND 38 EAR CORN. ALFALFA 80.00-140.00; MIXED HAY 60.00-130.00; TIMOTHY 70.00-108.00; STRAW 53.00-75.00; EAR CORN 104.00-133.00.

**CENTRAL PA. HAY AUCTIONS**

SUMMARY OF CENTRAL PA. HAY AUCTIONS FOR WEEK ENDING 5/12/89. PRICES PER TON: LOADS: 186 HAY, 19 STRAW & 25 EAR CORN. ALFALFA 100.00-150.00; MIXED HAY 55.00-100.00; TIMOTHY 59.00-71.00; STRAW 62.00-92.00; EAR CORN 110.00-132.50.

**Vintage Hay**

Paradise, PA  
Thurs., May 18, 1989  
Report Supplied by Auction  
29 LOADS.  
ALFALFA: 85.00-117.50.  
TIMOTHY: 73.00.  
CLOVER: 35.00-75.00.  
MIXED HAY: 70.00-105.00.  
STRAW: 55.00-71.00.  
EAR CORN: 109.00.

**Green Dragon Hay**

Ephrata, Pa.  
Friday, May 12, 1989  
Report Supplied by Auction  
TOTAL LOADS: 173.  
MIXED HAY: 66.00-151.00.  
ALFALFA: 75.00-156.00.  
TIMOTHY: 74.00-130.00.  
CLOVER: 60.00, 81.00 AND 90.00.  
ORCHARD GRASS: 85.00-139.00.  
STRAW: 51.00-95.00.  
EAR CORN: 104.00-127.00.  
OATS: 2.00-2.95 BU.

**Leinbach's Hay**

Shippensburg, PA  
May 13 and May 16. Report supplied by Auction  
TOTAL LOADS: 54.  
ALFALFA: 64.00-161.00.  
MIXED HAY: 61.00-132.00.  
TIMOTHY: 67.00-92.00.  
BROME: 64.00-102.00.  
STRAW: 38.00-74.00.  
OATS: 2.90-3.10 B1  
MULCH HAY: 48.00-50.00.

**Good's Hay**

Leola, Pa.  
Wed., May 17, 1989  
Report Supplied by Auction  
TOTAL LOADS: 133.  
ALFALFA: 99.00-156.00.  
TIMOTHY: 82.00-125.00.  
MIXED HAY: 85.00-139.00.  
STRAW: 65.00-75.00.  
CORN: 113.00-128.00.  
OATS: 1.80-3.05 BU.  
ORCHARD GRASS: 70.00-101.00.  
REED'S CANARY: 86.00.  
GRASS: 115.00.

**Westminster Hay**

Westminster, Md.  
Tuesday, May 16, 1989  
Report Supplied by Auction  
TOTAL LOADS: 15.  
ALFALFA: 70.00-120.00; 2.40 BALE.  
TIMOTHY: 1.50-1.70 BALE.  
TIMOTHY MIX: 50.00-87.50.  
CLOVER: 41.00.  
ORCHARD GRASS: .60-1.00 BALE.  
GRASS HAY: 46.00.  
STRAW: 70.00.

**Seeking Profits In Commodities Trading?**

- Hedging
- Speculating
- Managed Account
- Commodity Options

Call Forney Longenecker, Commodities Investment Executive, At (717) 295-8914

SHEARSON  
LEHMAN HUTTON  
29 E. King St.  
Lancaster, PA 17603



**FOR SALE Wood Shavings & Sawdust**

- \* Delivered To Your Farm
  - \* Excellent Dairy Bedding
  - \* Economical
  - \* Year Around Supply
- Call For Price

**Martin Grain Co.**  
Mt. Joy, PA  
717-653-1085

**HERE TO STAY!**

**NEW HOLLAND SALES STABLES, INC. - THE ACTION AUCTION**

**MONDAY**

SLAUGHTER HOGS



**EARLY BIRD HOG SALE**

7:30 AM  
For Your Protection Your Hogs Must Be Identified

**10:00 AM**

HORSES MULES



**11:00 AM**



**HAY STRAW GRAIN**

**1:30 PM**

**BEEF SALE CALF, SHEEP, GOATS**



**WEDNESDAY**

**11:00 A.M.**

DAIRY COWS



**HEIFERS, BULLS**

**NEW HOLLAND SALES STABLES, Inc.**

12 Miles East of Lancaster on Route 23, New Holland, Penna.  
**717-354-4341**

Mgr. - Abe Diffenbach - 717-393-4464  
Norman Kolb - 717-397-5538

Field Representatives  
Alan Diffenbach 717-354-3297  
Luke Eberly 215-267-6608 - 738-1865

**WEDNESDAY - 1:30 P.M. FEEDER PIG SALE**

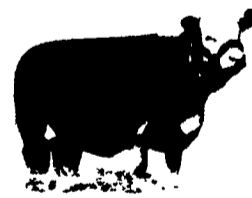


We endeavor to keep our barns cleaner than yours. State graded until 12 Noon

**THURSDAY**

**10:00 AM**

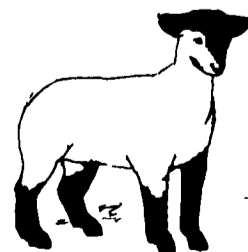
BULLS -



**STEERS - BEEF COWS**

**1:30 P.M.**

CALVES



**SHEEP GOATS**

Market your livestock thru New Holland Sales, your neighbor does  
Pick-up your check before you leave