

PAFC Announces Leadership Conference

HARRISBURG (Dauphin Co.) — The 1989 Pennsylvania Association of Farmer Cooperatives (PAFC) Young Cooperative Leaders Conference is set July 10-12 at Toftrees Resort in State College.

The 16th annual leadership program focuses on cooperative basics and issues. The target audience is the cooperative member-owner under age 35.

The educational aspects of the program are designed to "increase cooperative understanding by

exposing your cooperative leaders to their peers as well as representatives of their cooperatives such as directors, management and staff," commented PAFC President Robert M. Dever.

Dever noted that the theme for this year's conference is "Member Input Equals Cooperative Success: Preparing for the '90s." The program is planned primarily by former participants.

The annual conference draws about 40 couples from across the Commonwealth and border states.

The 1988 conference was held in conjunction with the National Institute on Cooperative Education in Rochester, NY.

This year's planning committee is chaired by Dan and Laureen Naylor, Factoryville. Other members include Charles and Becky Castle, Canton; Stan and Janice Burkholder, Chambersburg; Gordon and Carole Hoover, Gap; and Jim and Linda Compton, Clarksburg.

Registration for the three-day event is \$350.00 per couple, \$250.00 per single. The fee includes all meals, hotel accommodations and conference materials. For more information, contact PAFC at 717-232-7232 or Jim Barnett at 215-322-0200.

Keystone Farm Credit

(Continued from Page A1)

Frezzo, E. Richard Hoopes, and Gerald Kulp; from Montgomery County, Richard Bechtel; from Bucks County, Tim Ruth; from Berks County, Richard Bleiler, Wilmer Kraybill and Gordan Yorgey; from Schuylkill County, Linwood Koch and, from Lehigh County, Diane Schlauch.

At each of the five sectional meetings, Keystone CEO Bernie Flory reviewed the Boards' 1988 decision to merge and brought stockholders current on the

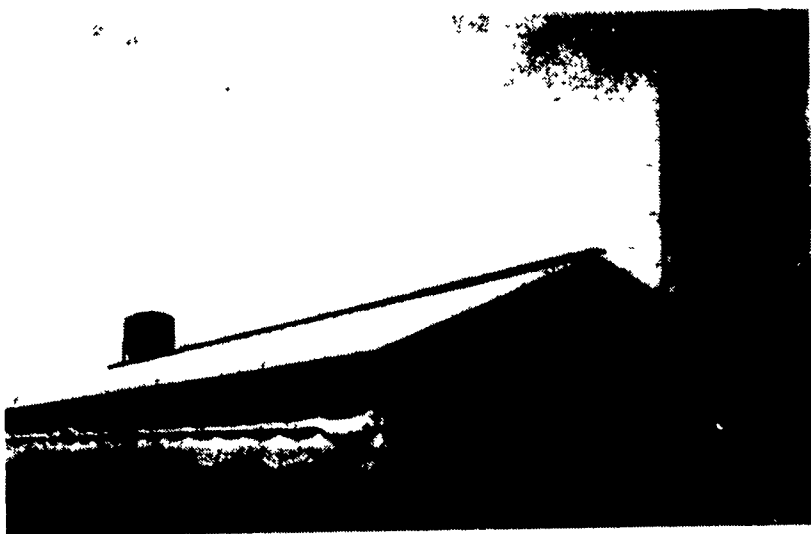
changes and enhancements to their financial institution as a result of that merger.

A member of the Executive Committee of the Farm Credit Bank of Baltimore was featured speaker at each of the five meetings; the speakers included Gene Swackhamer, District Bank President and CEO.

Keystone Farm Credit, ACA serves the financial needs of farmers and rural residents in the 15 county southeastern Pennsylvania area.

MILK. IT'S FITNESS YOU CAN DRINK.

Thanks and Congratulations to JOHN F. STOLTZFUS & POWL FEED CO On Their All New 1,000 Head Grower & Finisher Unit






Exterior View







Interior View

Building Features Are:

-  Uni-Arch Trusses
-  Doors, Windows
-  Insulation
-  SIERRA Fasteners
- 2"x6" Treated Wood Framing
- Poured Concrete Walls
-  Ridge Vents

Equipment Features Are:

-  Solid Hot-Dipped Galvanized Stabling
-  Stainless Steel Feeders
-  Total Slat Flooring (N. Carolina)
- Manual Trac Feed Delivery
- Gravity Feed Bins
-  Insulated Curtains

Let Farmer Boy's Experience Help You Design And Build Your New Hog Facility

HOURS: Mon.-Fri. 7:00 AM - 5:00 PM
Saturday 7:30 AM - 11:30 AM

Swine & Poultry Systems Specialists

FARMER BOY AG. INC.

410 EAST LINCOLN AVE. MYERSTOWN, PA 17067 PH: 717-866-7565

BEST IN DESIGN, PRICE AND EXPERIENCE
24 Hour Service