

National Grain Market
St. Joseph, MO
May 3, 1989

HIGHLY PUBLICIZED REVITALIZATION OF THE EXPORT ENHANCEMENT PROGRAM AND GRAIN PRICES HIGHER WEDNESDAY. WHEAT FUTURES COUPLE CENTS HIGHER, BUT KANSAS CITY DROPPED RAIL CAR BASIS TO LOWER QUOTATIONS 1 TO 4 CENTS. U.S.S.R. ALLOCATED 1.5 MILLION TONS OF WHEAT UNDER HEP WHICH WAS A QUESTION MARK AT ONE TIME. THIS MOVE CARRIED OVER INTO THE CORN AND SOYBEAN PITS. THIS INTERACTED WITH UNSETTLED WEATHER PATTERNS, RAINS AND DROUGHT CONDITIONS, TO FURTHER COMPLICATE THE GRAIN TRADE. FARMER SELLING DRIED UP TO NOTHING.

EXPORT NEWS: SALES OF 100,000 TONNES OF WHEAT TO SRI LANKA FOR 88 THROUGH 90 MARKETING YEAR. SALES OF 158,500 METRIC TONS OF CORN TO UNKNOWN DESTINATION FOR 88/89 MARKETING YEAR.

DATE CHANGE YEAR AGO
05/03/89 05/02/89 05/04/88 WHEAT:
KANSAS CITY 4.50-4.53 UP 2 3.01
MINNEAPOLIS 4.58 1/2-4.60 1/2 UP 1/4
3.23 1/4 PORTLAND 4.74-4.76 DN 4-9
3.28-3.30 ST. LOUIS 4.35-4.45 UP 2
2.91-3.05
CORN, U.S.

NO. 2 YELLOW: KANSAS CITY
2.69-2.71 UP 3-1 2.05-2.10 MINNEAPOLIS
2.71 1/2 UP 2 1/2 1.98 1/4 SO. IOWA
2.77-2.81 UP 3-4 2.03-2.07 1/2 OMAHA
2.57-2.59 UP 1-2 1.94-1.96

SOYBEANS, NO. 1 YELLOW: KANSAS CITY
7.55-7.59 UP 10-9 6.66-6.74
MINNEAPOLIS 7.45 1/4 UP 12 1/4 6.70
1/4 SO. IOWA 7.46-7.51 UP 10-11
6.75-6.79 1/2 C. ILL. PROCESSORS 7.55
1/2-7.65 UP 11 1/2-13 6.82 1/2-6.93 1/2

KANSAS CITY, US NO. 1 HARD RED WINTER WHEAT, ORDINARY PROTEIN. MINNEAPOLIS, US NO. 1 DARK NORTHERN SPRING WHEAT, 14% PROTEIN. PORTLAND, NO. 2 SOFT WHITE WHEAT, ST. LOUIS, NO. 2 SOFT RED WINTER WHEAT.

FUTURES CLOSE: KANSAS CITY (JULY) WHEAT 4.33 1/4 UP 2 1/4 3.08 1/4 MINNEAPOLIS (JULY) WHEAT 4.24 1/2 UP 3 3.07 1/4 CHICAGO (JULY) WHEAT 4.16 UP 3 1/2 3.10 3/4 (JULY) CORN 2.75 1/2 UP 1 1/2 2.13 1/4 (JULY) SOYBEANS 7.52 1/4 UP 11 1/4 6.94 1/4

EXPORT: BARGE OR RAIL, PORT OF NEW ORLEANS OR NORTH TEXAS GULF. NO. 1 HARD RED WINTER WHEAT ORDINARY PROTEIN 4.83-4.86 UP 2-5 3.37 NO. 2 SOFT RED WINTER WHEAT 4.66 UP 3-2 3.26-3.30 NO.2 YELLOW CORN 3.01-3.02 UP 2 2.30-2.31 NO.2 YELLOW SORGHUM RAIL 5.13 UP 3 BARGE 5.19 UP 7 3.68-3.75 NO.2 YELLOW SOYBEANS 7.77 UP 12-11 7.06-7.07.

Chester County Hay

Coatesville, PA
Wed., May 3
TOTAL LOADS: 8.
MIXED HAY: 90.00-110.00.
STRAW: 70.00-90.00.
TIMOTHY: 100.00-115.00.
TIMOTHY MULCH: 70.00.

North Jersey Market

Hackettstown, N.J.
Tues., May 2, 1989
Hay—Straw & Grain Report
ALFALFA HAY, 1 LOAD, 1.80 BALE.
MIXED HAY: 3 LOADS, .35-1.50 BALE.
GRASS HAY: 2 LOADS, .60-1.20 BALE.
TOTAL: 6 LOADS.

Westminster Hay

Westminster, Md.
Tuesday, May 2, 1989
Report Supplied by Auction
TOTAL LOADS: 30.
ALFALFA: 90.00-127.00; .75-1.90 BALE.
ALFALFA MIXED: VERY GOOD 125.00; GOOD 50.00-88.00.
TIMOTHY: 76.00; .80-90 BALE;
LARGE ROUND BALES 60.00.
TIMOTHY MIX: 65.00-67.00, 1.60-2.00 BALE.
ORCHARD GRASS: 70.00-100.00; .85 BALE.
STRAW: 77.00.
OATS: 2.50-2.55 BU.

Leinbach's Hay

Shippensburg, PA
April 29 and May 2. Report supplied by Auction
TOTAL LOADS: 81.
ALFALFA: 65.00-145.00.
MIXED HAY: 58.00-105.00.
TIMOTHY: 72.50-92.50.
GRASS: 75.00-100.00.
STRAW: 40.00-50.00.
EAR CORN: 111.00-126.00.
OATS: 2.85 BU.

Keister's Hay

Middleburg, PA
Tuesday, May 2
Report supplied by auction
59 LDS. HAY.
ALFALFA: 90.00-150.00.
MIXED HAY: 57.50-140.00.
STRAW: 9 LOADS AT 55.00-77.50.
EAR CORN: 1 LOAD, 120.00.
OATS: 5 LOADS AT 1.60-2.40 BU.

Frederick Co. Hay

Buckeytown, Md.
Thursday, May 4, 1989
Report Supplied by Auction
29 LOADS. MARKET STEADY.
ALFALFA: 7 LOADS, FAIR TO GOOD, 112.00-145.00.
ALFALFA MIX: 2 LOADS GOOD, 120.00-125.00; 1 FAIR, 75.00.
TIMOTHY: 10 FAIR TO GOOD, NONE FANCY, 75.00-92.00.
MIXED HAY: 2 FAIR, 62.00 AND 76.00.
ORCHARD GRASS: 1 AT 51.00.
STRAW: 4 LOADS BRIGHT, 64.00-81.00, 2 FAIR 52.00-60.00.

Belleville Hay

Wednesday, May 3
Belleville, PA
Report Supplied by Auction
TOTAL LOADS: 57 LDS. HAY.
ALFALFA: 95.00-150.00.
MIXED HAY: 62.50-117.50.
STRAW: 14 LOADS, 62.50-75.00.
EAR CORN: 5 LOADS, 87.50-95.00.

New Holland Hay

New Holland, Pa.
Monday, May 1, 1989
Report Supplied by Auction
TOTAL LOADS: 133.
ALFALFA: 62.00-135.00, 1 AT 150.
MIXED HAY: 62.00-125.00.
TIMOTHY: 72.00-127.00.
ORCHARD GRASS: 75.00-115.00.
STRAW: 58.00-90.00.
EAR CORN: 90.00-128.00.
OATS: 3.00 BU.

Vintage Hay

Paradise, PA
Thurs., April 27, 1989
Report Supplied by Auction
14 LOADS.
ALFALFA: 70.00-120.00.
CLOVER AND TIMOTHY: 66.00-91.00.
STRAW: 60.00-67.50.

Dewart Hay

Dewart, PA.
Monday, May 1, 1989
Report Supplied by Auction
TOTAL LOADS: 19 LDS. HAY, 71.00-119.00.
STRAW: 2 LOADS, 79.00 AND 87.00.
CORN: 34 LOADS, 111.00-126.00.

Isennock Auction

New Park, Pa.
Monday, May 1, 1989
Report supplied by auction
SLAUGHTER COWS: FEW PRICES 44.50-49.75.
VEAL CALVES: 110-130 LBS. 104.00-156.00; 95-105 LBS. 102.00-160.00; 85-90 LBS. 90.00-141.00; 65-70 LBS. 70.00-74.00.
UTILITY CALVES 200-250 LBS. 93.00-110.00; 140-160 LBS. 83.00-86.00
120-130 LBS. 84.00-89.00; 100 LBS & UNDER 74.00-151.00.
FAT STEERS: 1000-1300 LBS. 58.00-60.50; 1350-1650 LBS. 67.00-71.00;
HOLSTEIN STEERS 1450-1650 LBS. 59.00-59.25.
FEEDER BULLS: 400-465 LBS. 64.00-66.00.
FEEDER STEERS: 295-400 LBS. 68.00-72.00; 425-650 LBS. 70.00-74.00.
FEEDER HEIFERS: 530-650 LBS. 53.00-63.00.
SOWS & BOARS: 380-575 LBS. 25.00-29.50.
HOGS: 125-280 LBS. 28.00-31.00.

HOSTETTER PORK



Wanted To Buy
Crippled and
Disabled Sows
and Boars

Hogs Slaughtered For
Federal Inspection
PHONE 717-274-7609

**GRAIN & LIVESTOCK
HEDGING SERVICES
WITH
E.F. Hutton**

Jim Rohrbaugh, Account Executive
E.F. Hutton & Company Inc.
P.O. Box 3151, Harrisburg, PA 17105
(717) 763-1611
(800) 822-9553 In-state
(800) 334-3119 Out-of-state

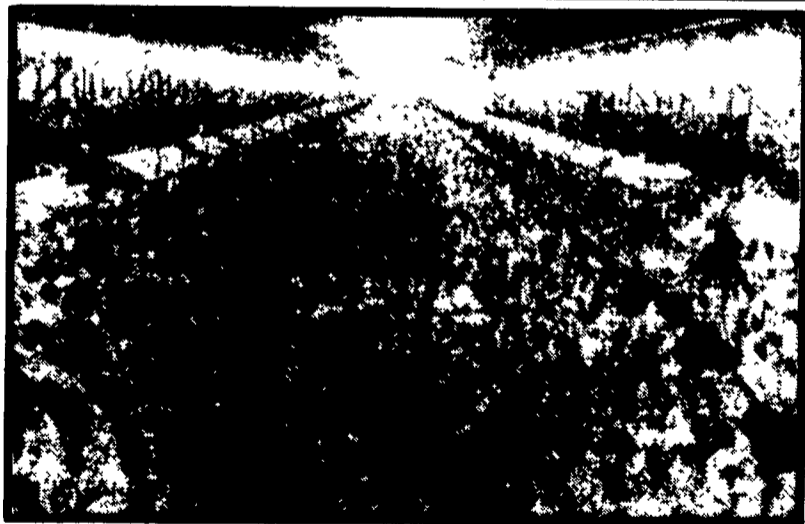
**Lebanon Valley
Flea Market**

1 mile E. of
Fredericksburg, Pa.
on Rt. #22
Every Sat.
Starting At 7 A.M.
Beginning
April 1, 1989
Inside & Outside
Stands
No charge till after
Grand Opening
For More Information
Call
(717) 865-2881
or Richard Yingst
(717) 545-5925

**KING'S AUCTION
KIRKWOOD
Hay, Straw and
Grain Auction
EVERY TUESDAY**

12:00
Located Rt. 472 5 miles south
of Quarryville or 6 miles north
of Oxford corner of Rt. 472 and
Noble Road at Rouse Tobacco
Station.
Lloyd H. Kreider
Auctioneer
AU-000513L
No out of state checks
ALL TRUCKERS AND
FARMERS WELCOME

MELVIN R. WEAVER SERVICE



Four 50,000 Size Single Age
DEKALB Breeder Flocks Managed Under
The DEKALB Certified Breeder Program.



The only full service company, in this area, to handle
the total needs of the poultrymen.



For More Information Phone:
717-653-1102
Monday - Friday 8:30 AM - 4:00 PM



Be Wise . . .
Check our
prices before
you buy!!

**SPRAY
MATERIALS**

- * BULLET
- * ATRAZINE
- * DUAL
- * BICEP
- * LASSO MT.
- * SUTAZINE
- * ROUND UP
- * BLADEX
- * BANVEL
- * LOROX
- * GRAMOXONE
- * PRINCEP
- * EXTRAZINE
- * FURADAN
- * COUNTER
- * LORSBAN
- * DYFONATE
- * ETC.

SAVE ON BULK HERBICIDES

- BULLET • LASSO MT • ETRAZINE
- BLADEX • DUAL • BICEP • PROWL

MELVIN R. WEAVER

2213 Leabrook Road, Lancaster, PA 17601
Ph: 717-569-6576 or 898-8354