

National Grain Market

St. Joseph, Mo.

Wednesday, April 26, 1989

GRAIN MARKETS TURNING INTO A WEATHER WATCH. RECORD BREAKING, SCORCHING SPRING TEMPERATURES SUCKING UP TOP SOIL MOISTURE RAPIDLY WHERE RAIN DID FALL. DRASTIC PROLONGED DROUGHT CONDITIONS IN WESTERN CORNBELT, GREAT PLAINS AND SOUTHERN PLAINS, MOST OF HARD RED WINTER WHEAT COUNTRY, CONTINUED TO WORSEN. STOCK PONDS DRY, IRRIGATION SYSTEMS OVERTAXED, WELLS RUNNING DRY AND WELL DIGGERS HAVING A HAYDAY. ALSO, RESERVE SUB-SOIL MOISTURE JUST NOT THERE MANY OTHER PLACES. HOWEVER, NORTHERN PLAINS, CORNBELT AND SOUTHEAST RECEIVING AMPLE RAINFALL. WORLD AND U.S. GRAIN, FEED, AND HAY INVENTORIES LOWER SHARPLY AFTER DROUGHT REDUCED YIELDS IN 1988 AND THIS PLACING EVEN MORE IMPORTANCE ON 89 CROPS. HIGH PRICES, HOT, DRY SPRING AND LOTS OF CORN PLANTED EARLY. TRADE MEMBERS AND ECONOMISTS CAUTIOUSLY PROGNOSTICATING USDA CROP REPORT TO BE RELEASED MAY 11. GRAIN PRICES ALREADY SUBSTANTIALLY HIGHER THAN YEAR AGO LEVELS. CONSEQUENTLY EXPORTS DOWN EXCEPT FOR CORN. RELIEF IS SPELLED R-A-I-N-S, AND MORE RAIN!

UNITED STATES: THE UNSEASONABLE HOT WEATHER IN THE WEST SPREAD INTO THE CENTRAL PORTIONS OF THE NATION TOWARD THE END OF THE WEEK APRIL 16-22. SHOWERS AND THUNDERSTORMS BROUGHT SCATTERED RAIN ACROSS THE SOUTHERN PLAINS, GULF AND ATLANTIC COAST STATES, EASTERN CORN BELT AND PACIFIC NORTHWEST. DRY CONDITIONS AGAIN PREVAILED IN THE NORTHERN AND CENTRAL PLAINS AND WESTERN CORN BELT, ALTHOUGH BENEFICIAL RAINS FELL OVER EASTERN IOWA AND NORTHWESTERN ILLINOIS AT WEEK'S END. WESTERN USSR: CONTINUED UNSEASONABLE WARM WEATHER ACCELERATES WINTER GRAIN GROWTH AND DEVELOPMENT. BENEFICIAL SHOWERS COVER MOST OF THE REGION. EASTERN ASIA: HEAVY SEASON-

AL RAINS AND SOME FLOODING CONTINUE ACROSS MUCH OF THE YANGTZE VALLEY. LIGHT TO MODERATE RAIN BENEFITS WINTER GRAINS IN THE NORTH CHINA PLAIN. SOUTHEAST ASIA: DRIER WEATHER COVERS MOST REGIONS. HOT WEATHER CONTINUES OVER NORTHEASTERN THAILAND. SOUTH AMERICA: IN ARGENTINA, EARLY-WEEK SHOWERS SLOW NORTHERN COTTON HARVEST, BUT MOSTLY DRY WEATHER IN PRIMARY CORN AREAS FAVORS HARVEST. IN SOUTH-CENTRAL BRAZIL, SCATTERED SHOWERS CAUSE SOME DELAYS, BUT OVERALL SOYBEAN HARVEST ADVANCES.

EXPORT NEWS: SOUTH KOREA'S NATIONAL LIVESTOCK COOPERATIVES FEDERATION BOUGHT 50,000 TONNES OF U.S. NO. 3 YELLOW CORN FOR JUNE-JULY SHIPMENT. DATE CHANGE YEAR AGO 04/26/89 04/25/89 04/27/88 WHEAT: KANSAS CITY 4.42-4.47 DN 2 3.09-3.10 MINNEAPOLIS 4.45 1/2-4.47 1/2 DN 1 3/4 3.35 1/4 PORTLAND 4.70-4.77 NC 3.33-3.35 ST. LOUIS 4.23-4.28 DN 3-1 2.99-3.10.

CORN, U.S. NO. 2 YELLOW: KANSAS CITY 2.59-2.62 UP 2.00-2.06 MINNEAPOLIS 2.61 3/4 UP 1 3/4 1.94 1/4 SO. IOWA 2.67-2.71 UP 2-3 1.99-2.04 1/2 OMAHA 2.50 UP 3-2 1.90-1.91.

SOYBEANS, NO. 1 YELLOW: KANSAS CITY 7.51-7.55 UP 8-10 6.63-6.69 MINNEAPOLIS 7.41 1/2 UP 10 6.60 3/4 SO. IOWA 7.44-7.52 UP 6-10 6.64-6.69 C. ILL. PROCESSORS 7.50-7.55 1/2 UP 7 1/2-9 6.73-6.84 1/2.

KANSAS CITY, US NO. 1 HARD RED WINTER WHEAT, ORDINARY PROTEIN. MINNEAPOLIS, US NO. 1 DARK NORTHERN SPRING WHEAT, 14% PROTEIN. PORTLAND, NO. 2 SOFT WHITE WHEAT, ST. LOUIS, NO. 2 SOFT RED WINTER WHEAT.

FUTURES CLOSE: KANSAS CITY (MAY) WHEAT 4.27 DN 2 3.10 1/4 MINNEAPOLIS (MAY) WHEAT 4.17 1/2 DN 1 3/4 3.09 1/4 CHICAGO (MAY) WHEAT 4.11 DN 3 1/2 3.10 1/2 (MAY) CORN 2.65 3/4 UP 1 3/4 2.01 (MAY) SOYBEANS 7.40 1/2 UP 8 6.75 3/4.

EXPORT: BARGE OR RAIL, PORT OF NEW ORLEANS OR NORTH TEXAS GULF. NO. 1 HARD RED WINTER WHEAT ORDINARY PROTEIN 4.77-4.78 DN 2-1 3.45 NO. 2 SOFT RED WINTER WHEAT 4.46-4.49 DN 4 3.32-3.34 NO.2 YELLOW CORN 2.91 UP 2-1 2.27-2.31 NO.2 YELLOW SORGHUM RAIL 4.89 DN 7 BARGE 4.98 DN 7 3.61-3.73 NO.2 YELLOW SOYBEANS 7.77-7.81 UP 9-12 6.96-6.99.

Leinbach's Hay

Shippensburg, PA

April 22 and 25. Report supplied by Auction

TOTAL LOADS: 60.
ALFALFA: 85.00-144.00.
MIXED HAY: 55.00-98.00.
TIMOTHY: 71.00-101.00.
BROME AND ORCHARD GRASS: 70.00-87.50.
STRAW: 47.00-72.50.
MULCH: 37.00-50.00.
OATS: 2.70-2.90 BU.

New Holland Hay

New Holland, Pa.

Monday, April 24, 1989

Report Supplied by Auction

TOTAL LOADS: 185.
ALFALFA: 60.00-140.00, 1 AT 165.
MIXED HAY: 60.00-116.00, 1 AT 145.00.
TIMOTHY: 87.00-125.00.
ORCHARD GRASS: 51.00-97.00.
STRAW: 65.00-92.00.
EAR CORN: 112.00-120.00.
OATS: 2.10-3.35 BU.

Dewart Hay

Dewart, PA.

Monday, April 24, 1989

Report Supplied by Auction

TOTAL LOADS: 17 LDS. HAY, 50.00-114.00.
STRAW: 5 LOADS, 54.00-71.00.
WOOD 1 LOADS, 35.00
CORN: 4 LOADS, 114.00-122.00.

Frederick Co. Hay

Buckeystown, Md.

Thursday, April 27, 1989

Report Supplied by Auction

33 LOADS. MARKET STEADY TO STRONG; DEMAND GOOD.
ALFALFA: 6 LOADS, FAIR TO GOOD, 105.00-132.00; 3 LOADS FAIR, 76.00-90.00.
ALFALFA MIX: 2 LOADS FANCY, 132.00-155.00; 1 FAIR, 64.00.
TIMOTHY: 1 FANCY, 145.00; 4 FAIR TO GOOD, 95.00-115.00; 2 FAIR, 71.00-90.00.
ORCHARD GRASS: 1 FANCY AT 95.00; 1 FAIR, 58.00.
MIXED HAY: 4 FAIR TO GOOD, 54.00-90.00.
STRAW: 6 LOADS BRIGIT, 63.00-79.00; 2 DARK, 40.00-50.00.

Chester County Hay

Catesville, PA

Wed., April 26

TOTAL LOADS: 6.
ALFALFA: 135.00.
STRAW: 80.00-90.00.
TIMOTHY: 115.00.
TIMOTHY MULCH: 70.00.

Vintage Hay

Paradise, PA

Thurs., April 27, 1989

Report Supplied by Auction
15 LOADS.
ALFALFA: 60.00-112.00.
MIXED HAY: 70.00-115.00.
STRAW: 76.00-100.00.
TIMOTHY: 70.00-92.00.

Good's Hay

Lcoia, Pa.

Wed., April 26, 1989

Report Supplied by Auction
TOTAL LOADS: 105.
ALFALFA: 42.00-136.00.
TIMOTHY: 85.00-120.00.
MIXED HAY: 50.00-135.00.
STRAW: 64.00-88.00.
CORN: 108.00-120.00.
ORCHARD GRASS: 91.00
GRASS: 57.00-70.00.
MULCH: 1 LOAD AT 45.00.
CORN FODDER: 50.00.

King's Hay

Kirkwood, Pa.

Tuesday, April 25, 1989

Report Supplied by Auction
TOTAL LOADS: 65.
ALFALFA: 69.00-143.00.
MULCH: 25.00.
ALFALFA MIX: 64.00-130.00.
MIXED HAY: 66.00-103.00.
CLOVER AND CLOVER MIX: 71.00-110.00.
TIMOTHY AND TIMOTHY MIX: 65.00-90.00.
GRASS HAY: 80.00-110.00.
STRAW: 71.00-87.00.
EAR CORN: 116.00.

Clouser Farm Enterprises

Feed Auction

Penn's Cave Grounds

Centre Hall, PA

Thursday, April 20, 1989 Noon

ALFALFA HAY: 2 LOADS, 122.50 AND 100.00.
MIXED HAY: 2 LOADS, ALFALFA MIXED, 65.00 AND 67.50, 1 LOAD CLOVER HAY, 90.00.
GRASS HAY: 1 LOAD, 67.50.
NOTE: FEED SALES HELD EVERY THURSDAY NOON.

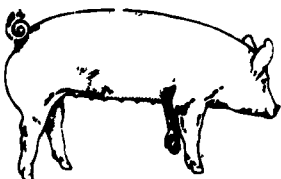
Belleville Hay

Belleville, PA

Wednesday, April 26

Report Supplied by Auction

TOTAL LOADS: 54 LDS. HAY.
ALFALFA: 92.50-145.00.
MIXED HAY: 75.00-122.50.
STRAW: 5 LOADS, 72.50-87.50.



EMERY'S BUYING STATION

OPEN TO RECEIVE YOUR MARKET HOGS AT THE GREEN DRAGON MARKET RD 4, EPHRATA, PA 17522 1 MILE NORTH OF EPHRATA ON NORTH STATE STREET.

HOURS: MONDAY, TUESDAY, and WEDNESDAY 7:00 A.M. to 11:30 A.M.

215-458-5677 Residence
717-733-9648 Office

YOU ARE PAID FOR YOUR HOGS IMMEDIATELY

Ken & Lois Emery, Proprietors

New! DTN in PA!

- * Market Quotes
- * Grain & Livestock Information
- * Weather
- * Updates for all major commodity exchanges.

- In your home or office **24 hours** a day
- All necessary equipment provided
- **\$29.95/month** plus \$295 start-up fee

Your DTN Area Representative is:
Heritage Computer Solutions

R.D. 3, Box 458-B Annville, PA 17003
Call (717) 838-1685 or (717) 397-1998 for more information.

Special Notice! VINTAGE SALE STABLE INC.

Rt. 30 10 mi. east of Lanc. in Paradise, PA
HAY, STRAW AND GRAIN SALE
Every Thursday at 1 p.m.
For Infor. 717-442-4818 Bus. Phone 215-458-8518 Home Phone L. Robert Frame Sr., President Glen S. Frame, Manager

MARKET YOUR FORMULA FED

CALVES

WITH AREA PACKER

Our valued growers weigh their own calves.

Domenic Venuto, Inc.

622 Federal Street
Philadelphia, PA 19147

215-339-9921

or 215-467-9614

or 215-389-VEAL

ATTENTION FARMERS

The New Way To Market Your Livestock

HATFIELD AND MOYER PACKING CO. AND PACKING CO.
Will Receive Hogs Will Receive Cattle

At The

BLAIR-BEDFORD

BUYING STATION

RD 1 Martinsburg, Pa.

MONDAYS - Hogs 7:30 AM to 12 Noon
Cattle & Calves 7:30 AM to 4 PM

THURSDAYS - Cattle & Calves
7:30 AM to 4 PM

- No commission or yardage fees deducted from check
- Livestock weighed and paid for immediately
- You may call our office sale day for prices

DALE R. HOOVER - Owner

Business 814-793-3077

Residence 814-793-2657

Green Dragon Livestock Sales



Location: Ephrata RD 4. 1 mile N. on North State St., Ephrata.

COWS COWS COWS SALE EVERY FRIDAY

Lots of good Northern Feeder & Stockers. Slaughter Cows - Bull Steer, Veal-lamb.

11:00 A.M. - Beef Sale 200-300 each week.
1:00 P.M. - Dairy Sale.
7:00 P.M. - Small Animal Sale.

For Special Sales and Herd Dispersals on farm or at our barn or other market information call: Office 717-733-2444, Home 717-838-4318.

WALTER H. RISSER, Proprietor

All out of state and new buyers must have cash or certified check or current letter of credit from bank.

OUR BUSINESS IS SERVICE TO FARMERS

Let us help you build a successful marketing program!

Call:

717-761-2740
800-382-1356



Grains & Livestock

- Forward Contracting
- Hedging Services

CFS PFA COMMODITY FUTURES SERVICE, INC.