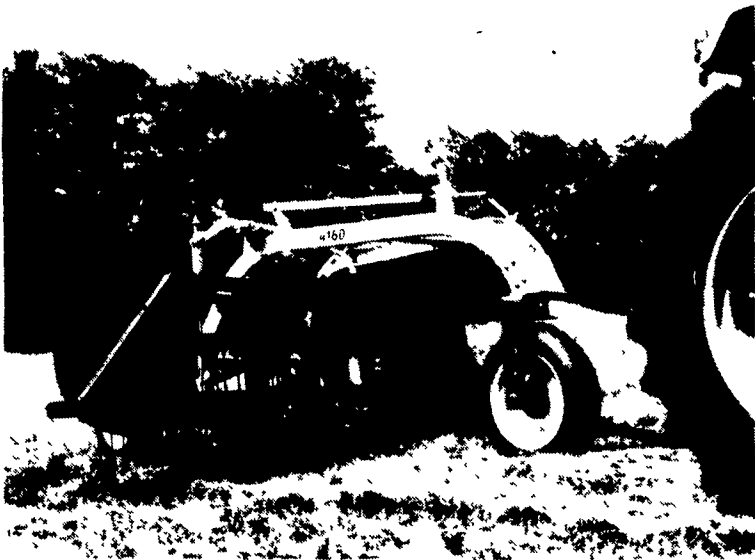




BUSINESS NEWS...

White New Idea Introduces Rake Line



This rake features a hydraulic or ground-driven system, left- or right-hand delivery, and a dual raking system. Available from White New Idea, it has formed steel channels that redistribute the weight across the main frame for positive ground traction and greater stability on hill sides.

COLDWATER, OH — Featuring better performance in all types of hay conditions, the New Idea 4100 Series rakes have been announced by White-New Idea. This new series of rakes in the New Idea hay tool line features a hydraulic or ground-driven system, left- or right-hand delivery and a dual raking system.

New Idea's ground drive rakes are designed with a unique gearbox system. Ease of engagement from working to transport setting, increased basket speed, and no stalling of the basket rotation result from the improved drive system of New Idea ground drive rakes.

With the hydraulic drive model, New Idea varied basket speed to ground speed to get consistent windrow control no matter what the ground speed of the tractor and rake. For gentle tedding or fluffing windrows, the hydraulic drive system speeds up crop drying time.

The 4100 Series have formed steel channels that redistribute the weight across the main frame for positive ground traction and greater stability on hill sides. Each model has a staggered wheel position that redistributes the weight of the basket. This wheel position gives the basket better flotation and more frame stability in tight turns. And each model has a transport and storage position for added safety when transporting.

Every New Idea 4100 Series rake is equipped with a tilt adjustment for quick positioning of the basket. The tilt adjustment allows

you to adjust for a wide range of drying conditions such as tightly rolled or loosely fluffed windrows.

Five raking bars provide continuous crop movement and gentle raking action. The raking bars have tooth bar scrapers that prevent trash build-up in some field conditions. And the 4100 Series rakes are available with steel coil teeth or rubber flex-joint teeth.

The dual raking system combines two windrows or swaths at once. The system produces uniform windrows that are ideal for either round or square baling.

The White-New Idea Farm Equipment Division of Allied Products Corporation is a major manufacturer and distributor of three major product lines with over 1500 dealers in North America. The White Farm Equipment line includes tractors, planters, tillage equipment and compact tractors and implements. The New Idea Farm Equipment line includes spreaders, planters, hay tools and self-propelled harvesting equipment. The Ag ONE line includes parts and supplies available to the White and New Idea dealers.

Allied Products Corporation is a diversified manufacturing company organized into three main operating groups: agricultural equipment, transportation/industrial products, and material technology. The company operates 15 manufacturing facilities in the U.S. and numerous distribution facilities in the U.S., Canada and the United Kingdom.

Nozzle Scale Inhibitor Available

BALTIMORE MD — Non-chemical means of preventing scale build-up on spray/fogger nozzles. Dissolves existing lime scale fast at a fraction of the cost of chemicals. Designed for pipe size 1/4 to 4-inch and flow rates .10 to 400 gallons per minute.

Additional non-chemical treatment equipment available to con-

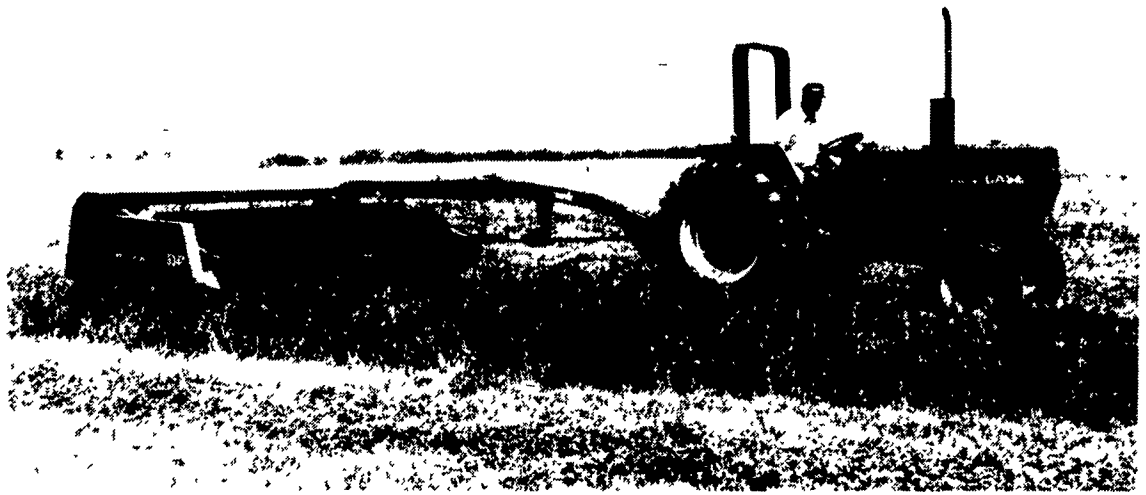
trol iron stains and biological contamination.

Water testing and consulting service available.

For more information, call Aqua-Flo, Inc. 800/368-2513 or write Aqua-Flo, Inc.--6244 Frankford Avenue--Baltimore, Md. 21206.

Dealer inquiries invited.

Mower Conditioners Round Out Case Line



The Model 8340 mower conditioner from Case IH features a 9-foot 3-inch cutting width, five-bat reel, 110-inch intermeshing conditioner rolls, and hydraulic tongue positioning. It is one of eight models in the Case mower conditioner line.

RACINE, WISC. — Case IH has introduced two new deluxe mower conditioners, Models 8340 and 8360, designed to provide efficient hay production in a variety of field conditions. The new models round out the Case IH line of eight mower conditioners.

The Case IH Models 8340 and 8360 have several distinct design features that provide improved performance and reliability in the field:

- high-speed, uniform-motion sickle drives for optimum cutting performance and minimum knife head deflection;

- rugged header frames and fully adjustable swath shields that allow a choice of narrow windrows or full-width swaths;

- 110-inch wide, intermeshing conditioner rolls that are available in either rubber-on-steel or titor (rubber-on-rubber); and

- exceptional header flotation to allow uniform cutting on uneven terrain.

A five-bat reel is standard on both models for even feeding of

the conditioner rolls. The rolls are mounted to the header rather than the frame to provide uniform swath and windrow shape.

Deluxe Model 8340

The Model 8340 has a 9-foot 3-inch cutting width, plus features operators expect on deluxe machines. Hydraulic tongue positioning allows the operator to easily steer the machine around field obstacles or change from field to road position from the tractor seat.

A single knife system cuts crops at 1,700 strokes per minute (spm). A unique automatic release linkage on the roll pressure spring assembly permits temporary roll separation, allowing slugs to pass through.

Standard equipment on the Model 8340 includes bolt-on sickle sections, a spare sickle compartment, a toolbox and a crop divider.

Center-pivot Model 8360

The Model 8360 mower conditioner offers a center-pivot design that allows the operator to hydraulically position the header to cut in either direction from any

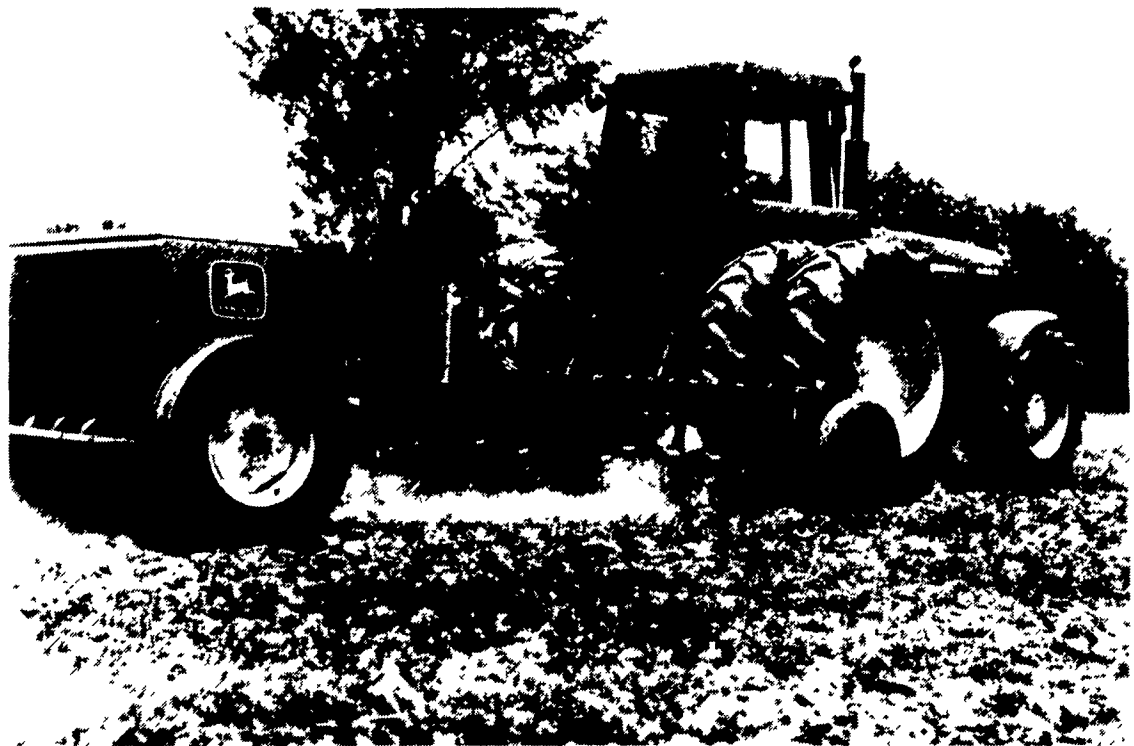
side of the field.

Hydrostatic header drive reduces the maintenance and maneuverability restrictions common with mechanical drivelines. Dual, opposed-rotation augers gently and evenly distribute the crop across the full width of the conditioner rolls, so swaths and windrows are always the ideal shape.

The Model 8360 features a 12-foot cutting width and a uniform-motion, single-knife system that cuts a 1,670 spm. The swath shield can be adjusted for smooth, 9-foot swaths or narrow, fluffy windrows. Standard equipment also includes a wear plate and center skid shoe. A minimum 60-PTO horsepower tractor is required to operate the Model 8360.

A 20-page, full-color catalog describing the entire Case IH mower conditioner line, including the Models 8340 and 8360 mower conditioners and the new Model 3309 disc mower conditioner, is available from Product Public Relations, Case IH, 700 State St., Racine, WI 53404.

Deere To Market Yetter Weight Transfer System



Through a joint marketing agreement, Deere has approved the Yetter 6700 series toolbar as allied equipment for the Deere 8000 series end wheel drills. The tool bars will be marketed nationally under the Yetter name by Deere dealers.

MOLINE, IL. — Through a non-exclusive joint marketing agreement with Yetter Manufacturing Co., Colchester, Ill., John Deere has approved the Yetter 6700 series Weight Transfer System™ toolbar as allied equipment for John Deere 8000 series and wheel drills for no-till planting of small grains and soybeans.

The toolbars will be marketed nationally under the Yetter name

by John Deere dealers.

The Yetter system enables the operator to transfer up to 3600 pounds of tractor weight onto the toolbar for better coulters cutting action. This makes drilling into residue from a previous crop, and even hard, dry soil an easy job for the 8000 series drill, according to Yetter. Drill tongue height is maintained by a parallel linkage and compensates when the toolbar is raised or lowered, enabling the

drill openers to operate with maximum efficiency.

According to Yetter, this combination gives John Deere end wheel drills exceptional no-till or mini-till capability.

In a previous agreement with Yetter, John Deere had approved the Yetter 6600 series coulters cart as allied equipment for John Deere 515 and 520 integral grain drills.