



Virginia Weekly

April 20, 1989

MARKETS IN REVIEW; APRIL 13-19, 1989. FEEDER STEERS AND HEIFERS IN VIRGINIA WERE \$1.00-7.00 LOWER AS MIDWEST PRICES WERE VERY UNEVEN, \$2.00-2.50 HIGHER.

SLAUGHTER STEERS AND HEIFERS IN VIRGINIA WERE STEADY TO 50 CENT HIGHER AS MIDWEST PRICES WERE STEADY TO \$2.00 LOWER.

COWS AND BULLS IN VIRGINIA WERE UNEVEN, MOSTLY \$4.00-7.50 LOWER WHILE MIDWEST PRICES WERE 25 CENT TO \$1.50 LOWER. BEEF PRODUCTION WAS 6% ABOVE A WEEK AGO AND 4% ABOVE A YEAR AGO. AVERAGE DRESSED

WEIGHTS WERE 11 POUNDS HEAVIER THAN LAST YEAR.

VEAL AND CALF PRICES IN VIRGINIA WERE MIXED, \$5.00 HIGHER TO \$3.00 LOWER WHILE MIDWEST PRICES WERE \$1.00-2.00 HIGHER. VEAL AND CALF SLAUGHTER WAS 10% BELOW A WEEK AGO AND 5% BELOW A YEAR AGO. AVERAGE DRESSED WEIGHTS WERE 8 POUNDS LIGHTER THAN LAST YEAR.

LAMB PRICES IN VIRGINIA WERE MIXED, \$18.00 LOWER TO \$1.40 HIGHER, MOSTLY LOWER WHILE MIDWEST PRICES WERE STEADY TO \$1.00 HIGHER. LAMB SLAUGHTER WAS 1% ABOVE A WEEK AGO BUT 4% BELOW A YEAR AGO. AVERAGE DRESSED WEIGHTS WERE 1 POUND LIGHTER THAN LAST YEAR.

SLAUGHTER HOGS IN VIRGINIA WERE 50 CENT TO \$1.00 LOWER AS MIDWEST PRICES WERE MOSTLY 50 CENT TO \$1.00 LOWER. FRESH PORK PRICES WERE STEADY TO \$3.50 LOWER. PORK PRODUCTION WAS 1% ABOVE A WEEK AGO AND 6% ABOVE A YEAR AGO. AVERAGE

DRESSED WEIGHTS WERE 2 POUNDS LIGHTER THAN LAST YEAR.

THE VIRGINIA DIRECT HOG MARKET APRIL 13-19, 1989, RECEIPTS FOR THE DIRECT HOG MARKET IN VIRGINIA TOTALED 17,739 HEAD, COMPARED TO LAST WEEK 18,432 HEAD. THE MARKET CLOSED STEADY TO \$1.00 LOWER COMPARED TO LAST WEDNESDAY'S TRADING.

COUNTRY POINTS PLANTS US 1-3 200-240 LBS 33.00-38.25 --- US 1-2 210-240 LBS FEW HIGH YIELDING 36.00-38.00 US 2-4 210-240 LBS BASE PRICE 34.00-36.00 SOWS \$24.00-34.00 AND BOARS \$18.00-24.00.

SLAUGHTER STEERS AND HEIFERS 4%; SLAUGHTER COWS 13%; SLAUGHTER BULLS 2%; SLAUGHTER CALVES AND VEALERS 0%; FEEDER CATTLE UNDER 600 LBS 70% OVER 600 LBS 11%

PRICE RANGES FOR VIRGINIA WEEKLY AUCTIONS

SLAUGHTER CATTLE STEERS; CHOICE 2-3 1000-1150 LBS 70.00-74.60 CHOICE 2-3 1300 LBS & OVER

70.50-74.60 HEIFERS; CHOICE 2-3 950-1100 LBS 67.00-72.90 CHOICE 2-3 1100 LBS & OVER 68.00-74.25 UTILITY & COMMERCIAL COWS 42.00-53.00 BULLS - 1-2 900-1300 LBS 48.00-58.50 1-2 1300-1600 LBS 52.00-65.50 1-2 1600 LBS & OVER 53.00-66.75 SLAUGHTER CALVES AND VEALERS VEALERS - HIGH CHOICE & PRIME 100-250 LBS 85.00-104.00 GOOD AND CHOICE 100-250 LBS 87.00 CALVES - GOOD AND CHOICE 250-500 LBS 76.00-82.00 SLAUGHTER LAMBS HIGH CHOICE & PRIME 95-125 LBS SPRING 79.00-82.50; WOOL 74.00 SLAUGHTER HOGS US 2-4 200-250 LBS 32.50-36.50 SOWS US 1-3 300-500 LBS 22.00-29.50; 500 LBS & OVER 27.00-30.75

FEEDER CATTLE STEERS; MEDIUM 1 HEIFERS: MEDIUM 1 200-300 LBS 92.00-108.00 300-400 LBS. 75.00-90.00 300-400 90.00-105.00FW 85.00 400-500 70.00-86.00 FW 89.50 400-500 96.00-110.00FW 80.00 500-600 60.00-77.00 500-600 79.00-92.00 600-700 61.50-75.00 600-700 72.00-86.50 700-800 61.00-67.50 700-800 69.00-75.00 800-900 58.00-68.00 800-900 61.00-72.00.

75.00-80.00; 500-700 LBS. 70.00-75.00; 700-1000 LBS. 67.50 AND DOWN.

STOCK COWS: BEEF 750.00 AND DOWN; BABY CALVES BY THE POUND, 136.00-142.00, BY THE HEAD, 157.00 AND DOWN.

SLAUGHTER COWS UTILITY AND COMMERCIAL 2-4 48.00-53.75; CANNERS AND CUTTERS 1-3 44.00-48.00. SLAUGHTER BULLS: 1&2 50.00-60.75.

LAMBS: BLUE O HIGH CHOICE AND PRIME 81.75; RED O CHOICE 82.50; FEEDER LAMBS CHOICE 72.50-79.50; SLAUGHTER EWES 17.00-20.25; HEAD EWES 92.00 AND DOWN.

SOWS 1-3 28.00-29.00.

VEALS: CHOICE AND PRIME 86.00 AND DOWN.

New Holland Horses

New Holland Sales Stables
New Holland, PA

Monday, April 17, 1989

REPORT SUPPLIED BY AUCTION REGISTERED RECEIPTS OF 310 HEAD OF HORSES, MULES AND PONIES. MARKET STRONGER.

DRIVING HORSES 470.00-925.00.
RIDING HORSES 350.00-750.00.
REGISTERED HORSES 775.00-1550.00.
HEAVYWEIGHT KILLERS 500.00-700.00.
LIGHTWEIGHT KILLERS 275.00-450.00.
MARE PONIES 40.00-100.00.
COLTS 30.00-50.00.
GELDING PONIES 40.00-100.00.
LARGER PONIES 150.00-365.00.

Shenandoah Valley Livestock

Harrisonburg, Va.

April 15, 1989

Report supplied by auction

FEEDER CATTLE TREND: STEERS: M&L-1 300-500 LBS. 95.00-100.50; 500-700LBS. 78.00-83.00; 700-1000LBS. 64.00-71.00; HOLSTEIN 300-1000 LBS. 75.50 AND DOWN.

S-L&M&L-2 300-500 LBS. 90.00-95.00.

FEEDER BULLS: M&L-1 300-500 LBS. 86.00-96.00; 500-700 LBS. 60.00-70.00; 700-900 LBS. 70.00 AND DOWN.

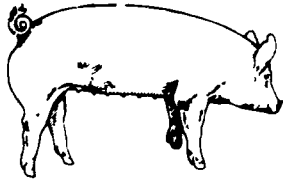
HEIFERS: M&L-1 300-500 LBS.

CRIPPLED AND DISABLED COWS, STEERS & BULLS

Slaughter Under USDA Inspection

FREE CALL
1-800-234-COWS (2697)
215-286-9400
Wayne Taylor

Lebanon, Berks,
Lancaster & Chester
Counties



EMERY'S BUYING STATION

OPEN TO RECEIVE YOUR MARKET HOGS

AT THE GREEN DRAGON MARKET
RD 4, EPHRATA, PA 17522
1 MILE NORTH OF EPHRATA
ON NORTH STATE STREET.

HOURS: MONDAY, TUESDAY, and
WEDNESDAY 7:00 A.M. to 11:30 A.M.

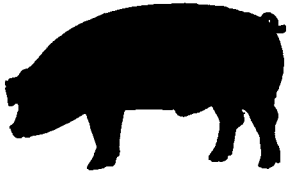
215-458-5677 Residence
717-733-9648 Office

YOU ARE PAID FOR YOUR HOGS IMMEDIATELY

Ken & Lois Emery, Proprietors



GWALTNEY of SMITHFIELD, LTD.



RECEIVING HOGS: LANCASTER COUNTY FARMERS

MONDAYS: McCoy's Branch Office, Bareville
WEDNESDAYS: (Next to Bawelle Butcher Shop)
& FRIDAYS: on Butler Rd. 717-856-9668
TUESDAYS: B & R Cattle
THURSDAYS: Marietta
717-428-3258

YORK COUNTY FARMERS

MONDAYS: Stewartstown
717-993-2564
TUESDAYS: Thomasville
717-792-2248 or 9836

Contact for information:
Ron Myers, 717-656-3291
Ed Herrmann, 717-284-3203
or Charlie Kauffman, 215-593-5674

ATTENTION FARMERS

The New Way To Market Your Livestock

HATFIELD AND MOYER
PACKING CO. AND PACKING CO.
Will Receive Hogs Will Receive Cattle

At The

BLAIR-BEDFORD BUYING STATION

RD 1 Martinsburg, Pa.

MONDAYS - Hogs 7:30 AM to 12 Noon
Cattle & Calves 7:30 AM to 4 PM
THURSDAYS - Cattle & Calves
7:30 AM to 4 PM

- No commission or yardage fees deducted from check
- Livestock weighed and paid for immediately
- You may call our office sale day for prices

DALE R. HOOVER - Owner

Business 814-793-3077
Residence 814-793-2657



* Insta-Pro Process

WE ARE OFFERING EXTRUDED * SOYBEANS

In 100 or 80 Lb. Bags Delivery
Or Bulk in Your Truck

ALSO Do Custom Extruding

TRIPLE "F" PRODUCTS

OCM HELP CLEAN THE GUT WITHOUT DEHYDRATION
S/F PLUS INOCULATES THE GUT TO PROMOTE THE CORRECT BACTERIAL BALANCE

FOSSIL SHELL FLOUR
DIATOMACEOUS EARTH (DE)
PERMA-GUARD & DIACIDE
PYRETHRIN BLENDED WITH DE
KILLS INSECTS WITHOUT CHEMICALS

NOBLE ROAD FEEDS

1426 Noble Road
Kirkwood, PA 17536
or contracting

FRANK NORBECK
(215) 932-0455

Lebanon Valley Flea Market

1 mile E. of
Fredericksburg, Pa.
on Rt. #22

Every Sat.

Starting At 7 A.M.

Beginning

April 1, 1989
Inside & Outside
Stands

No charge till after
Grand Opening
For More Information

Call
(717) 865-2881
or Richard Yingst
(717) 545-5925

SWINE PRODUCTION SALES AND SERVICE

Feeding Programs
And Services To
Meet Your Individual
Needs

Computerized
Record Keeping
System

Contracts
Available



Supplying Farm Fresh
Feeder Pigs

Marketing and Hedging
Services

Marketing of Genesis
Breeding Stock

Developing Individual
Financial Programs

Quality Products And Services - Working For YOU

419 West High Street
Elizabethtown, PA 17035

Elizabethtown
(717) 367-1525

PA Toll Free
1-800-468-5524

Shippensburg
(717) 532-7845

OUR BUSINESS IS SERVICE TO FARMERS

Let us help you build a
successful marketing program!

Call:
717-761-2740
800-382-1356



Grains & Livestock

• Forward Contracting • Hedging Services

CFS PFA COMMODITY FUTURES SERVICE, INC.