

MAIL BOX MARKET FOR SALE

Spring lambs, ewes & rams. Lanc. Co. 215-286-5012 or write Thomas RD 1 Box 322, Morgantown, Pa. 19543.

3 gas pumps for non comm. use. not antique, make offer. Montg. Co. 215-855-5204 after 6:30 p.m.

John Deere tractor 45 HP gas windfront, new tires 14.8x28 3 pt. hitch, new point field ready, nice tractor. Cambria Co. 814-743-6927.

John Deere 346 heavy duty hay baler with wide head. Ex. Cond. Perry Co. 717-789-3965.

Cardinal 16 ft. portable elevator w/elec. motor \$300. Century 200 gal. sprayer w/roller pump \$400. Three IH 51 silage wagons, Berks Co 717-933-4859.

One John Deere 700 grinder mixer also one Gehl 120 grinder mixer, both in ex. cond. Somerset Co. 814-629-5174.

Frontier stove (wood only) with fan, good cond. Lanc. Co 717-367-5939 after 5.

16 40' trusses, good cond \$40 each. 5 year old saddlebred. Rufus Martin RD #1 Denver, Kramermill Rd. 17517. Lanc. Co.

Ford #140 3 pt. hitch, 3 bottom auto. reset plow, Farmall 2 row mounted fertilizer, side dresser. Luz. Co. 717-675-5856 after 4 p.m.

Sickle bar mower for F12 \$85. Caterpillar 10 high clearance crawler, runs good \$950. Luz. Co. 717-759-0921.

Hay, all/tim mixed, 1st and 2nd cuttings, near Tamaqua. Sch. Co. after 6 p.m. 717-467-2609.

Ontario grain drill 16 disc, good cond \$250. 215-298-2759.

AC 3100 10' offset disc harrow, like new 2 row tool bar cultivator. Lehigh Co. 215-767-5497 evenings.

Ford 9N good cond. 12 volt, 3 pt. many new parts including clutch \$1400. Northampton Co. 215-588-8554.

JD L good paint, new rear tires, real nice tractor, runs good \$1450. Bucks Co. 215-346-8576 after 5 p.m.

Drainage tile, 5 20' lengths 12" diameter. 300 gallon skid fuel tank with pump, 40 gallon saddle tank. Chester Co. 215-269-9961.

Oliver 77 with Oliver front loader 12V system \$1200 or BO. Harford Co. 301-838-4391.

Chihuahua male 1 yr. old chocolate, 1 female 5 yrs. old fawn, 1 male 10 wks. old, tan. Lanc. Co. 717-665-4537.

Stake box stall partitions & rolling doors, hay racks, antifreeze, sprockets, large vises, forges. 215-843-1276 or 483-9798.

Gehl 1200 harvester with electric, hydraulic controls, 2 row narrow corn head, 7 ft. hay head \$6500. Lanc. Co. 215-445-4685.

717 Super New Holland forage harvester with 30" two row head and pickup head, good cond. Mineral Co. W. Va. 304-726-4708 or 726-4380.

75 Dodge van, V8, auto, runs good, has some rust \$200. Lanc. Co. 717-529-2126.

Fertilizer/lime spreader 8 foot spread, steel wheels, kept inside and oiled, ex. cond. \$200. Harford Co. 301-836-9442.

MF baler #3 need work or for parts \$125. Northampton Co. 215-588-0198.

Oliver 543 no till planter Unverferth, McCurdy fertilizer auger, Artway chuck wagon, good cond. NH 717 chopper, two Lamco chuck wagon, Harford Co. 301-692-2602.

73 Ford F600 cab and chassis 330 8 cylinder, just painted \$2500. 301-857-4385.

White 5400 air-flow no-till and con. corn planter, soybean plates, field ready \$1500 OBO. Carroll Co. Md. 301-848-3559.

JD KBA 28 disc field ready \$225. 18'x8' wagon bed with hay racks \$175 OBO. Lanc. Co. 717-354-2732.

269 silver anniversary, New Holland baler. very good cond, always kept inside. Union Co. 717-922-4426.

125 1x6x8' oak fence boards \$2 per bd. or \$225 10t or best offer. York Co. 717-432-4228 after 6 p.m.

JD 2440 new style 2800 hrs., new rubber, new seat, big hyd. pump. Wash Co. Md. \$9800. nice tractor. 301-733-3393.

Corn planter JD 494A soybean corn plates, well kept baler NH 67 w/thrower, straw, hay by ton or bale. Chester Co. 215-593-6390.

Amish carriage hyd. brakes, good cond. \$875. Wash. Co. Md. 301-824-2159.

Arabian patent leather show harness, brand new, never used reasonable \$375. Berks Co. 215-845-3707.

Coleman generator 4000 watt 8 HP mint cond. \$425. Call between 5 p.m. & 9 p.m. Chester Co. 215-873-1318.

1930 GMC trk motor with trans. clutch used, as stationary engine, all gauges, etc. can hear run. Ex. cond. \$200. Carbon Co. 215-377-2965.

NH Model 27 baler w/thrower \$1500. Ex. Cond. Cambria Co. 814-472-8068.

Int. #47 baler with #10 thrower, good cond. field ready, always kept inside \$1200. Somerset Co. 814-267-5197.

Five Charolais and Charolais cross steers and heifers 700 lbs. 85 cents, good road paving box for dump truck \$1000. Lanc. Co. 215-267-6782.

Milk goat registered Nubian \$85. Also goat milk for sale. Alvin B. King, 250 Blank Rd., Narvon, Pa. 17555.

John Deere 3020 gas engine runs good. Lanc. Co. \$700. 717-898-0675.

Cardboard egg flats, boxes, plastic egg flats, round hog feeder, watering trough best offer. Lanc. Co. 717-628-1857.

Crystal tips ice maker, ideal for produce growers, make your own ice \$175. OBO. Lanc. Co. 717-656-7209.

IH 400 corn & soybean planter 6R liq. fert. excellent cond., \$1500. Northampton Co. 215-252-1344.

Ford F350 dump truck 1985. Also hose reels for spray equip. & Dorset crossbred ewes & rams. 215-932-9395.

New 4R MF #39 corn planter, only used for 10 acres. Leb. Co. 717-865-2739.

Small flock of young sheep mostly Rambouillet crossed. Fulton Co. 717-485-4927.

Mixed clover, timothy hay, \$1/bale. Bath, NY. 607-776-4465 at 8AM-Paul Murat.

Purebred Simmental bull, 1 yr. old. \$750. Franklin Co. 717-352-2071 after 8PM.

25 free stall dairy cows, all stages lact. health papers, preg. check. Snyder Co. 717-374-4224 after 9PM.

40' rubber belt conveyor, AC 438 head, M combine parts JD 3PTH cultivator 61 Chevy 10' hoist 14' JD disc parts. Mommouth Co. 609-448-0748.

Gravelly tractor 50" deck 16HP ex. cond. \$3250 OBO. Midd. Co., NJ. 201-249-2989-leave mess.

Plants-cauliflower, broccoli & cabbage \$4.95 @ #60 flat, ready now. 1975 Malibu 4-door 350 AT, PS, good tires, wrecked back, \$150. Lanc. Co. 717-665-9351.

Surge oil reclaiming milker pump 50CFM \$300, NI hyd. engine for #214 manure spreader \$135, 1000 free skids. Adams Co. 717-359-4383.

Gasoline backpack mist sprayer, works great \$200. 350 Honda for parts. Wanted: Yamaha dirtbike 80cc to 175cc. Berks Co. 717-933-4027 after 6 p.m.

20 KW single/3 phase generator D4400 Cat motor complete with control panel and metal storage building, Somerset Co. 814-926-3037

AC M crawler 1935-39 Ct RD-6 dozer 1935-39 will go for scrap if not sold soon. 814-324-4582.

Jersey family cow fresh 3 weeks. Aaron H. Zimmerman, 105 Linden Grove Road, New Holland, Pa 17557.

Reg. Romney rams twins, 3-3-88, spinning wheels, beautiful clean fleeces, Adams Co. 717-642-6345.

Two ponies, appaloosa and paint; saddles, cart, harness, loved but sadly outgrown \$400. Bucks Co. 215-493-3563.

Large ground drive Lely fertilizer spreader, 1200 to 1400 lbs. cap. \$800. Christ Fisher, 323 Hagers Rd., Strasburg, Pa. 17579.

John Deere L tractor w/plow, cultivator, snow plow, wheel weights, \$1500 firm, 75 bushel ground driven manure spreader \$175. Dauphin Co. 717-566-2186.

4 yr. old black nose Jack mule. Mans mule. Samuel E. Beiler, 458 Stoney Hill Road, Quarryville, Pa. 17566. Lanc. Co.

Farmall Super C with fast hitch and cultivators, on steel. Lanc. Co. 215-445-7527.

JD Model B 1937 90% restored \$1000. Franklin Co. 717-597-4213.

IH Super Chief 3-14" trail plows, hyd. lift \$225 10' spring tooth harrow \$125, 13' travel trailer, sleeps 4 with icebox stove \$750. 717-567-9340.

Gleaner A combine for parts. Wanted: pickup truck fuel tank. Lanc. Co. 717-367-0874.

John Bean 200 gal. orchard sprayer, 4 cyl. Cont. engine Royal Bean 20 pump hi-pressure guns & booms, seat & platform \$600. Warren Co. 201-689-3332.

IH Model 550 plow 6x16 semi-mounted fit. or 3 pth trip bottoms, remote cyl. VG \$550. Warren Co. 201-689-3332.

Oliver 1855 38" radials, solid tractor \$7500. Neg. Also complete line of other farm equip. Leb. Co. 717-469-0356 or 469-2138.

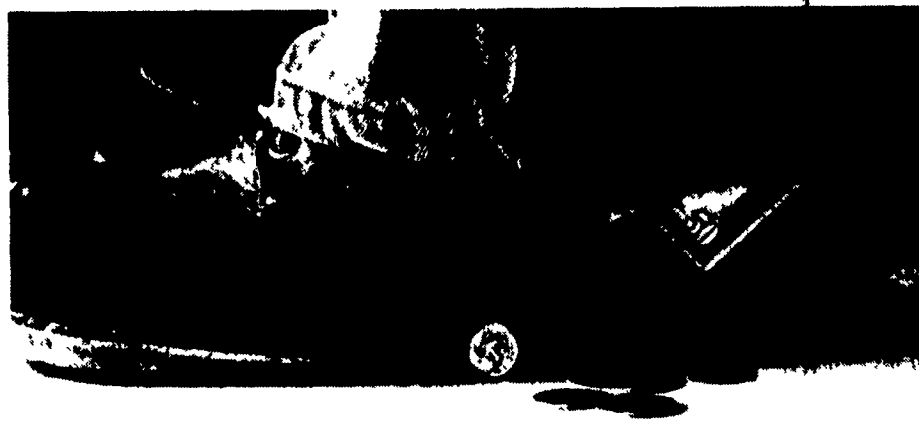
Sheep for sale, commercial flock lambing rate 1.5% firm, Dorset Suffolk crosses sell as flock. Watertown, NY 315-785-0065.

16' grain elevator (aluminum) car roof carrier (new). Turbo jet egg washers. Sch. Co. 717-668-2078.

JD 1219 mower cond., new never used \$8500. Westm. 412-238-4381 night, 412-238-4940 day.

1974 4WD pickup, runs great, fiberglass cap; 1980 Olds dsl. coupe; 1965 Mustang conv., partly restored. Hunterdon Co. 201-782-4797 anytime.

Any Other Feeder Is Like Having A Hole In Your Pocket



Wasted feed is wasted money.

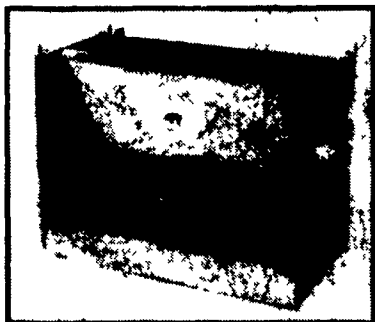
HOG SLAT stainless steel feeders *save feed*. It's that simple. And stopping excessive feed waste keeps money in your pocket.

No other feeder has the patented "feed saver" design of HOG SLAT.

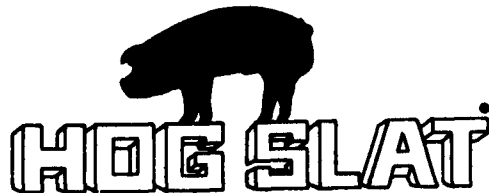
Compare Features:

- Exclusive multidirectional agitator gate.
- High quality stainless steel construction.
- Convenient 4 corner top adjusting.
- Nursery, finish, sow and cage feeders available.
- Competitively priced.
- Made in U.S.A.

Compare feeders — and you'll buy HOG SLAT stainless steel feeders.



US Patent 4308518



TRI-COUNTY CONFINEMENT SYSTEMS, INC.

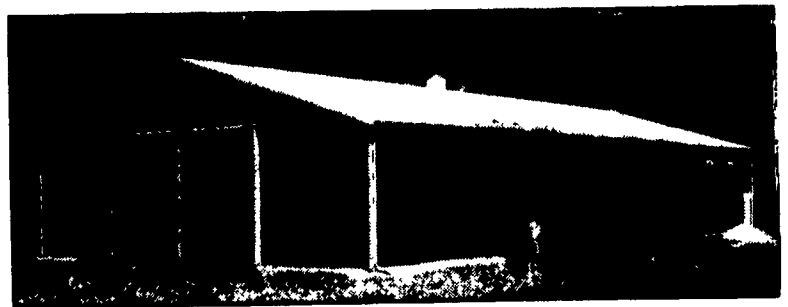
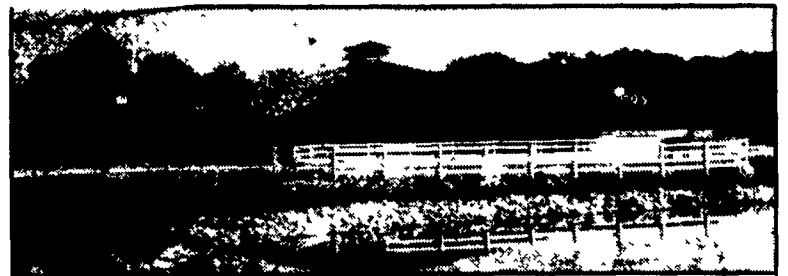
608 E. Evergreen Rd., Lebanon, PA 17042

PH: 717-274-3488
Hours: Mon.-Fri. 7:00 to 4:30



MORTON BUILDINGS Since 1903

- Horse Barns
- Riding Arenas
- Garages
- Warehouses
- Offices
- Shops
- Equipment Storage
- Aircraft Hangars



WINTER SALE PRICES IN EFFECT Free Weather vane with every building Purchased

MORTON BUILDINGS, INC.
Excellence — Since 1903

Contact The Office Nearest You:

- 3368 York Rd., Gettysburg, PA 17325 717/624-3331
- P.O. Box 126, Phillipsburg, NJ 08865 201/454-7900
- P.O. Box 361, Centre Hall, PA 16828 814/364-9500

Call or write today for more information

1-800-447-7436

Illinois only, call 1-800-6686