

**6 REAL ESTATE**

**TIOGA COUNTY**  
Call about these country homes... Pretty modular & pond on 10 acres, \$59,500.; Farmette, 2 ponds on 45 acres, \$115,000.; Elegant 140 year old colonial on 3 acres, \$125,000.; Post & beam cabin on 8 acres, \$45,900.  
Koch RE  
107 E. Main Street  
Westfield, PA 16950  
814-367-5380.

**Tioga County Business Opportunity. Owner Retiring.** Established, profitable auto & snowmobile dealership, excellent location, 3-acre lot, modern facilities. \$215,000. Some Owner Financing. Koch Real Estate, 107 E. Main St., Westfield, PA 16950 814/367-5380

**UNION COUNTY;** Steer & Hog Farm. 153 acres, 4 bedroom farmhouse, barn, wheelbar shed, Harvestore & concrete silo w/ unloaders 17 stall farrowing house, nursery & dry facilities Tammy Brouse, 717-742-3927. Villager Realty, 717-966-3136

**WANTED:** Land to rent in Conestoga & Millersville area 717-393-1490

**WANTED** Sell your farm with leaseback possibility! Buyer is most interested in broiler operations. Call Ken Wolfskill at Staverosky Real Estate, (717)733-1100, for details.

**WANTED TO BUY:** Farm in Ephrata, Akron, Rothsville, Lititz area. 717-738-3104

**Wanted:** Farm set up for Dairy to Rent or Lease Purchase or? Need almost immediately 215/536-1047

**WEST VIRGINIA MOUNTAINS.** 98 A in SECLUDED. Nice get-away place. Wooded and grown-up fields. Spring. Camper. Nice setting. \$39,000. 30A WATERFRONT FARM. House, garage, barn and other buildings. Fishing in lake. Most tillable. \$99,000. 10A near town. 6 acres tillable 3 acres wooded. Stream. \$17,500. 100 acres fenced. Several acres tillable. Large barn. Dwelling \$78,000. Klutter Realty, Terra Alto, WV 26764. Phone 304-789-6933

**Dairy Farms For Sale On Maryland's Eastern Shore**  
Call  
**301-634-2767**

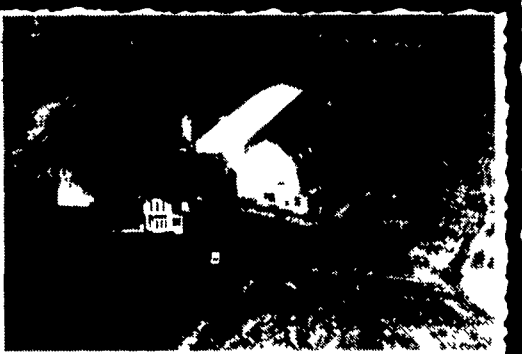
**CABIN FOR RENT**  
Mountain Cabin McClure, Pa., Mifflin County on 315 acres, utilities. Great for families, hikers, turkey, bear & deer hunters \$150/Weekly  
**717-658-9555**

**CASH FLOW FARM**  
103 acre modernized Turkey Farm, 80 acres tillable, stone farm house, and much more. Call  
**717/757-9487**

**NORTHEASTERN BERKS COUNTY NEAR ALLENTOWN**

90 Acres - 4 bedroom stone two story, beautifully restored home with front to rear central hall. Wide plank floors. Living room with fireplace. Solid walnut kitchen. 8x54 barn, carriage shed. Truly a wonderful buy at \$975,000.00.

Call  
**Homer J. Kershner**  
**RE/MAX**  
REALTOR®, CRB, GRI  
of reading 2630 westview drive, wyomissing, pennsylvania 19610 Ph. (215) 670-2770



**Poultry Farm**  
Large poultry house 40x3000 (12,000 sq. ft.) with 25 to 26,000 bird capacity. Another 4 story barn 40x64 with 10,000 sq. feet. 66 plus acres with 40 tillable & 10 A pasture and 12 acres of woods.  
Very attractive 4 bedroom home that has been well maintained. The property is very neat and with good income. Now in full operation. Call for more details.  
**Price \$185,000**

**Endless Mt. Real Estate**  
RD #1 Box 203-A  
Covington, Pa. 16917  
**717-659-5684**  
Richard Chamberlain 717-549-4173  
Don Chamberlain 717-549-4721  
Bill Smith 717-549-5146  
Jake Ensminger 717-659-5245  
Vester Ensminger 717-549-6301

**DAIRY FARM**

Finally we have the perfect dairy farm for your needs. 177 acres of prime Lancaster County, Chester and manor silt loam, gently rolling including two streams and fantastic stands of alfalfa. Top this off with modern 60 comfort stall barn with an energy efficient gravity flow manure system and 3 silos. A large two unit farm house and a 60x40 implement shed are a bonus. All for less than \$5000 per acre. Call 1-800-325-2131 or 717-786-2131.

**YORK COUNTY CAGE LAYER FARM**  
Nearly 40 acres of productive farm ground with over 70,000 birds. Attractive contract with an excellent income. Equipment is updated and in top condition. Two homes on property are in very good condition. Working operation ready for new owner! All for \$550,000. Call 717-464-4700.

**TOP PRODUCING FARM GROUND**  
In Southern York Co. 130 total acres with 115 acres tillable and 8 acres wooded. No building, high producing loam soils. Spring & stream through property. \$249,000. Call 717-464-4700.

**POULTRY FARM**  
186,000 cage layer operation in the Holtwood area. Two buildings are completely automated. Excellent contract. Farm consists of 27 acres. Beautiful 218 year old stone home with 5 bedrooms. 2 original colonial bake ovens on property. Call for more details at 717-786-2131.

**Century 21** 717-786-2131  
717-464-4700  
717-299-2101  
**AMERICAN HERITAGE**

**PENNA FARMS**

**FRANKLIN CO.**  
108 Acres **General Farm.** w/bank barn, 70 crop acres, 25 wooded, 12 pasture, road frontage, stream, restored log 2 story dwelling w/L&S Stone exterior. PRICE ADJUSTED.

**CUMBERLAND CO.**  
**Modern Dairy Complex** - 100 free stalls, double 6 milking parlor, 6 units w/weigh jars - 1,000 gallon tank - computer system, 4 stall 2 feed unit - manure lagoon - 2 Harvestors 20x60 - 20x80 - 20x70 stave silo w/ conveyors to feed trough. 88 acres murrill soil - 4 bdr. stone dwelling.

Buyers for farms 50 acres to 250 acres with or without buildings. General or dairy complexes. If you are thinking of making a change, give us a call for a free evaluation of your property. Call the Farm Professionals.

Charles Wenger, GRI, 263-0945  
Fred Wittle 776-5369  
George Ebener 249-4979  
Wilbert Diehl 776-7707

**GEORGE L. EBENER & ASSOCIATES REALTORS**  
139 W. High St., Carlisle, Pa.  
Ph. (717) 243-6195

**NEW YORK FARMS!**

**#974** - For the farm buyer who has been looking for that very special farm! Farmer wishing to retire, has listed with us his showplace farm with a beautiful private setting. Exceptionally good buildings with well drained alfalfa soils, located close to recreation areas, skiing and fishing. 230 Acres, flat to gently rolling land mostly in two fields. 9 room home, 4 bdrms., 2 baths, dairy barn has 80 big tie stalls, 2" pipeline, 2 silos, manure storage, machinery bldg., taxes reasonable. One of the nicest farms we have seen. Registered cattle and equipment also available. \$255,000.

**#967** - A Great Buy! exceptionally clean operation. 100 cow freestall barn, 100 stalls for milking cows, 70 stalls for dry cows and heifers, double six parlor (12 units auto-take-offs). Parlor and barn in excellent condition; silos; machinery building; 2 houses; 265 acres gently rolling land, good location. Asking \$325,000.

**#975** - A Great Farm & Investment. 820 acres, Honeoye and Lima soils; double 14 herringbone parlor, 500 cow capacity barns, 3 houses, large road frontage, located in an area where land is rapidly appreciating. Asking \$825,000.

Dick Posson, Broker  
**POSSON REALTY**  
Norwich, N.Y. 13815  
**(607) 334-9727**  
Please call for appointment.

**WIMPLE ASSOCIATES**

**ATTENTION CROP FARMERS & DAIRYMEN:** This 475 acre creek valley farm has been in the same family for ages. It has 350 tillable acres of some of the area's best soils. Lots of river flats. Barn has 110 stalls, 2" Surge pipeline, new 1500 gallon tank, (2) 24x60 silos plus 14x34 with unloaders. 20x55 bunker. Heifer facilities for 75 head. Two good homes, 6 aqnd 14 rooms. Also 12x60 trailer. 230 head and full line of machinery available. \$390,000. For appt. eve. call 518-762-8931.

**HIGH-EFFICIENCY FARM NEAR COBLESKILL:** 330 acres with 200 tillable. Very deep Mohawk-Honeoye soils. Barn has 116 stalls with 2" Surge pipeline, 25x80 Harvestore plus 20x60 and 20x50 concrete. Large home with apartment. Also new 14x70 mobile home. \$305,000. For appt. eve. call 518-993-2431.

**BEAUTIFUL BRICK ITALIANATE/ COLONIAL** home circa 1869 is said to originally been a Nunnery, has several large impressive rooms, arched windows, fancy woodwork and plank floors. Very impressive lines. 98 woodsey acres at the edge of a quiet, small community. JUST LISTED! \$110,000 call 607-792-3355 or...

**MORT WIMPLE ASSOCIATES**  
SLOANSVILLE, N.Y.  
518-875-6355  
FAX: 518-875-6749  
**FREE FARM CATALOGUES**

**So. Northumberland Co. & Surrounding Counties**  
**19-57 acres,** excellent 2-4 bedroom home, no barn, large pond, large water supply from spring. No Down.  
**200 acre landlot,** 3 Harvestores, 8 acres newly fenced. Owner financing. \$77,000.  
**87 acres,** 75 tillable, excellent soil, large pond site. No structures. \$2,000 per acre. Rent option or no down.  
5 miles south of Danville off of Route 54  
**120 acres,** over 5000 feet road frontage, stream, no house. \$169,000. Owner Financing.  
**47 acres,** mostly clear farm land, stream thru, excellent for Christmas trees. No Down. \$69,000.

**PETER B. CORTELYOU**  
Real Estate Herndon, PA 17830  
Peter B. Cortelyou, Broker 717-758-9177

**THE REAL ESTATERS OF MANSFIELD**  
65 Williamson Rd., Mansfield, PA 16933  
(717) 662-2138  
Evening - 659-5849  
Fax (717) 662-3611

**DAIRY FARM - IMMEDIATE POSSESSION**  
Between Elmira & Corning NY. Very close to PA line. 1 1/2 story partially remodeled farm house. Older double 6 milking parlor with free stall barn for 74+ mature cows. Heifer barn, 3 concrete silos, milking equipment, 2 bulk tanks & silos unloading included. Approx. 62 acres. JUST \$93,500. Or 201 acres with buildings and silos. JUST \$156,000.

**START TO DAIRY!**  
Large dairy barn (bank barn w/new one story attached addition): 50 tie stalls, 3rd row w/10 yearling stalls. Complete milking system w/4 DeLaval units, 850 gal. Mueller bulk tank. Two stave silos 14x65, 12x36 and 2 good unloaders. Trailer with addition and deck. A lot on 57 acres for only \$83,900. M-459.

**BUILDING SITE FOR HOME OR BUSINESS**  
Situated on Rt. #15 in Lindley, NY. Approx. 60± acres a short distance from Painted Post & Corning, NY. Long road frontage on both Rt. #15 and Watson Creek Rd. Provides many options for highest and best use. Electric available on site. Priced right at \$490 per surveyed acre. \$29,500 is the asking price. #M-423.

**NORTH CENTRAL PENNA**

**Excellent farmette on 16.9 acres,** mostly open, with 2 sty bank barn, partially remodeled house with 4 bdrms, 2 baths, new kitchen, all in good condition. Property can be bought with 11.9 acres for \$64,000. Asking \$72,000 #979

**85 ac. operating dairy farm,** 111 tie stalls, pipeline, 1000 gal. bulk tank, barn cleaner, 3 silos, heifer facilities, outbldgs, stocked pond, 6 bdrm house, LR, DR, kit, etc. Possible lease land available. Asking \$155,000 #1011

**85 acre Dairy Farm** near PA Grand Canyon, 36 tie stalls, 14x50 silo with unloader, bulk tank, barn cleaner, 2 story home, 6 miles from Wellsboro. Asking \$130,000 #964

**JUST LISTED** - Panoramic views on this 240 acre farm with 80 acres tillable bal. pasture & woods with springs & stream. Nice farm home with kitchen, Lr, den, bath & 3 bdrms, recently remodeled. Large bank barn for dairy, beef, etc. Machinery shed, silos, plus much more. One for the younger tiger or weekend hobby farmer at only \$150,000 #1015.

**Koch REAL ESTATE**  
9 Cone Street  
Wellsboro, PA 16901  
**717-724-3500**