

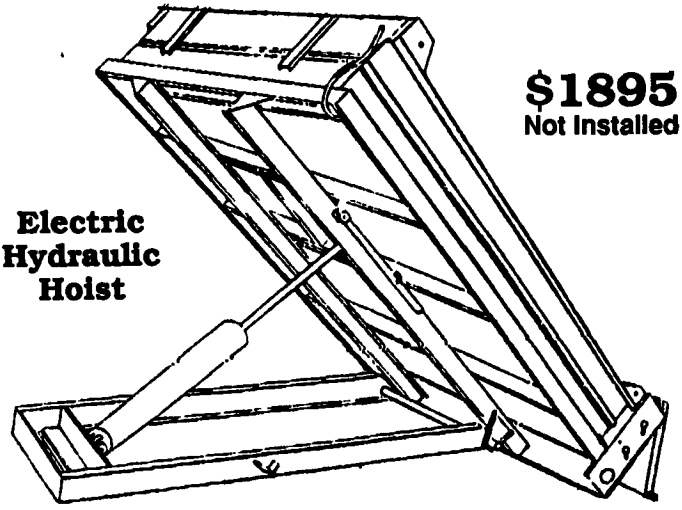
**'79 Mack, 315 engine, 9 speed, wetline, good shape, and new tires on rear**  
**'81 Chevy pickup, 305 V8 engine, 4 speed overdrive, and new clutch**  
**(215) 857-5754**

Mack Tractors, 3 single axles, one 1962 B-61, two 1966 R-600's duplex and triplex trans, two with wet lines, cabs, have rust otherwise runs perfect, call evenings 201-946-3489.

Milk Truck 3250 gal. tank. 1978 Ford Louviwell 8000 10 wheeler lift axle cat motor, 3208-ING, good condition. Call 717-292-3036.

**NEW TRAILERS:** 14' 2-axle, \$1,200.; 16' 2-axle, \$1,300.; 16' 3-axle, \$1,450 All with brakes, ramps and jacks. 717-784-1779

**8 Ft. Dump Body For 3/4 Ton Pickups**



**\$1895**  
Not Installed

**Electric Hydraulic Hoist**

SUBFRAME WITH HOSIT MOUNTED TO DUMP BODY



**Hostetler Truck Bodies & Trailers**

Rt. 322, Milroy, PA 17063  
717-667-3921

**FOR SALE**



1981 Int. diesel P/S - A/B 5+2 spd., crew cab dump (8) other crew cabs, gas & diesel to choose from.



1972 Int. P/S, A/B 5+2 spd. - 34,000 GVW - with stainless steel farm pickup (5) other SS farm pickup trucks and trailers.



Ref. & Dry Bodies of all sizes: from 9 ft. to 22 ft. w/ or w/out Chassis - (25) to choose from:



1978 MACK 300 motor w/10 spd. R.R. tri-axle with NEW 17 1/2 ft. body.



Flat bed dump trucks and dirt dumps of all sizes: 11,000 GVW to 73,250 GVW: (30) to choose from.



CO900 Fords, PS, 477 motor, AB, all wheel drive, 46,000 GVW, w or w/o utility body, other 4 wheel drives to choose from.



R-Model Macks 73-74, PS, air ride cab, 300 & 237 motors, just reconditioned (4 to choose from)



1978 LN 8000 PS, 5+2 34,000 GVW, w/new dump body, 35 single axle dump tks to choose from.



Stainless Steel tank truck from 2000 gal. to 2600 gal. Trailers from 4000 to 7200 gal.

**MORE THAN 350 TRUCKS ON LOT AT ALL TIMES**  
**USED TRUCKS OF ALL TYPES - GRAIN BODIES - REEFER - DIRT DUMPS**  
**TRUCK TRACTORS - SINGLE AXLE - DRY & REF BODIES. NEW & USED STAKE**  
**AND DIRT DUMP BODIES OF ALL SIZES - (We Buy, Sell & Trade) USED TIRES,**  
**WHEELS, OF ALL SIZES - USED TRUCK PARTS AND MOTORS - GAS AND DIESEL**

**MARTIN'S TRUCKS**

560 Lampeter Rd, Lancaster, Pa. 17602 717-392-6266, Bob Martin  
FINANCING AVAILABLE



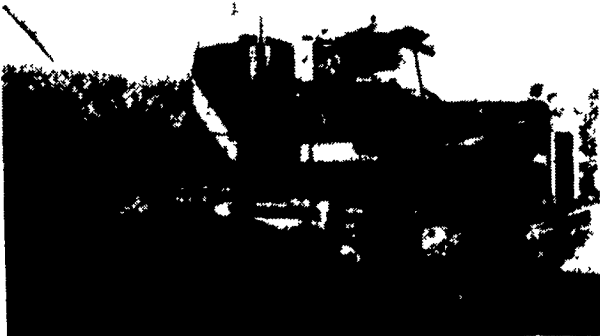
**1977 MARMON**  
Cummins 350, 15 Speed, Dual 100 Gal. Alum. Tanks, Air Slide 1/5th Wheel, 10x22 Tires, A/C, 152" w/base.  
**\$8,000**



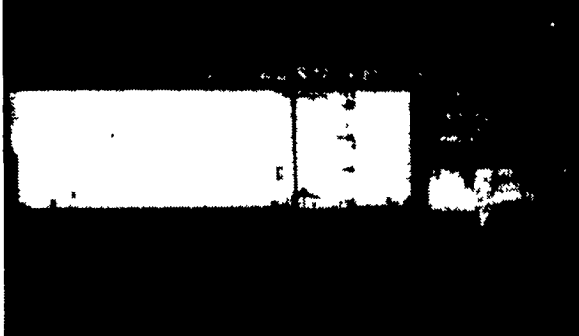
**1979 MACK**  
RWS768ST 400 Cummins, 15 Speed, Neway Air Ride, 10 Alum. Wheels, 40" Sleeper A/C, P/S, Dual 140 Alum. Tanks, W/Base 210" Hyd. Governor For P.T.O.



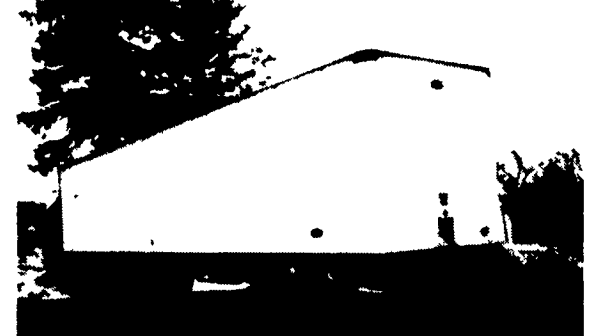
**1978 INTERNATIONAL F2250**  
Cummins 290, 10 Speed, Rt. 1110 Power Steering, Single Exhaust, 10R20 Tires W/Base 144".



**1985 MACK TRACTOR**  
RS688 LST, 350 Mack, 9 Sp.; Neway Air Ride Susp., 36" Sleeper; Deluxe Interior; Imron Paint, 230,000 Original Miles.  
**\$42,800**



**1975 INTERNATIONAL**  
Cat 3208, 5 Speed, 2 Speed Rear, Power Steering, 10x20 Tires, 22' Reefer Body w/ Side Door.  
**\$9,000**



**1986 STRICK**  
48'x102" w/Air Suspension, 24.5 Tires, L.P., Chrome Wheels  
**\$12,000**



**DUTCHMAN'S TRUCK SERVICE, INC.**

PENNSYLVANIA TURNPIKE EXIT 21, DENVER, PENNSYLVANIA 17517

PHONE 215-267-2867