

1983 neck-over livestock trailer, 20', excellent condition, electric brakes, \$2,500. 717-993-6507

1985 Chevy Suburban C-20 Diesel 4x4, Silverado, front buckets, rear seat, front/rear AC, cruise, cassette, tinted glass, trailer package, brake unit, 62,000 mi., \$11,900. 717-278-4076.

1985 Ford F150, 4x4, auto., air, cassette, XLT package, aux. fuel, 351 H.O., 100,000 miles, \$6,000. 301-833-9091

1986 Tracer 6 horse gooseneck, center load both sides, hyd. brake system, steel belted Michelin radials, excellent condition. 717-529-6531 or 717-529-6771

1988 Ford F150 Lariat, 4 WD, 302, 5 speed, air, 3,500 miles, \$10,500. Walker's. Somerset Co. (814)893-5589.

1987 Ford F250 XL super cab, 351 auto., PS, PB, air, AM-FM, dual tanks, 8,800 GVW, red & white, 11,000 miles, excellent condition, \$13,500. 717-733-2873

5,000 lb. air tire forklift, runs good. 215-538-1945

2,000 lb. electric forklift, runs good, \$1,200 215-538-1945

Lancaster Farming, Saturday, April 15, 1989-B29

28' Tribrook alum. dump trailer, 100% road ready. Raven 34' alum. dump trailer. Also 100% ready for road. (717)532-8363.

40' gooseneck tri-axle trailer, w/32' deck and 8' gooseneck, new floor and tires. \$3,600 (215)588-7587.

**ATTENTION:**

1977 GMC Astro 290 Cummings Engine w/a 1973 45 ft. drop deck van. Holds 8-10 horses, wagon & harness. The perfect set-up for anybody interested in showing. Call

**201-322-4038**

**FISHER'S TRAILER SALES**  
CUSTOM FAB PONDEROSA EL PASO  
MONARCH 4-STAR

- HORSE - 2-Horse w/tack space, feed door, T-divider \$2450
- STOCK - Bumper \$2000 and up, Gooseneck \$2800 and up
- MATS - 2 1/2 x 6 ft. \$25, 4x6 ft. \$35
- UTILITY - Available in Bumper and Gooseneck, stake pocket or rail, 8 ft. and up, prices start at \$687
- USED - (4) 2-Horse \$600 to \$1450  
King Bp 4-Horse '74 \$1200  
Custom Fab 12x6 Gn w/breast bar, T-divider 7 high '88 used a few times \$3200
- SPECIALS- 2-Horse TB Bp deluxe '88 dk red WAS \$3700 NOW \$3350  
16x7 Gn 5200# axles brn WAS \$4625 NOW \$4200  
16x7 Gn slant w/dress room, rear tack '88 dk blue WAS \$6000 NOW \$5500

(717) 242-0941  
RD #2 McVeytown, Pa. 17051

Rt 22 Strodes Mills  
Middle Rd. 1/4 mile

**TRAILERS**

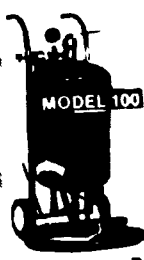


- ★ 12' Utility, Tilt Bed ..... \$799
- ★ 16' Utility w/Brakes ..... \$1,299
- ★ 16' Car Hauler w/Ramps \$1,299
- ★ 4'x8' No Frills ..... \$459
- ★ 5 & 9 Ton Equipment .....

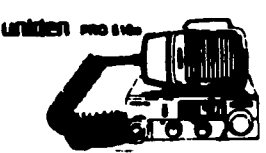
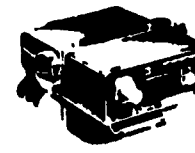
Call For More Info

**"AUTOBODY PARTS"  
"PAINTS & SUPPLIES"**

FENDERS 73-79 CHEVY & FORD PICKUP AND MANY MINI PICKUPS \$39.99 EA. WINDSHIELDS CHEVY, FORD FULL-SIZE, S-10, BRONCO II, ETC \$89.99 UP. RADIATORS & HEATER CORES POPULAR UNITS. RADS - \$79.99 UP. CORES - \$27.99



"Pressure Type"  
**SAND  
BLASTERS**  
#40 - \$155  
#70 - \$199  
#100 - \$249  
#300 - \$589  
Details in Catalog



**COBRA/WINSTLER/WINDEN  
RADAR.....\$34.95  
CR's.....\$34.95**

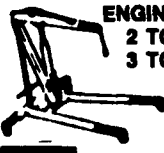
**DON'T LET THIS  
SMALL AD FOOL  
YOU!!! THE WHOLE  
SHOW IS IN OUR  
"FREE CATALOG"  
CALL or WRITE  
(717) 944-0318**



DEPARTMENT 002  
4294 EAST HARRISBURG PIKE  
MIDDLETOWN, PA 17057  
AND  
ON U.S. RT. 22 & 322  
DUNCANNON, PA

**WE SELL**

- ★ SK-Hand Tools
- ★ Skil-Power Tools
- ★ IR-Air Tools
- ★ Sand Blasters
- ★ Lots Of Large Truck Tools & More.



**ENGINE CRANE**  
2 TON.. \$299  
3 TON.. \$799



**AIR  
COMPRESSORS**  
5 HP ASME CODED  
TANKS. FROM  
\$599 To \$1,129  
7-1/2 HP 80 Gal.  
TANK, SINGLE  
PHASE MOTOR!  
**\$1,299**

ALL UNITS COME WITH MAG-STARTER MOUNTED & WIRED IF REQUIRED.

**"MUCH MORE IN CATALOG"**

Mark VII - Pickups - Broncos - Bronco II - Stake Body - Crew Cab -

**SHEEHY FORD LINCOLN MERCURY INC.**

For All Your Farming Transportation Needs Through The F800 Series

- BRONCOS DIESEL PICKUPS CHASSIS CAB CARGO VANS 4x4 RANGERS PICKUPS
- BRONCO II SUPER CAB CREW CAB STAKE BODY BOX VANS XLT CUSTOM VANS

**SHEEHY HOTLINE 717-272-7671**

Unless This Emblem Is On Your Car Or Truck You Probably Paid Too Much



9-9 Daily  
9-5 Sat.  
717-272-7671

Parts Dept. Open  
Daily 8-5  
Sat. 8-12  
717-273-8168

20th & Cumberland St. - Lebanon

**RANGER**

Financing Available From  
**2.9%**  
or up to

**\$750 CASH ASSISTANCE**

**F-SERIES TRUCKS**

150, 250, F350  
Manual Transmission  
Up To

**\$750 CASH ASSISTANCE**  
AUTOMATIC TRANSMISSION  
NOW

**\$500 CASH ASSISTANCE**

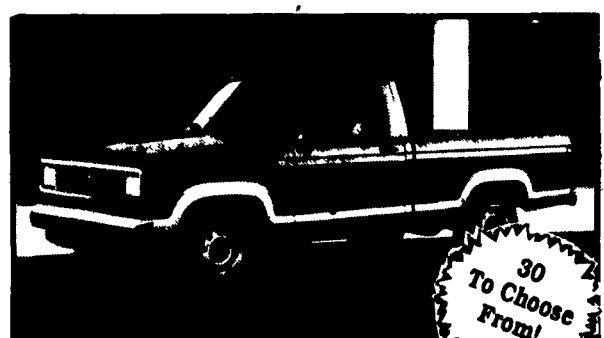
**\$400,000 INVENTORY**

OF CLEAN, USED TRUCKS!



1988 Ford F250 Truck

10 In Stock!

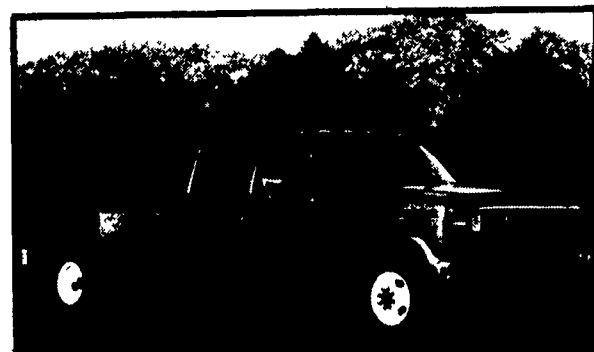


1989 Ranger

30 To Choose From!



4 WD Pickups In Stock



8 To Choose From!

Custom Vans - XLT - Grand Marquis - Marquis - Tempo -

Lynx - Topaz - Diesel Pickups - Mustang - T Bird -

Cougar - Continental - Town Car - 1x1 - Box Van - Rangers -