

**Pa. Grain**

April 10, 1989

Report supplied by PDA  
 COMPARED WITH LAST MONDAY'S MARKET FOR SOUTHEASTERN, CENTRAL AND SOUTH CENTRAL PA: CORN STEADY TO .10 LOWER; WHEAT STEADY TO .10 LOWER, INSTANCES .30 LOWER; BARLEY MOSTLY STEADY; OATS STEADY TO .20 LOWER; SOYBEANS STEADY TO .25 LOWER; EAR CORN STEADY TO WEAK.

**SOUTHEASTERN PENNSYLVANIA**

CORN NO. 2-Y RANGE 2.87-3.10, AVERAGE 2.99, \*CONTRACT FOR HARVEST 2.55-2.79; @WHEAT NO. 2 RANGE 3.75-4.06, AVERAGE 3.89, \*CONTRACT FOR HARVEST 3.45-3.67; BARLEY NO. 3 RANGE 2.40-2.70, AVERAGE 2.52, \*CONTRACT FOR HARVEST 2.00-2.15; OATS NO. 2 RANGE 2.10-2.45, AVERAGE 2.23, \*CONTRACT FOR HARVEST 1.90; SOYBEANS NO. 1 RANGE 6.70-7.40, AVERAGE 7.03, \*CONTRACT FOR HARVEST 6.72-6.86; FEW REPORTED GR. SORGHUM #2 RANGE 2.65; AVERAGE 2.65, \*CONTRACT FOR HARVEST 2.60; FEW REPORTED PER HUNDRED-WEIGHT RECLEANED BUCKWHEAT \*CONTRACT FOR HARVEST 9.15; #NEW EAR CORN RANGE 79.00-115.00; AVERAGE 94.43.

**SOUTH CENTRAL PENNSYLVANIA**

CORN NO. 2-Y RANGE 2.90-3.10, FEW REPORTED 3.20, AVERAGE 3.02; @WHEAT NO. 2 RANGE 3.40-3.95, AVERAGE 3.63; BARLEY NO. 3 RANGE 2.40-2.70, AVERAGE 2.55; OATS NO. 2 RANGE 2.25-2.60, AVERAGE 2.38; SOYBEANS NO. 1 RANGE 7.05-7.25, AVERAGE 7.15; #EAR CORN RANGE 95.00-110.00, AVERAGE 101.50.

**SOUTHEASTERN, CENTRAL & SOUTH CENTRAL SUMMARY**

CORN NO. 2-Y RANGE 2.87-3.15, AVERAGE 3.01; @WHEAT NO. 2-Y RANGE 3.50-4.06, AVERAGE 3.76; BARLEY NO. 3 RANGE 2.30-2.70,

AVERAGE 2.50; OATS NO. 2 RANGE 1.90-2.55, AVERAGE 2.22; SOYBEANS NO. 1 RANGE 6.80-7.25, AVERAGE 7.03; FEW REPORTED EAR CORN RANGE 80.00-115.00, AVERAGE 93.97.

**CENTRAL PENNSYLVANIA**  
 CORN NO. 2-Y RANGE 3.00-3.15, FEW REPORTED 2.90, AVERAGE 3.02; @WHEAT NO. 2 RANGE 3.50-4.00, AVERAGE 3.71; BARLEY NO. 3 RANGE 2.30-2.40, AVERAGE 2.39; OATS NO. 2 RANGE 1.90-2.30, AVERAGE 2.12; SOYBEANS NO. 1 RANGE 6.85-7.20, AVERAGE 6.99; FEW REPORTED GR. SORGHUM #2 RANGE 2.80; AVERAGE 2.80; #EAR CORN RANGE 80.00-86.00, FEW REPORTED 95.00, AVERAGE 86.61.

**WESTERN PENNSYLVANIA**

CORN NO. 2-Y RANGE 2.75-3.20, AVERAGE 2.99; @WHEAT NO. 2 RANGE 3.80-4.20, AVERAGE 3.95; BARLEY NO. 3 RANGE 2.25-2.45, AVERAGE 2.35; OATS NO. 2 RANGE 2.00-2.60, AVERAGE 2.41; FEW REPORTED SOYBEANS NO. 1 6.80, AVERAGE 6.80; #EAR CORN FEW REPORTED 100.00, AVERAGE 100.00.

**MONTH AGO**

CORN NO. 2-Y 3.10; @WHEAT NO. 2-Y 3.95; BARLEY NO. 3 2.54; OATS NO. 2 2.35; SOYBEANS NO. 1 7.47; NEW EAR CORN 93.10.

**YEAR AGO**

CORN NO. 2-Y 2.27; @WHEAT NO. 2-Y 2.94; BARLEY NO. 3 1.63; OATS NO. 2 1.97; SOYBEANS NO. 1 6.47; FEW REPORTED NEW EAR CORN 65.94.

**Regional Hay**

April 10, 1989  
 Eastern, Pa.

HAY & STRAW MARKET FOR EASTERN PA. (ALL HAY NO. 2 & BETTER PRICES PAID BY DEALERS AT THE FARM & PER TON.) HAY AND STRAW STEADY TO WEAK.

ALFALFA 80.00-110.00; MIXED HAY 60.00-80.00; TIMOTHY 60.00-80.00; STRAW 40.00-75.00; MULCH 25.00-40.00.

**LANCASTER CO. HAY AUCTIONS**

SUMMARY OF LANCASTER CO. HAY AUCTIONS FOR WEEK ENDING 4/7/89. PRICES PER TON: LOADS: 389 HAY, 112 STRAW, AND 34 EAR CORN. ALFALFA 80.00-146.00; MIXED HAY 64.00-127.00; TIMOTHY 80.00-110.00; STRAW 58.00-85.00; EAR CORN 105.00-120.00.

**CENTRAL PA. HAY AUCTIONS**

SUMMARY OF CENTRAL PA. HAY AUCTIONS FOR WEEK ENDING 4/7/89. PRICES PER TON: LOADS: 275 HAY, 33 STRAW & 15 EAR CORN. ALFALFA 78.00-135.00; MIXED HAY 55.00-102.50; TIMOTHY 58.00-97.50; STRAW 40.00-82.50; EAR CORN 102.50-123.00.

**Vintage Hay**

Paradise, PA

Thurs., April 13, 1989

Report Supplied by Auction

20 LOADS. ALFALFA: 66.00-117.00. MIXED HAY: 68.00-120.00. STRAW: 73.00-75.00. TIMOTHY: 88.00. GRASS HAY: 81.00.

**Belleville Hay**

Wednesday, April 12  
 Belleville, PA

Report Supplied by Auction  
 TOTAL LOADS: 60 LDS. HAY. ALFALFA: 105.00-145.00. MIXED HAY: 57.50-97.50. STRAW: 4 LOADS, 72.50-82.50. EAR CORN: 5 LOADS, 105.00-122.50.

**Good's Hay**

Leola, Pa.

Wed., April 12, 1989

Report Supplied by Auction  
 TOTAL LOADS: 101. ALFALFA: 62.00-115.00. TIMOTHY: 71.00-100.00. MIXED HAY: 64.00-136.00. STRAW: 61.00-96.00. CORN: 110.00-122.00. OATS: 2.50-2.75 BU. ORCHARD GRASS: 61.00-89.00. CLOVER: 70.00. GRASS: 40.00.

**Green Dragon Hay**

Ephrata, Pa.

Friday, April 7, 1989

Report Supplied by Auction  
 TOTAL LOADS: 170. MIXED HAY: 66.00-136.00. ALFALFA: 44.00-131.00. TIMOTHY: 76.00-110.00. CLOVER: 76.00. ORCHARD GRASS: 55.00-85.00. OATS: 2.25-3.25 BU. STRAW: 51.00-82.00. EAR CORN: 101.00-120.00.

**New Holland Hay**

New Holland, PA

Monday, April 10, 1988

Report Supplied by Auction  
 TOTAL LOADS: 227. ALFALFA: 67.00-137.00, 1 AT 205.00. MIXED HAY: 65.00-127.00, 1 AT 185.00. TIMOTHY: 77.00-100.00. ORCHARD GRASS: 83.00-90.00. STRAW: 65.00-82.00. EAR CORN: 83.00-120.00. OATS: 2.50-3.10 BU.

**HEDGING SERVICE**

through

- \* futures & options
- \* market research
- \* technical analysis

Call

**Martin Grain Co.**

717-653-1085

84 E. Main St., Mt. Joy, PA 17522

**Seeking Profits In Commodities Trading?**

- Hedging
- Speculating
- Managed Account
- Commodity Options

Call Forney Longenecker, Commodities Investment Executive, At (717) 295-8914

SHEARSON  
 LEHMAN HUTTON  
 29 E. King St.  
 Lancaster, PA 17603

SHEARSON  
 LEHMAN HUTTON  
 An American Express Company

**HERE TO STAY!  
 NEW HOLLAND SALES STABLES, INC. -  
 THE ACTION AUCTION**

**MONDAY**

SLAUGHTER HOGS



**EARLY BIRD HOG SALE**

7:30 AM  
 For Your Protection Your Hogs Must Be Identified

**10:00 AM**

HORSES MULES



**11:00 AM**

HAY  
 STRAW  
 GRAIN



**1:30 PM**

BEEF SALE  
 CALF, SHEEP,  
 GOATS



**WEDNESDAY**

**11:00 A.M.**

DAIRY COWS



**HEIFERS, BULLS**

**NEW HOLLAND SALES STABLES, Inc.**

12 Miles East of Lancaster  
 on Route 23, New Holland, Penna.

717-354-4341

Mgr. - Abe Diffenbach - 717-393-4464  
 Norman Kolb - 717-397-5538

Field Representatives  
 Alan Diffenbach 717-354-3297  
 Luke Eberly 215-267-6608 - 738-1865

**WEDNESDAY - 1:30 P.M.  
 FEEDER PIG SALE**



We endeavor to keep our barns cleaner than yours. State graded until 12 Noon

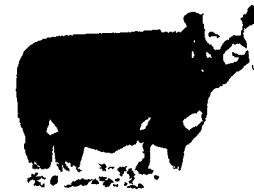
**THURSDAY**

**10:00 AM**

BULLS -

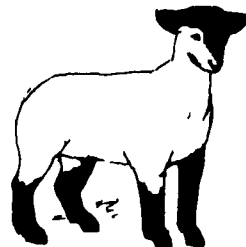


STEERS -  
 BEEF COWS



**1:30 P.M.**

CALVES



SHEEP  
 GOATS

Market your livestock thru New Holland Sales, your neighbor does  
 Pick-up your check before you leave