

Crawford Countian

(Continued from Page A1)

a sound nutrient management program by properly utilizing his liquid manure storage system. Heavy amounts of manure are applied on his corn ground, build-

ing up the phosphorus and potassium levels for the seeding of alfalfa following two years of corn.

The other producers chosen throughout the United States were David Forgey of Logansport, Ind.,

North Central Region; E. Eugene Glenn of Decatur, Ala., Southern Region; and David Barrett of Artesia, N.M., Western Region.

The award's objectives are to recognize excellence among producers in the production and utilization of alfalfa; recognize excel-

lence in the private and public sectors in promotion, research, development, and education; recognize individuals, groups, or organizations that have made special contributions to the alfalfa industry; and to promote and publicize alfalfa for its many merits in

agriculture.

Each state can submit one or more nominees for the awards.



Love Cribs

(Continued from Page A10)

operations at a congressional hearing and the state's veal protection act was killed in committee.

But we still have an up-hill battle against false information and negative public relations words that are aimed at the source of our excellent American food supply. All farmers can do is to keep up to date on the best methods to care for their animals and then let everyone who will listen know that these modern methods do consider the welfare of the animal.

And if the parent part of the farmer feels the need to respond in kind to his critics, he might want to call his calf hutch a "love crib."

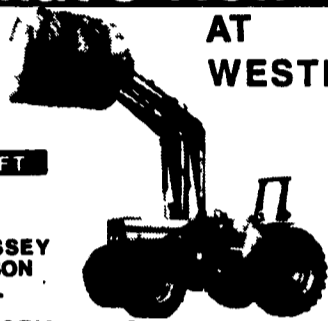
What's New

AT WESTENDORF MFG.



IDEAS THAT WORK!

HIGH LIFT TA-28



399 MASSEY FERGUSON 4 W.D.

The TRACTION ACTION features a unique patented design including power mount / dismount and quick change attachments required for your fast paced farming needs.

The NEW patented design fits the most popular up-to-date 4 w.d. tractors on the market today.

7140 CASE-MAGNUM 4 W.D.



LOW PROFILE TA-76

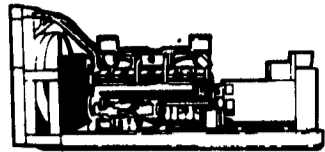
Westendorf is your Loader Specialist Since 1934.



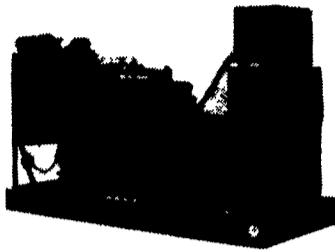
CUMMINGS & BRICKER INC



MARTIN MACHINERY



SPECIAL SALE



~~\$6,950.00~~

\$6,450.00

(While Supply Lasts)

WINCO POWER PLANTS

- 30 KW 120/240 Volts 1 Phase
- 1800 RPM
- 225 C.U. in. Chrysler Industrial Engine
- Brushless Alternator
- A.C. Meter Panel
- Engine Guages
- Automatic Start Control Panel
- Four Light Safety Shut Down
- Main Line Circuit Breaker
- Block Heater
- Enclosure Included (Suitable For Indoor or Outdoor)

P.O. BOX 35
MARTINDALE, PA 17549
215-445-4585

RT 1 BOX 166
VERSAILLES, MO 65084
314-378-5457

SYRI-CON PRECAST CONCRETE CORP.

477 E. Farmersville Rd., New Holland, PA 17557
717/355-2361

We Are Your Local Precast Concrete Manufacturer

- Hot & Cattle Slats
 - Concrete Post-Beams
 - H-J Type Bunks
 - Concrete Hog Penning
- Priced To Be Competitive



"Waffle Slats"

The only concrete slat with Your Animals Comfort In Mind

- Available in Sizes: 4' widths, up to 12' lengths 7" thick
- Hole Sizes 1½ "x4" Long, 30% open area
- Absolute comfort for all animal sizes
- Steam cured reinforced high quality concrete

Talk To Our Many Totally Or Partially Slotted Hog, Beef & Dairy Owners Before You Let Us Or Our Dealers Plan Your New Facility Or Remodel Your Present One.
Engineered "Waffle Slats" Now Made In New Holland, Pa.



STEEL FOR EVERY JOB

EQUIPMENT, SHOP, MAINTENANCE, REPAIR

HR SHEETS - CQ OR HIGH STRENGTH

GALVANIZED SHEETS - LFQ- CQ
LEVEL TO ANY LENGTH
SHEARED TO ANY SIZE

HR BARS - ANGLES - CHANNELS - BEAM
SAW CUT TO ANY LENGTH

HR PLATE - A36 OR HIGH STRENGTH

HR FLOOR PLATE - CQ
LEVEL TO ANY LENGTH
SHEARED TO ANY SIZE
BURNED TO ANY SHAPE

SQUARE AND RECTANGULAR TUBING
SAW CUT TO ANY LENGTH