

# Farm Calendar



(Continued from Page A10)

Hunterdon County 4-H Day at the Mall, Flemington Mall, Flemington, N.J., 10:00 a.m.  
 Annual Beef Ball & Parade of Bulls, New Oxford Social & Athletic Club Pavilion, New Oxford, 5:30 p.m. hors d'oeuvre; 6:30 p.m. dinner.

**Monday, April 17**

Eastern Lancaster County Adult Farmer parasite testing program, 8:00 a.m. to 10:00 p.m.; continues on April 18. Sample drop-off points are Brecknock Elementary School, Caernarvon Elementary School, Blue Ball Elementary School, Summit Valley Elementary School, Aaron Groff's Farm Store, and Aaron Shirk's Animal Health Store.

**Tuesday, April 18**

Bradford County 4-H Dairy Bowl, Troy Vet Clinic, Troy 8:00 p.m.

**Wednesday, April 19**

Pennsylvania Farmland Preservation board meeting, PDA Building, Room 202, Harris-

burg, 9:30 a.m.

Alfred State College Ag Day Celebration, Alfred State College, Alfred, N.Y., 9:00 a.m.  
 Columbia County Will, Estate Planning Workshop, Richland Mall Community Room, Richland Mall, 7:30 p.m. to 9:00 p.m.

**Thursday, April 20**

Ninth annual FARMER fundraiser dinner, Hershey Country Club, Hershey, reception at 6:00 p.m., dinner at 7:00 p.m.

**Friday, April 21**

1989 Delaware/Maryland Sheep Shearing School, Tunnel Farms, Millsboro, 9:00 a.m. to 3:30 p.m.

Penn State Dairymen's Club annual dinner meeting, Elks Club, Boalsburg, 6:30 p.m. social, 7:00 p.m. meal.

**Saturday, April 22**

Penn State Dairy Science Club Exposition, Ag Arena, University Park, 9:00 a.m.

Maryland State Jersey Sale, Jim Stonesifer Farm, Union Bridge, Md., 11:00 a.m.

## PUT YOUR FARM DOLLARS TO WORK

**Farmowners insurance package (AgriPack) with Great American Insurance Company puts it all together for you and your family.**

**Great American, an "A-Rated" company by Best's Insurance Reports, offers these protections:**

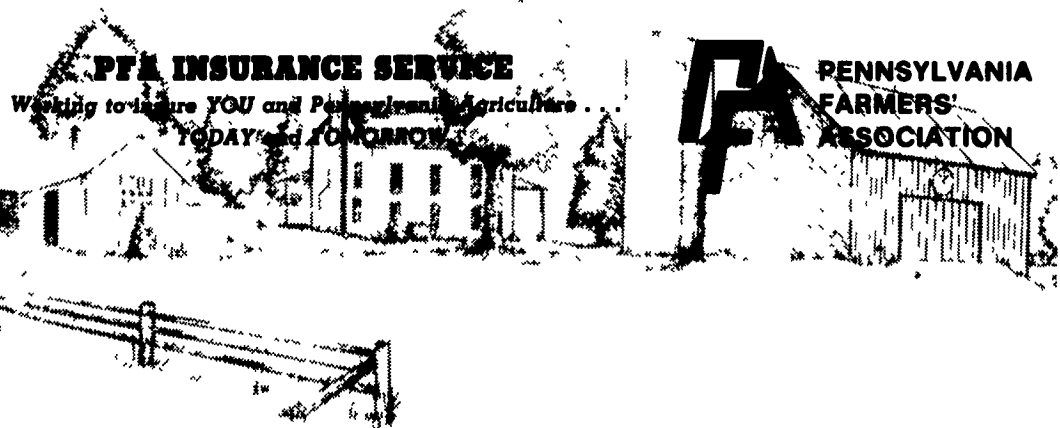
- ✓ **High liability** limits
- ✓ **Pollution** coverage
- ✓ **Optional deductibles** to save premium dollars
- ✓ **Individually designed coverages** to meet your needs
- ✓ **Premium credits** for low loss experience
- ✓ **Toll free phone** for service and claims reporting
- ✓ **On the farm service** by an agency that understands the farm business and the insurance it needs.

**Call Toll-Free for More Information**

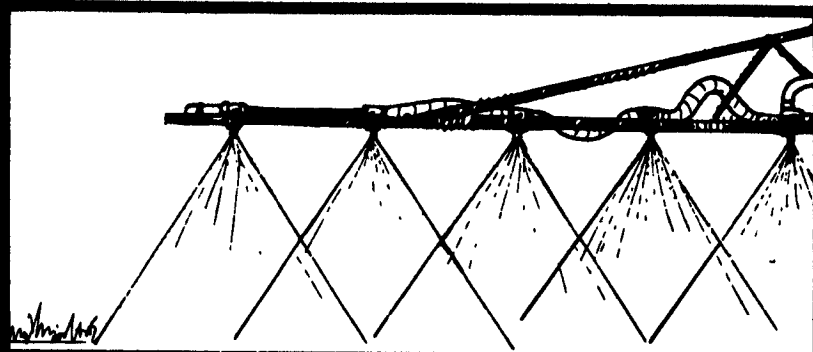
**1-800-382-1356**

**or Direct (717) 761-2740**

8 a.m. to 4:45 p.m. Monday thru Friday



# MILK AMERICA'S HEALTH KICK



## Spray weevils early with Furadan® 4F insecticide and save.

When you spray your alfalfa for weevil prior to first cutting you'll save yields and free up your time later, when you're really busy.

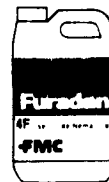
Alfalfa weevils begin feeding **prior** to first cutting. This can hurt tonnage, quality and stands. Spraying early not only prevents all this, but it means that you won't have to worry about it after first cutting—when you may not have time to spray at all.

Furadan® 4F insecticide from FMC.

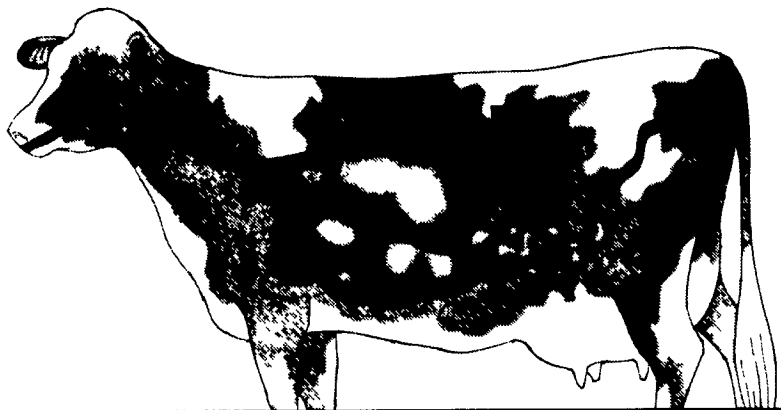
The best choice for early alfalfa weevil control Because you have more to do than worry about weevil.



Furadan is a restricted use pesticide. Read and follow label directions. Furadan and FMC are trademarks of FMC Corporation. © 1988 FMC



## Is too much of your dairy protein breaking down before it gets here?



Ask your feed supplier about SoyPLUS®. SoyPLUS can boost income over feed costs by delivering more undegradable protein to the small intestine, where nutrient absorption *really* takes place.

SoyPLUS is a richly aromatic, high-energy soybean meal that has been processed in a unique way to increase its level of undegradable (bypass) protein.

SOYPLUS BYPASSES MORE PROTEIN!	
PROCESSING METHOD	UNDEGRADABLE PROTEIN
Jet-Spoded (roasted)	25%
Solvent	35%
Extruded	35%
SoyPLUS	65%

SOURCE: Estimated percentage bypass determined by inhibitor in vitro system (Broderick, Can J Anim Sci, 64 [Suppl.] 31, 1984)

University research and many 20,000-pound herds are proving that SoyPLUS can significantly increase your return over feed costs.

**HIGH-BYPASS SOYBEAN MEAL SOYPLUS.**

Box 68, Ralston, IA 51459

**Call 712/667-3200 for more details.**