

Command Herbicide Builds Foundation For Successful Weed Control

PHILADELPHIA — Any carpenter will tell you that in order to build a sound structure you must first create a strong foundation. Without it, the entire structure is in jeopardy.

Soybean growers know that this same idea should be used in developing a weed control program. A dependable, broad-spectrum base herbicide must first be applied for the weed control program to be successful.

Since its introduction in 1986, Command® herbicide has been providing farmers with a strong foundation for controlling a wide variety of grasses and broadleaf weeds which commonly infest their soybean fields.

"Command gained a lot of respect when first introduced for its outstanding control of velvetleaf," says Command Product Manager Rick Landrum. "But now farmers are discovering that it gives them excellent grass control and better protection against other broadleaf weeds than most herbicides on the market. It is the ideal 'primary' herbicide for nearly every type of cropping system."

Applied on the surface (pre-emergence) or incorporated, Command provides season-long control on more than 40 grass and broadleaf weed species. At a rate of 1 1/2 to 2 pints per acre, Command eliminates many of the toughest weeds plaguing soybean

farmers today, such as foxtails, seedling Johnsongrass, lambsquarters, Jimsonweed, and velvetleaf.

By stopping weeds in their early growth stages, Command eliminates early season competition. Getting a head start over competing weeds is vital to the development of the young soybean plant. And unlike some herbicide treatments, Command stays in the root zone, continuing to keep fields clean all season long, right through harvest.

In many cases, when Command is applied as the base herbicide, this first line of defense becomes the only protection you need for the entire season. In some areas,

however, a tank-mix treatment may be required to solve special weed problems. For these special problems, the application flexibility of Command makes it very compatible for tank mixing at labeled rates with a wide variety of other registered herbicides, including Scepter®, Preview®, Canopy®, and Sencor®/Lexone®.

Command is set apart from other herbicides by its adaptability to perform under a diverse range of climatic conditions. Command requires only limited moisture for activation, but, it will stay in the soil even under unusually wet field conditions. This adaptability provides farmers with weed control which is both dependable and predictable, even when Mother Nature isn't.

"Unlike some other soybean herbicides, Command has no

effect on a plant's root system," notes Landrum. "Occasionally, corn may come up showing Command symptomology, but it will quickly grow out of this, leaving no permanent effect."

"In fact, Command may soon be registered for use on corn," continues Landrum, "so as long as producers follow label instructions, they don't have to worry about carryover problems."

Command is labeled for surface application on soybeans only in certain states. These states include Alabama, Arkansas, Colorado, Florida, Georgia, Kansas, Louisiana, Mississippi, Missouri, Nebraska, North Carolina, North Dakota, Oklahoma, South Carolina, South Dakota, Tennessee and Texas. Please read and follow label instructions and consult your local dealer before application and note any restrictions.

YOU'RE IN COMMAND!

Deutz-Allis Quadra-Disk planter.

When it comes to versatility, there's none better than Deutz-Allis Model 385 Quadra-Disk planter. That's because the Quadra-Disk planter features *Total Soil Flow Control* for planting accuracy regardless of soil conditions. It's the ideal planter for conventional till, ridge till, minimum till or no till. Double cropping is a natural.

Now we've added several features for 1987 to make it even more accommodating to your needs:

New plate units. A Deutz-Allis exclusive. Allows you to switch from plate to air singulation or vice versa by simply changing seed hoppers. No need to change frames or units!

New tool bar frames. Rugged 7" x 7" tool bar design provides row spacing flexibility down to 15". Also available in 4, 6, and 8 row conventional spacings of 30" to 40".

New liquid fertilizer tanks. Now you have a choice between dry or liquid. Available for all pull-type planters.

New 12-row frame. Narrow-transport design features a unique folding device to allow quick change from transport to planting to transport. Limited quantities available for 1987.

See how the Deutz-Allis Model 385 Quadra-Disk planter puts you in command like never before! Stop in today at your Deutz-Allis dealer. And check out other great features like the *Whopper Hopper* with the largest per-row capacity in the industry, unique *Peace-of-Mind* monitors and much more.



**DEUTZ
ALLIS**

See what sets us apart.

See Your Local Dealer Today!

AG-IND. EQ., INC.
Rising Sun, Md.
301-398-6132

FARMER EQUIP. &
SUPPLY INC.
Airville, Pa.
717-862-3967

LINCOLN SUPPLY
& EQUIPMENT CO.
Somerset, PA
814-443-1891
McCooles, MD
301-786-6800

PETERMAN FARM EQUIP.
Carlisle, Pa.
717-249-5338

B. EQUIP., INC.
Waynesboro, Pa.
717-762-3193

GRUMELLI
FARM SERVICE
Quarryville, Pa.
717-786-7318

MARSHALL
MACHINERY, INC.
Honesdale, Pa.
717-729-7117

SPRINGS EQUIPMENT, INC.
Springs, Pa.
814-662-2222

B.H.M. FARM EQUIP.,
INC.
Annville, Pa.
717-867-2211

HOLTRY'S EQUIPMENT
Roxbury, Pa.
717-632-7261

NICHOLS FARM EQUIP.
Bloomsburg, Pa.
717-784-7731

C.J. WONSIDLER BROS.
Quakertown, Pa.
215-536-7523
New Tripoli, Pa.
215-767-7611
Oley, Pa.
215-987-8257

STORAGE BARNS & GAZEBOS

Custom Made To Order



If You're Looking For Quality At A Good Price, Contact

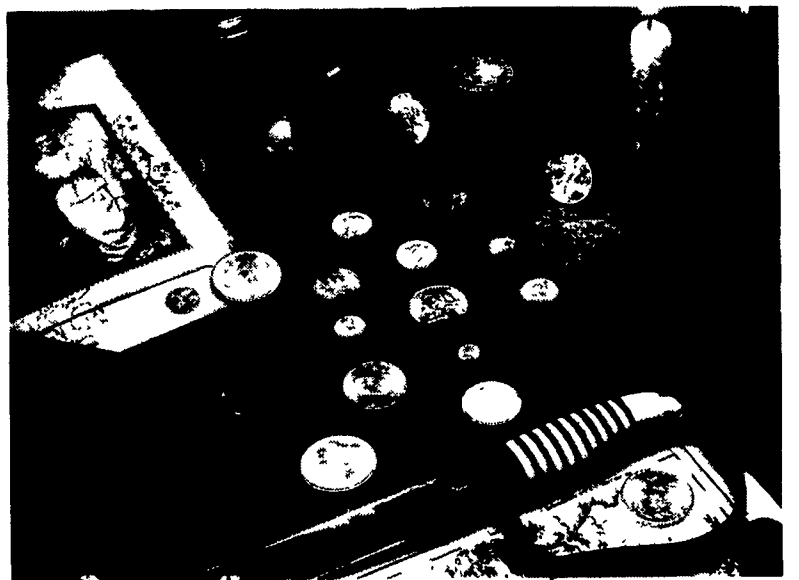
B & B STRUCTURES

DELIVERY
AVAILABLE

Henry K. Blank
RD 1, Bird-In-Hand, PA 17505

(717) 656-0783

Dealer Inquiries Invited



Is your attic worth more than your house?

Individual copper, silver and gold U.S. coins could be worth hundreds or thousands of dollars. Come in, let us appraise your old coins... a single coin or an entire collection. We'll offer you top market value and, if you wish to

sell, we'll pay you on the spot—no obligation to sell.

Central
Pennsylvania's
Largest Coin Dealer

Steinmetz
Coins & Currency, Inc.

350 Centerville Road
Lancaster, PA 717-299-1211