

Farmers = Dealers -- Your advertising pays for itself when you advertise your equipment in the farm equipment section 717-394-3047 or 717-626-1164.

Bulk limestone and fertilizer transport and unloading equipment 2 10'x6'6" tanks w/ auger unloaders powered by V-4 Wisconsin engine w/hydraulic pump mounted on 40' flatbed trailer.

Will sell as unit or separate pieces
(717) 694-3824

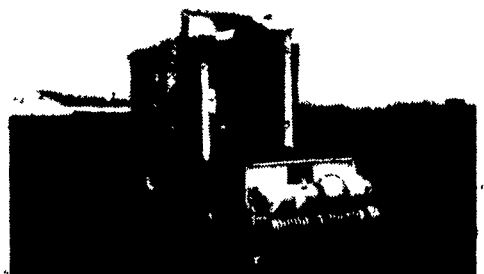
NI 800 Power Unit w/717 Combine
NH 518 Manure Spreader
(2) NI 224 Spreaders

ROY H. BUCH INC.
Ephrata
717-859-2441

Farmall BN
2 Row Cultivators with power lift and hoers, A-1 cond. Will Sell Cultivators-Hoers Separate
717-548-2811
717-464-2761

Farm & Farm Market Equipment For Sale

1984 Hill 12' produce case
1980 Gem 3 door reach-in display case
Refrigeration equipment, 7.5 HP, compressor, condensor, blower
1980 3,000 lb. Yale electric forklift
1984 Ford F-600 truck, 14' body
Heavy duty aluminum dock plate
Portable 3-level display shelves
300-20 bushel Smalley apple bins
Contact Ted Barclay
609-799-2074



1975 Field Queen Side Dump with pickup head and spare parts. New hydrostatic drive. Field ready.

Call
717-334-4056

All Steel Frame Hay Wagon, 8x18
All Sizes, Steel Hay Feeders
24' Feeder On Whls.

Self Locking Panels
J & L EQUIPMENT
St. Thomas, PA
717-369-2637

SUPPLIER'S SPEED SHOP
RD 1
Thompsonstown, Pa 17094
717/535-5684
Machine Shop
717/535-3409

Chevrolet Small Block Engine Rebuilt Kits, Rings, Rod Bearings, and Main Bearings With Full Gasket Set \$89.90
Cam Kit, Cam Lifters & Pre-lube \$89.95

Other Kits Available At Comparable Prices
Perfect Circle, M&W, TRW, and Sealed Power Tractor Industrial Kits Available
Full Engine Machine Shop Service and Rebuilding Available

ZETOR

Zetor ND9-031
4WD Forklift...\$26,500
Zetor 7711 Low Profile.....\$13,400
Zetor 3245 w/Front End Loader.....\$15,300
Zetor 321T.....\$9,000

SHEETS BROS.
1061 Carlisle St.
Hanover, Pa.
(717) 632-3660
10% Off With Ad For The Month Of March

WES STAUFFER ENGINES & EQUIPMENT
23 Pleasant Valley Rd.
Ephrata, PA 17522
(717) 738-4215

Authorized Dealer
WISCONSIN ENGINES

Onan Engines
KOHLER engines

BRIGGS & STRATTON

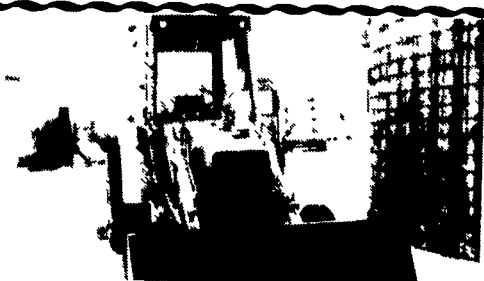
Parts Shipped Daily UPS



IH 986 Cab,
2500 Hrs., Good TA, Wts., Nice
\$11,500
(717) 532-8926

Madey Farms
Windber, PA
814-467-8839
814-467-7085

AC 7580, 4WD, w/duals, nice \$16,800
JD 7020 4WD, sharp..... \$13,000
JD 6030 w/Cab & duals, nice \$12,900
IH 856 Diesel \$5,600
MF 65, 90 Choice..... \$3,200
JD 3120 \$7,500
Case 830 dsl..... \$3,200
AC 210 diesel \$4,600

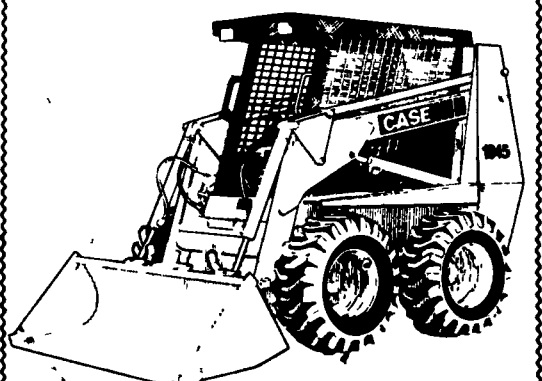


FORD LOADERS AND BACKHOES
1 - 550
3 - 555 (2 w/Extend-A-Hoe)
(717) 933-8853
(717) 933-4062

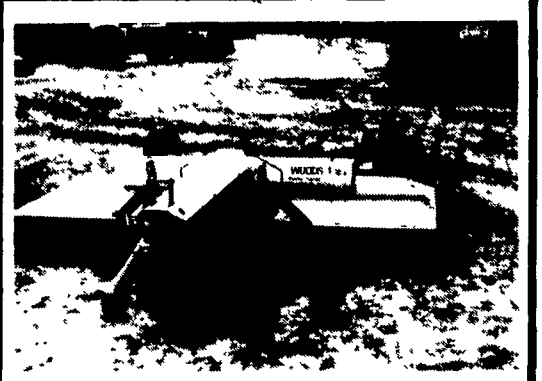
REAL GOOD USED EQUIPMENT
NH 892 Forage Harvester, electric controls, w/2R corn head\$7,500
(2) NH Crop Carrier Wagons w/tandem running gears & roofs.... \$4,500 ea.
JD 4420 Combine w/213 grain table & 443 4R corn head, 750 hours..... \$31,500
JD 2500 5-bottom plow, hyd. spring reset..... \$3,500
NH OD100 disc, 12'6" offset.....\$3,500
JD 346 wire baler.....\$3,500
71 Dodge 600 w/2 Kill Bros. 350 boxes mounted on it.....\$1,800
914-895-3995

Going Out Of Farming Selling Best Offer
Corn Planter, White, Air 5400 no-til, 4 row, coulters and teeth, dry fertilizer and excellent condition.
MF 124 Baler, Excellent condition.
57 Chevy Spray Truck, 283, 200 gal, aluminum tank, a centrifugal pump, with 7 hp Briggs engine.
Century spray booms, and dual traction tires.
4", 20' Cardinal Auger, 1/4 hp new Baldor electric motor
Call after 5 p.m.
717-648-0027

GOOD USED FARM EQUIPMENT
Pequea 7' hay tedder, PTO, new..... \$1,225
NH 411 discbine, (NEW)..... \$10,500
NH 489 haybine, (NEW) w/ hydraulic hitch \$7,700
JD 110 disc, 12', nice..... \$1,450
INT. 550 Plow, ~~SOLD~~ 16"\$575
NH 489 Haybine, low acres, nice \$4,650
NH 316 baler w/#70 thrower NEW \$9,850
CAN DELIVER...WILL TRADE
717-933-8134



Case 1845
SP gas, 1100 hours, original tires and cutting edge. Asking \$6,900.
Cumberland Co.
(717) 532-9501



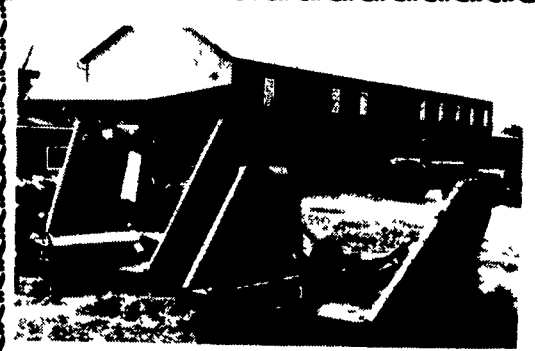
WOODS 121
New
\$3,250
301-833-9091

FMC 1 Row Corn Harvester, Excellent condition. 609-567-3566 after 6 p.m.

FORD 800, power steering and loader. 2 buckets, forks, 3 pt. hitch, 540 pto, lift boom, re-built motor, new tires, recent paint, a strong running tractor \$4,500 215-368-0639.

Farmall M for parts; Oliver 4 row corn planter. 302-239-5326

Farmall Tractor with sickle bar mower, fair shape, \$1,000. David Bradley, power take off, corn sheller, \$50. 717-284-2764.



BATWING MOWERS
New Woods 20 Ft. \$10,000
Used Woods 15 Ft. \$4,500
301-833-9091

All New Ford 1989 Models Just Arrived
345C Tractor Loader
455C Tractor Loader Backhoe Diesel
555C Tractor Loader Backhoe, 4WD w/cab
655C Tractor Loader Backhoe, 4WD w/cab
Also Available These 1989 Ford Models
1220 1920 w/38 1/2 h.p. engine
1320 2120 w/38 1/2 h.p. engine
1520 4610 w/52 h.p. engine
1720 5900 w/62 h.p. engine

STRALEY FARM SUPPLY
Dover, PA
717-292-5640



6610 Ford Tractor
850 Hour with 18.4x34 Goodyear radials. Excellent Condition
\$22,000
301-334-1205

Diesel Engines
Cummins Diesel Engines & Power Units
35-550 HP
Detroit Diesel Engines & Power Units
48-500 HP
40 HP Perkins Power Unit
92 HP 353N Detroit-Rebuilt
127 HP 453N Detroit Power Unit
120 HP 471 Detroit Power Unit
180 HP 671 Power Unit Long Shaft Clutch Used
238 HP 671N Detroit-Rebuilt
350 HP - 8V71T Detroit Used
Industrial - Agricultural - Automotive
Call Us For Your Power Needs
Diesel Engine Service
13 Pleasant Valley Rd.
Ephrata, PA 17522
717-733-3890