

LET THE SUN SHINE

The Future Looks Brighter For Lean Muscled Hogs!

'88 CARCASS DATA

Many years of carcass competition helped to keep on track of how our hogs cut. Highlights over the years include the Reserve Champion carcass at the Chicago International Livestock Show, 2 KILE Carcass Champions, Big E in Mass. Carcass Champion and several Maryland State Fair winners.

	Length	10th Rib Fat	Loin Eye
MPPA Expo R. Champ	31.2	.8	6.1
6 averaged	31.1	1.0	5.6
Carroll Co. Fair Champ	31.5	.9	5.8
NC State Fair			
6 averaged	31.6	.9	5.3
Md. State Fair Champ	30.8	.7	7.68
R. Champ	31.1	.8	6.35
Keystone Champ		.7	6.6
17 averaged		1.0	5.2

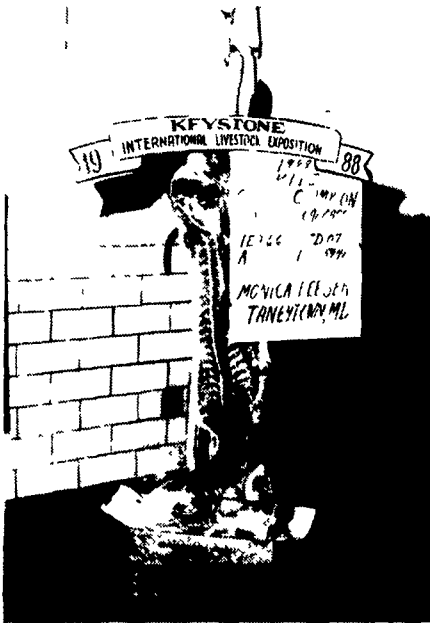
In the Spring of '88 we were honored to have Hatfield choose a load of our hogs to evaluate carcasses and test the new Fat-O-Meter System. Thank you Hatfield for your cooperation with us on our % lean comparison project in early Feb.

Since we've had the opportunity to sell several loads of hogs on the new system and pleased to be paid a premium for higher quality hogs. It's ABOUT TIME!

Call Doug Clemens at Hatfield for positive report on our carcass hogs.

BOAR TEST STATIONS

Maryland, Ohio, Delaware & New York have all tested our boars. These test stations have given our hogs a chance to show their genetic potential. Many winners and excellent records have been generated over the years. Our hogs have been right at the top of many tests including the '86 Ohio Test where our pen of Yorkshires average index was over 50% better than the whole group average.



'88 Kile Champion

ON FARM TESTING

Since 1971 we have offered individual performance data on our boars giving growth rate, average backfat and loineye. In the late 70's we've added % lean and an index. Dr. Ed Young from the University of Maryland does our scan work. An index of 180 is average.

50 Boars currently for sale:

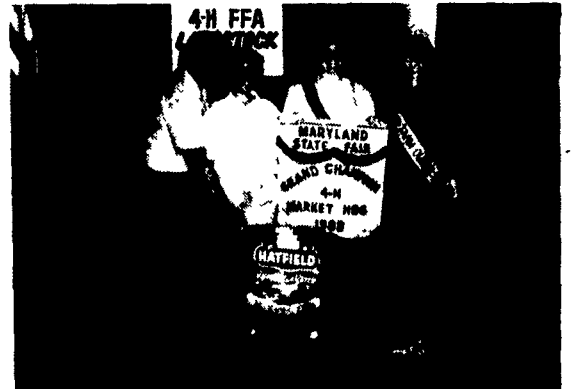
Raised in groups of 15-25 on solid concrete
Delivery Available

	Days/	Ave.	Loin	%	
	230	Backfat	Depth	Lean	Index
22-3 Hamp	165	.64	5.2	64.0	198
23-4 Hamp	168	.70	5.6	63.3	192
24-9 Hamp	168	.63	5.5	64.6	199
98-6 Blackline	161	.67	5.3	62.4	194
108-11 Blackline	163	.73	5.5	62.1	190
108-14 Blackline	160	.68	5.1	63.1	198
108-16 Blackline	163	.70	5.1	62.1	190
111-4 Blackline	149	.68	4.6	62.6	207
111-5 Blackline	158	.68	6.1	62.7	199
111-6 Blackline	163	.71	4.5	63.5	198
114-5 Blackline	156	.75	6.0	62.4	198
114-9 Blackline	161	.75	5.1	62.8	196
20-8 York	157	.63	5.3	53.3	203
23-7 York	159	.68	5.0	62.6	197
24-6 York	160	.64	5.9	63.9	204
24-7 York	167	.68	5.5	63.4	194
26-6 York	159	.68	5.2	63.0	199
29-2 York	159	.78	4.8	62.6	196
31-8 York	165	.73	4.8	63.0	193
34-9 York	152	.76	4.9	62.8	199

Sow productivity is measured by number farrowed, and weaned and 21 day weight. Individual sow & litter performance records are made available. All litters are weighed. Open gilts available on order.



'88 PA Farm Show



MD State Fair



Keystone Res. Grand



ENLS



Virginia State Fair



North Carolina State Fair

'88 MARKET HOG SHOW RESULTS

Pa Farm Show Res. Champ
Staunton, Va. 4-H Show Champ
MPPA Pork Expo Champ Trio Feeder Pigs
Champ & R.C. Ind.
Feeder Pigs
Champ Jr. Market Hog
R.C. Production Carcass
Carroll Co. Md. 4-H Champ Ind & Champ Pair
Howard Co. Md. 4-H Champ Ind.
Fredericksburg Va 4-H R. Champ

Maryland State Fair Jr. Champ
Champ & R.C. Production Barrow
ENLS Jr. Champ
Va. State Fair R.C. Open
Champ & R.C. Jr.
Keystone Champ Hamp
R.C. Crossbred
R. Grand Champ
Champion Carcass
N.C. State Fair Champion

HOW DO YOU MAKE PROGRESS WITHOUT RECORDS?

We Offer:

- Slaughter check info.
- Vaccination program
- Parasite control
- Individual boar data
- Individual sow performance
- Carcass data
- Sound guarantee & customer relations

Does your current seedstock supplier provide the info that can make a difference between success or failure?

FRANK FEESER

Box 372
Taneytown, MD 21787
301-751-1287

"We guarantee what we sell"



CLUB PIG & LAMB SALE
MAY 6, 1989
6:30 p.m.
Located at our Farm Sale Barn

Guest Consigner
Randall Udlike
Washington, Va.

75 Select Club Pigs
Hampshire Yorks
Duroc Crosses
A few select registered Gilts

20 Select Club Lambs
Suffolk
Suffolk Crosses
1988 Va. State Fair Champion
Market Lamb & County Winners

Slaughter Checks - Dr. Tim Trayer
1-800-222-4084 215-267-3510
Reg. Herd Health -
Dr. William Carr 301-447-6237
PRV & Bruc. Free