

**National Grain Market**

St. Joseph, MO  
April 5, 1989

WHEAT PRICES MIXED WEDNESDAY. LACK OF EXPORT ORDERS AND WEATHER CONDITIONS IN HARD RED WINTER WHEAT AREAS OFFSETTING FACTORS. CORN HIGHER AS VERY GOOD EXPORT ORDERS PAST WEEK IMPROVED DEMAND TO MORE THAN OFFSET GOOD MOISTURE CONDITIONS OVER MOST CORN PRODUCING AREAS FOR NEW CROP SUPPLY SIDE. BEANS UNABLE TO COME UP WITH OUTSIDE BUYERS AFTER SHARP PRICE BREAKS THE PAST TWO MONTHS.

EXPORT NEWS: ECUADOR IS TENDERING FOR 101,400 TONNES OF U.S. HARD RED WINTER WHEAT WITH GSM FINANCING FOR EQUAL SHIPMENTS IN APRIL, MAY AND JUNE. U.S.S.R. BOUGHT 200,000 METRIC TONS OF CORN FOR 88/89 MARKETING YEAR. SOUTH KOREA'S FEEDERS ASSOCIATION BOUGHT 100,000 TONNES OF U.S. NO. 3 YELLOW CORN FOR MAY/JULY SHIPMENT. TAIWAN BOUGHT 54,000 TONNES OF U.S. NO. 2 YELLOW SOYBEANS FOR SHIPMENT IN APRIL. IRAQ BOUGHT ABOUT 75,000 TONNES OF U.S. OYMEAL UNDER GSM-102 FINANCING FOR JLY/DEC SHIPMENT. ALGERIA BOUGHT 12,000 TONNES OF U.S. SUNOIL FOR APR/MAY/JUN SHIPMENT. EGYPT TENDERS TODAY FOR UP TO 30,000 TONNES OF OPTIONAL-ORIGIN SUNSEED OR COTTONSEED OIL FOR APRIL SHIPMENT.

DATE CHANGE YEAR AGO  
04/05/89 04/04/89 04/06/88 WHEAT:

KANSAS CITY 4.35-4.38 NC 3.05-3.08  
MINNEAPOLIS 4.45 1/4-4.49 1/4 UP 1  
1/2 3.15 PORTLAND 4.58-4.64 NC-UP 2  
3.23-3.27 ST. LOUIS 4.09-4.14 UP 3-4  
3.02-3.06

CORN, U.S. NO. 2 YELLOW: KANSAS CITY 2.54-2.58 UP 2 2.00-2.03 MINNEAPOLIS 2.59 UP 3 1.93 1/2 SO. IOWA 2.64-2.67 UP 2-3 1.98-2.03 1/2 OMAHA 2.44-2.45 UP 3-2 1.84-1.87

SOYBEANS, NO. 1 YELLOW: KANSAS CITY 7.11-7.17 NC-UP 1 6.42-6.49 MINNEAPOLIS 7.07 UP 1/4 6.45 1/4 SO. IOWA 7.08-7.13 DN 2 6.51-6.57 C. ILL. PROCESSORS 7.19-7.22 NC-UP 2 6.60 1/2-6.69 1/2

KANSAS CITY, US NO. 1 HARD RED WINTER WHEAT, ORDINARY PROTEIN. MINNEAPOLIS, US NO. 1 DARK NORTHERN SPRING WHEAT, 14% PROTEIN. PORTLAND, NO. 2 SOFT WHITE WHEAT, ST. LOUIS, NO. 2 SOFT RED WINTER WHEAT.

FUTURES CLOSE: KANSAS CITY (MAY) WHEAT 4.23 UP 1/4 3.08 MINNEAPOLIS (MAY) WHEAT 4.19 1/4 UP 1 1/4 2.98 CHICAGO (MAY) WHEAT 4.04 1/4 UP 3 3.09 1/4 (MAY) CORN 2.64 UP 2 2.07 1/2 (MAY) SOYBEANS 7.15 UP 1/4 6.67 1/4

EXPORT: BARGE OR RAIL, PORT OF NEW ORLEANS OR NORTH TEXAS GULF. NO. 1 HARD RED WINTER WHEAT ORDINARY PROTEIN 4.77-4.79 DN 2-NC 3.41 NO. 2 SOFT RED WINTER WHEAT 4.33-4.34 UP 2 3.29-3.31 NO.2 YELLOW CORN 2.88 UP 2 2.26-2.28 NO.2 YELLOW SORGHUM RAIL 4.80 UP 5 BARGE 4.79 UP 8 3.73-3.84 NO.2 YELLOW SOYBEANS 7.36-7.42 DN 4-NC 6.84-6.87.

**Good's Hay**

Leola, Pa.  
Wed., April 5, 1989

Report Supplied by Auction  
TOTAL LOADS: 171.  
ALFALFA: 61.00-131.00.  
TIMOTHY: 64.00-100.00.  
MIXED HAY: 65.00-122.00.  
STRAW: 61.00-75.00.  
CORN: 101.00-115.00.  
OATS: 2.50-3.40 BU.  
CLOVER: 64.00-90.00.  
MEADOW GRASS: 57.00-79.00.  
ORCHARD GRASS: 75.00-95.00.  
STUBBLE HAY: 80.00.  
NEW SEEDLINGS: 1 LOAD, 88.00

**Frederick Co. Hay**

Buckeystown, Md.  
Thursday, April 6, 1989

Report Supplied by Auction  
48 LOADS. MARKET LOWER ON HAY; STRONGER ON STRAW.  
ALFALFA: 6 LOADS FAIR TO GOOD, 85.00-117.00; 1 FANCY, 150.00, 4 FAIR, SOME DAMAGED, 64.00-72.00.  
TIMOTHY: 9 FAIR TO GOOD, 70.00-92.00; 1 FANCY, 125.00; 10 FAIR, SOME DAMAGED, 58.00-66.00; 2 BIG ROUND BALES, 30.00-67.00.  
MIXED HAY: 3 FAIR, 55.00-60.00.  
ORCHARD GRASS: 2 GOOD, 60.00 AND 68.00.  
BROME GRASS: 1 GOOD, 63.00.  
STRAW: 8 FAIR TO BRIGHT, 58.00-87.00; 1 LOAD DARD AND WET, 20.00.

**Westminster Hay**

Westminster, Md.  
Tuesday, April 4, 1989

Report Supplied by Auction  
TOTAL LOADS: 62.  
ALFALFA: VERY GOOD 96 00-130.00; GOOD 65.00-86.00, 1 40-2.40 BALE.  
ALFALFA MIX: 51.00-142.00  
TIMOTHY: 50.00-95.00; ROUND BALES 550 LBS. 18.00 EACH  
TIMOTHY MIX: 57 00-82.00, .95 BALE.  
ORCHARD GRASS. 57 00-59.00, 95-1 20 BALE  
MULCH HAY: 48.00, 50 BALE  
STRAW: 52.00-57.50, 95 BALE  
OATS 2 90 BU

**North Jersey Market**

Hackettstown, N.J.  
Tues., April 4, 1989

Hay—Straw & Grain Report  
ALFALFA HAY, 2 LOADS, 1.60-2.50 BALE.  
MIXED HAY: 4 LOADS, 1.20-2.10 BALE.  
GRASS HAY: 3 LOADS, 1.10-1.90 BALE.  
WHEAT STRAW: 1 LOAD, .75 BALE.  
BARLEY STRAW: 1 LOAD, 1.30 BALE.  
TOTAL: 11 LOADS.

**Keister's Hay**

Middleburg, PA  
Tuesday, April 4

Report supplied by auction  
67 LDS. HAY.  
ALFALFA: 80.00-120.00  
MIXED HAY: 47 50-110.00  
TIMOTHY: 75 00-97 50  
STRAW: 9 LOADS, 65.00-82.50  
EAR CORN 10 LOADS AT 92 50-112 50.  
OATS 2 LOADS, 2.80 AND 2 90 BU

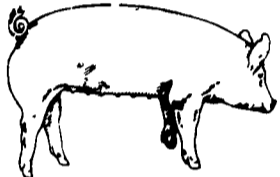
**Clouser Farm Enterprises Feed Auction**

Penn's Cave Grounds  
Centre Hall, PA  
Thursday, March 30, 1989 Noon  
ALFALFA HAY: 2 LOADS, 107.50 AND 160.00.  
STRAW: 1 LOAD, 70.00.  
NOTE: FEED SALES HELD EVERY THURSDAY NOON.

**Belleville Hay**

Wednesday, April 5  
Belleville, PA

Report Supplied by Auction  
TOTAL LOADS: 68 LDS. HAY.  
ALFALFA: 90.00-130.00.  
MIXED HAY: 65.00-95.00.  
STRAW: 8 LOADS, 52.50-70.00.  
EAR CORN 2 LOADS, 107 50-122 50.



**EMERY'S BUYING STATION**

OPEN TO RECEIVE YOUR MARKET HOGS

AT THE GREEN DRAGON MARKET.  
RD 4, EPHRATA, PA 17522  
1 MILE NORTH OF EPHRATA ON NORTH STATE STREET.

HOURS: MONDAY, TUESDAY, and WEDNESDAY 7:00 A.M. to 11:30 A.M.

215-458-5677 Residence  
717-733-9648 Office

YOU ARE PAID FOR YOUR HOGS IMMEDIATELY

Ken & Lois Emery, Proprietors

**ATTENTION FARMERS**

The New Way To Market Your Livestock  
HATFIELD AND MOYER  
PACKING CO. AND PACKING CO.  
Will Receive Hogs Will Receive Cattle

At The  
BLAIR-BEDFORD  
BUYING STATION  
RD 1 Martinsburg, Pa

MONDAYS - Hogs 7:30 AM to 12 Noon  
Cattle & Calves 7:30 AM to 4 PM  
THURSDAYS - Cattle & Calves  
7:30 AM to 4 PM

- No commission or yardage fees deducted from check
- Livestock weighed and paid for immediately
- You may call our office sale day for prices

DALE R. HOOVER - Owner  
Business 814-793-3077  
Residence 814-793-2657

**GRAIN & LIVESTOCK HEDGING SERVICES WITH**



Jim Rohrbaugh, Account Executive  
E.F. Hutton & Company Inc.  
P.O. Box 3151, Harrisburg, PA 17105  
(717) 763-1611  
(800) 822-9553 In-state  
(800) 334-3119 Out-of-state

**Heritage Computer Solutions**

Division of Heritage PMS Inc.  
Pacesetters in Agri-Business  
Computer Technology  
458-B Valley Glen Rd.,  
R.D. 3, Annville, PA 17003

Authors of Layer Performance 2.0  
- the layer management computer program

Give us a call at  
717-838-1685 or  
717-397-1998



SOMETHING TO CROW ABOUT...

LOW CLASSIFIED RATES WITH EXCELLENT RESULTS!

**Special Notice! VINTAGE SALE STABLE INC.**

Rt. 30 10 ml. east of Lanc. in Paradise, PA  
HAY, STRAW AND GRAIN SALE  
Every Thursday at 1 p.m.  
For Infor.  
717-442-4818  
Bus. Phone  
215-458-8518  
Home Phone  
L. Robert Frame Sr., President  
Glen S. Frame, Manager

FRIDAY, MAY 5 - 1:00 PM ON THE FARM MONTHLY

**BRED GILT SALE**

Sale To Start Promptly Every 4 Weeks  
Located 4 miles east of former location, 1 mile off 472 midway between Quarryville & Oxford, PA, 1 mile south of Kirkwood, turn west off 472 at Union Church (Street Rd.) 1 mile to crossroad turn left, 2nd farm on right. Hill Road. Watch for sale signs.

Validated Brucellosis Free Herd #169  
Qualified Pseudorabies Free Herd #55  
50 to 60 Head

We have White Diamond F2's crossbred to Chester White & some 3-way cross - York, Landrace & Duroc.

Vaccinated for Lepto, Erysipias, Rhinitis, E'Coll, Pasteueralla

Hand mated with Breeding Dates  
Local Truck Available  
No Hogs Sold On Commission

JOHN B. STOLTZFUS  
R.D. 1, Kirkwood, Pa.

Abe Diffenbach, Auctioneer AU225L  
NEXT SALE FRI., JUNE 2, 1:00 P.M.

**LANCASTER STOCKYARDS**



By Buyer's Request:

Starting Wed., April 5, & Every Wed. Thereafter  
The LANCASTER STOCKYARDS Will Conduct Load Lot Sales Of 10 Or More Cattle.

Cattle Will Be Sold In Order Of Arrival.

All Consignments Are Requested To Be In By 9 AM  
Cows Will Be Sold Immediately following steer sale.

Contact Your Commission Agent For Particulars!

LANCASTER STOCKYARDS, INC.  
717-394-2611

**OUR BUSINESS IS SERVICE TO FARMERS**

Let us help you build a successful marketing program!

Call:  
717-761-2740  
800-382-1356



**Grains & Livestock**

• Forward Contracting • Hedging Services

**CFS** PFA COMMODITY FUTURES SERVICE, INC.