

Minimum-Till Rotary Hoes Introduced By Case IH

RACINE, WI — To make minimum tillage farming both easier and more efficient, Case IH introduces the Model 181 MT minimum-till rotary hoe in eight different working sizes.

The Model 181 MT is designed to significantly reduce plugging in minimum tillage situations and still provide effective weeding, crust breaking and surface tillage. It performs equally well in conventionally tilled fields, giving farmers increased versatility.

To create greater fore and aft clearance, Case IH has engineered the Model 181 MT with two staggered hoe ranks that allow for significantly better trash flow than conventional rotary hoes. Each hoe wheel is mounted on its own spring-loaded arm that follows changes in ground contours to further reduce plugging.

Additionally, independent oscillating action allows the wheels to ride up and over obstructions without damaging teeth or affecting other hoe wheels. This increased flexibility lets the Model 181 MT achieve uniform penetration over beds, furrows and uneven contours.

Another engineering breakthrough unique to the Model 181 MT is the patented design of its self-cleaning arm pivots. Three grooves in the hub and a hole in

the bottom of each hub keep the arms from binding by allowing dirt to escape. Wide-spaced wheel hub mountings prevent soil and trash from building up between the wheels and arms.

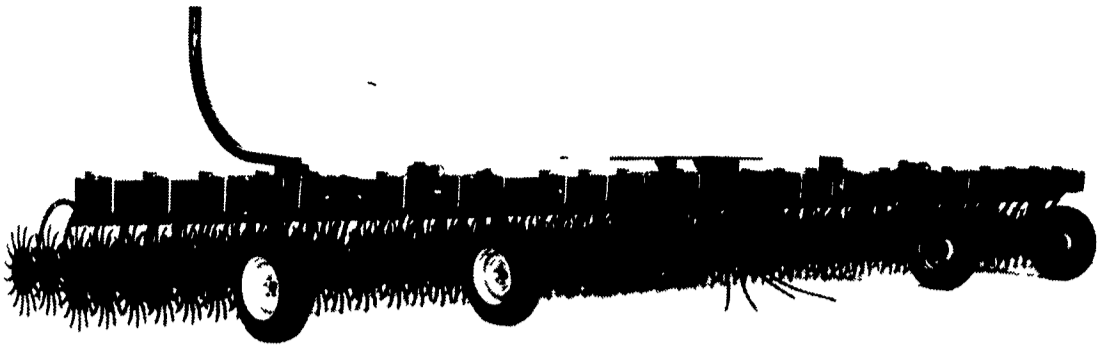
The Model 181 MT features 21-inch diameter steel wheels fitted with sealed ball bearings. Each wheel has 16 hardened, self-sharpening, spoon-billed teeth.

The rotary hoe's eight folding and rigid working sizes range from 15 to 41 feet. Folding models have flat-folding hydraulic wings for easier shed storage and trouble-free road travel.

Wings can be folded independently for working point rows. In the working position, they can either be locked rigid or allowed a moderate amount of flex. The hydraulic cylinders tuck out of the way inside the main frame tube to prevent soil and trash accumulation.

Additional features of the Model 181 MT include:

- standard three-point hitch;
- tubular main frame;
- rock shield;



The Case IH rotary hoe significantly reduces plugging in minimum-till situations while providing effective weeding, crust breaking, and surface tillage. Available in eight different working sizes, the hoe performs equally well in conventionally tilled fields.

- rear storage stand for folding models;
 - optional endwise transport for rigid models; and
 - optional Quick Attach hitch adapter package.
- Headquartered in Racine, Wis-

consin, Case IH is a worldwide manufacturer and marketer of Case IH agricultural and Case construction equipment. Case IH is an affiliate of Tenneco Inc., Houston.

Tenneco Inc. is a diversified

industrial corporation with major business interests in natural gas pipelines, agricultural and construction equipment, shipbuilding, automotive parts, packaging, chemicals, and minerals.

HENRY K. FISHER INC. Sandblasting & Spray Painting

Aerial Ladder Equipment
Farm Buildings — Feed Mills
Commercial - Industrial
Repointing — Interior/Exterior

667 Hartman Station Road
Lancaster, PA 17601
717-393-6530

HAY, STRAW,
EAR CORN,
PEANUT HULLS

At farm or delivered in any quantity as you require.

Ebenshade Turkey Farm

(America's Oldest)
Paradise, Pa.
(717) 687-7631

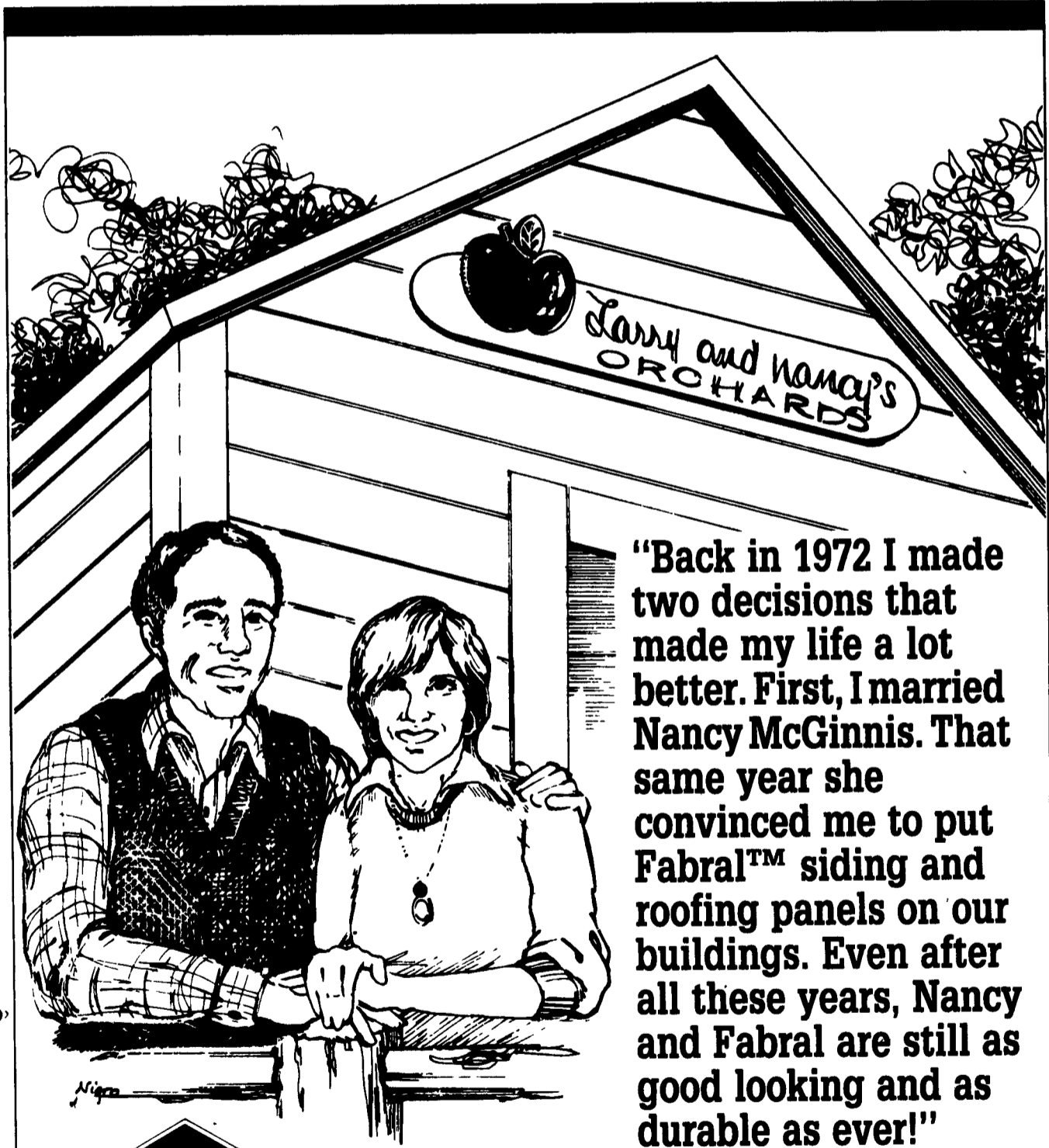
1989 BARN PAINTING Latest Developments

1. **PREPARATION** - High volume water blasting at 1,000 lb. pressure re-surfaces barn siding into a smooth (like new) appearance!
 - a Performed by professionals quickly at reasonable cost
 - b By yourself with your own or rented equipment.
 - c. Or other more conventional methods.
2. **APPLICATION** - To insure better adherence to this super prepared surface, use the best fine bristle brush in four directions to evenly distribute the recommended rail thickness of seal coat coverage.
3. **SPECIALIZATION** - Every barn is different but generally it's best to use a high quality mildew resistant product, specially formulated to meet the requirements of this partially weathered wood that was and will be weather stressed.

Aerial & Latest Equip.
Estimates Evaluations
PHARES S. HURST
RD 1 - Box 503
Narvon, PA 17555
215-445-6186



BRUNING PAINT



"Back in 1972 I made two decisions that made my life a lot better. First, I married Nancy McGinnis. That same year she convinced me to put Fabral™ siding and roofing panels on our buildings. Even after all these years, Nancy and Fabral are still as good looking and as durable as ever!"

If you're looking for siding and roofing that will last, then you want Fabral. Behind its good looks is a carefully engineered system that gives remarkable durability and design flexibility.

To find out more, just call us at our toll free number.



Corrosion Resistant Materials Company

P.O. Box 848 Farmingdale, NJ 07727
Toll free: 1-800-322-CRMC
For Fast Service Phone: 201-938-5500

*Fabral is a trademark of Alcan Aluminum Corporation