

Central U.S.

Carlot

Beef Report

Wed., Mar. 29, 1989

Report supplied by USDA

CENTRAL U.S. CARLOT BEEF REPORT (INCLUDES THE MAJOR PRODUCTION AREAS IN THE MIDWEST, TEXAS AND OKLAHOMA) AS OF 3:00 P.M.

COMPARED TO TUESDAY'S 3:00 P.M. REPORT, CHOICE STEER AND HEIFER CARCASSES MOSTLY STEADY EXCEPT CHOICE 4 WEAK TO \$2.00 LOWER; SELECT \$1.00 HIGHER. DEMAND LIGHT TO MODERATE, MOVEMENT MODERATE ON MODERATE SUPPLIES AND OFFERINGS.

15 LOADS OF STEER CARCASSES AND 19 LOADS OF HEIFER CARCASSES TRADED TO PACKER-PROCESSORS.

SALES REPORTED ON 38 LOADS OF STEER AND HEIFER CARCASSES.

**STEER CARCASSES:
(15 LOADS REPORTED)
FOB OMAHA BASIS
CHOICE 3**

600-900# 5 LDS. RANGE 111.00-113.00, LATEST ESTB. MKT. 113.00.

CHOICE 4

600-900# 3 LDS. RANGE 101.00-103.00, LATEST ESTB. MKT. 101.00-103.00.

600-900# 7 LDS. 108.00-109.00, LATEST ESTB. MKT. 109.00.

**HOLSTEIN-TYPE
CHOICE 1-3**

600-900# LATEST ESTB. MKT. 105.50 A.

600-900# LATEST ESTB. MKT. 101.50 A.

**HEIFER CARCASSES
(23 LOADS REPORTED)
FOB OMAHA BASIS
CHOICE 3**

550-800# 11 LDS. RANGE 111.00-113.00, LATEST ESTB. MKT. 113.00.

500-550# 1 LD. RANGE 105.00, LATEST ESTB. MKT. 105.00.

400-500# 1 LD. RANGE 104.00, LATEST ESTB. MKT. 104.00.

CHOICE 4

500-800# 3 LDS. RANGE 101.00-103.00, LATEST ESTB. MKT. 101.00-103.00.

SELECT 1-3

550-800# 7 LDS. RANGE 108.00-109.00, LATEST ESTB. MKT. 109.00.

400-550# LATEST ESTB. MKT. 93.00 B.

**STEER CARCASSES
FOB AMARILLO BASIS
(0 LOADS REPORTED)
CHOICE 4**

600-900# LATEST ESTB. MKT. UNQ.

**HEIFER CARCASSES
FOB AMARILLO BASIS
(0 LOADS REPORTED)
CHOICE 4**

500-800# LATEST ESTB. MKT. UNQ.

**STEER AND HEIFER
PRIMAL CUTS
(0 LOADS REPORTED)
CHOICE 3**

600-900# LATEST ESTB. MKT. UNQ.

**HEIFER HINDS
120-165# LATEST ESTB. MKT.
124.00 A.**

**FRONT QUARTERS
135-210# LATEST ESTB. MKT.
104.00 A.**

**COW AND BULL
CARCASSES**

(22 LOADS REPORTED)

COW AND BULL CARCASS FIRM. DEMAND AND MOVEMENT MODERATE ON LIGHT TO MODERATE SUPPLIES AND OFFERINGS.

UT, BRK 2-4

450&UP FOB OMAHA 77.00-78.00 A, FOB E. TX & OK UNQ.

UT, BNG. 1-3

400&UP FOB OMAHA 4 LDS. 82.00-83.00, FOB E. TX & OK UNQ.

CUTTER 1-2

350 & UP FOB OMAHA 17 LDS. 93.00, FOB E. TX & OK UNQ.

BULLS 500/UP

YG 1 FOB OMAHA 1 LD. 104.00, FOB E. TX & OK UNQ.

YG 1-3 FOB OMAHA UNQ., FOB E. TX & OK UNQ.

**BONELESS PROCESSING
BEEF/BEEF TRIMMINGS
(132 LOADS REPORTED)
FOB OMAHA BASIS**

90% FRESH FOB OMAHA 9 LDS. 125.00, FOB E. TX & OK 18 LDS. 124.50-125.00.

90% FROZEN FOB OMAHA 2 LDS. 125.00, FOB E. TX & OK 3 LDS. 124.50-125.00.

85% FRESH FOB OMAHA 1 LD. 113.50, FOB E. TX & OK 2 LDS. 113.50-114.00.

85% FROZEN FOB OMAHA UNQ., FOB E. TX & OK UNQ.

75% FRESH FOB OMAHA 2 LDS. 95.00, FOB E. TX & OK UNQ.

75% FROZEN FOB OMAHA UNQ., FOB E. TX & OK 2 LDS. 93.50-94.00.

65% FRESH FOB OMAHA 72.00-72.50 A, FOB E. TX & OK UNQ.

65% FROZEN FOB OMAHA UNQ., FOB E. TX & OK UNQ.

50% FRESH FOB OMAHA 92 LDS.

51.50-54.00, M 52.00-53.00.

50% FROZEN FOB OMAHA 1 LD. 52.00.

50% BOXED FOB OMAHA UNQ. BULL 92-94 FOB OMAHA UNQ, FOB EX. TX & OK 141.00 A.

ABCDE AFTER QUOTES REPRESENTS DAYS SINCE LAST ACTUAL MARKET TEST. QUOTES ARE DROPPED AFTER 5 DAYS OF NO TEST OR BEFORE IF THEY NO LONGER REFLECT CURRENT MARKET CONDITIONS.

**Oklahoma City Feeder
Cattle Weekly**

Wednesday, March 29, 1989

WEEKLY CATTLE SUMMARY: COMPARED WITH LAST WEEK'S CLOSE--FEEDER STEERS UNDER 700 LB. AND HEIFERS UNDER 500 LB. \$2.00-\$3.00 HIGHER; HEAVIER WEIGHTS STEADY TO \$1.00 HIGHER. STOCKER DEMAND GOOD. ACTIVE TRADE ON BOTH THIN CALVES AND YEARLINGS FOR GRAZING PURPOSES. THUNDERSTORMS BROUGHT GOOD RAINS TO OKLAHOMA THIS WEEK. FEEDLOT TYPE CATTLE SOLD TO FAIR DEMAND. NUMBERS COMING OFF WHEAT PASTURES REDUCED CONSIDERABLY THIS WEEK, YEARLING FEEDERS CONTINUE TO FORM BULK PERCENTAGE. SLAUGHTER COWS \$2.00-\$3.00 HIGHER. SLAUGHTER BULLS \$1.00 HIGHER. DEMAND VERY GOOD FOR LIGHT SUPPLY OF SLAUGHTER CATTLE. RECEIPTS THIS WEEK 10,700; LAST WEEK 18,442; LAST YEAR 9,282. SUPPLY CONSISTED OF 80% YEARLING FEEDER STEERS AND HEIFERS; 16% STEER AND HEIFER CALVES; 4% COWS AND BULLS. BULK PRICE LEVELS FOLLOW:
FEEDER STEERS: MEDIUM &

LARGE FRAME 1, 300-450 LB. \$110.00-\$115.75; 450-500 LB. \$100.00-\$108.00; 500-550 LB. \$95.00-\$102.50; 550-600 LB. \$90.50-\$100.50; 600-650 LB. \$86.50-\$92.00; 650-700 LB. \$82.00-\$87.75; 700-800 LB. \$77.75-\$82.00; 800-900 LB. \$75.00-\$79.50; 900-1000 LB. \$72.25-\$76.00. HOLSTEINS: LARGE FRAME 2, 700-800 LB. \$67.50-\$69.75; 875-900 LB. \$63.75-\$65.75.

FEEDER HEIFERS: MEDIUM & LARGE FRAME 1, 300-400 LB. \$96.50-\$105.00; 400-500 LB. \$86.50-\$95.00; 500-550 LB. \$84.00-\$89.00; 550-600 LB. \$81.00-\$86.00; 600-650 LB. \$77.00-\$83.00; 650-700 LB. \$76.50-\$79.50; 700-800 LB. \$75.00-\$77.75.

SLAUGHTER COWS: CLOSING BULK PRICES--BREAKING UTILITY 3-4 \$47.25-\$53.00. CUTTER AND BONEING UTILITY 1-2 \$48.00-\$55.75. CANNER AND LOW DRESSING CUTTER \$44.00-\$48.00.

SLAUGHTER BULLS: Y.G. 1, 1150-2200 LB. \$60.00-\$65.00, HIGH DRESSING \$65.00-\$67.50.

REPLACEMENT COWS: PRE-TESTED FOR BANGS, PREGNANCY, AND AGE. MEDIUM FRAME NO. 1 MUSCLED COWS: 5-9 YEAR OLD \$75-1050 LB. BRED 4-7 MONTHS \$57.00-\$61.50/CWT.

East Coast Carlot

Wed., Mar. 29, 1989

Report supplied by USDA

EAST COAST CARLOT MEAT TRADE DELIVERED PRICES (CAF) BOSTON TO WASHINGTON AREA INCLUSIVE.

COMPARED TO WEEK AGO: NO SALES REPORTED WITH A WEAK UNDERTONE NOTED.



FROM PURINA MILLS, INC.

Milk Pack N-S

Purina's Milk Pack N-S has been formulated for dairymen who wish to increase the intake of Niacin, Selenium, and Vitamins for selected cows.

- Highly palatable
- Convenient to feed
- Research proven

- Stimulates microbial protein production
- Increase production of volatile fatty acids
- Increased feed intake
- Milk production response in early lactation cows

Call us today for more information on this product.



PURINA CHOWS

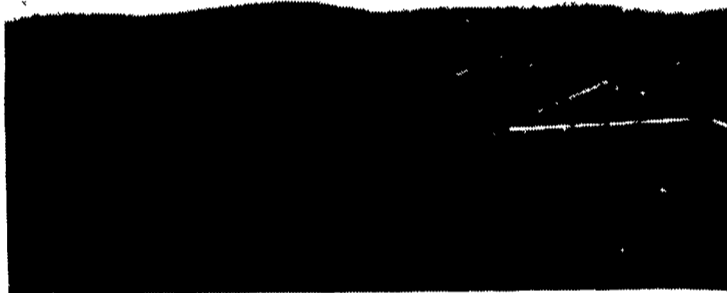
6 S. Vintage Rd.
Paradise, PA 17562
(717) 442-4183
(717) 768-3301

Rt. 82
Unionville, PA 18375
(215) 347-2377

* Registered trademark of Ralston Purina Company

POLE BUILDINGS

By Sam Stoltzfus



Custom Built To Your Specifications

• AGRICULTURAL • RESIDENTIAL • COMMERCIAL

TALBOTVILLE CONSTRUCTION

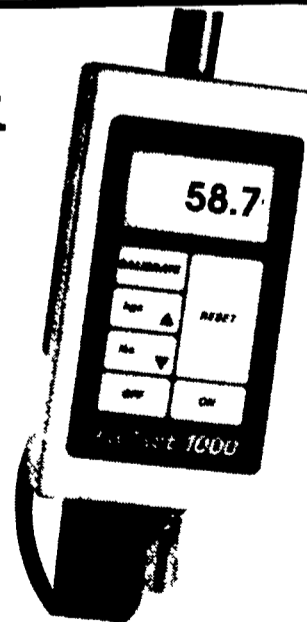
Honey Brook, PA

(215) 273-2870 (215) 273-3495 Res.

**FLO-TEST
MILK METER**

1000 Digital Milk
Readout For
Pipeline
Milker Units

- HIGHLY ACCURATE
- IDEAL FOR STANCHION BARN OR PARLOR
- INSTALLS IN MINUTES
- CALIBRATES TO ANY SYSTEM



CALL US FOR A SPECIAL DEAL DURING MONTH OF APRIL

Proudly Sold And Serviced By:

FISHER & THOMPSON, INC.

Milk Equipment Sales & Service
127 Newport Rd. Leola, PA (717) 656-3307
24 HR. SERVICE
Amos Fisher Leasing Programs Rich Thompson
(717) 687-8871 Available (717) 627-1162