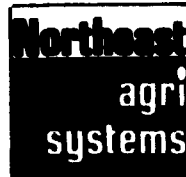




*Thanks and Congratulations
to*



DOUGLAS ELSASSER

McAlisterville, PA

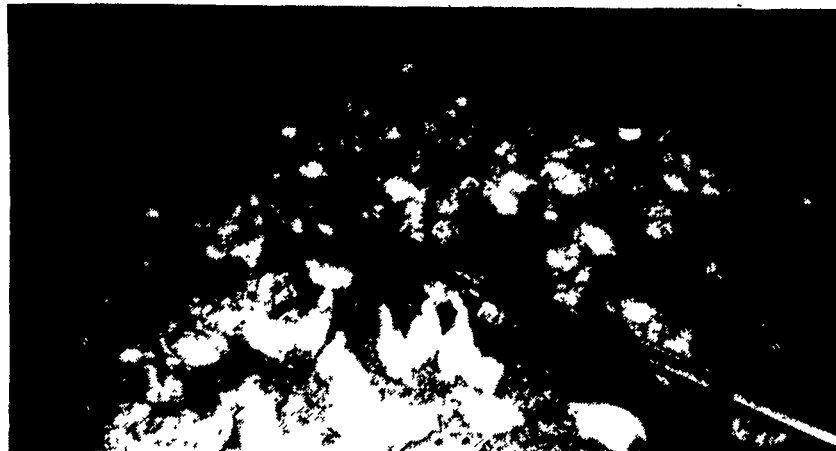
On His All New 30,000 Capacity Broiler House

This Facility Features:

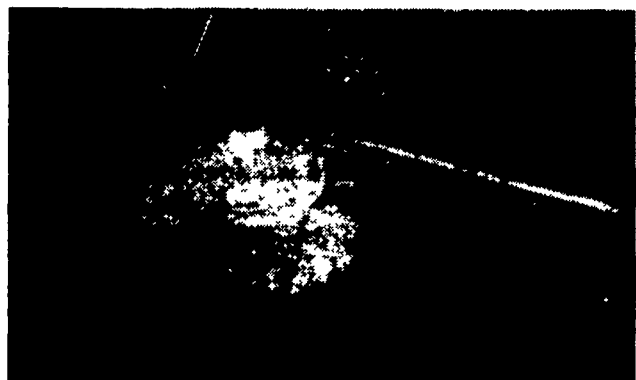
CHORE-TIME® Bins, **CHORE-TIME**® Feeding, **CHORE-TIME**® Watering, **CHORE-TIME**® Ventilation



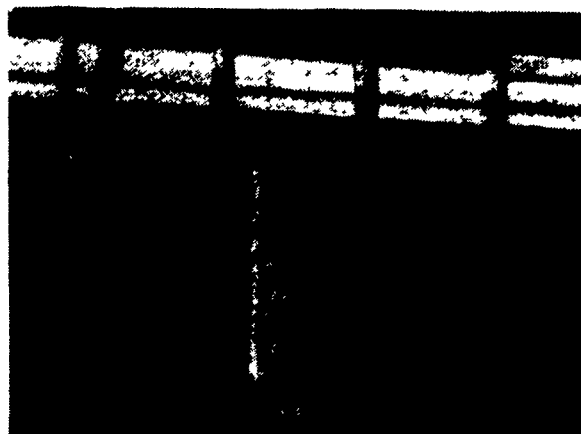
50'x400' Single Story Building With **CHORE-TIME**® Inlets And "Never Rust" **CHORE-TIME**® Polyhoods



Featuring **CHORE-TIME**®'s New H2 Feeder And The **CHORE-TIME**® **SWISH** Self-Cleaning Cups.



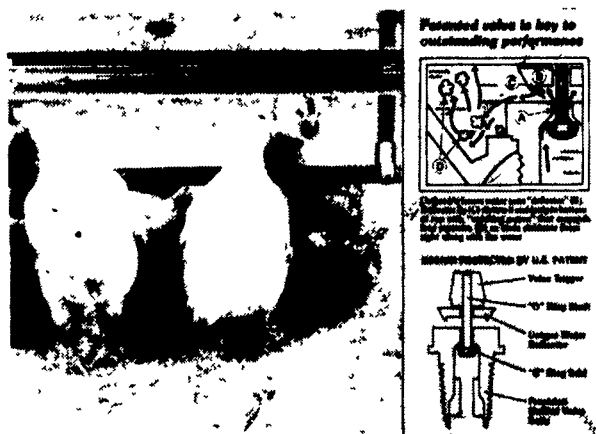
CHORE-TIME®'s NEW Chick Starter System Fills The Pan And Puts The Right Amount Of Feed On The Floor Without Excess Waste.



Heat Provided By Six **S** Shenandoah Stainless Steel 170,000 BTU Space Heaters



CHORE-TIME®'s Automatic Inlet System Closes TIGHTLY For Energy Savings.



CHORE-TIME® **SWISH** Self-Cleaning Cups Are Available In Continuous Lines Or 8 Foot Drinkers

Contracts Are Available For New And Remodeled Broiler, Turkey And Breeder Houses

For More Information Call Marlin Hurst At Northeast Agri Systems, Inc.



Equipment By
NORTHEAST AGRI SYSTEMS, INC.
FLYWAY BUSINESS PARK
139 A West Airport Rd. Lititz, PA 17543
(717) 569-2702

- Building By -

BUFFALO VALLEY CONSTRUCTION
RD #1 Box 304
Mifflinburg, PA 17844
(717) 922-1763