

Huntingdon Co. DHIA



Monthly Report

January 1989
Rolling Herd Average

Name	Breed	No Cows	Days In Milk	Milk Lbs.	Fat Lbs.
Tannery Road Farm	B3	76.8	86.6	21,160	782
Joseph M McMath	3	60.3	86.5	20,748	774
Dean E Varner	B3	38.0	86.8	21,266	754
Timothy R Peachey	3	75.6	88.2	20,659	743
Daland Farms	3	125.5	85.2	19,641	726
Gerald E McMath	B3	73.1	88.7	20,005	718
Branstetter Farms	B3	84.9	84.5	19,326	708
Lakevue Farms	B3	119.5	87.7	19,458	701
John W Lynn	B3	59.3	82.1	19,276	697
Locust Lane Farm	B3	115.0	87.1	18,927	697
Samuel K. Byler	B3	51.0	89.6	19,933	688
Carl C+Carol Barnett	B3	77.1	86.0	19,475	686
Globe Run Farms	3	96.6	89.1	18,449	684
Gibboney Farms	3	62.5	86.6	18,974	678

Terry & Cathy Eutz	B3	33.8	85.3	18,714	665
E James McMath	3	135.3	87.2	17,504	664
Geary E Shade	3	87.3	89.3	18,951	664
John C Goshorn	B3	19.8	90.7	18,872	663
John S Kyper	B3	66.2	82.8	18,198	652

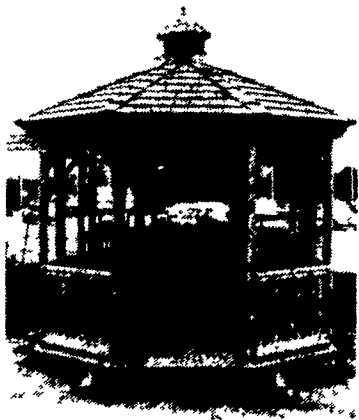
Joseph M McMath Charm	3	4-07	305	26,516	1126
Iona	3	5-06	305	27,498	928
Timothy R Peachey Honor	3	8-03	305	25,615	1120
Della	3	7-02	305	22,750	883
Earl Lake 22	3	5-00	305	26,271	967
John & Darlene Lake 12	3	4-11	305	25,282	909
7	3	5-08	305	25,359	888
Evergreen Farm No. 3 299	3	3-00	305	20,851	902
1898	3	5-02	305	23,141	863
Lakevue Farms Bridget	3	8-10	305	25,094	890

John W Lynn Ira	3	4-07	305	26,395	879
Roland G Yoder Dixie	3	6-00	305	21,145	879
Dorrie	3	5-04	305	21,032	856
Daland Farms Honeydw	3	5-05	305	25,921	868
Bretta	3	4-11	305	25,236	855



STORAGE BARN & GAZEBOS

Custom Made To Order



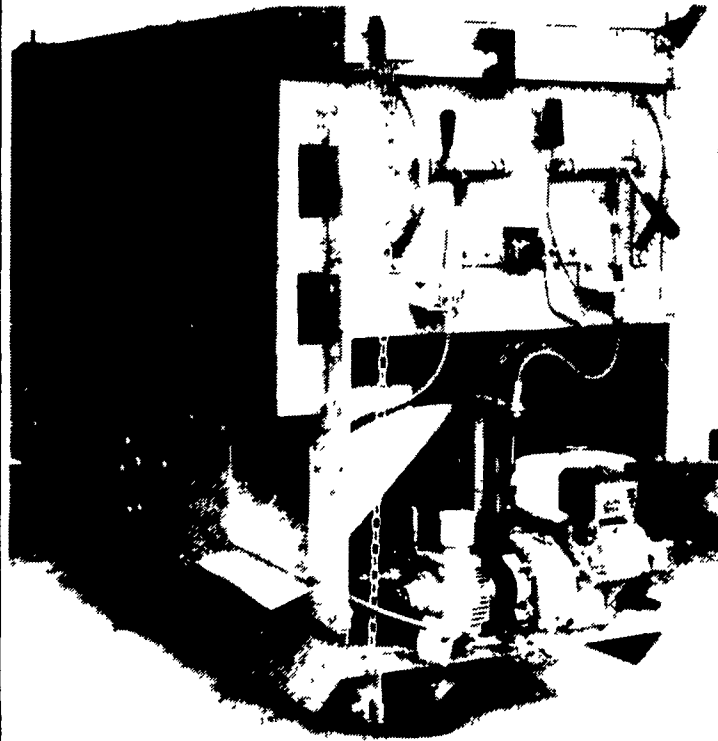
If You're Looking For Quality At A Good Price, Contact

B & B STRUCTURES

Henry K. Blank
RD 1, Bird-In-Hand, PA 17505
(717) 656-0783
Dealer Inquiries Invited

DELIVERY AVAILABLE

RISSLER TMR HYDROSTATIC DRIVE FEED CARTS



2 Sizes To Choose From!

SAVE ON FEED COSTS & LABOR PLUS - INCREASE MILK PRODUCTION ALL WITH ONE COMPACT MACHINE

- 5 H.P. Honda Engine
- 12 Ga. Stainless Steel Floor & Fiberglass Box
- Accurate Beam Scales With Beeper
- Hardware Magnet On Discharge Chute

Authorized Dealers

Towanda, Pa.
McNEAL FARM SERVICE
717-364-5460

Quarryville, Pa.
SYLVAN RESSLER
717-786-2103

Pittman, Pa.
WILLIAM ROMBERGER
717-648-2081

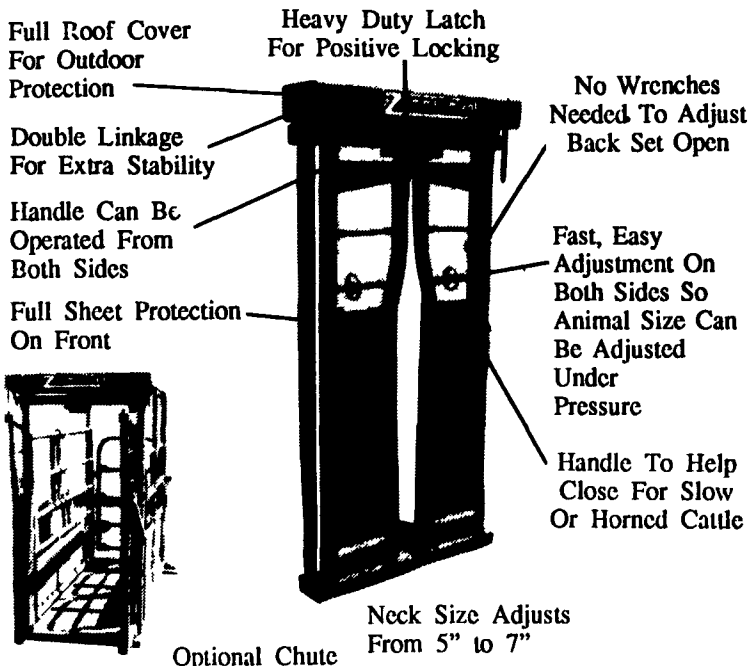
Middleburg, Pa.
RAY ESBENSHADE
717-837-5146

Lebanon, Pa.
AUTOMATIC FARM SYSTEMS
717-274-5333

I.H. RISSLER MFG. CO.
Mohnton, PA
215-484-0551



AUTOMATIC HEADGATE



PAUL B. ZIMMERMAN, INC.

Call or Write For Additional Information And Your Nearest Dealer

295 Woodcorner Rd.
Lititz, PA 17543
1 Mile West of Ephrata
Phone: 717-738-1121

WE HAVE THE EQUIPMENT TO DO THE JOB



WHITEWASHING with ADVANTAGE FARM WHITE

- DRIES WHITE
- NO WET FLOORS
- IS COMPATIBLE WITH DISINFECTANT AND FLY SPRAYS
- DOES NOT RUB OFF EASILY
- WASHES OFF WINDOWS & PIPELINES EASILY

ATTENTION!

If Your Barn Gets Wet And Mildewy Inside Over The Winter Months, Now Is The Time To Have Your Barn Whitewashed. This Way You Will Get A Lot More Out Of Your Advantage Farm White!

We will take work within 100 mile radius of Lancaster

BEITZEL'S SPRAYING

Witmer, PA 17585
717-392-7227 or Toll Free 1-800-727-7228
7:00 AM to 5:00 PM

CERTIFIED COMMERCIAL APPLICATORS
28 Years Experience

5 Trucks For Air Cleaning And Whitewashing
RADIO DISPATCHED TRUCKS

Barn Spraying Is Our Business, not a sideline
Spraying since 1961

BARN CLEANING SERVICE AVAILABLE WITH COMPRESSED AIR

To have your barn cleaned with air it will clean off dust, cob webs & lots of the old lime. This will keep your barn looking cleaner & whiter longer.

10% DISCOUNT ON TOTAL BILL WITH THIS COUPON

Good Through the Month of March, 1989
TERMS: CASH with COUPON