

JD 2040 w/145 loader, nice, \$8,750/Offer 301-833-9091

MF 850 combine, 2,200 hrs. w/1163 CH, 911S flex head, straw chopper, 1144 CH, \$35,000. 215-589-4454

MF model 40 backhoe loader diesel, 3 pt. hitch, \$5,500.; Int. TD340 crawler loader, 4x1, \$4,500; Parts for TD6 62 series loader dozers & TD9 dozers TD9 4x1 bucket; JD 450 rollers front idlers used 175C new sprockets D4D rails used Somerset Co., NJ 201-469-2744 after 5 p.m.

MOWER WOODS D80, new, \$1,800 301-833-9091

MOWER WOODS 214, sharp, \$2,500 301-833-9091

MOWER WOODS S105, ditch bank mower, very good condition, \$1,500 301-833-9091.

Model 485 Int. disc harrow, 20' wide, hyd. fold 201-439-2430

Model F8 Danuser digger, 16" auger. 717-667-3066.

New Hiniker 1120 field cultivator, 17 1/2' working width, 12' transport width, w/180 degree wing lift system, w/9800 series spring tooth mulcher attachment (215)794-5908.

New Holland Super 1049 self propelled bale wagon, excellent, \$15,000. 1047 self propelled good, \$8,200, both above 1 owner, low acreage. 1047 self-propelled, rebuilt motor \$6,750. PULL TYPES. 1034, 105 bales, \$45,500. 1033, 105 bales, \$5,900. 1010, 56 bales, \$1,600. Roeder Imp. Seneca, KS. (913)336-6103.

Zetor Tractor 50 HP, like new, 47 original hours. Farmall Super A w/belly mower. Farmall H Tractor. 8N Ford. 717-786-3087.

IRRIGATION PIPE Good used aluminum pipe, 4", 6" & 8". Band & latch or ring lock. 717-532-9108

WANTED: 21' grain bin, in good condition, for 4,000 to 6,000 bushel capacity. 717-653-5359

WANTED 3020 John Deere, Late model for parts, with good engine. 804-457-4177.

TRADE OR SELL: Nice, clean, 1976 IH Transtar, PS, for a backhoe, farm equipment or ? 301-928-3009. Between 9 a.m. & 4 p.m.

Tractor/loader/backhoes for sale; IH 3500, 1975 w/cab, \$12,500, JD 310A, 1977 w/cab, \$14,500, Case 680E, 1974 w/cab, \$15,500, Call Gregg Hafer, 215-376-9738.

Transplanter 2 row, 3pt hitch, almost new International Farmall A-V tractor Touch controls with cultivators. 60 inch bed shaper (302)653-6824

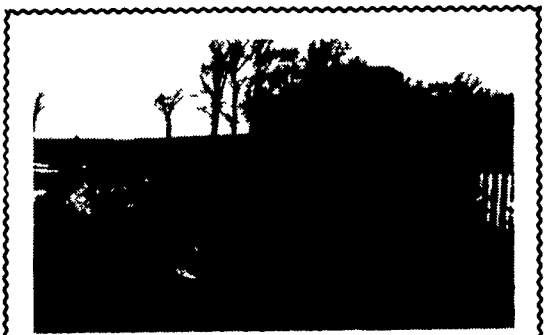
Unverferth Culti-System 5000; 1 pass secondary tillage; trip shank, heavy duty danish, rolling baskets, new shovels, has spinner spreader attachment to finish and sow 1 acre every 5 minutes, like new, \$5,900. 814-736-8266 Evenings.

USED TRACTOR PARTS, also rebuilt clutches and torques. We ship UPS. Hill-T Farm Sales - Service, 4295 Richmond Palestine Road, New Madison, Ohio 45346 513-548-0718.

USED TRACTORS Ford 7000 diesel, dual remote, excellent condition, \$7,000 MF 165, gas, remote, excellent condition, \$4,000. Used backhoe attachment on tool bar, will fit MF 400 or JD 350 track-loader, \$4,500. Ringo Hill Farms, Rt 212, Pleasant Valley, PA (215)346-7340.

Vegetable Crop Machinery USED: Lilliston Rolling Cultivators, Strawberry renovator, Potato digger. NEW: Early sweet corn layer/planter, pumpkin planter, transplanters, model 1000, 4000 and others, Holland & water wheel type plastic mulch planters, mulch layers from \$385, Stanhay and Nibex precision seeders, Cole Planet Jr. & Multiflex vegetable seeders, Howard Rotavators, Tilovators, Multi-vators, Lilliston Rolling cultivators, Bedshapers, Market Farm Implement, Catalog \$2.00. RD2, Friedens, PA 15541 (814)443-1931.

V-plow, fits IH loaders, 8' wide, \$550 NI 279 cut/ditioner, 9' MC flail/chopper 717-949-3074 early mornings & late evenings.



CAT 910
1/4 Yard Loader, v.g. cond.
\$13,000
301-833-9091

DEPENDABLE MOTOR CO.
East Main St., Honey Brook, PA.
215/273-3131 or 215/273-3737

USED EQUIPMENT

- | | |
|---------------------------|-------------------------------------|
| NH 519 Spreader | NH 258 Rake |
| NH 822 Corn Head | Peerless Ear Corn |
| NH 1495 Haybine, Cab, Air | Grinder-Blower, Excellent Condition |
| NH 718 Harvester | |

DEALER FOR
Roskamp



FOR SALE

- | | |
|-----------------------------------|----------|
| IH 674 & Loader..... | \$9,000 |
| IH 1586 Cab, Weights & Duals..... | \$16,000 |
| IH 1566 Cab Weights..... | \$9,800 |
| IH 1086 Cab Weights & Duals..... | \$15,000 |
| IH 1066 Cab..... | \$8,750 |
| IH 1466 No Cab..... | \$8,700 |
| MF 285 1600 Hr..... | \$9,000 |
| MF 1135 Cab..... | \$8,750 |
| AC 180 Cab..... | \$5,500 |
| Case 1175 Cab..... | \$6,750 |
| JD 50 3 Point..... | \$1,400 |

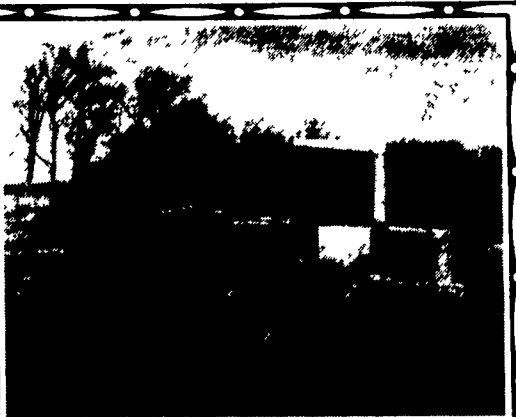
Glenn Erdley
RD 1, Box 531, Lewisburg, PA 17837
717-524-0713

TRACTOR WANTED

CASE/DAVID BROWN

995 OR 1210 4 WD

CALL (717) 386-4249



CAT 910
1/4 Yard Loader, v.g. cond.
\$13,000
301-833-9091

LOADER ATTACHMENT JD 145 w/wide bucket & valves, \$2,200. 301-833-9091

LOADER ATTACHMENT IHC #1501, hyd. bucket, like new, \$1,500. 301-833-9091

MANURE SPREADER NI 244, tandem, Gratz chain, 1 owner, like new, \$3,500. 301-833-9091

Are You Putting Your Dollars Where The Steel Is?

LUCKNOW TMR MIXER

Heavy Duty Primary Drive System w/ Heavy Duty 100 & 140 Standard Sized Chains, Designed For Easy Maintenance.



Standard Discharge Carries Approximately 18" Past Wheel Hydraulic Driven w/Double Unloading Auger.

Handling Easton Electronic Scales and Platform Scales

The Most Durable And Heaviest Built Mixer Available Today

REBUILDING TMR MIXER WAGONS

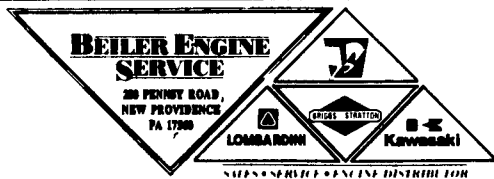
For Pricing, Parts and Service

Call **YOUR FARMNEEDS, INC.**

Robert M. Vanderbosch - Robert J. Barber

Ohio, N.Y. • 716-257-9775

HANDLING EATON ELECTRONIC SCALES
USED MIXERS ALSO AVAILABLE



ATTENTION BALER ENGINE OWNERS



This twin 20 hp is becoming very popular for hay balers and other applications traditionally equipped with 2 cylinder Wisc. engines and can also replace the older 4 cylinder engines on some applications.

We Stock A Large Selection Of Baler Engines

- | | |
|---------------------------|----------------------------------|
| 20.0 HP Kawasaki | 16.8 HP Wisconsin |
| 18.2 HP Wisconsin | 18.2 HP Wisconsin |
| 19.0 HP Lombardini Diesel | (1) Used 25 hp Lombardini Diesel |

We offer in the field emergency service on baler engines.

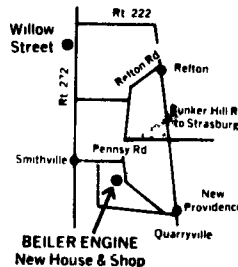
Call Hoover Diesel at 717/786-7943 and they can contact us or our driver.



Pick Up & Delivery Available
We Ship UPS

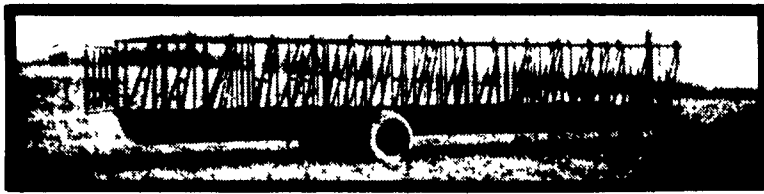
Hours

Mon.-Fri. 7-7 Saturday 7-5 Closed Sunday



BEILER ENGINE
New House & Shop

FEEDER WAGONS WITH SELF-LOCKING HEAD GATES



SLANT BAR FEED-THROUGH FEEDERS IN 16', 21', 27' LENGTHS

16', 21', 27' Lengths Available A Great Feature For Feeding Cattle In Meadows Or Feed Lots

Three Wagons Can Be Used For Feeding Round Bales, Square Bales, Silage & Etc.

Especially Where Ag Bags And Piles are Being Used

The Added Feature Of Having The Head Locks Makes It Easy For Quick Vet Checks, Etc.

Also Available - Headlocks In Sections

For More Information and Prices Contact:

STOLTZFUS MANUFACTURING

RD #1 Honey Brook, PA 19344

215-273-3603 or 215-273-3050

Dealers

Walnut Barn and Dairy Equipment
RD 2, Box 737
Port Royal, PA 17082
717-436-9429

Herman Cook
3154 Frazer Rd.
Newark, DE 19702
302-836-1732

Norman R. Shores
RD 5, Towanda, PA 18848
717-625-9014

USED EQUIPMENT

- Massey Harris Pony w/cultivator and 1 bottom plow
 - NH 555 Skid Steer, Good Condition
 - Mustand skid steer, 445
 - NH 273 baler w/thrower
 - 350 Farmall
 - 400 Farmall
 - Ford 1200 4 WD
 - 667 Tank Spreader hydro hid., very good condition
 - NH 513 w/upper beater
 - IH 225 SP windrower
 - Full Line Ford New Holland Dealer
- R & W EQUIPMENT**
Formerly Paul Shover's Inc.
Carlisle, PA
(717) 243-2686

GOOD USED FARM EQUIPMENT

- JD 245 loader, like new \$3,750
- IH #55 chisel, 9-tooth, 3 pt.....\$925
- Pequea 7' hay tedder, PTO, new..... \$1,225
- NH 411 discbine, (NEW)..... \$10,500
- NH 489 haybine, (NEW) w/ hydraulic hitch \$7,700
- JD 110 disc, 12', nice..... \$1,450
- INT. 550 Plow, 5 bottom 16" for 575 & New Holland 256 Rake \$875

CAN DELIVER..WILL TRADE
717-933-8134