

This 62-cubic-foot ground-driven manure spreader is offered in tractor or horse-drawn models.

## Millcreek Manufactures Compact Spreader

**NEW HOLLAND (Lancaster)** — A 62-cubic-foot ground-drive spreader in tractor or horsedrawn version has been introduced by Millcreek Manufacturing, New Holland, Pa. The new Model 75 spreader features a ground-drive system that was originally designed for spreaders with 25

percent more capacity. The company says the oversize system will allow longer life with fewer problems.

The Model 75 can be ordered in either tractor or horsedrawn version. An 18 horsepower tractor will pull the unit. Two horses are needed for the horsedrawn unit in

most normal field conditions. The unit will fit through a five-foot door and is ideal for horse and hobby farms to make stall clean out easier.

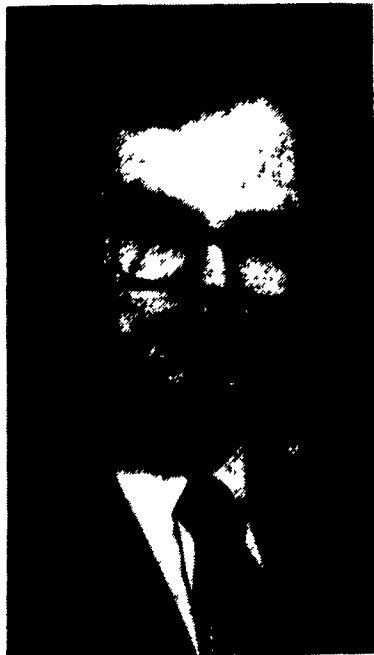
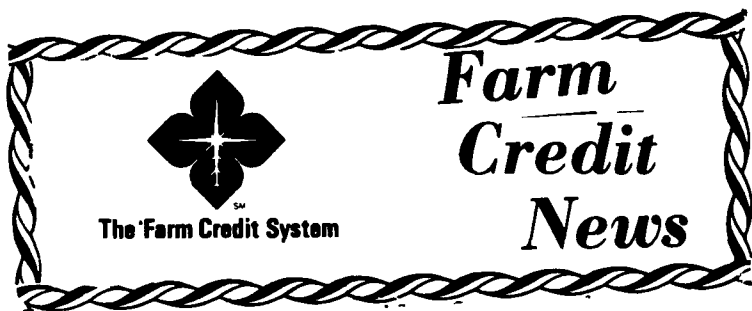
For More Information Contact: John Bentley, 717-355-2446, 110 South Railroad Avenue, New Holland, PA 17557.

## Farm Credit Promotes Renner

**YORK** — Chris E. Renner has been promoted to the position of senior loan officer for York Farm Credit, ACA, according to Duane G. Bosler, vice president. In this position, Renner will continue to serve farmer members of York Farm Credit, ACA, in Cumberland County.

Renner, a native of Adams County, attended Penn State University and graduated with a Bachelor of Science degree in agricultural business management. Prior to joining Farm Credit he owned and operated his own business in Littlestown, Pa.

York Farm Credit, ACA, is affiliated with the Farm Credit Bank of Baltimore, part of the nationwide Farm Credit System, the nation's leading agricultural lending institution. The Bank provides funds and service to 16 other agricultural credit associations (ACA) in Pennsylvania, Maryland, Delaware, Virginia, West Virginia, and the Commonwealth of Puerto Rico.



Chris E. Renner

## Case IH Offers Buyer's Guide

**RACINE, WI** — The full line of Case IH agricultural equipment is featured in the "1989 Agricultural Equipment Buyer's Guide," which is now available.

The 84-page color-illustrated catalog provides information on Case IH tractors, combines, cotton pickers, planters and other crop

production equipment, tillage equipment, hay and forage equipment, harvesting equipment and materials handling equipment.

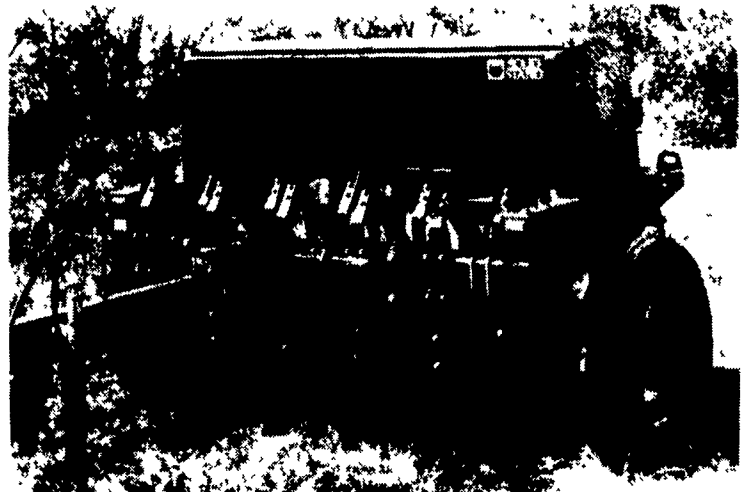
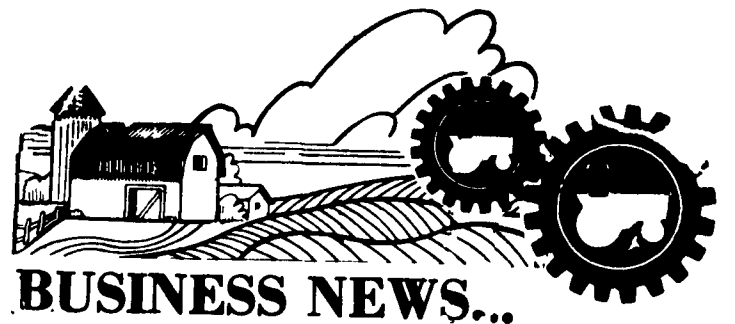
The "1989 Agricultural Equipment Buyer's Guide" is available from Product Public Relations, Case IH, 700 State Street, Racine, WI 53404.

## Hog Slat Adds Gestation Stall To Line

**NEWTON GROVE, NC** — Hog Slat Inc. recently announced the addition of a new and improved gestation stall to their product line. The new model provides the double benefit of healthier sows, plus reduced equipment costs. The clean environment enables sows to thrive, reducing the number of cull sows dramatically; while solid-steel construction ensures exceptional equipment lifespan.

The North Carolina design is made of painted solid steel, including legs. The following features are standard on all equipment: feed tube drop integrated into stall, solid horizontal bars at rear, solid vertical rods on front and back gates, solid vertical sow protector bars, easy-open front gate with gate rod system to prevent animal from opening gate.

Stalls are available in 20-inch and 24-inch on-center widths, 42-inch high, seven feet long. The same design also is available as a solid stall without feed tube or with galvanized tubular construction.



The solid stand drills on this no-till drill have been designed to keep the ground-working components in line with the large end wheels. The implement also features dial-a-depth adjustment system, which provides a choice of coulters and double-disk openers.

## Great Plains Presents 7-Foot No-Till Drill

**ASSARIA, KS.** — Great Plains brings more than a million acres of no-till experience to their new 7-foot No-Till Drills. These are drills specifically designed for no-till applications from the ground up.

These solid stand drills have been carefully designed to keep the ground-working components in line with the large 9.00x24 end wheels. The end wheel/opener alignment means that the openers neither gouge the soil nor leave the ground; they simply follow the terrain right with the end wheels. Following field curves is easier because the openers aren't side-loaded as they are on units with rear-mounted transport wheels.

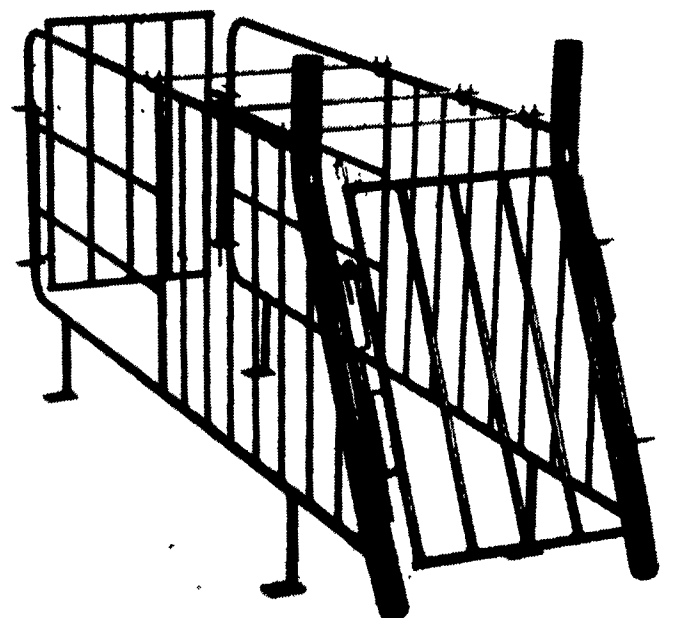
The Great Plains no-till drills feature the industry leading dial-a-depth adjustment system. This penetration is superior because they provide a choice of coulters

and also double-disk openers, held in the soil by hefty down pressure springs.

The consistent, dependable end wheel drive gives the best in reliability for no-till conditions. Since they're built for no-till conditions, these no-till drills are great at clearing residue: streamlined components slip trash, while the proper coulters to opener distance allows residue to pass through.

Their versatility, their residue clearance, and their compact design make these drills a natural choice for Soil Conservation Districts and other conservation organizations. Their narrow widths make them perfect for narrow roads and gates while their simple, rugged construction is ideal for renting or custom drilling.

For more information contact Great Plains Manufacturing Inc., PO Box 218, Assaria, KS 67416.



Featuring solid-steel construction, this gestation stall also has an integrated feed tube drop, solid horizontal bars at rear, and easy-opening front gate with gate-rod system to prevent animals from opening the gate.