

Texas Charolais Show

(Continued from Page D2)

Rocking BAB Ranch, DeFuniak Springs, Fla.

The reserve intermediate champion bull was Kahuna Pld, a 1987 son of Silver Creek High-Rise owned by Hall's Charolais Farms of New Richmond, Ohio, and The Wolfridge Group of New Richmond, Ohio. The junior champion was WC Jobber 7046P, a 1987 son of Lochmoor Sterling 1S owned by Thomas Charolais Inc. of Raymondville, Texas. The reserve junior champion was Mr J Bar T H R G-703, a 1987 son of DBL Hooks Avignon G703 owned by Lesa King of Howe, Texas.

The senior champion bull was B-C Mountaineer 3656 P/S, a 1986 son of RCR Progenitor 4332 owned by Marti Charolais of Cleburne, Texas. The reserve senior champion was SCC Aggie 677, a 1986 son of RER Elite P138 owned by Double R Dees of Nacogdoches, Texas; Shallow Creek Charolais of Madisonville, Texas; and Marti Charolais.

Other champions in the female show included the junior calf champion, SCC Skye 830, a Jan. 4, 1988, daughter of BR-MF Krugerrant T752 owned by Sharla Adams and Shallow Creek Charolais of Madisonville, Texas. The reserve junior calf champion was Perfection's Charolais of Warsaw, Ind., and Willard Walker. The reserve senior calf champ-

ion was Airhart Iris ET, a 1987 daughter of BR-MF Krugerrant T752 owned by Dewey Charolais Ranch and Airhart Cattle Co. of Clarkesville, Ga., and Springdale, Ark.

The intermediate champion female was Perfection's 5-Star ET, a 1987 daughter of Roxy's Jack Dempsey 63R owned by Grassy Forsk Farm of Catawba, N.C., and Willard Walker. The reserve intermediate champion was SLC High Society 020 ET, a 1987 daughter of BR-MF Krugerrant T752 owned by Dan Kelley of Mabank, Texas. The reserve senior champion was Miss Krugie's Mac Polled, a 1987 daughter of BR-MF Krugerrant T752 owned by Willard Walker.

The first place cow/calf pair was RRR Royal Mabel 5319, a 1986 daughter of Strike, and her heifer calf RRR Miss Cara 5924, a July 16, 1988, daughter of Silver Creek High-Rise.

In group competition, Willard Walker had the first place produce of dam on Cardinals Talia R773, the first place junior get-of-sire on BR-MF Krugerrant T752 and the first place group of five. Dewey Charolais Ranch exhibited the first place get-of-sire on BR-MF Krugerrant T752 progeny; and Shallow Creek Charolais and Sharla Adams had the first place breeder's herd.

Sheep, Lamb Inventory

Sheep and lamb inventory in the United States totaled 10.8 million head on January 1, 1989, according to statistics released by the Agricultural Statistics Board. Figures were nearly the same as a year earlier. The value of sheep and lambs on hand totaled \$890 million, down 8 percent from January 1988. The average value per head was \$82.40, also down 8 percent from a year earlier. Stock sheep inventory increased to 9.19

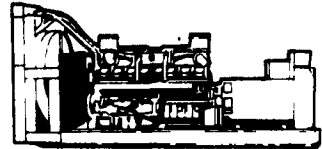
million head, up 1 percent from 9.14 million last year. Ewes one year and older, at 7.17 million head, were nearly the same as a year earlier. Ewe lamb inventory totaled 1.34 million head, up 4 percent. Sheep and lambs on feed for the slaughter market in the 25 major feeding states totaled 1.61 million head, down 2 percent from January, 1988.

Breeding ewes one year and older were up 4 percent from the

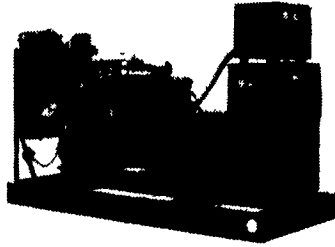
previous year. The 1988 lamb rate was 99 per 100 ewes one year old or older on hand at the beginning of the lambing year compared with 104 in 1987. Goat numbers in Texas totaled 1.75 million, up 6 percent from a year earlier. Total value of \$94.7 million was 4 percent below a year earlier. Angora goat inventory on January 1, 1989 in the five major producing states totaled 1.82 million head; value totaled \$1.2 million.



MARTIN MACHINERY



SPECIAL SALE



~~\$6,950.⁰⁰~~
\$6,450⁰⁰
(While Supply Lasts)

WINCO POWER PLANTS

- 30 KW 120/240 Volts 1 Phase
- 1800 RPM
- 225 C.U. in. Chrysler Industrial Engine
- Brushless Alternator
- A.C. Meter Panel
- Engine Guages
- Automatic Start Control Panel
- Four Light Safety Shut Down
- Main Line Circuit Breaker
- Block Heater
- Enclosure Included (Suitable For Indoor or Outdoor)

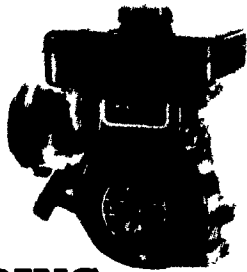
P.O. BOX 35
MARTINDALE, PA 17549
215-445-4585

RT 1 BOX 166
VERSAILLES, MO 65084
314-378-5457

INTRODUCING

A Kawasaki engine with a float carburetor specially designed for a wash machine. The FA76 engine has performed very well for us since they were introduced in 1984 but we have found to obtain the first pull easy starting we needed a float carburetor which is the reason for this special engine.

Kawasaki
FA76D
76cc • 1.7 hp
4000 rpm



FEATURING

- 1.7 hp Ample power for wash machines
- Float carburetor for easier starting
- Weighs only 16 lbs. - Runs washer quietly with minimum vibration. Almost comparable with electric. Saves casters and machine wear.
- Electronic ignition for sure starting when wet.
- Automatic compression release makes it the easiest pulling engine on the market.
- Low oil shutdown stops engine when oil is low.
- Long life cylinder and replaceable crankshaft bearings make it a long lasting rebuildable engine.

Special Pre-Delivery Introductory Price

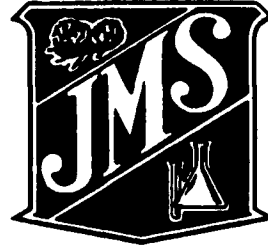
\$198.00 postpaid

Engines are now in stock for immediate shipment. Engine brackets and pulleys also available.

DEALERS:

- Beller Engine Repair Shop, 1622 Georgetown Rd., Christiansa, PA 17509
- Beller's Saw & Repair Shop, RR 1, Box 98, Loganton, PA 17747
- Beller Farm Shop, RR 1, Box 195, Paradise, PA 17562
- Emanuel S. Lantz, 3816 E. Newport Rd., Gordonville, PA 17529
- Stoltzfus Engine Service, 2447 Stumptown Rd., Bird-in-Hand, PA 17505
- Sensenig Diesel Service, RR 3, Box 197, Sellinsgrove, PA 17870
- Shirk's Repair Shop, RD #2, Pool Rd., Ephrata, PA 17522 • 717-857-2797
- Smucker's Repair Shop, 94 Summit Hill Rd., Strasburg, PA 17579
- Beller Engine Service, 280 Pennay Rd., New Providence, PA 17560
- Beller's Repair, RR 2, Box 54, Watsonstown, PA 17777
- Zook Engines, RR 4, Box 344, Honey Brook, PA 19344
- Ridge Repair Shop, RR 2, Stevens, PA 17278 • 215-267-8417
- Stoltzfus Repair Shop, Star Rt., Box 31B, Rebersburg, PA 16872
- Lapp's Sharpening Service, RR 2, Box 276, Myerstown, PA 17067

bin bustin' beans!



**We Have J.M. Schultz Soybeans
To Sell**

**Wholesale - Retail
Group II and Group III**

The best profit, best yielding beans you can plant in this area.
J.M. Schultz Seed Co., Dieterich, IL
See us now for the profit facts!
Contact

Northampton County Seed Co., Inc.
Ask For Doug Walker
215/837-6322