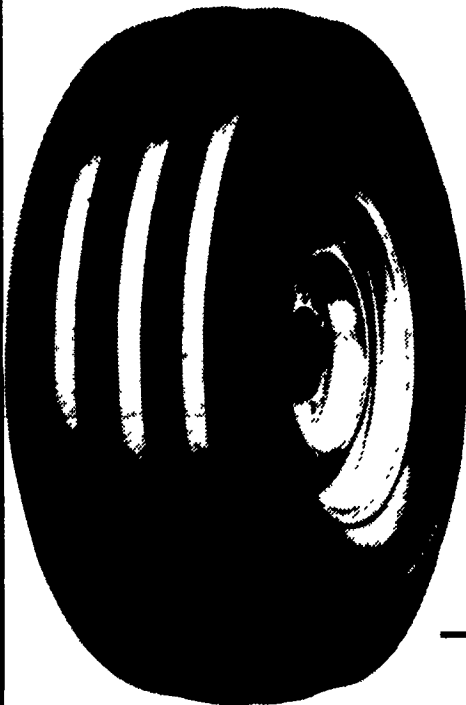


GOODYEAR FARM TIRE BARGAINS



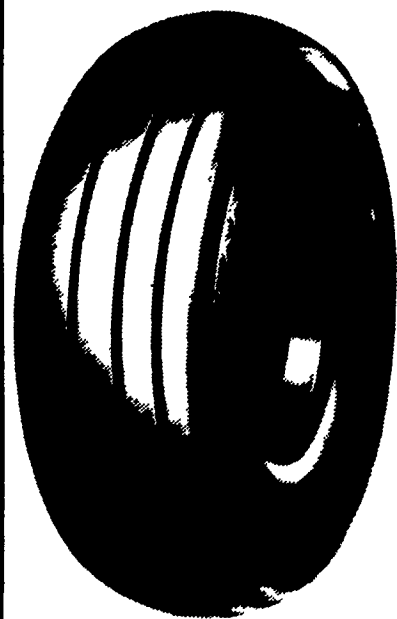
FRONT TRACTOR 3 Rib

600-16 4 Ply TT	\$46.00
600-16 6 Ply TT	\$50.00
650-16 4 Ply TT	\$53.00
650-16 6 Ply TT	\$58.00



4 Rib

750-16 6 Ply TT	\$65.00
95L15 6 Ply TT	\$71.00
11Lx15 6 Ply TT	\$85.00
11Lx15 8 Ply TT	\$89.00
1000-16 6 Ply TT	\$93.00
1000-16 8 Ply TT	\$95.00
1100-16 6 Ply TT	\$108.00
1100-16 8 Ply TT	\$114.00



FARM UTILITY WAGON TIRES

95L-15 6 Ply TT	\$49.00
95L-15 8 Ply TT	\$51.00
95L-15 6 Ply TL	\$54.00
95L-15 8 Ply TL	\$56.00
11L-15 6 Ply TT	\$52.00
11L-15 8 Ply TT	\$54.00
11L-15 8 Ply TL	\$59.00
12L-15 10 Ply TT	\$73.00



The Hard-Working, Hard-Pulling Tractor Rear DYNA TORQUE II

- Excellent drawbar pull with long-bar, short-bar lugs for improved traction
- Designed for improved stability and roadability, plus reduced vibration
- Strong angle-braced lugs have self-cleaning design
- High-strength polyester cord body, and heavy duty rim shield protects tire from damage



We'll fix it in the field! Gold Star Pit Stop Service. On-farm tire service when you need us. Just give us a call and we'll be right there. You'll be back on the job in a flash!

11.2-28 4 Ply	\$160.00	18.4-38 6 Ply	\$410.00
12.4-28 4 Ply	\$180.00	18.4-38 8 Ply	\$445.00
13.6-28 4 Ply	\$210.00	20.8-38 8 Ply	\$599.00
15.5-38 6 Ply	\$283.00	18.4-42 10 Ply	\$619.00
16.9-38 6 Ply	\$365.00		
18.4-34 6 Ply	\$370.00		

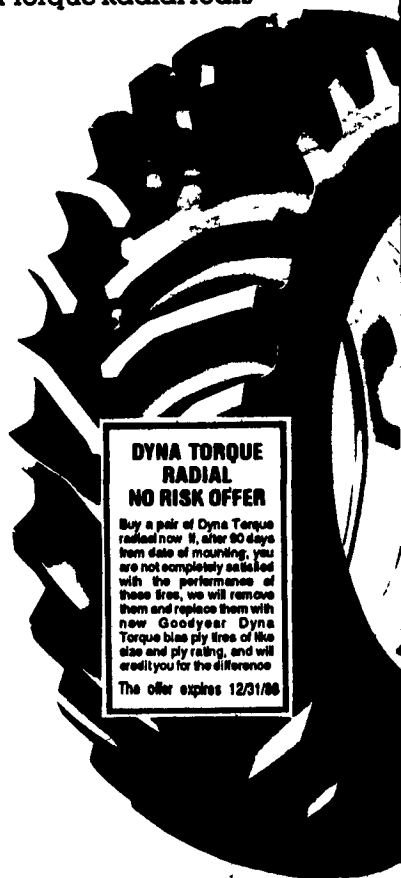
Get the pull of your life with Dyna Torque Radial rears

DYNA TORQUE RADIAL

- Revolutionary 3-lug per pitch design improves traction and ride
- Computer designed "natural" shape casing improves tire body life
- Radial construction provides better traction, lower fuel and overall costs

15.9R38 ★	\$510.00
18.4R34 ★	\$480.00
18.4R38 ★	\$535.00
20.8R38 ★	\$750.00
24.5R32 ★	\$955.00
18.4R42 ★★	\$685.00

- Compare Our Size Dimensions
- Compare The Number Of Bars
- See The Footprint As Compared With Other Brands



DYNA TORQUE RADIAL NO RISK OFFER

Buy a pair of Dyna Torque radial now. If, after 90 days from date of mounting, you are not completely satisfied with the performance of these tires, we will remove them and replace them with new Goodyear Dyna Torque bias ply tires of the size and ply rating, and will credit you for the difference. The offer expires 12/31/89.

See Your Independent Dealer For His Price And Credit Terms. Price And Credit Terms As Shown At Goodyear Commercial Tire Centers In All Communities Served By This Newspaper.

Peoples Sales & Service Inc. Oakland Mills, PA 717-436-2735	Crescent Tire 325 S. Whitehorse Pike (Rt. 30) Hammononton, N.J. 609-581-1155	Brad Ragan, Inc. 1818 Grammes Rd. Allentown, PA 215-797-6115	Service Tire Truck Centers 2424 State Rd. Bensalem, PA 215-639-1882	Service Tire Truck Centers 2320 Avenue A Bethlehem, PA 215-691-8473	Colledge Tire 510 W. State St. Kennett Square, PA 215-444-5030
Goodyear Commercial Tire Center 165 Keystone Rd. Chester, PA 215-494-2160	Horlacher & Sherwood 153 E. Tioga Tunkhannock, PA 717-836-1116	Henry Tire Service 3108 W. Mkt. St. York, PA 717-792-9779	Automotive Service 1350 Schuylkill Ave. Reading, PA 215-374-3414	Goodyear Commercial Tire Center 1-81, Rt. 39 Harrisburg, PA 717-657-1005	Goodyear Auto Service Center 260 W. Hamilton Ave. State College, PA 814-238-4955
P. Lebzelter Rt. 72 & Lausch La. Lancaster, PA 717-569-3776	Dices Tire Shop 1421 Lincoln Way Chambersburg, PA 717-264-9312	Ron Davis Tire Center 816 Providence Road Scranton, PA 717-342-7544	Sunbury Frame 5th & Arch Sts. Sunbury, PA 717-286-4921	Service Tire Truck Centers 99 Whiteman Rd. Reading, PA 215/921-8473	Kirkwood Tires, Inc. 1829 Kirkwood Hwy. Newark, DE 302-737-2460
Pat & Red's Tire Service, Inc. 107 Brown St. E. Stroudsburg, PA 717-424-6178	Zimmerman Farm Service School Rd Bethel, PA 717-933-4114	Lebanon Valley Imp. Co. 700 E. Linden St. Richland, PA 717-866-7518	BHM Farm Equipment RD 1 Rt. 934 North Annville, PA 717-867-2211	Shueys Sales & Service Jonestown Road Ono, PA 717-865-4915	Umbergers of Fontana RD #4 Lebanon, PA 717-867-5161