



## Have You Heard?

By Doris Thomas  
Lancaster Extension  
Home Economist

### About Care Of Aluminum Cookware

Aluminum cookware is prized for its lightweight durability and heat conducting qualities. Regular care calls for washing in a solution of liquid dishwashing detergent and water. Stains can generally be removed with a steel wool soap pad. Severe stains and discolorations can be removed by boiling a solution of two or three tablespoons of cream of tartar, lemon juice or vinegar for each quart of water in the utensil for about five to ten minutes. Then lightly scour with a steel wool soap pad. The cooking of acid foods such as tomatoes or cabbage will remove stains naturally, yet not affect the food.

Since undissolved salt can cause pitting in aluminum surfaces, always add salt to liquid after it is boiling and stir so the salt dissolves completely. Salty and acid foods should not stand in aluminum utensils for long periods of time.

Use cooking utensils of wood, plastic or smooth-edged metals to prevent scratching of the aluminum. The cookware may be washed in the dishwasher although aluminum darkens when exposed to certain minerals and alkalis found in some foods and water. Avoid placing cookware directly

in front of the detergent dispenser so that it does not come in contact with undissolved detergent.

### About The Winter Blanket Story

Cotton blankets are not for all year 'round and for good reason. Heavier weight cotton thermals have been introduced to meet the consumer demand for natural fibers. And the easy care of automatic laundering may also be a contributing factor.

Blankets of wool and wool-acrylic blends are still favorites, however, and they are appearing in a variety of fashion looks and weaves. A wool blanket with a waffle weave pattern and 6-inch pleated satin binding is one noteworthy example, as is a thermal wool blanket with specks of color throughout its weave. The look is achieved by placing several colors of wool fibers on a single yarn through stock dyeing.

While heavier-weight cotton thermals are popular, not all blankets are heavy this year. Some acrylics weigh little more than two pounds, an adequate weight considering the thermostat settings in many homes.

Acrylic blankets are getting a lot of attention because many of them have prints that add interest to a variety of decors. Country motifs are among the latest

designs. These printed blankets, generally an acrylic/polyester blend, use a needle punch construction.

Coordinated bedding ensembles are popular. Some blanket manufacturers are offering blankets in a variety of colors to match sheets. Blankets and throws are used as accents in bedrooms, for example, a throw in a pastel stripe and three colors to coordinate with a blanket.

### About Managing A Money Crunch

Most families have problems paying bills at some time. People have trouble paying bills for many reasons including unemployment, reduced farm income, illness, divorce or misuse of credit.

If you have this problem, don't panic. You can reduce your anxiety by taking charge of your spending practices.

You may have to reorganize your everyday living around a new set of priorities. Setting priorities will help you make day-to-day decisions with the money you do have, cope with your creditors, control your finances, and protect your family's health and welfare.

First, you need to take a realistic look at your financial situation. Begin by making a list of your money resources and estimate your family's current monthly and yearly income.

Next, make a list of everything you own including savings, cash value of life insurance policies, and other cash reserves. List anything that could be converted to cash.

Then make a list of your bills totaling the payments on the list to get an estimate of your monthly expenses. Don't forget to record quarterly or annual payments such as life or health insurance premiums.

Now you are ready to make a

plan to regain control of your finances.

You need to look over the lists and make some difficult choices. Look at the things you can do and don't dwell on the problems. But your new plan must enable you to adjust to your current income, whatever the amount.

Don't kid yourself about your financial situation. If your income is less than your expenses, something will have to change. If you continue spending as you did before, you will plunge into debt or use up all of your savings and assets.

## Protect Trees From Winter Damage

ANNAPOLIS, MD. — "Winter sun damage to shade and fruit trees may be a problem this winter," cautions Charles Staines, Supervisor of Nursery Inspection for the Maryland Department of Agriculture. However, he says there are things you can do about it.

"The damage to trees that is a concern this year is called 'sunscald' or 'frost cracks', and it is caused by a rapid fluctuation of temperatures in winter," Mr. Staines says.

"The sun warms up tree bark to above freezing, allowing water to flow freely up and down inside the trunk and branches. When temperatures drop at night, the water freezes, cracking the bark and injuring the tree. If the sun scald is severe, it may kill a tree. Otherwise, it can destroy the bark and allow insects or disease to invade the tree eventually killing it."

"Damage from sun scald is mostly on the south side of deciduous trees located in mostly sunny areas. It is generally confined to the trunk. Newly planted thin

barked trees such as maples and ash are at high risk."

"To protect deciduous trees, simply wrap their trunks with a paper wrap which is available at hardware and garden stores. This wrap helps to reflect heat from the tree so there is not great temperature fluctuation."

"A similar type of injury occurs on some conifers. The sun heats up the dark needles, water flows and then later freezes. This causes what is known as winterburn, a bronzing or browning of the needles. Arborvitae is especially susceptible to this injury."

"Unfortunately wrapping the trunks of conifers will not protect them from this injury. Since the problem occurs in the needles. The next time you plant an evergreen choose a plant more resistant to winterburn, such as a juniper, or plant it in a protected area away from direct sun," Mr. Staines concluded.

For further information contact your local county extension agent or nursery professional.

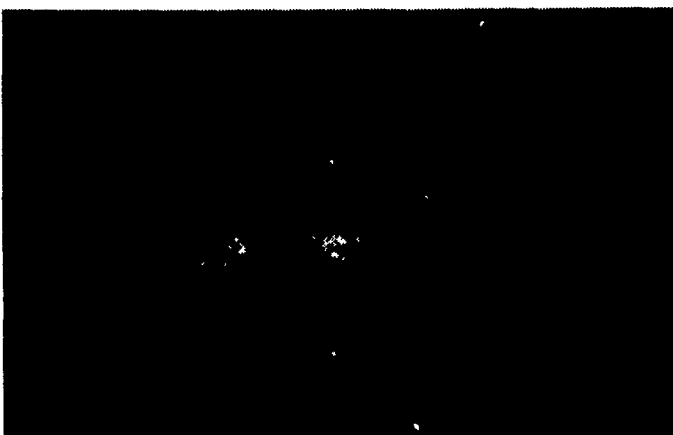
**Get MOOOv'n'  
with   
Dairy Foods!**

### POURED REINFORCED CONCRETE CONSTRUCTION

## MANURE STORAGE TANKS

DEPEND ON US FOR TOP QUALITY

- Steel In Circular Manure Pits Grade 60
- Walls In Circular Manure Tanks 4000 PSI Concrete



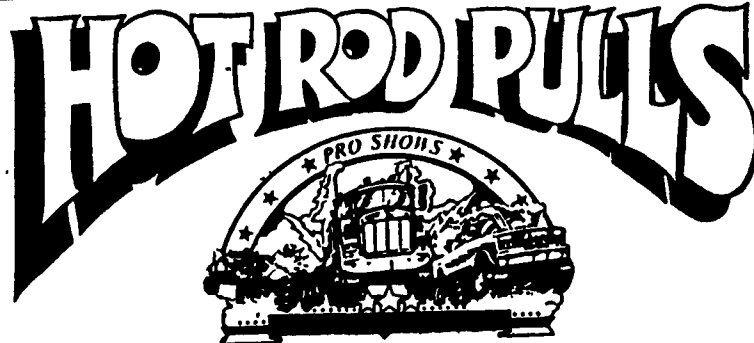
**We Will Build A Manure Storage Tank To Fit Your Needs!**

Complete With Chain Link Fence  
In-ground or Above-ground  
SCS Approved

SIZES AND LAYOUTS TO YOUR SPECIFICATIONS

**Groffdale  
concrete walls, inc.**  
148 BRICK CHURCH RD., LEOLA, PA 17540

(717) 656-2016



## WINTERNATIONALS

MARCH 10-11-12

FRI-SAT-SUN

- Supercharged Alcohol Burning
- ☆ 2 WHEEL DRIVES
- Unlimited Horsepower
- ☆ 4 X 4 TRUCKS
- Multiple Engine
- ☆ HOT ROD TRACTORS
- Special Attraction
- ☆ HEAVYWEIGHT HORSES
- Sunday 2 p.m. only

Difference Classes Each Performance

- ☆☆ MONSTER ☆☆☆ TRUCKS

MOST MONSTER TRUCKS EVER AT WINTERNATIONALS - INCLUDING -

TWO GIANT CAR CRUSHING MONSTER TANKS They're Half Truck-Half Tank

☆ TRUCKS & TRACTORS WITH OVER 2000 HP

LARGE ARENA FARM SHOW COMPLEX

**HARRISBURG**

**IT'S BACK!!! BIGGER & BETTER!!**

**BUY EARLY & SAVE**  
TICKETS ON SALE FEB 27  
HARRISBURG FARM SHOW  
COMPLEX BOX OFFICE  
717-783-6513

MUSIC MERCHANTS, MAILMANS (YORK),  
RAINBOW ENTERTAINMENT in Strawberry  
Square and Enola AAA 4 X 4 in Allentown  
RV FOUR WHEEL DRIVE in Mechanicsburg

**CHILDREN HALF PRICE**  
12 and under Friday & Sunday ONLY

MAIL ORDER	
FRI MARCH 10 8 P M	How Many
Adults _____	at \$10 = \$ _____
Child _____	at \$ 5 = \$ _____
SAT MARCH 11, 8 P M	
Adults _____	at \$12 = \$ _____
SUN MARCH 12 2 P M	
Adults _____	at \$10 = \$ _____
Child _____	at \$ 5 = \$ _____
Postage & Handling \$ 1.00	
Total Enclosed \$ _____	

PHONE NUMBER \_\_\_\_\_  
Mail with self addressed stamped envelope to  
PRO SHOWS WINTERNATIONALS  
P O BOX 5119 HARRISBURG PA 17110

**(717) 783-6513**

**IF YOU WOULD LIKE DISCOUNTED GROCERIES DELIVERED TO YOUR HOME PLEASE CALL Chris Gensemer 215-267-4175 or write RD 1, Ream Rd. Ephrata, PA 17522**

**Reemay Polyester TOBACCO BED COVERS**

in 2 and 3 yd. widths  
Also a small stock of covers of real cotton.  
We will ship.

Electro Warmth BED WARMERS

1989 CALENDAR PLATES

English Staffordshire A collector's item  
We will ship.

Watch for large complete ad in PENNSAVER, Feb. 28

**W.L. ZIMMERMAN & SONS**

Thurs. till 8, Fri. till 9  
Store opens 7:30 a.m.  
1-717-768-8291  
Intercourse, PA 17534