

**Public Auction Register**

Closing Date Monday 5:00 P.M.  
of each week's publication

**NOVEMBER**

FRI. NOV. 3 - 9AM Equipment Sale at New Holland Sales Stables Inc., New

**DEALER IN ALL KINDS OF LIVESTOCK**

Also Crippled & Down Cattle

**MARLIN S. IRWIN**

Quarryville, PA  
PH: 717-786-3016

**PUBLIC AUCTION**

**DAIRY HEIFERS, HOG EQUIPMENT & MODERN FARM EQUIPMENT**

Having sold farm will sell located at 2110-D Pleasant View Rd., Doubs, Md. From the north, take Rt. 15 to Mountville Rd., then Ballenger Creek to Doubs Rd. to Pleasant View Rd. to Sale. From the south, take Rt. 28 to Pleasant View Rd. to Sale.

**THURSDAY, MARCH 2, 1989 AT 9:30 A.M.**

Int. 1026 Hydro Diesel; Int. 350 Utility gas; Int. 300 Utility w/loader; Case 1740 Diesel unloader w/bucket & tines; 1960 Int. grain truck w/dump (new engine). Buffalo Springfield 10T wet roller w/p.s. 6 cyl, ga.

NH 273 baler kicker; NH 36 flail chopper; Gehl 120 feed grinder; MM 6-row corn planter; McCormick 16 disc drill; NH 479 haybine; PTO potato digger; NH 21 ft. mow elevator; Little Giant 40 ft. elevator; NI 214 manure spreader; Allis Chalmers 10 ft. offset disc; J.D. 4 bottom hydro reset plow; small offset disc, 4 bale throw wagons.

3 pt. carry-all; 3 pt. round bale mover; 3 pt. snow blower; Shaver post drive; 2 pt. 2 bottom plow; 3 pt. 1 bottom plow; 2-3 pt. 2 bottom plows; 3 pt. lay off plow; 10 ft. spring tooth harrow; 6 ft. cultipacker; 10 ft. cultipacker; NI rake/edder; J.D. rake; gravity box on running gear; running gear; hammermill; 3 pt. side mower; 3 pt. 7 ft. scraper.

16 farrowing pens w/waterers & feeders; heat mats for farrowing pens; 1 21'x5' nursery (4 pens) w/waterers; 6 5'x8' pens w/waterers & feeders; heat lamps; misc. metal feed bins (5-4 footers & 3-8 footers); 1 L-B White gas heater; 4 port. new nursery pens w/stainless steel feeders; 40 sheets 5'x7' 3 gauge hog mats (new); 2 fiberglass AAA exhaust fans 1/2 h.p. (new); 6-20" exhaust fans 1/4 h.p. (new); 5 automatic shutters (new); round pig feeder; Better Bilt slurry pump; slurry tank on running gear w/20" tires; 14 ft. alum. van box.

2 good saddles; 4-3 ft. metal doors & jambs (new), engine stand; 4 portable cow feeders on rubber; wheelbarrows; 10 calf hutches; port. loading chute; 8 h.p. Sears roto-tiller; 5000 watt generator; 16,000 lb. hydro winch; oak sawmill lumber; approx. 700 bales alfalfa; 700 bales mixed hay.

1982 Mercury Lynx-L, Md. inspected, 84,000 miles.

**50 HEAD OF HOLSTEIN DAIRY HEIFERS**

Consisting of 20 head bred to freshen in April & May; 30 head open from 250-550 lbs.; 1 Angus-cross bull. This is a nice group of locally born grade heifers. All are calfhood vac, dehorned, & extra teats removed. All heifers are bred to Angus-cross bull. Pregnancy examined & tested for interstate shipment. Loading chute available.

**NOTE:** Equipment is in excellent condition & ready for the field.

**SALE ORDER:** Small items; hog equipment; machinery, tractors, & trucks at 12:00; heifers.

**TERMS:** Cash or approved check. Not responsible for accidents. Lunch on premises.

**GEORGE & ANNA DAVIS, Owners**  
Ph: (301) 662-8309

**BISER AUCTION SERVICE**  
COMPLETE AUCTION & APPRAISAL SERVICE  
(301) 662-7424  
Robert C. Biser, Auctioneer  
George I. Lease, Auctioneer

**Dairy and Livestock Sales**

Holland, PA.

FRI. NOV. 10 - 1:30PM  
State Graded Feeder Pig Sale, Carlisle Livestock Market, Inc. Exit 12 Off I-81, Phone 717-249-4511.

FRI. NOV. 24 - 1:30PM

State Graded Feeder Pig Sale, Carlisle Livestock Market, Inc. Exit 12 Off I-81, Phone 717-249-4511

**DECEMBER**

FRI. DEC. 13 - 1:30PM  
State Graded Feeder Pig

Sale, Carlisle Livestock Market, Inc. Exit 12 Off I-81, Phone 717-249-4511.

FRI. DEC. 22 - 1:30PM  
State Graded Feeder Pig Sale, Carlisle Livestock Market, Inc. Exit 12 Off I-81, Phone 717-249-4511.

**SALE EVERY TUESDAY**

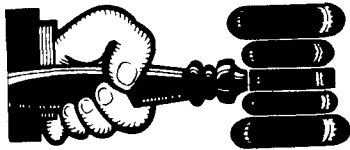
Graded Sale  
1st Tuesday each month  
2 P.M.  
Horse Auction  
2nd Saturday each month  
1 P.M.

**FAUQUIER LIVESTOCK EXCHANGE**

Marshall Va  
703-364 1566

**NOTICE**

To assure that your Public Sale appears in the Public Sale Section we must have your advertisement by 5 P.M. Tuesday of each week's publication.



**AUCTIONEER'S DIRECTORY**

**KLINE & KREIDER AUCTIONEERS**

COMPLETE PROFESSIONAL AUCTION SERVICE

**REAL ESTATE — FARMS & RESIDENTIAL**  
PERSONAL PROPERTY — ANTIQUES —  
FARM STOCK SALES — LIQUIDATIONS

**RANDAL V. KLINE**  
AUCTIONEER REALTOR  
717-733-1006

**LLOYD H. KREIDER**  
AUCTIONEER  
717-786-3394

**ROY E. GOOD, JR.**  
AUCTIONEER  
215-445-4309

**PROFESSIONAL Auctioneering**

**PAULE MARTIN**  
R D 1, Box 553  
Stevens, Pa 17578

**JOHN D STAUFFER**  
217 Andrea Dr  
Littitz, Pa 17543

Complete Auction Service - We assist you and advise you from the planning stages of your auction to the completion of your auction

For A Consultation In Your Home Call  
Paul (717) 733 3511 — John (717) 665 5099  
Licensed and Bonded

**LICENSED and BONDED AUCTIONEER**

**John C. Lapinski**

**A THOROUGH PROFESSIONAL AUCTION SERVICE**

We assist with planning, set-up & conclusion.

For a consultation call:

**TELEPHONE:**  
(215) 536-0514



Auctioneer:

Steve Petersheim:

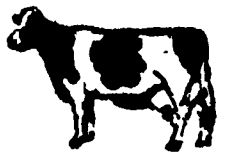


**COMPLETE AUCTION SERVICE**

**Antiques  
Household Goods  
Farm Equipment  
Real Estate**

Take Note - Our New Phone Number  
215-593-2828

**NEW HOLLAND SALES STABLES, INC.**



Located 12 Miles East of Lancaster, just off Rt. 23, New Holland, Pa.  
**SPECIAL DAIRY SALE CONSIGNMENTS**  
For  
**WEDNESDAY, MARCH 1, 1989**  
Helper Sale Starts At 11:00 A.M.

Herd of 20 head from Lackawanna County. Several just fresh, balance in all stages. All home raised. Sire Power breeding. Represented by John Wetmore.

\*\*\*\*\*

Also Selling

- \* 1 load fresh and springer cows consigned by Norman and David Kolb.
- \* 1 load fresh and springer cows consigned by Merle Brenneman.
- \* 1 load fresh and springer cows consigned by Marvin Eshleman.
- \* 1 load fresh and springer cows consigned by Raymond Smucker.
- \* 1 load fresh cows consigned by Dale Hostetter.
- \* 1 load fresh cows consigned by Albert Albright.

**PLUS MANY MORE CONSIGNMENTS**

For More Information Contact:

**Abe Diffenbach 225L**  
717-354-4341-Barn

**Norman Kolb**  
717-397-5538

**PUBLIC SALE TUESDAY, MARCH 7, 1989**

9:30 A.M.

Located four miles east of Intercourse, one mile southwest of White Horse, 1/2 miles south of Route 340 along Millwood Road and Pequea Creek, Lanc. Co. Pa.

**Livestock**

One pair of Belgium mares, 4 years old bred to Sorrel Jack; Roan Horse; Sorrel Horse; Black Mule.

**Farm Equipment**

International "660" Diesel Tractor, On Steel; White Horse- 2-Way Hyd. Plow; Farmec 30' Elevator With Hyd. System And Motor; Pequea Tedder; New Holland #455 Mower, With Hyd. System; Papec 16" Ensilage Cutter.

Corn Binder and Carrier With 8 h.p. Briggs Engine; New Idea Grimper With "AC" Power Unit; International "430" Baler; McD #7 Grass Mower; Two Steel Wheel Wagons With 16' Beds; NI #206 Manure Spreader; Field Sprayer With Briggs Engine; Portable Fan With "AC" Power Unit.

John Deere 20 Disc Harrow; New Idea Transplanter; John Deere #999 Corn Planter; Steel Roller; New Idea 4-Bar Side Rake.

Four McD Riding Cultivators; Two Fore Trucks; Three Section Spring Harrow; Cultipacker With Sprocket Teeth; Spike Harrow.

Corn Binder With Carrier For Parts; McD 2 Way Plow, For Parts; Manure Spreader, Endgate; Hammermill; Two Pump Jacks; 2-12 Hole Hog Feeders; Three Minnich Bale Boxes; 7000 Tobacco Lath; Russel Newberry 2 Cyl. Diesel; Ice Box; Silo Pipe; 32' Wood Ext. Ladder; Fuel Tank With Pump; Spring Wagon; Market Wagon; Portable Self Catching Headgate.

Firewood- Approximately 12 Ton Ear Corn, 8 Ton 2nd & 3rd Cutting Hay.

**Household Items**

Combination Cupboard; Six Plank Bottom Chairs; 3 Pc. Bedroom Suite; Five Pressed Oak Chairs; Oak Dresser; Two Old Quilts; Butter Churn; Wooden Shutters; Kettle Furnace And Kettle.

Monarch Coal Stove; Suburban Wood Stove; Duo Therm Oil Space Heater; Single & Double Beds; Library Table; Wooden Desk Chair.

Singer Sewing Machine; Two Cream Separators; 6 Stainless Milk Buckets; Slate- Old Chimney Tops; Sausage Stuffer; Coal Oil Lamps; Wood Tub; Berry Boxes; Small Cedar Chest; Fisher Family Book; Valentine Cards; Depression Glass; Bavarian Vegetable Dishes; Crocks; Jugs; And Many Other Items.

Sale At 9:30 A.M.

Sale Order:

Small Items At Barn; Household Goods; Farm Equipment.

**JOHN E. STOLTZFUS, Owner**

Box 467, RD 1  
Gap, Pa. 17527

Roger Lloyd, Clerk  
Diffenbach's Auct. 225L

Lunch Available