

# Livestock Market and Auctions

## Lancaster Livestock Auction

Monday, Feb. 20, 1989  
Report Supplied by USDA

Cattle	Calves	Hogs	Sheep	Goats
Monday's Auction	1057	84	485	493 270
Last Monday's Auction	1019	107	443	530 249
Last Year's Auction	809	97	607	432 292

CATTLE: SLAUGHTER STEERS MOSTLY STEADY; SLAUGHTER HEIFERS STEADY TO WEAK; COWS STEADY; BULLOCKS AND BULLS FULLY STEADY. SUPPLY INCLUDED 69% SLAUGHTER STEERS, 10% SLAUGHTER HEIFERS, 14% COWS, AND 7% BULLS.

SLAUGHTER STEERS: HIGH CHOICE AND PRIME 2-4 1235-1450 LB. 75.50-77.60; FEW CHOICE AND PRIME 1-3 1200-1400 LB. 77.25-78.50, CHOICE 2-3, FEW 4 1100-1535 LB. 73.50-76.00, FEW 76.00-76.60; SELECT AND LOW CHOICE 2-3 1000-1350 LB. 70.00-74.00; FEW SELECT 2-3 1000-1300 LB. 66.00-70.00; CHOICE 1175-1550 LB. HOLSTEINS 62.50-67.75, SELECT 1100-1500 LB. 60.00-62.50.

SLAUGHTER HEIFERS: CHOICE 2-3 1000-1275 LB. 69.00-74.00, FEW CHOICE 2 74.50-75.50; SELECT 2-3 925-1200 LB. 67.00-70.00.

COWS: BREAKING UTILITY AND COMMERCIAL 2-3, BULK 49.00-50.50, HIGH DRESSING 50.75-52.50; CUTTER AND BONING UTILITY 1-2, LOW DRESSING 47.00-48.50, BULK 48.50-50.50.

BULLOCKS: CHOICE 1-3 1150-1450 LB. 64.50-67.75, COUPLE 70.00-73.00; SELECT 1-2 1000-1300 LB. 62.00-65.00.

BULLS: YIELD GRADE 1 1350-2200 LB. 64.00-69.50, SEVEN HEAD 70.00-76.00; YIELD GRADE 2 1050-1550 LB. 59.00-63.75, FEW LOW DRESSING 56.00-58.00.

VEAL CALVES: SMALL SUPPLY CHOICE AND PRIME VEALERS STEADY, HIGH GOOD AND LOW CHOICE 5.00 HIGHER; SLAUGHTER CALVES 5.00 HIGHER. DEMAND GOOD FOR HOLSTEIN BULLS TO RETURN TO FARM.

VEALERS: COUPLE PRIME 200-320 LB. 115.00-130.00; FEW CHOICE 180-320 LB. 100.00-115.00; HIGH GOOD AND LOW CHOICE 140-280 LB. 75.00-100.00, 80-110 LB. 75.00-90.00.

SLAUGHTER CALVES: GOOD AND CHOICE 320-450 LB. 75.00-85.00 RETURNED TO FARM: BULK 90-125 LB. HOLSTEIN BULLS 145.00-165.00.

HOGS: COMPARED TO LAST WEDNESDAY BARROWS AND GILTS 50 HIGHER; SOWS 2.00-2.50 HIGHER.

BARROWS AND GILTS: US 1-2 210-245 LB. 41.50-42.50; US 1 210-245 LB. 42.75-44.00; US 1-3 210-260 LB. 40.75-41.50; US 2-4 220-270 LB. 39.50-40.50, 285-350 LB. 35.00-39.00

SOWS: US 1-3 300-650 LB. 30.00-34.50.

SHEEP: SLAUGHTER LAMBS AND SLAUGHTER EWES FULLY STEADY WOOLED LAMBS: CHOICE AND PRIME 80-110 LB. 72.00-82.00, 110-140 LB. 65.00-72.00; FEW GOOD AND CHOICE 60-80 LB. 75.00-85.00.

NEW CROP LAMBS: CHOICE AND PRIME 80-110 LB. 80.00-95.00, 60-80 LB. 90.00-110.00, 40-60 LB. 120.00-150.00.

SLAUGHTER EWES: UTILITY AND GOOD 20.00-40.00; YEARLINGS AND TWO YEAR OLDS 40.00-60.00.

GOATS: ALL GOATS SOLD BY THE HEAD. LARGE 50.00-100.00, MAINLY 60.00-75.00; MEDIUM FLESHY 50.00-60.00, THIN 40.00-50.00; SMALL MAINLY KIDS, FLESHY 35.00-45.00, THIN 25.00-35.00

## Vintage Livestock Auction

Tuesday, Feb. 21, 1989  
Report Supplied by USDA

Today	Cattle	Calves	Sheep	Goats
Last	881	808	0	0
Tuesday	889	813	0	2
Last Year	1036	872	0	0

CATTLE: SLAUGHTER STEERS STEADY TO 50 LOWER, INSTANCES 1.00 LOWER; SLAUGHTER HEIFERS MOSTLY STEADY; COWS FULLY STEADY; BULLS SCARCE. SUPPLY INCLUDED 51% SLAUGHTER STEERS AND 43% COWS.

SLAUGHTER STEERS: HIGH CHOICE AND PRIME 3-4 1200-1425 LB. 75.75-77.25; CHOICE 2 1100-1400 LB. 76.00-77.75, FIVE HEAD 78.00-79.00; CHOICE 2-3, FEW 4 1070-1480 LB. 72.75-75.85, FEW 76.00-76.50; SMALL SUPPLY CHOICE 3-4 1480-1570 LB. 71.00-72.50; SELECT AND LOW CHOICE 2-3 1100-1450 LB. 70.00-73.50, INCLUDING AROUND 70 HEAD 1100-1300 LB. RETURNED TO FEED AT 71.00-73.50; FEW CHOICE 1270-1425 LB. HOLSTEINS 63.25-68.00, FEW SELECT 1150-1425 LB. 56.00-60.00.

SLAUGHTER HEIFERS: CHOICE 2-3 1000-1200 LB. 70.50-72.85; SELECT 2-3 975-1100 LB. 67.00-70.00.

COWS: BREAKING UTILITY AND COMMERCIAL 2-3, BULK 49.25-52.50, HI DRESSING 52.50-53.75; COMMERCIAL 3-4, BULK 46.25-48.00; CUTTER AND BONING UTILITY 1-2, LO DRESSING 48.00-50.00, BULK 50.00-53.00, HI DRESSING 53.00-54.00; CANNER AND LOW CUTTER, LO DRESSING 43.00-46.50, BULK 46.50-47.50.

BULLS: YIELD GRADE 1-2 1250-1800 LB. 56.75-62.75, COUPLE YIELD GRADE 1 1500-1915 LB. 63.00-63.75.

VEAL CALVES: VEALERS STEADY, ALTHOUGH CHOICE SCARCE. SUPPLY INCLUDED 654 IN GRADED SALE OF WHICH 82% SOLD TO RETURN TO FARM.

VEALERS: FEW CHOICE 135-250 LB. 96.00-105.00; HIGH GOOD AND LOW CHOICE 110-220 LB. 75.00-90.00, 80-110 LB. 72.00-80.00; STANDARD AND LOW GOOD 60-85 LB. 55.00-70.00.

RETURNED TO FARM: 25 HEAD 120-125 LB. HOLSTEIN BULLS 133.00-138.00, 90 HEAD 110-115 LB. 153.00-156.00, 150 HEAD 95-105 LB. 160.00-161.00, 40 HEAD 90 LB., AND 20 HEAD 85 LB. 124.00; 80 HEAD SMALL FRAME 100-115 LB. 118.00-120.00 AND 40 HEAD 90-95 LB. 80.00; 30 HEAD 100-120 LB. HOLSTEIN HEIFERS 136.00, 30 HEAD 90-95 LB. 111.00-112.00 AND 35 HEAD SMALL FRAME 85-110 LB. 76.00-80.00.

SHEEP: NO MARKET TEST.  
GOATS: NO MARKET TEST.

## Lancaster Livestock Auction

Lancaster, Pa.  
Wednesday, Feb. 22, 1989

Wed's Auction	Cattle	Calves	Hogs	Sheep	Goats
Last	18	0	193	0	0
Last Wed's Auction	108	2	283	0	0
Last Year's Auction	109	16	301	0	4

CATTLE: Insufficient volume for a market test.

VEAL CALVES: No market test.  
HOGS: Compared to Monday barrows and gilts steady; sows not tested.

BARROWS AND GILTS: US 1-2 210-245 lb 41.50-42.25. US 1 210-240 lb 42.50-43.00. US 1-3 210-265 lb 41.00-41.50. US 2-4 Few 250-270 lb 40.00-40.75.

SHEEP: No market test.  
GOATS: No market test.

## Friend's Stockyard, Inc.

Accident, Md. 21520  
February 20, 1989

STOCK BULLS & STEERS (200 TO 400 LBS.) 74.00-90.00

STOCK HEIFERS 63.00-83.50  
SLAUGHTER STEERS GOOD TO CHOICE 70.00-74.00; MEDIUM TO GOOD 63.00-68.50.

HOLSTEIN STEERS HEAVY 57.00-64.00, LIGHT 48.00-52.75

SLAUGHTER HEIFERS GOOD TO CHOICE 67.50-70.50; MEDIUM TO GOOD 60.00-66.00

BULLS HEAVY 57.50-63.25, LIGHT 48.00-57.00.

COWS-- FEW HIGH DRESSING UP TO 54.00; UTILITY (HOLSTEIN) 47.00-53.00, CANNERS 41.50-50.00, COMMERCIAL TO GOOD 40.00-47.00, CULL COWS 40.00

VEALS GOOD TO COICE 80.00-100.00, MEDIUM TO GOOD 70.00-81.00

BOB CALVES MEDIUM TO GOOD 70.00-81.00

HOLSTEIN BULL CALVES RETURN TO FARM (100 TO 120 LB.) 125.00-160.00

HOLSTEIN HEIFER CALVES RETURN TO FARM (100 TO 120 LB.) 80.00-96.00

HOGS TOP QUALITY 41.00-42.00, HEAVY 39.00-41.00; LIGHT 30.00-38.50.

SOWS 25.00-32.25  
MALE HOGS 23.00-27.00

LAMBS 60.00-69.50, FEEDER LAMBS 60.00-74.00

SHEEP 20.00-28.00.

EGGS LARGE: 70-76 PER DOZ., MEDIUM, NONE AVAIL., SMALL, NONE AVAIL.

## New Holland Livestock

New Holland, Pa.  
Thursday, Feb. 23

Today	Cattle	Calves	Sheep	Goats
Last Thursday	963	517	85	25
Last Year	773	480	80	134

CATTLE: SLAUGHTER STEERS 1.00-2.00 HIGHER; SLAUGHTER HEIFERS 1.00-1.50 HIGHER; COWS 1.00 HIGHER, INSTANCES 1.50 HIGHER; BULLS AND BULLOCKS MOSTLY STEADY. SUPPLY INCLUDED 42% SLAUGHTER STEERS AND 49% COWS.

SLAUGHTER STEERS: HIGH CHOICE AND PRIME 2-4 1240-1450 LB. 77.00-78.10, FOUR HEAD 79.10-80.25; CHOICE 2-3, FEW 4 1100-1450 LB 74.85-77.10, FEW 3-4 1500-1650 LB 74.00-76.50, FEW CHOICE 2-3 1040-1075 LB 73.85-76.10; SMALL SUPPLY CHOICE 4 1200-1475 LB 72.50-74.50; SELECT AND LOW CHOICE 2-3 1050-1500 LB 70.75-75.00, CHOICE 1040-1650 LB HOLSTEINS 63.00-69.50, COUPLE HIGH CHOICE AND PRIME 70.50-72.00; SELECT 1200-1450 LB 57.00-62.50.

SLAUGHTER HEIFERS: CHOICE 2-3 1000-1375 LB 70.00-75.75, COUPLE 75.85-76.85; SELECT 2-3 950-1200 LB 65.00-70.00.

COWS: BREAKING UTILITY AND COMMERCIAL 2-3 BULK 50.00-53.00, FEW HI DRESSING 53.00-55.75; COMMERCIAL 3-4 BULK 48.00-50.00; CUTTER & BONING UTILITY 1-2 LO DRESSING 48.25-50.00, BULK 50.00-54.00, HI DRESSING 54.00-56.00; CANNER AND LOW CUTTER LO DRESSING 44.00-45.50, BULK 45.50-48.50.

BULLOCKS: FEW CHOICE 2-3 1175-1325 LB 66.50-70.25; SELECT 1-2 1100-1450 LB 61.50-65.00.

BULLS: YIELD GRADE 1 1500-2000 LB 62.50-67.50; YIELD GRADE 2 1050-1550 LB 57.50-62.50.

VEAL CALVES: VEALERS STEADY. DEMAND GOOD FOR HOLSTEIN BULLS TO RETURN TO FARM.

VEALERS: CHOICE 140-360 LB 96.00-102.00, COUPLE 107.00-113.00, HIGH GOOD AND LOW CHOICE 140-400 LB 75.00-92.00, 80-115 LB 70.00-80.00; STANDARD AND LOW GOOD 60-85 LB 65.00-70.00.

RETURNED TO FARM: BULK 95-125 LB HOLSTEIN BULLS 135.00-165.00, FEW 165.00-169.00; SMALL FRAME 95-105 LB 90.00-130.00.

SHEEP: SLAUGHTER LAMBS AND SLAUGHTER EWES STEADY.

WOOLED LAMBS: FEW GOOD TO LOW CHOICE 80-110 LB 68.00-75.00.  
NEW CROP LAMBS: CHOICE 30-50 LB 118.00-129.00, 50-75, LB 90.00-120.00, FEW 120.00-160.00

SLAUGHTER EWES. FEW UTILITY AND GOOD 24.00-40.00

GOATS ALL GOATS SOLD BY THE HEAD. LARGE 65.00-79.00, COUPLE 93.00-96.00, MEDIUM 47.00-60.00; FEW SMALL 36.00-40.00.

## Lancaster Weekly

Lancaster, PA  
February 24, 1989

	CATTLE CALVES
THIS WEEK	3100 1410
LAST WEEK	2998 1405
LAST YEAR	3142 1593

CATTLE: Slaughter steers 50-100 higher, instances 1.50 higher, slaughter heifers 50-1.00 higher; cows closed 1.00-3.00 higher; bullocks and bulls fully steady. Supply included 51% slaughter steers, 6% slaughter heifers, 32% cows, 4% bulls, with the balance feeders

SLAUGHTER STEERS High Choice and Prime 2-4 1250-1450 lb closed at 77.00-78.10, 10 head Choice and Prime 2-3 1125-1400 lb 78.50-80.25, Choice 2-3 few 4 1100-1450 lb 74.50-77.10, few 3-4 1480-1650 lb 73.50-76.50, few mostly 4 1200-1450 lb 71.50-74.50, Select to low Choice 2-3 1050-1500 lb 70.00-75.00, few Select 2-3 1000-1300 lb 66.00 70.00, Choice 1140-1650 lb Holsteins 62.50-69.50, couple High Choice and Prime 70.50-72.00, Select 1100-1500 lb 56.00-62.50.

SLAUGHTER HEIFERS Choice 2-3 1000-1375 lb 70.00-75.75, few Choice 2 75.50-76.85, Select 2-3 925-1200 lb 65.00-70.00.

COWS: LOW DRESSING BULK HIGH DRESSING Breaking Utility and Commercial 2-3 49.50-53.00 Few 53.00-55.75. Commercial 3-4 47.00-50.00. Cutter and Boning Utility 1-2 48.00-50.00 50.00-54.00 54.00-56.00. Canner and low Cutter 43.00-46.00 46.00-48.50.

BULLOCKS: Choice 1-3 1150-1450 lb 64.00-68.00, couple 69.00-73.00, Select 1-2 1000-1450 lb 61.50-65.00.

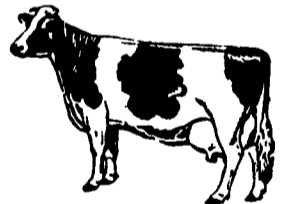
BULLS Yield grade 1 1350-2200 lb 62.50-69.50, seven head 70.00-76.00, yield grade 2 1050-1550 lb 58.00 63.75, few low dressing 56.00-58.00

VEAL CALVES Vealers steady, instances 5.00 higher, slaughter calves steady. Demand good for Holstein bulls to return to farm.

VEALERS: Couple Prime 200-320 lb 113.00-130.00, Choice 140-360 lb 96.00-105.00, few 108.00-115.00, high Good and low Choice 140-400 lb 75.00-95.00, 80-115 lb 72.00-80.00, Standard and low Good 60-85 lb 55.00-70.00

SLAUGHTER CALVES: Good and Choice 320-450 lb 75.00-85.00

RETURNED TO FARM BULK 90-125 lb Holstein bulls 133.00-165.00, few 165.00-169.00, small frame 90-115 lb 80.00-125.00 Few 100-120 lb Holstein heifers 136.00, 30 head 90.95 lb 111.00-112.00, 35 head small frame 85-110 lb 76.00-80.00



**Open 24 hours a day**  
**365 days a year**  
**(717) 394-2611**

**LANCASTER STOCK YARDS**

**AUCTIONS**

**MONDAY**  
9:00 A.M. —Slaughter Bulls, Heifers, Steers, Cows  
10:00 A.M. —Goats, Veal Calves, Lambs  
12 Noon —Slaughter Hogs

**WEDNESDAY**  
8:00 A.M. —Slaughter Hogs  
10:00 A.M. —Slaughter Bulls, Heifers, Steers, Cows  
11:00 A.M. —Veal Calves, Lambs

**FRIDAY**  
11:00 A.M. —Stocker and Feeder Cattle

**SATURDAY**  
8:00 A.M. —Slaughter Hogs

**Next Feeder Cattle Sale**  
**Fri., March 3 at 11:00 A.M.**

**LANCASTER STOCKYARDS, INC.**  
1147 Lititz Pike Lancaster, Pennsylvania 17601  
Serving The Community For 90 Years

**VINTAGE SALES STABLES, INC.**

**Sale Every Tuesday 10:30 A.M.**

**Slaughter Cattle Auction - Steers, Bulls, Heifers, Cows, Feeder Cattle.**

Get calves in early. We start to grade and weigh at 2:00.

**Business Phone 717-768-8204**  
**Home Phone 215-458-8518**

**L. Robert Frame, Manager**  
**Box 100 Paradise, PA**  
10 miles East of Lancaster on Rt. 30

**B&R CATTLE CO.**  
RD 1, Marietta, PA 17547  
Office Phone: (717) 653-8164  
Specializing In Stockers & Feeders  
**JOHN BOWMAN**  
Ph (717) 653-5728  
**RON RANCK**  
Ph (717) 656-9849

**LEBANON VALLEY LIVESTOCK MARKET, INC.**  
1 mile East of Fredericksburg along Rt. 22  
**PHONE JONESTOWN 865-2881**

Flea Market Auction every Tuesday at 12:30. Tools, Eggs, Produce, etc.  
Buyers & Sellers Welcome

**HAY, STRAW & CORN — SALE —**  
Every Friday At 11 AM

**GREEN DRAGON MARKET & AUCTION**  
RD No. 4 Ephrata, Pa. 717-738-1117  
1 mile North of Ephrata on N. State St.  
Out of Staff Buyers - Cash or Certified Check Only