



**Virginia Weekly**  
Richmond, Va.

Thurs. Feb. 9-Wed. Feb. 15, 1989

REVIEW IN VIRGINIA MARKETS IN REVIEW: FEB. 9-15, 1989. FEEDER STEERS AND HEIFERS IN VIRGINIA WERE 50 CENT TO \$7.00 LOWER AS MIDWEST PRICES WERE \$3.75-5.75 HIGHER.

SLAUGHTER STEERS AND HEIFERS IN VIRGINIA WERE STEADY TO \$1.00 LOWER AS MIDWEST PRICES WERE STEADY TO \$1.50 LOWER.

COWS AND BULLS IN VIRGINIA WERE UNEVEN, \$2.00 HIGHER TO \$3.00 LOWER WHILE MIDWEST

PRICES WERE \$4.00 LOWER. BEEF PRODUCTION WAS 4 PERCENT BELOW A WEEK AGO AND 3 PERCENT BELOW A YEAR AGO. AVERAGE DRESSED WEIGHTS WERE 14 POUNDS HEAVIER THAN LAST YEAR.

VEAL AND CALF MOVEMENT THIS WEEK WERE AT A MINIMUM THIS WEEK AT BOTH THE LOCAL AND NATIONAL LEVEL.

LAMB PRICES IN VIRGINIA WERE \$3.00-10.00 HIGHER AS MIDWEST PRICES WERE STEADY TO \$1.00 HIGHER. LAMB SLAUGHTER WAS 1 PERCENT BELOW A WEEK AGO BUT 6 PERCENT ABOVE A YEAR AGO. AVERAGE DRESSED WEIGHTS WERE 3 POUNDS HEAVIER THAN LAST YEAR.

SLAUGHTER HOGS IN VIRGINIA WERE 50 CENT TO \$1.00 LOWER AS MIDWEST PRICES WERE STEADY TO \$1.00 LOWER. FRESH PORK PRICES WERE MOSTLY STEADY EXCEPT

HAMS WHICH WERE STEADY TO \$2.50 LOWER. PORK PRODUCTION WAS LESS THAN 1 PERCENT BELOW A WEEK AGO BUT 9 PERCENT ABOVE A YEAR AGO. AVERAGE DRESSED WEIGHTS WERE THE SAME AS LAST YEAR.

THE VIRGINIA DIRECT HOG MARKET CLOSED 50 CENT LOWER TO \$1.50 HIGHER COMPARED TO LAST WEDNESDAY'S TRADING. BARROWS AND GILTS; COUNTRY PLANTS US 1-3 200-250 LBS 36.50-42.00 --- US 1-2 210-250 LBS --- HIGH YIELDING 40.00-42.00 US 2-4 210-250 LBS --- 37.00-40.00 SOWS WERE \$27.00-35.00 AND BOARS \$18.00-25.00

SLAUGHTER STEERS AND HEIFERS 6% SLAUGHTER COWS 13%, SLAUGHTER BULLS 2%, SLAUGHTER CALVES AND VEALERS 1%, FEEDER CATTLE UNDER 600 LBS 57%, OVER 600 LBS 21%.

PRICE RANGES FOR VIRGINIA WEEKLY AUCTIONS: SLAUGHTER CATTLE STEERS; CHOICE 2-3 1000-1150 LBS 71.25-74.00 CHOICE 2-3 1150-1300 LBS 70.85-73.00 CHOICE 2-3

1300 LBS & OVER 71.20-74.00 HEIFERS; CHOICE 2-3 900-1000 LBS 63.75-70.50 CHOICE 2-3 1000-1150 LBS 68.75-73.25 UTILITY & COMMERCIAL COWS 43.50-57.25 BULLS; 1-2 900-1300 LBS 53.00-64.25 1-2 1300-1600 LBS 51.50-62.00 1-2 1600 LBS & OVER 58.75-67.25 SLAUGHTER CALVES AND VEALERS VEALERS - HIGH CHOICE AND PRIME 100-250 LBS NO QUOTE THIS WEEK GOOD AND CHOICE 100-250 LBS 84.00-94.50 CALVES - GOOD AND CHOICE 250-500 LBS 80.00-92.00 SLAUGHTER LAMBS HIGH CHOICE & PRIME 95-125 LBS 65.00-67.00 FEW 58.00 SLAUGHTER HOGS US 2-4 200-250 LBS 37.00-40.00 SOWS US 1-3 300-500 LBS 25.50-34.00 500 LBS & OVER 31.50-36.00.

FEEDER CATTLE STEERS; MEDIUM 1 HEIFERS; MEDIUM 1 200-300 LBS 95.00-114.00 FW137.00 300-400 LBS 80.00-95.00 300-400 95.00-111.50 400-500 73.00-87.50 400-500 88.50-105.00 500-600 67.50-80.50 500-600 85.00-97.00 600-700 62.75-74.50 600-700 72.00-84.00 700-800 63.00-72.00 700-800 73.00-80.00 800-900 65.00 800-900 65.00-74.00.

**Northern Virginia Area Livestock Summary**

Staunton Union & Marshall (Fauquier), Va.

Tuesday, February 14, 1989

ALL TRENDS COMPARED TO LAST TUESDAY.

SLAUGHTER HOGS 30 HEAD - BARROWS AND GILTS 1.00 HIGHER. BARROWS AND GILTS US 2-4 200-250 LBS 40.00 3-4 250-300 LBS 38.00.

SLAUGHTER CATTLE 110 HEAD - SLAUGHTER COWS AND SLAUGHTER BULLS STEADY.

SLAUGHTER COWS 97 HEAD CUTTER & BNG UTILITY 1-3 44.00-55.75 BRKG UTILITY & COMM 2-4 44.00-53.00 CANNER & LOW CUTTER 1-2 39.00-48.75.

SLAUGHTER BULLS 13 HEAD - 1-2 900-1300 LBS --- 1-2 1300-1600 LBS 56.50-62.00 1-2 1600 LBS & OVER 62.00-62.50.

LAMBS 170 HEAD - SLAUGHTER LAMBS STEADY. HIGH CHOICE AND PRIME 95-125 LBS 65.00-67.00 CHOICE 85-125 LBS 60.00 SLAUGHTER EWES ALL GRADES 15.00-28.00 SLAUGHTER RAMS ALL GRADES 20.00.

FEEDER CATTLE 130 HEAD - TOO FEW TO REPORT ON ANY CLASS.

COWS RETURNED TO FARMS 55 HEAD; M&L-1, 4-8 YR OLD 470.00-730.00 PER HEAD. COWS WITH CALVES AT SIDE 97 HEAD; M&L-1, 4-8 YR OLD WITH CALVES 630.00-855.00 PER PAIR. BABY CALVES RETURNED TO FARMS 43 HEAD NEWBORN TO 4 WK OLD 40.00-125.00 PER HEAD. OVER 100 LBS 100.00-140.00 PER CWT.

STATE GRADED FEEDER CATTLE 347 HEAD SOLD AT MARSHALL (FAUQUIER) STEERS; MED.&LARGE 1 SMALL 1 MED.&LARGE 2 300-400 99.00 --- 400-500 96.00-96.50 --- 500-600 84.75-86.00 82.00 --- 600-700 74.00-86.75 76.50 --- 700-800 76.50-81.75 72.00 74.50 800-900 74.00-80.50 --- 900-1100 69.00-72.00.

HEIFERS; MED.&LARGE 1 MED.&LARGE 2 400-500 79.50-81.00 70.50 500-600 77.00-80.00 71.50 600-700 70.00-75.00 --- 700-800 63.75-68.25 --- 800-900 64.50-64.75.

**Southwest Virginia Area Livestock Summary**

Wytheville, Va.

Tuesday, February 14, 1989

ALL TRENDS COMPARED TO LAST TUESDAY.

SLAUGHTER HOGS 28 HEAD - NO TRENDS REPORTED. BARROWS AND GILTS US 2-4 200-250 LBS 37.00.

SLAUGHTER CATTLE 57 HEAD - SLAUGHTER COWS MOSTLY STEADY.

SLAUGHTER COWS 55 HEAD CUTTER & BNG.UT. 1-3 47.00-53.50 BRKG.UT. & COMM. 2-4 47.00-50.00 CANNER & LOW CUTTER 1-2 35.00-47.50.

SLAUGHTER BULLS 2 HEAD; 1-2 1300-1600 LBS 58.00-59.75 LAMBS 50 HEAD - SLAUGHTER LAMBS 4.00 LOWER. HIGH CHOICE AND PRIME 95-125 LBS 58.00 SLAUGHTER EWES ALL GRADES 12.00-17.00 SLAUGHTER RAMS ALL GRADES 18.00.

FEEDER CATTLE 75 HEAD - NO TRENDS REPORTED. STEERS; MEDIUM 1 700-800 75.00 800-900 65.00-65.50 HOLSTEIN STEERS; MED.&LARGE 1-2 300-500 LBS 81.00; 500-700 LBS 75.00 700-900 LBS 64.50 HEIFERS; MED.&LARGE 1 300-400 91.00 FEEDER BULLS; MED. 1 SMALL 1 300-500 LBS 89.00 --- 500-700 LBS --- 79.50 BABY CALVES RETURNED TO FARMS 19 HEAD NEWBORN TO 4 WK OLD 80.00-157.50 PER HEAD.

**Peoria Sheep**

Peoria, Illinois

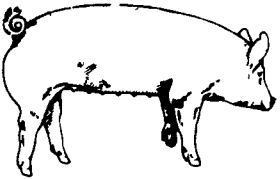
Tuesday, February 14, 1989

STATE MARKET NEWS FLASH. MIDSESSION AND CLOSE SHEEP: 100 TRADING MODERATE. NO RECENT PRICE COMPARISON ON SLAUGHTER LAMBS.

SHORN SLAUGHTER LAMBS: CONSIGNMENT CHOICE AND PRIME WITH #1 AND 2 PELTS 115 LBS. 64.00.

WOOLED SLAUGHTER LAMBS: CHOICE AND PRIME 95-120 LBS. 58.00-62.00.

**CRIPPLED AND DISABLED**  
**Cows, Steers & Bulls For Slaughter Under USDA Inspection**  
— Call Wayne Taylor —  
**717-866-6289**  
**215-286-9400**  
Lebanon, Berks, Lancaster & Chester Counties



**EMERY'S BUYING STATION**

**OPEN TO RECEIVE YOUR MARKET HOGS AT THE GREEN DRAGON MARKET RD 4, EPHRATA, PA 17522 1 MILE NORTH OF EPHRATA ON NORTH STATE STREET.**

**HOURS: MONDAY, TUESDAY, and WEDNESDAY 7:00 A.M. to 11:30 A.M.**

215-458-5677 Residence  
717-733-9648 Office

**YOU ARE PAID FOR YOUR HOGS IMMEDIATELY**

Ken & Lois Emery, Proprietors



**ATTENTION FARMERS**

**EVERY MONDAY HATFIELD PACKING CO. and MOYER PACKING CO.**

Will Receive Your Hogs and Cattle at the **DANVILLE LIVESTOCK MARKET** RD 4, Danville, PA

- We will receive your hogs from 8 AM to 12 Noon every Monday. Your hogs will be weighed and paid for immediately.
- We will also accept your sows & boars.
- Your cattle will be received from 12:30 to 5 P.M. We will either pay you for your cattle immediately or you may sell them dressed weight.
- There will not be a commission or yardage fee deducted from your check.
- You may call our office Monday morning and we will be able to tell you the base price for hogs for the day.

MELVIN M. LEHMAN - Owner  
Danville Buying Station  
Phone: 717-275-2880

**ATTENTION FARMERS**

The New Way To Market Your Livestock **HATFIELD AND MOYER PACKING CO. AND PACKING CO.** Will Receive Hogs Will Receive Cattle

At The **BLAIR-BEDFORD BUYING STATION** RD 1 Martinsburg, Pa

**MONDAYS** - Hogs 7:30 AM to 12 Noon  
Cattle & Calves 7:30 AM to 4 PM  
**THURSDAYS** - Cattle & Calves 7:30 AM to 4 PM

- No commission or yardage fees deducted from check
- Livestock weighed and paid for immediately
- You may call our office sale day for prices

**DALE R. HOOVER - Owner**  
Business 814-793-3077  
Residence 814-793-2657

**SWINE PRODUCTION SALES AND SERVICE**

Feeding Programs And Services To Meet Your Individual Needs

Computerized Record Keeping System



Supplying Farm Fresh Feeder Pigs

Marketing and Hedging Services

Marketing of Genesis Breeding Stock

Contracts Available

Developing Individual Financial Programs

Quality Products And Services - Working For YOU

419 West High Street  
Elizabethtown, PA 17022  
Elizabethtown (717) 367-1525  
PA Toll Free 1-800-468-5524

Shippensburg (717) 532-7845

**DON'T CALL US!**

IF YOU WOULD CONSIDER BUYING A BUILDING OVER THE PHONE!!!

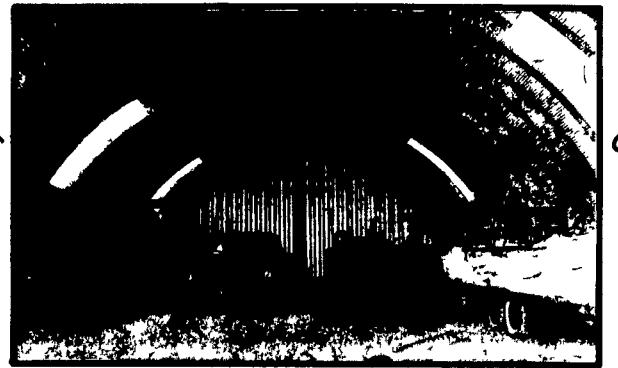
- Know who you're dealing with & insist on a detailed presentation of the product you're purchasing, regardless of how low the price is!

**\$\$\$ CHEAP CAN BE EXPENSIVE \$\$\$**

- Low prices can mean low quality, lack of service & no company history!

**BEWARE!!**

"MEET FACE TO FACE WITH THE PEOPLE YOU'RE DEALING WITH"



- 100% CLEAR SPAN:
- 100% MAINTENANCE FREE (MADE FROM GALVALUME)

- EASY TO ERECT:
- 20 YR. WARRANTY (BACKED BY THE MILL)

ASK ABOUT OUR WINTER DISCOUNTS!  
\$ SAVE THOUSANDS \$

ACT NOW!

**ATLANTIC BUILDING SYSTEMS INC.**  
Call TOLL FREE:

In NY: 800-942-1234

In US: 800-431-1338