

THE OLD FARMER'S ALMANAC

FEB. 20-26, 1989
Rain in February, temperate all year.

Birthdays of Glora Vanderbilt, Feb 20, 1924 Washington Monument dedicated Feb 21, 1885 Chopin born, Feb 22, 1810 Average length of days for the week 10 hours 56 minutes Thunder now means poor sugaring Anniversary of Grand Canyon Nat'l Park, Feb 26 A warm heart requires a cool head



Ask the Old Farmer: Do you know where or how the saying about cows lying down and imminent rain came from? E B R, N H
Same place where they had cows — they do, you know, and it does

Home Hints: To drive a nail without hurting your fingers, hold the nail between the teeth of a comb

OLD FARMER'S WEATHER FORECAST

New England: Sunny, seasonable and cold nights, snowstorm and more cold, finally clearing and milder It's a typical New England week in February
Greater New York-New Jersey: Clear and mild weather begins this week, a snowstorm at mid-week, then clearing and cold for the grand finale
Middle Atlantic Coastal: Clear and pleasant, how about that? A snowstorm follows, with cold temperatures to go along, then clearing and milder again
Piedmont & Southeast Coastal: Sun and showers begin these February days, rain, heavy in the south, then cooling Clear and warm to finish up

(All Rights Reserved, Yankee Publishing Incorporated, Dublin, NH 03444)

Leesport Livestock Auction
Leesport, Pa.
Wednesday, February 15, 1989
Report Supplied by PDA
CATTLE 211...PDA... Supply included 26 head feeder cattle
Compared to last Wednesday's market: Slaughter steers strong to \$2 higher; Cows \$1.50 to \$2.50 lower. Few Choice sl. steers 72.50-73.50, couple 75.75, Select 67.25-73.00; few High Choice & Prime 1400/1670 lbs. holsteins 69.25-70.50, Choice 1375/1670 lbs. 67.50-70.50, few Select 900/1400 lbs. 62.00-68.00. Few Choice sl. heifers 67.00-69.50, one 70.85, few Select 60.75-67.50, few Standard 53.75-58.25. Breaking Ut. & Commercial sl. cows 47.75-52.50, mostly 48.75-51.25, low dressing 45.00-47, Cutter & Bon. Utility 46.50-51, few 52.00, few Canner & Low Cutter 44.25-46, Shells down to 41.50. Couple Choice sl. bullocks 68.50&69, few Select & Choice holsteins 58.50-64.75. Few Yield Grade No. 1, 1450/1700 lbs. sl. bulls 59.75-63.75. FEEDER CATTLE: Few Medium Frame No. 2, 660/950 lbs. steers 69.25-71.00. Few Med. & Large Frame No. 1, 500/885 lbs. heifers 59.00-72.00. Few Med. & Large Frame No. 1, 380/700 lbs. bulls 57.00-71.00, few Large #2, 435/515 lbs. 59.00-67.00.
CALVES 135. Vealers \$2 to \$3 higher.

Couple Choice 102.00&105.00, High Choice one 117.50, one Good 100.00, Standard & Good 85/100 lbs. 72.00-75.50, few 70/80 lbs. 69.00-72.50, few Utility 55/90 lbs. 45.00-60.00. Farm Calves: Holstein Bulls 90/130 lbs. 137.50-153.00, some down to 85.00, 70/90 lbs. 74.00-95.00; few Hol. Heifers 95/110 lbs. 92.50-107.50. Few Good & Choice 380/625 lbs. slaughter calves 59.00-72.00.
HOGS 281...Barrows and gilts .75 to \$1.50 higher. US No. 1-2 230/255 lbs. 43.25-44.25, one small lot 44.50, 1-3 205/250 lbs. 40.60-42.75, few 43.25, few 2-3 270/280 lbs. 39.75-41, one lot 2-4 270 lbs. 36.75, few 1-3 145/185 lbs. 28.00-33.00. Sows steady to weak. US No. 1-3 330/550 lbs. sows 31.00-34.25, one 35.25, 2-3 425/660 lbs. 29.50-31.50, few Medium 325/550 lbs. 22.50-31.00. Few Boars 23.00-25.00.
FEEDER PIGS 261...Lot US No. 1-3 18 lbs. feeder pigs 17.00 per head; lot 1-3 20 lbs. 80.00, 25/45 lbs. 68.00-79.00, 45/65 lbs. 55.00-62, lot 84 lbs. at 43.00; 2-3 35/60 lbs. 39.00-51.00, lot Utility 50 lbs. 25.00 --- all per hundredweight.
SHEEP 33...Few Choice 55/85 lbs. woolled lambs 78.00-82.50, few 45/50 lbs. 20.00-25.00, couple 35/40 lbs. 155.00&190.00; few Good 65/70 lbs. new crop 62.00-70.00. Few Slaughter sheep 15.00-37.00, lot Yearlings 67 lbs. at 50.00
GOATS 10...Large adult 45.00-66.00, one Kid 34.00 --- all per head.

Keister's Middleburg Auction

Middleburg, Pa.

Tuesday, February 14, 1989

Report Supplied by PDA

CATTLE 467...PDA...Compared with last week's market: Slaughter steers steady to Prime slaughter steers 76.00-80.10, Choice 1000/1500 lbs. 74.00-77.75, Select 65.00-71.75; Choice holsteins 65.00-68.75, few Select 62.75-63.50, few Standard 60.00-62.00. High Choice & Prime sl. heifers 71.00-75, one 75.75, Choice 68.00-73.50. Breaking Utility & Commercial sl. cows 48.50-54.00, Cutter & Boning Utility 49.50-54.75, couple 56.00, Canner & Low Cutter 45.25-50.00, Shells down to 40.00. Couple Choice sl. bullocks 66.25 & 67.75. Yield Grade No. 1, 1100/2480 lbs. sl. bulls 60.00-67.00, one 11930 lbs. 73.75. FEEDER CATTLE: Medium & Large Frame No. 1, 350/700 lbs. steers 67.00-85.00. Med. & Large #1, 400/650 lbs. 64.00-74.00.
CALVES 185...Few Choice vealers 94.00-114.00, few Good 90.00-95.00, Standard and Good 70/95 lbs. 80.00-92.00, few 96.00, few Utility 60/85 lbs. 65.00-76.00. Farm Calves: Holstein Bulls 90/135 lbs. 92.00-154, mostly 110.00-145.00; Hol. heifers 90/115 lbs. 80.00-116.00.
HOGS 506...Barrows and gilts steady to .50 lower. US No. 1, 220/245 lbs. 43.00-44.25, No. 1-2, 215/250 lbs. 42.25-43.00, 1-3 200/250 lbs. 41.50-42.25, 2-3 190/270 lbs. 38.00-41.50. US No. 1-3 280/600 lbs. sows 30.00-32.50, couple to 35.00, 2-3 275/575 lbs. 25.00-30.00. Boars 23.00-27.25.
FEEDER PIGS 397...US No. 1-3 20/35 lbs. feeder pigs 18.00-29.00, 35/50 lbs. 29.00-36.00, lot 100 lbs. 45.50 --- all per head; 45/55 lbs. 60.00-71.00 Cwt.
SHEEP 8...Few Choice 110/130 lbs. wool slaughter lambs 64.00-80.00.
GOATS 5...Few Large 38.00-68.00 --- all per head.

41.00-46.50, Shells down to 35.00. Individual Choice sl. bullock at 70.00. Yield Grade No. 1, 1300/2210 lbs. sl. bulls 58.00-66.10, No. 2 1000/1400 lbs. 46.00-55.00. Feeder Cattle: Medium Frame No. 1, 300/550 lbs. steers 74.00-87, couple 250 lbs. at 95.00. Medium Frame No. 1, 300/600 lbs. heifers 59.00-70.00
CALVES 109...Couple Choice vealers 101.00&107.00, few Good 85.00-95.00, Standard and Good 90/120 lbs. 71.00-87.00, 60/85 lbs. 62.00-74.00, few Utility 50/60 lbs. 34.00-50.00. Farm Calves: Holstein Bulls 90/125 lbs. 100.00-146.50.
HOGS 224...
Barrows and gilts steady to weak. US No. 1-2 220/255 lbs. 40.00-40.60, two lots 41.00&41.35, 1-3 215/260 lbs. 39.50-40.10, 2-3 215/265 lbs. 38.50-39.50, 2-4 255/280 lbs. 36.50-37.00. US No. 1-3 310/550 lbs. sows 36.00-40.00, 2-3 300/600 lbs. 30.00-36.00. Few Boars 27.00-30.00.
FEEDER PIGS 0...No Market Test.
SHEEP 0...No Market Test.
GOATS 1...Medium 40.00 - per head.

40.75-41.25, 1-3 215/255 lbs. 39.50-40.85, 2-3 230/260 lbs. 38.85-39.50, small lot 270 lbs. 37.25, 1-3 170/210 lbs. 35.00-38.50. US No. 1-3 340/675 lbs. sows 35.50-49, one 51.00. Boars 20.00-34.00.
FEEDER PIGS 19...US No. 1-3 40/65 lbs. feeder pigs 20.00-31.00 --- all per head.
SHEEP 55...Choice 85/110 lbs. wool slaughter lambs 66.00-72.00, small lot 75 lbs. 81.00, small lot 115 lbs. 60.00. Good & Choice 55/70 lbs. feeder lambs 64.00-75.00. Few Slaughter ewes 19.00-28.00.
GOATS 15...Medium and Small 20.00-39.00.

New Wilmington Livestock Auction

N. Wilmington, Pa.

Monday, February 13, 1989

Report Supplied by PDA

CATTLE 265...PDA...Compared with last Monday's market: Slaughter cows fully \$1 higher. Few Choice sl. steers 72.00-73.75, few Select 67.00-68; few Select & Choice holsteins 65.00-68, few Standard 60-66.50, few Utility 51.50-58.00. Few Choice sl. heifers 69.00-73.75, couple yield grade #5, 67.50, few Select 65.25-66, few Standard 57.25-59.50. Breaking Utility & Commercial sl. cows 49.00-53, few 55.00, Cutter & Boning Utility 46.00-51.25, Canner & Low Cutter 40.00-46.25, Shells down to 29.00. Few Standard sl. bullocks 56.50-59.00. Few Yield Grade No. 1, 1445/2000 lbs. sl. bulls 57.25-62.25. Feeder Cattle: Few Medium & Large Frame No. 1, 325/420 lbs. steers 77.00-90.00, few 540/720 lbs. 64.50-74.50. Few Med. & Large Frame No. 1, 620/700 lbs. heifers 55.00-61.75, Large #2, holsteins 685/1070 lbs. 50.00-54.50.
CALVES 296...One Prime 118.00, one Choice 103.00, Good 87.00-101.00, Standard & Good 90/120 lbs. 80.00-89.00, 65/85 lbs. 60.00-81.00, Utility 45/85 lbs. 38.00-55, some down to 10.00. Farm Calves: Hol. Bulls 85/135 lbs. 85.00-151.00, Hol. Heifers 90/120 lbs. 85.00-100.00. Beef cross bulls & heifers 80/120 lbs. 80.00-149.00.
HOGS 561 Barrows and gilts mostly .25 lower. US No. 1-2 220/250 lbs.

Lebanon Valley Livestock Auction

Fredericksburg, Pa.

Tuesday, February 14, 1989

Report Supplied by PDA

CATTLE 135...PDA...Compared with last Tuesday's market: Slaughter cows uneven, extremes .50 higher to .75 lower. Few Choice 1230/1480 lbs. slaughter steers 72.75-75.50, Select 67.25-73.50; few Select & Choice 1200/1585 lbs. holsteins 65.00-67.00, few Standard & low Select 57.50-64.50, one Utility 46.50. One Choice holstein heifer 59.75, one Select 60.75. Breaking Utility & Commercial sl. cows 50.00-53.25, few 56.75, Cutter & Boning Utility 47.50-51.50, few 53.50, Canner & Low Cutter 44.25-48, few 49.50, Shells down to 38.00. One Select low yielding sl. bullocks 60.25, one Standard 53.25. Two Yield Grade No. 1, 11915/2045 lbs. sl. bulls 64.75&66.25.
CALVES 169...Vealers steady to \$2 lower. Individual Choice at 106.00, one 340 lbs. 89.00, Standard & Good 80/115 lbs. 68.00-74, few to 81.00, Utility 60/80 lbs. 50.00-65.00. Farm Calves: Hol. Bulls 90/130 lbs. 100.00-150.00, 85/90 lbs. 86.00-96.00; few Hol. Heifers 85/110 lbs. 101.00-111.00. Beef cross bulls and heifers 70/125 lbs. 80.00-117.00.
HOGS 116... Supply includes 29 sows ...US No. 1-2 212/226 lbs. barrows and gilts 40.50&40.85, few 1-3 208/260 lbs. 40.10-41, lot 43.75, few Utility 150/175 lbs. 23.50-26.00. Sows small supply steady. US No. 1-3 305/630 lbs. sows 29.00-33.50, few to 34.50. Few Boars 23.00-28.50.
FEEDER PIGS 0...No Market Test.
SHEEP 2...One High Choice 105 lbs. wool sl. lamb 80.00.
GOATS 0...No Market Test.

Mercer Livestock Auction

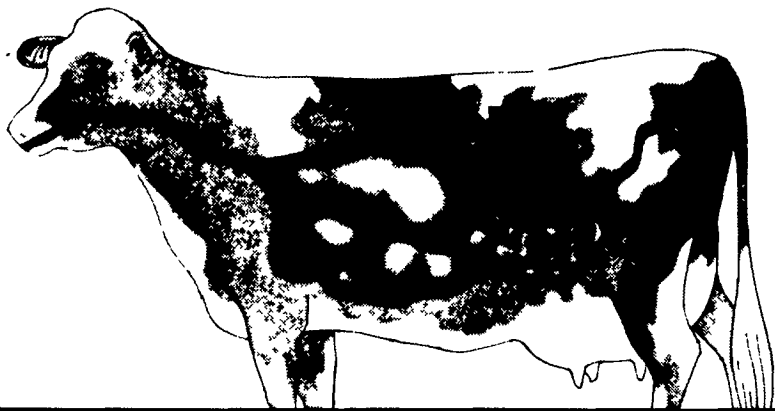
Mercer, Pa.

Tuesday, February 14, 1989

Report Supplied by PDA

CATTLE 210 PDA...Compared with last Tuesday's market Slaughter steers steady; Cows \$2 to \$3 higher. Choice sl. steers 70.50-74.80, couple High Choice 75&75.50, Select 68.00-71.00, Standard 61.00-67.00. Choice sl. heifers 68.50-71, one high Choice 74.00, Select 65-67.50, few Standard 46.00-60.00 Breaking Utility & Commercial sl. cows 49.00-53.00, couple 54.00, Cutter & Boning Utility 46.00-50.00, Canner & Low Cutter

Is too much of your dairy protein breaking down before it gets here?



Ask your feed supplier about SoyPLUS®. SoyPLUS can boost income over feed costs by delivering more undegradable protein to the small intestine, where nutrient absorption really takes place.

SoyPLUS is a richly aromatic, high-energy soybean meal that has been processed in a unique way to increase its level of undegrad-

SOYPLUS BYPASSES MORE PROTEIN!

PROCESSING METHOD	UNDEGRADABLE PROTEIN
Jet-Spoded (roasted)	25%
Solvent	35%
Extruded	35%
SoyPLUS	65%

SOURCE Estimated percentage bypass determined by inhibitor in vitro system (Broderick Can J Anim Sci 64 [Suppl] 31 1984)

able (bypass) protein. University research and many 20,000-pound herds are proving that SoyPLUS can significantly increase your return over feed costs.

HIGH-BYPASS SOYBEAN MEAL
SOYPLUS.

Box 68, Ralston, IA 51459

Call 712/667-3200 for more details.

MELHORN SALES, SERVICE, TRUCKING CO.

1010 W. Main St., Mount Joy, PA 17552

LOCAL DEKALB HATCHERY TEAM



Four nearby locations capable of large volumes to fill your orders in 1 to 2 consecutive days utilizing professional people and state of the art equipment. This provides you with fast, efficient service that results in a top quality chick.

The only full service company, in this area, to handle the total needs of poultrymen.



For More Information Phone:

717-653-1102

Monday - Friday 8:30 AM - 4:00 PM

