

Deere Introduces 600 Series Disks

MOLINE, IL. — John Deere 600 series disks feature new tandem design with a cushioned disk middle breaker that allows the disks to get double offset design performance. The new design allows the straight-pulling characteristics of a tandem design while cutting out the center balk of soil.

The 620, 630, 640, and 650 models have widths ranging from 6 ft. 3 in. (620 integral disk) for tractors under 85 hp to 32 ft. 4 in. (650 flex-fold disk) for use with four-wheel-drive tractors.

The 620 integral disk features an adjustable gang angle to give flexibility in matching disk to soil. Front gang angle may be adjusted to 20, 15, or 10 degrees and the rear gang angle may be adjusted to 18, 13, or 8 degrees.

Regreaseable, triple-lip bearings provide ease-of-service and increased reliability.

New tandem gangs on the 620 drawn disk provide stability to minimize side-to-side movement. The disk is designed with a weight-per-blade range of 53 to 73 pounds.

The 620 integral and the 620 drawn disks replace the John Deere 105 integral and 115 drawn disks.

630, 640, 650 Features

The 630, 640, and 650 disks have a cushioned disk middle breaker. This new tandem design allows the disk to get double offset design performance in cutting out the center balk of soil while achieving the straight-pulling characteristics of a tandem design.

An exclusive hydraulic fore/aft leveling option lets the operator level the disk on-the-go for varying soil conditions. A hydraulic motor is mounted on the leveling rod; an indicator on the rod shows clockwise or counter clockwise rotation that can be seen from the tractor seat. This option on a wingfold disk requires the tractor to be equipped with three SCV's.

A new maintenance-free wheel module bearing replaces a sleeve-

type drop axle bearing eliminating a 10 hour service interval.

Frame tubing and gang tubing are more massive than previous models. New straight standards are heavier for increased reliability.

Mainframe and wingframe members are bolted directly to the gang tubes so hardware stretching, loosening, and failure is reduced. These hard joints are used instead of long hardware and straps. Fixed gang angles of 20 degree front and 18 degree rear (22 degrees front/20 degrees rear on the 650 model) give best performance over a broad range of primary and secondary operations.

Retained Features

Several features have been retained from previous disk models.

A self-leveling hitch maintains level transport and level field working positions without adjustment. In the field, the disk weight stays over the gangs without being transferred onto the tractor drawbar.

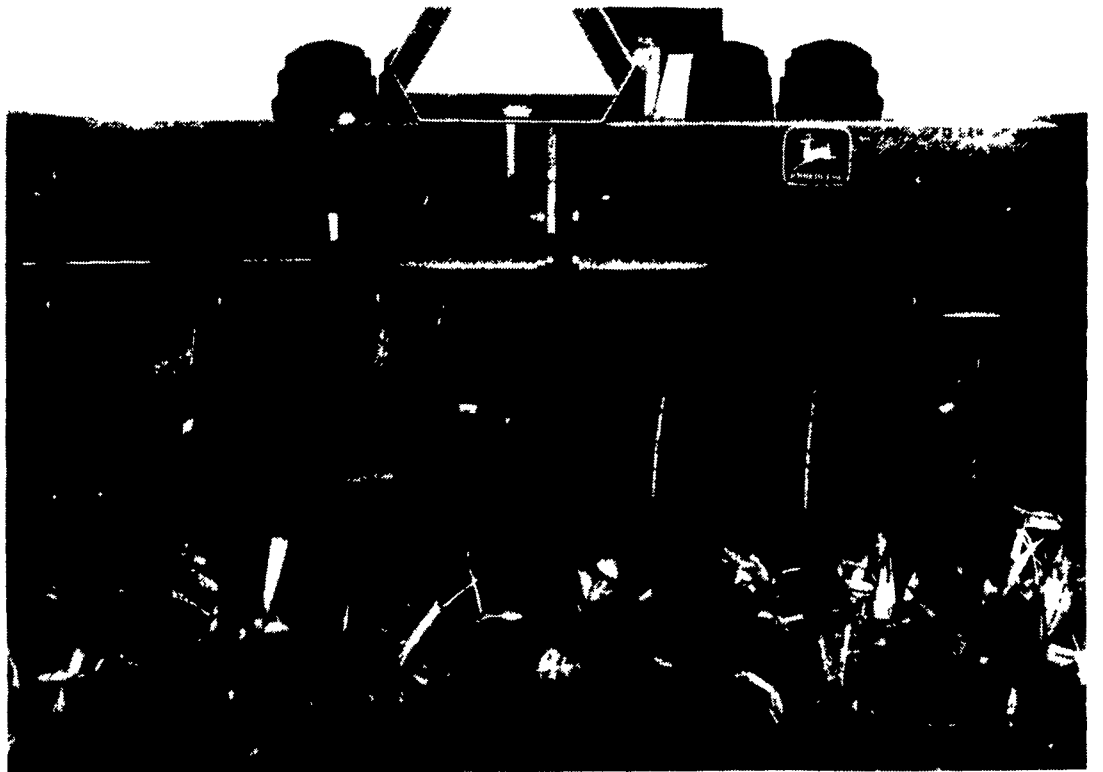
Single-point depth control, standard equipment on the new disks, returns the disk to the same working depth each time it is lowered. This eliminates the need for mechanical depth stops.

An optional, field-installed, hydraulic wing control keeps the wings penetrating in adverse conditions while allowing them to flex over obstructions. This option also prevents the wings from gouging in soft, moist or sandy conditions.

Dura-Flex bearings, with a two-year warranty, have four seals, are self aligning, and have a 50-hour service interval.

Combination scrapers are standard equipment on the 630, 640 and 650 models. The scrapers can be set in a rigid or self-adjusting mode to meet various field conditions.

Additional spring pressure is available to the fore/aft leveling



The cushioned disk middle breaker on the new John Deere 600-series disks allows the disk to get double offset design performance in cutting out the center balk of soil.

KEN CLUGSTON
(717) 665-6775

CRAFT-BILT CONSTRUCTION INC.

FARM-HOME BUILDING

R.D. #2 MANHEIM, PA.

PH: (717) 665-4372

BUILDING & REMODELING FOR —

DAIRY

SWINE

BEEF

RESIDENTIAL

POLE BUILDINGS

STORAGE

FRANK A. FILLIPPO, INC.

**- WANTED -
DISABLED & CRIPPLED
COWS, BULLS & STEERS**

Competitive Prices Paid

**Slaughtered under
government inspection**

**Call: Frank Fillippo -
Residence - 215-666-0725
Elam Ginder - 717-367-3824
C.L. King - 717-786-7229**

(Turn to Page D13)

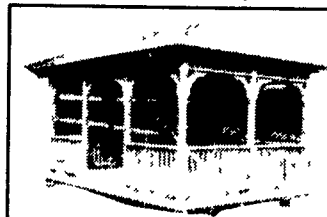
Lykens Valley Structures

INTRODUCTORY OFFER

Cedar Gazebos

5% More Than Pressure Treated Gazebos

Cedar Lawn Furniture & Redwood Lawn Furniture Available



10'x14' Rectangle ready for shipping



10' Victorian Gazebo



Victorian Screened Gazebo

Lykens Valley Structures are built using all pressure tested (SYP .40)

We Use All Galvanized Nails For Maximum Durability.

Gazebos Are Available in 8', 10', 12' & 14'

(Also Optional) Benches & Screening & Tables.

Wishing Wells & Bird Feeders &
Lawn Furniture & Mailboxes

Also Available In Pre-Fab Kits.

(Deluxe Model Only).

8', 10', 12', 14', 18'

(Ready For Shipping)



**SAVE
COWS,
TIME &
BEDDING**

**SAVE
40%**

on
**New Replacement
Belts For Farm
Machines**

• Bale Thrower Belts

•70.00

• Grove-Gehl-Int.-S.U.
Wagon Box Belts

•120 to •150

Also Available: Bean Picker Belts & Big
Round Baler Belts

Any flat belt can be custom made for your
farm machinery (cleats installed). Belts
shipped same day by UPS.

For more information, write:

Bob Gabel

Rt. 16, Chaffee, New York 14030

CALL TOLL FREE: 1-800-537-3003

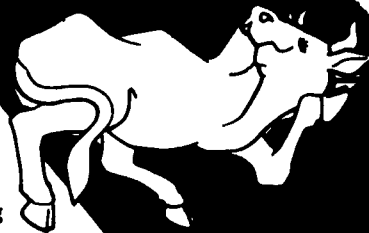
Phone Collect: 716-496-6025

COW MATS

Use our unique method of install-
ing a one piece mat under a row
of cows. Prevents movement
of mat and bedding from
creeping underneath.

All "row" and single
mats are cut from
heavy one inch
rubber belting.

Flat belts shipped
same day as order



R.D. 2 Box 59
Millersburg, Pennsylvania 17061
Delivery Is Also Available

Leave Message (717) 692-2645
No Sunday Calls
Also Dealer Inquiries Welcome