

Gradall 2460
\$4,500

Dennis M. Miller
Construction
Equipment Sales
1-800-252-0"CAT" Days
717-838-1888 Eves



NEW TRACTORS
CASE-IH

235 hydro 2WD
245 4WD turf tires w/
loader
585 4WD, (special price)

USED TRACTORS

IH 424 G
Farmall Cub w/New
Woods 60" Mower &
Snow Plow
Farmall Cub w/22 Mower
Farmall Cub LoBoy w/
Mower **SOLD** Blade

NEW EQUIPMENT
CASE-IH

2200 Loader for 385-485
Tractor
2250 Ldr. w/72" Bucket
7 QA Ldr. for 200 Series
Tractor
10 QA Ldr. for 200 Series
Tractor

NEW
OTHER EQUIPMENT

Woods 750 Backhoe
w/18" Bucket
Woods RM500 Rear Mt.
Mower
Woods RM600 Rear Mt.
Mower
Woods M54, 5' Rear Mt.
Mower, Special Price

LAMB'S FARM
MACHINERY

Thorndale, PA
Phone 215-269-2676

USED EQUIPMENT

856
826 D Cab
684 D RC w/2250
Loader
544 Dsl, Hydro
400 Dsl.
(2) IH 154 LoBoy w/
mowers
BN Tractor
IH 606 D 3 Pt.
F300 Gas
2 Farmall Cub w/Belly
Mower
Allis B w/Woods Belly
Mower
Farmall Super MTA
Farmall C
Farmall M
IH 370 Disk 12'
JD 13' Disc
10' AC Chisel
16' Field Cultivator
PTO Hydraulic Roll Mill
Used Cadets 10HP to
20HP
NI 323 Corn Picker

NEW EQUIPMENT

Amco Disk 10"
Woods Mowers
Cub Cadets & Access.
Westfield Auger 8"x51'
2 pt. & 3 pt. Conversion
Kits
8 ton & 10 ton Demco
Wagons
Demco 500 gal. Sprayer
Worksaver 12" Post-
hole Digger
Hay Tedders
3 Pt. Grader Blades
Cam Sprayers
Cement Mixer, 3 Pt.
Honda Engines

SMITH FARM
EQUIPMENT

Newport, Pa.
Perry County
717-567-3562 or
717-567-6566



WISCONSIN
HEAVY DUTY
ENGINES

Wisconsin Replacement Engines
(Will Accept Trade Ins)

- V465D-LB, 65.9 HP \$2,450
- VG4D-SB, 37 HP \$1,550
- W4 1770-LB 35 HP \$1,450
- VH4D-LB, 30 HP \$1,350
- VH4D, 30 HP, LB Bobcat Repl. \$1,350
- TJD, 18.2 HP \$1,025

Kohler Replacement Engines

- K301S 12 H.P. Elect. as low as \$555
- K181T 8 H.P. Recoil as low as \$375



Welders, 150-225 Amps.

- Wisconsin Robin • Honda • Kawasaki
- Kohler • Tecumseh • Briggs & Stratton
- Honda Industrial Generators

Authorized Service Center

• Complete Rebuilding • Large Parts Inventory

FISHER ENGINE SERVICE

3141 Old Phila. Pike, Bird-In-Hand, PA 17505 (717) 768-3729
HOURS: Mon-Fri. 7 AM - 5 PM, Sat 8 AM - 11 AM

Your Case IH Better Connection
For Repair Service Is Here!

Pre-Season
Service
Savings

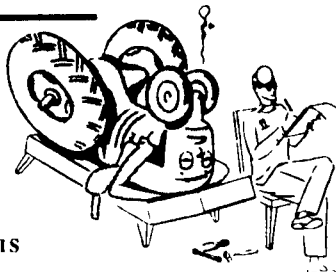
BE
READY
TO GO!

January
and
February
Shop Special



Get your tractor, skid loader and equipment in top shape for the busy season and save at off-season prices. Don't wait until the busy season hits. Get your equipment ready to roll now at special Pre-Season Service Savings.

Call Now For Full
Details On Service
Savings - Set Your
Appointment To Have
Your Machines Repaired.



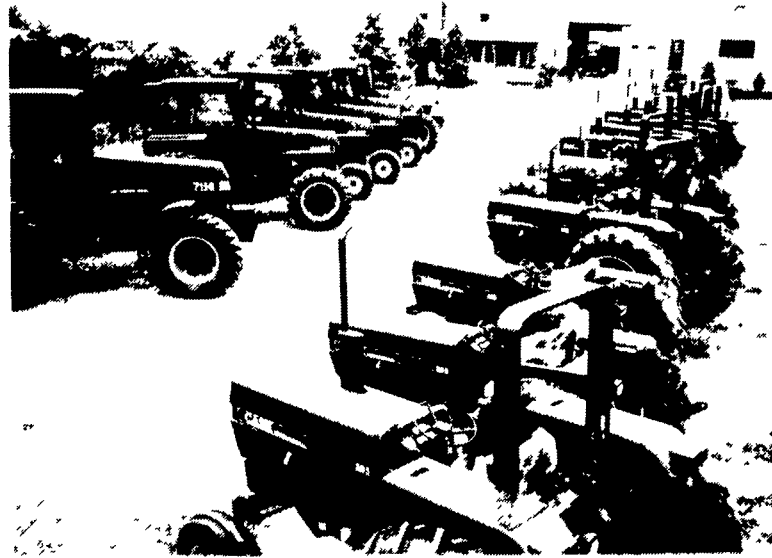
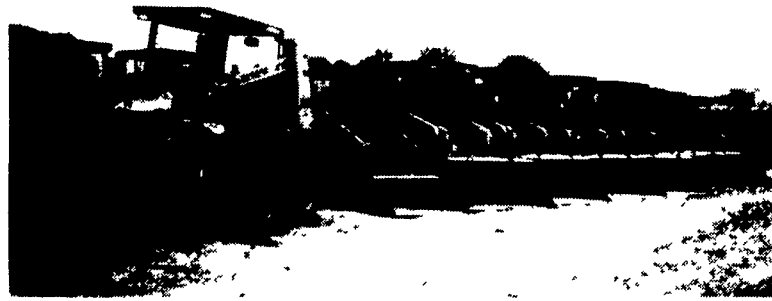
FACTORY TRAINED SERVICE SPECIALISTS
• CASE • IH • CASE IH

BINKLEY & HURST BROS., INC.

133 Rothsville Station Rd.,
Lititz, PA 17543
(717) 626-4705



See Binkley & Hurst Bros. Now For
All Your Skid Loader & Tractor Needs!



Come In & Make A Good Deal On
A New Quality Case IH Tractor Now!



We Have Several New **CASE IH** Model 2096 Tractors
2 Wheel Drive, Cab, Air, Heater With Power Shift Transmissions
Rated 115 HP In Stock. **ONE DEMO MODEL** We Have A 96L
Heavy Duty Case Front-End Loader In Stock To Make A
Perfect Match As Shown. This New 96L Loader Comes With
An 83" Bucket. This Can Be Mounted On 1896 & 2096 Tractors

Great rebate or finance plan makes
a better Case against the competition



Don't miss out on this limited-time program. Buy a new Case 1800 Series Uni-Loader® Skid Steer before March 31, 1989, and see how much you can save.

For example, \$200 to \$500 rebates or special financing are available on models 1818 and 1825 Gas, 1835C Gas or Diesel, and 1845C Diesel. There's also special financing on the 1818 and 1825 Diesel.

With deals this good, the supply of new Case Uni-Loader Skid Steers won't last long. Stop in and see us soon!

Your No. 1 source for Uni-Loader skid steers

BINKLEY & HURST BROS., INC.

133 Rothsville Station Rd., Lititz, PA 17543
Located 1/4 Mile North of Rothsville

(717) 626-4705

Mon-Fri 7 AM-5 PM
Sat 7 AM-11:30 AM
Sun. Closed - Lord's Day

After Closing
Emergency Parts Dept.
717-626-0885

717-933-4753 717-273-5671

