

case ih MAGNUM POWER

Why Not Consider A New Case IH Magnum Tractor From Your Case IH Dealer - Binkley & Hurst Bros. Inc. - For An Enjoyable Spring!



MAGNUM tractor engines meet or exceed all SAE J1349 performance standards. Same for government and industry mandated emission standards worldwide.

Case IH put more into these engines than any farm tractor engine developed in the last twenty years. You'll get more out of it. More performance in the field. 130 to 195 PTO hp. See us for details.

MAGNUM means more.

Stop In Or Call 717-626-4705

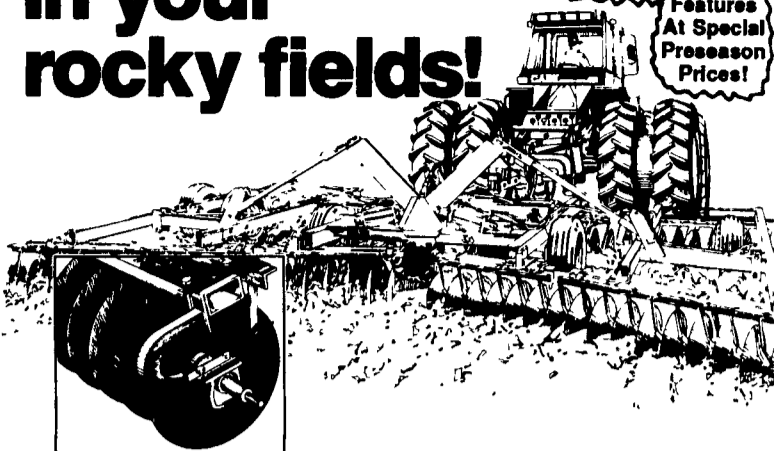
Four all-new tractors with four all-new engines.

In the field, power means productivity. And that's where MAGNUM tractor engines deliver.

These new engines are the products of the latest computerized design and manufacturing techniques. They're compact yet stronger. And they have 25% fewer parts.

With 505 cubic inch displacement, there's plenty of reserve power. What's more,

Protects itself in your rocky fields!



Case International 496 Cushion Gang Disk Harrow

Buy This 19'11" Workhorse Now!

See the 496 Cushion Gang Disks with their tougher blades now!

JUST ARRIVED
New Case IH 19'11" Wing Disk Harrow With Lots Of Fine Features At Special Preseason Prices!

You need all the protection you can get for your disk harrow in rock- and root-infested ground. The Case International 496 Cushion Gang Disk Harrow is your answer. It soaks up shock loads with exclusive C-shaped double-spring steel bearing standards. The gangs flex and float over obstructions. The cushioned "give" protects your harrow while providing uniform depth control over your entire field, and across the full width of cut.

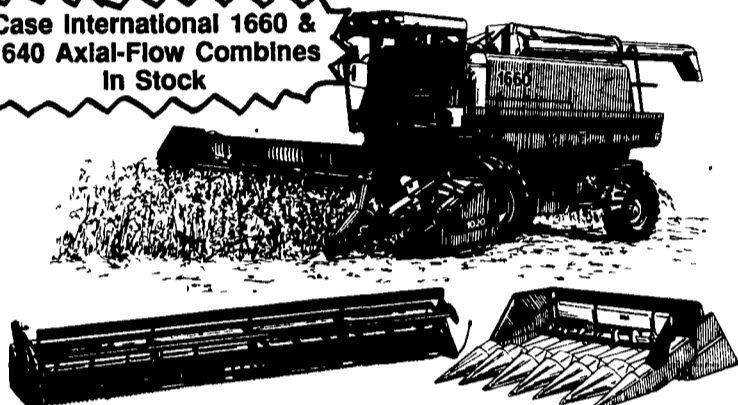
- Folding wing sizes from 18' to 32' with 7 1/2" or 9" spacing

- Disk blades last up to 20% longer than ordinary blades due to Earth Metal® steel

- Level disking with synchronized master and slave hydraulic cylinders.

Binkley & Hurst Bros. Inc. Savings to You - TAKE ADVANTAGE NOW!
Check Out Our Lease Plan That Can Save 1000's Of Dollars!

Case International 1660 & 1640 Axial-Flow Combines In Stock



When it comes to harvesting crops, this big crop-saver can save more grain than other combines in its size class. It has the muscle to "get in and get out" fast to make the most of each day of good harvesting weather. It consistently turns out cleaner grain so you can get top market price. Put a 1660 to work and take advantage of these field-proven features:

- Axial-Flow Design: Uses a single rotor with fewer moving parts and fewer problems than conventional combines using the cylinder-and-concave design. Its more gentle threshing action means less cracked grain and top price for every bushel.

- Human-Engineered Cab: Provides day-long comfort for increased operator productivity.
- 180 hp Turbocharged Diesel and 3-Speed Hydrostatic Transmission: Plenty of power to handle soft soils and hilly terrain.
- 1015 Pickup Header: Available in 11- and 13-foot widths. Hydraulic variable speed drive lets you match crop pickup to ground speed for smooth delivery with minimum shattering.
- 1010 Rigid and 1020 Flexible Cutterbar Direct Cut Headers: Also available in several widths from 15 to 30 feet depending on model.
- 1000 Series Corn Heads: In four to eight row sizes.

The 1660 Axial-Flow Combine... a generation ahead.

The Other Combine Dealer Who Gives Service And Sells Combines - See Us Now!

See Us For Your Vibra Shank & Field Cultivator Needs!
Just Received...NEW SHIPMENT OF CASE IH 4500 VIBRA SHANK FIELD CULTIVATORS



We've Got These Sizes Ready For Work! Don't Miss Your Size By Waiting Too Long At Special Pre-Season Prices!

- 4509 Pull Type 9 1/2 Foot
- 4511 Pull Type 11 1/2 Foot
- Specially Designed By Binkley & Hurst - 15 1/2 Foot Wing Model With Narrow Transport Width Under 12 Feet
- 4510 3 Pt. Mount 10 1/2 Foot
- 4512 Pull Type 12 1/2 Foot
- 4513 Pull Type 13 1/2 Foot
- Also Specially Designed 16 1/2 Foot Hydraulic Wing-Fold Model With Transport Width Under 12 Feet.

You Must See These Specially Designed Units With A Lot Of Features You Will Really Appreciate!

Special Offer On A New Case IH 585 Low Profile Tractor - Ideal For Low Clearance Loader Operations!



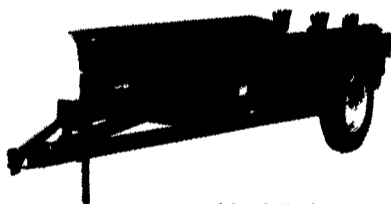
52 HP Case IH

Spec. NC 2507, 6.00x16 Front Tires, 14.9x24 Rear Tires, Twin Dual Hydraulic Outlets With Breakaway Couplers

Factory List Over \$17,000 Special \$13,650

Buy This Tractor Before The End Of Feb. 1989, With A New Case IH Loader, Forage Harvester, Manure Spreader, Mower Conditioner, Round Baler, New Centerline Baler And Case IH Will Send You A Check For \$500 To Sweeten Your Deal! Just Imagine! Buy A New Mount-O-Matic Loader Or Other Machinery Listed Above And Save Another \$500 And On Top Of All This Get A Tax Deductible Special Lease/Purchase Deal With Low Low Down Payment

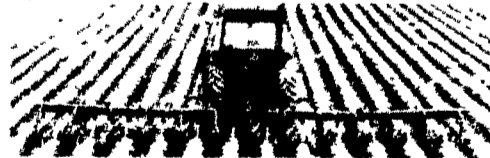
NEW CASE IH 530 SPREADER



Up To 135 Bu.

Was \$2,995 \$2,895
Equipped As Shown
TOW-AWAY PRICE \$2,700

NEW CASE IH CULTIVATORS



6 Row, 3 Pt. In Stock At \$1,985 Only 2 Left!

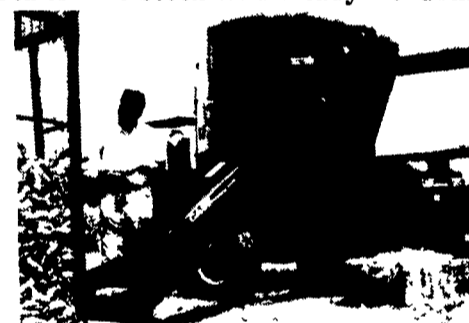
CASE IH HUSKY ROLLOVERS
Time Savers On Turns

In Stock - Model 145 Rollover, 3 Bottom Plow, Automatic Reset

Only A Few Left - Make Your Deal Now!



New Case IH Model 1350 With Digital Scales - In Stock And Ready To Grind!



Big New 150 Bu. Capacity With Scales & Other Fine Features -

21" Hydraulically Driven Auger Feed, 2 Screens, Large Flotation Tires
It Can Grind Up To 120,000Lbs. Of Shelled Corn Per Hour!

Factory List Towaway Now Over \$10,909 For Only \$8,855
Last One Available - Don't Miss A Bargain!

New Case IH 3 Pt. Scraper Blades

Pick-Up Yours Now!



Model 20

Model 20 With 7 Foot Moldboard \$448
Model 30 With 8 Foot Moldboard \$734

BINKLEY & HURST BROS., INC.

133 Rothsville Station Rd., Lititz, PA 17543

Located 1/2 Mile North of Rothsville

(717) 626-4705

Mon.-Fri. 7 AM - 5 PM;
Sat. 7 AM - 11:30 AM
Sun. Closed - Lord's Day

After Closing:
Emergency Parts Dept.:
717-626-0885
717-933-4753 717-273-5673

