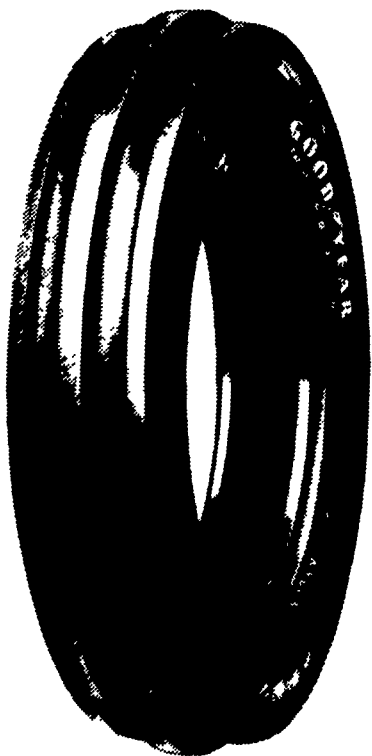
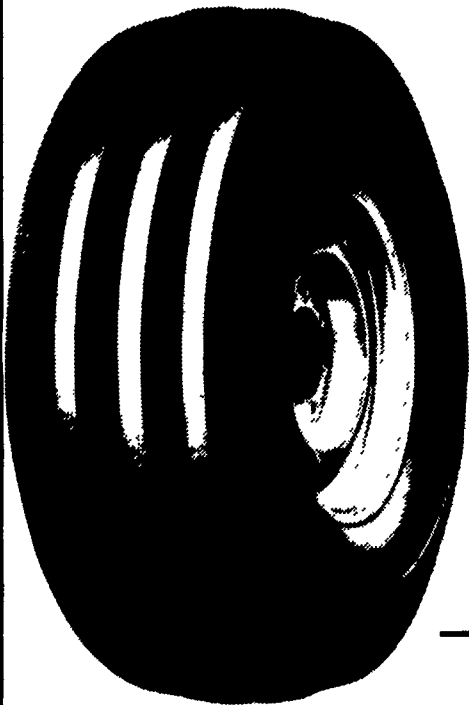


GOODYEAR FARM TIRE BARGAINS



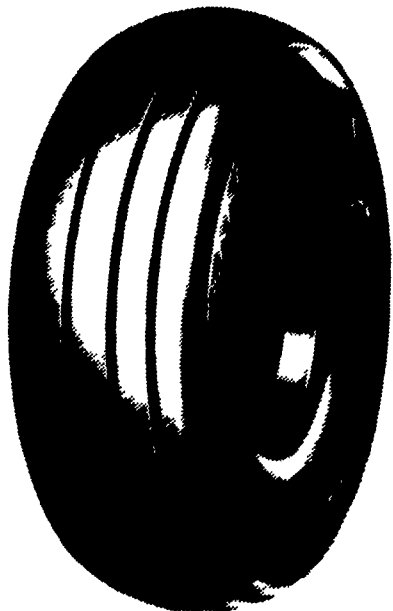
FRONT TRACTOR 3 Rib

600-16 4 Ply TT	\$44.00
600-16 6 Ply TT	\$48.00
650-16 4 Ply TT	\$51.00
650-16 6 Ply TT	\$55.00



4 Rib

750-16 6 Ply TT	\$65.00
95L15 6 Ply TT	\$69.00
11Lx15 6 Ply TT	\$85.00
11Lx15 8 Ply TT	\$89.00
1000-16 6 Ply TT	\$96.00
1000-16 8 Ply TT	\$99.00
1100-16 6 Ply TT	\$115.00
1100-16 8 Ply TT	\$129.00



FARM UTILITY WAGON TIRES

95L-15 6 Ply TT	\$49.00
95L-15 8 Ply TT	\$51.00
95L-15 6 Ply TL	\$54.00
95L-15 8 Ply TL	\$56.00
11L-15 6 Ply TT	\$49.00
11L-15 8 Ply TT	\$51.00
11L-15 8 Ply TL	\$56.00
12L-15 10 Ply TT	\$73.00



The Hard-Working, Hard-Pulling Tractor Rear DYNA TORQUE II

- Excellent drawbar pull with long-bar, short-bar lugs for improved traction
- Designed for improved stability and road-ability, plus reduced vibration
- Strong angle-braced lugs have self-cleaning design
- High-strength polyester cord body, and heavy duty rim shield protects tire from damage



We'll fix it in the field! Gold Star Pit Stop Service. On-farm tire service when you need us. Just give us a call and we'll be right there. You'll be back on the job in a flash!

11.2-28 4 Ply	\$150.00	18.4-38 6 Ply	\$410.00
12.4-28 4 Ply	\$170.00	18.4-38 8 Ply	\$445.00
13.6-28 4 Ply	\$190.00	20.8-38 8 Ply	\$599.00
15.5-38 6 Ply	\$275.00	18.4-42 10 Ply	\$619.00
16.9-38 6 Ply	\$360.00		
18.4-34 6 Ply	\$370.00		

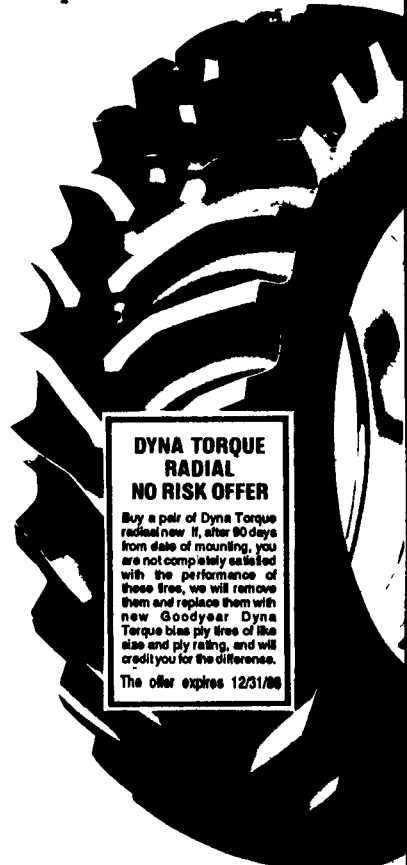
Get the pull of your life with Dyna Torque Radial rears

DYNA TORQUE RADIAL

- Revolutionary 3-lug per pitch design improves traction and ride
- Computer designed "natural" shape casing improves tire body life
- Radial construction provides better traction, lower fuel and overall costs

16.9R38 ★	\$495.00
18.4R34 ★	\$470.00
18.4R38 ★	\$530.00
20.8R38 ★	\$750.00
24.5R32 ★	\$955.00
18.4R42 ★★	\$675.00

- Compare Our Size Dimensions
- Compare The Number Of Bars
- See The Footprint As Compared With Other Brands



DYNA TORQUE RADIAL NO RISK OFFER

Buy a pair of Dyna Torque radial new tires, after 90 days from date of mounting, you are not completely satisfied with the performance of these tires, we will remove them and replace them with new Goodyear Dyna Torque bias ply tires of the same size and ply rating, and will credit you for the difference. The offer expires 12/31/88

See Your Independent Dealer For His Price And Credit Terms. Price And Credit Terms As Shown At Goodyear Commercial Tire Centers In All Communities Served By This Newspaper.

**Ron Davis
Tire Center**
816 Providence Road
Scranton, PA
717-342-7544

**Peoples Sales
& Service Inc.**
Oakland Mills, PA
717-436-2735

**Crescent
Tire**
325 S. Whitehorse Pike (Rt. 30)
Hammonton, N.J.
609-561-1155

**Brad Ragan,
Inc.**
1818 Grammas Rd.
Allentown, PA
215-797-8115

**Service Tire
Truck Centers**
2424 State Rd.
Bensalem, PA
215-639-1882

**Service Tire
Truck Centers**
2320 Avenue A
Bethlehem, PA
215-691-8473

Colledge Tire
510 W. State St.
Kennett Square, PA
215-444-5030

**Goodyear
Commercial
Tire Center**
165 Keystone Rd.
Chester, PA
215-494-2160

**Horlacher &
Sherwood**
153 E. Tioga
Tunkhannock, PA
717-836-1116

**Henry Tire
Service**
3108 W. Mkt. St
York, PA
717-792-9779

**Automotive
Service**
1350 Schuylkill Ave.
Reading, PA
215-374-3414

**Goodyear
Commercial
Tire Center**
1-81, Rt. 39
Harrisburg, PA
717-657-1005

**Goodyear Auto
Service Center**
260 W. Hamilton Ave.
State College, PA
814-238-4955

P. Lebzelter
Rt. 72 & Lausch La.
Lancaster, PA
717-569-3776

**Dices
Tire Shop**
1421 Lincoln Way
Chambersburg, PA
717-264-9312

**Martins
Service**
W. Main St.
Waynesboro, PA
717-762-5913

**Sunbury
Frame**
5th & Arch Sts.
Sunbury, PA
717-286-4921

**Service Tire
Truck Centers**
99 Whiteman Rd.
Reading, PA
215/921-8473

**Kirkwood
Tires, Inc.**
1929 Kirkwood Hwy.
Newark, DE
302-737-2460

**Klingerman
Bros.**
555 E. 7th St.
Bloomsburg, PA
717-784-4285

**Yoder Tire
Service**
RD #1
Towanda, PA
717-265-3635

**Pat & Red's
Tire Service,
Inc.**
107 Brown St.
E. Stroudsburg, PA
717-424-6178

**Zimmerman
Farm Service
Inc.**
School Rd
Bethel, PA
717-933-4114

**Lebanon Valley
Imp. Co.**
700 E. Linden St.
Richland, PA
717-866-7518

**BHM Farm
Equipment**
RD 1 Rt. 934 North
Annville, PA
717-867-2211

**Shueys Sales
& Service**
Jonestown Road
Ono, PA
717-865-4915

**Umbergers of
Fontana**
RD #4
Lebanon, PA
717-867-5161