

# Biotechnology To Be Discussed At Corn, Soybean Conference

COLLEGE PARK, MD. — Land-grant colleges and the U.S. Department of Agriculture led the way in both the research and educational aspects of hybrid corn, which revolutionized this nation's agriculture in the 1930's.

But the biotechnology revolution of the 1990s is shaping up as a three-way partnership among land-grant universities, USDA and agribusiness.

A research representative of a nationally known commercial organization will tell about his company's involvement in this partnership during a mid-morning talk at next week's Delmarva Corn & Soybean Technology Conference, set for February 8 at the Wicomico Youth & Civic Center in Salisbury.

Dr. Nicholas M. Frey, director of technology acquisition and development for Pioneer Hi-Bred International, Inc., of Des Moines, Iowa, is the scheduled speaker. His assigned topic is

"Biotechnology--Its Impact on Our Management Practices."

Frey is expected to tell about Pioneer's research progress in developing hybrid corn varieties that are resistant to certain grass-killing herbicides that can now only be used safely on broadleaf crops like soybeans. Specifically, Pioneer scientists are working on corn which can tolerate Scepter and Pursuit, two new products marketed by American Cyanamid.

"Resistance to herbicides is a forerunner of many new agricultural production and management options that biotechnology can provide," Frey commented recently.

"New genetic traits will enhance the value of grains for both animal feed and food processing. But they will make management decisions for farmers more complex.

"Thus, it will be imperative for chemical companies, seed companies and the Cooperative Extension Service to give farmers accurate information on seed selection and herbicide tolerance."

Other speakers during the February 8 corn & soybean conference will direct their attention to pest management, crop rotation, world outlook, grain marketing, sorghum production, nutrient management and mold problems in feed grains.

A concurrent family-oriented morning program will have speakers addressing health hazards and

financial liability problems of farmers, and how to reduce these risks.

The Delmarva Corn & Soybean Technology Conference, now in its ninth year, is sponsored by agribusiness firms serving Delaware, Maryland and Virginia and by the Cooperative Extension Service at land-grant universities in those states.

W. James Milliken, an Extension agricultural agent in Kent

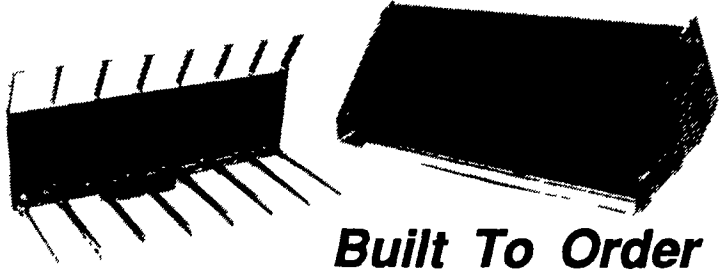
County, Md., is this year's planning committee chairman. He expects nearly 1,000 persons to attend.

Activities at the Wednesday event will get under way at 8:30 a.m. with free coffee and doughnuts and a chance for farmers to visit more than 50 commercial and educational exhibits. The program itself will run from 10 a.m. to 2:45 p.m., with 45 minutes off for lunch.



## MILK. IT'S FITNESS YOU CAN DRINK.

### BUCKETS & FORKS For Skid Steer Loaders



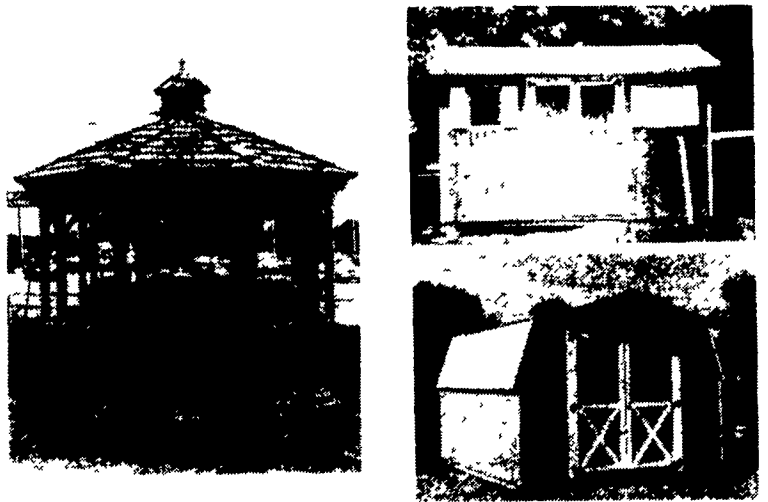
**Built To Order**

**Also Available:**  
Replacement Bucket Cutting Edge, Any Length

**ATI Corporation**

325 WEST MAIN ST., NEW HOLLAND, PA 17557  
(717) 354-8721

### STORAGE BARNS & GAZEBOS Custom Made To Order



If You're Looking For Quality At A Good Price, Contact

### B & B STRUCTURES

Henry K. Blank  
RD 1, Bird-In-Hand, PA 17505  
(717) 656-0783  
Dealer Inquiries Invited

**DELIVERY  
AVAILABLE**

**SAVE  
COWS,  
TIME &  
BEDDING**

**SAVE  
40%**

on  
**New Replacement  
Belts For Farm  
Machines**

- Bale Thrower Belts **\$70.00**
- Grove-Gehl-Int.-S.U. Wagon Box Belts **\$120 to \$150**

Also Available: Bean Picker Belts & Big Round Baler Belts

Any flat belt can be custom made for your farm machinery (cleats installed). Belts shipped same day by UPS.

For more information, write:

## Bob Gabel

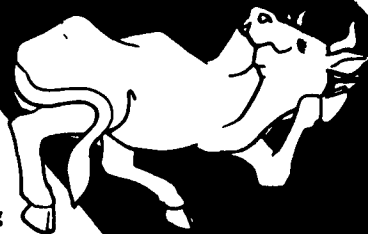
Rt. 16, Chaffee, New York 14030  
**CALL TOLL FREE: 1-800-537-3003**  
**Phone Collect: 716-496-6025**

### COW MATS

Use our unique method of installing a one piece mat under a row of cows. Prevents movement of mat and bedding from creeping underneath.

All "row" and single mats are cut from heavy one inch rubber belting.

Flat belts shipped same day as order



**PAUL B. Zimmerman INC.**

### AUTOMATIC HEADGATE

Full Roof Cover For Outdoor Protection

Double Linkage For Extra Stability

Handle Can Be Operated From Both Sides

Full Sheet Protection On Front



Optional Chute

Heavy Duty Latch For Positive Locking

No Wrenches Needed To Adjust Back Set Open

Fast, Easy Adjustment On Both Sides So Animal Size Can Be Adjusted Under Pressure

Handle To Help Close For Slow Or Horned Cattle

Neck Size Adjusts From 5" to 7"

**PAUL B. ZIMMERMAN, INC.**

Call or Write For Additional Information And Your Nearest Dealer

295 Woodcorner Rd.  
Lititz, PA 17543  
1 Mile West of Ephrata  
Phone: 717-738-1121