

Sheep Producers Form New Organization

LAS VEGAS, NV. — The American Sheep Producers Council and the National Wool Growers Association voted to merge into one organization.

The final decision was made during the American Sheep Industry Convention in Las Vegas today.

The immediate past ASPC and NWGA presidents, Edgar Olson, Minn., and Bill Pfluger, Texas, respectively, called the merger a "positive advancement for the sheep industry."

The new group, the American Sheep Industry Association (ASI) headquartered in Denver, Colo., will allow the nation's sheep producers to more effectively promote the U.S. sheep, lamb and wool industries.

ASI's major functions include lamb and wool market development, producer services and government relations, representing

the interests of the nation's 114,000 sheep producers.

The association will aim at creating an increased demand for industry products in domestic and international markets as well as carrying out an effective government relations' program. It also will focus on advancing the tech-

nology of lamb and wool production and marketing, and creating a favorable economic and regulatory environment for the industry.

After a year-long process of research and revision, both ASPC and NWGA directors voted in favor of the merger plan. The merger is backed by written approval

from the United States Department of Agriculture which monitors expenditure of promotional dollars.

Funded by a promotion deduction from the Wool Incentive Program payments and member dues, ASI will be governed by a

board of directors composed of producers and feeders. The board will set the annual promotion deduction rate, adopt the budget, consider and approve committee resolutions, amend bylaws and elect officers and members to the executive board.

Simmental Champions At Farm Show



M & M's Gold Exchange delivered a repeat performance at the 1989 State Farm Show by picking up a second grand champion title. The champion is owned by Oak Hills Farm of Butler County and Mike Messick of Dauphin. The champion was misidentified in a previous issue.



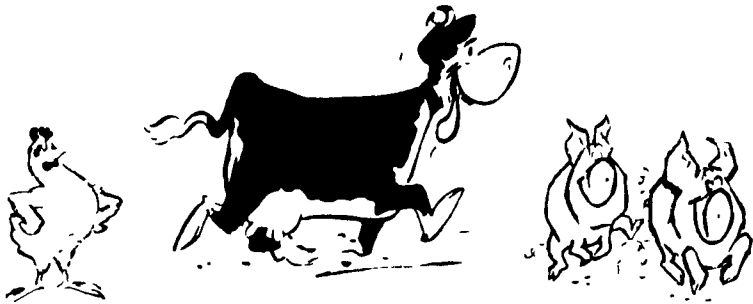
Grand champion female of the Pennsylvania State Farm Show went to MF Miss CPS X-10 owned by Mike Messick Dauphin County. Mike's sister, Sara, showed the helper. Show Judge Dr. Ron Bolze made the selection.



Windy Hills Farm of Titusville, Pa. exhibited the reserve grand champion female of the 1989 PA State Farm Show, Windy Hills Miss Triumph. Jeff Mammett, farm manager, is at the halter. The champion was incorrectly identified in a previous issue.

GIGANTIC SELECTION
In
Lancaster Farming's CLASSIFIEDS

Now Improve The Performance Of Your Livestock or Poultry



It's a fact! High quality conditioned water can greatly improve your livestock and poultry performance. Our years of experience plus hundreds of farm related treatment systems has proven the validity and practicality of correcting contaminated water.

Call us today for treatment of

- * Nitrates * Bacteria * Iron
- * Sulfates * pH - Acidity/Alkalinity



Martin Water Conditioning Co.
SPECIALISTS IN FARM WATER TREATMENT

548 New Holland Ave
Lancaster PA 17602
(717) 393 3612
Along Rte 23



740 E. Lincoln Ave
Myerstown PA 17067
(717) 866 7555
Along Rte 422

Early Morning or Evening Call 717-345-8795
We Serve PA & Surrounding States

Contact our Representatives in

So Chester Co., PA
Dick 215-932-3307

Mt. Bethel, PA
Kevin 717-897-5141

Bradford Co., PA
Joel 717-274-2174

New Milford, PA
Joe 717-465-7506

W Lancaster Co., PA
Richard 717-665-7405.

Belleville, Pa
Trennis 717-935-2786

Union County, PA
Martin, Jr 717-966-1191

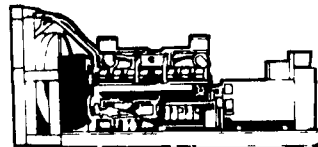
Hagerstown, Md
Allen 301-733 0458

Virginia
Ron 703-879-9958

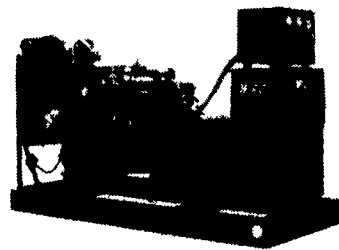


MARTIN

MACHINERY



SPECIAL SALE



~~\$6,950.00~~

\$6,450.00

(While Supply Lasts)

WINCO POWER PLANTS

- 30 KW 120/240 Volts 1 Phase
- 1800 RPM
- 225 C.U. in. Chrysler Industrial Engine
- Brushless Alternator
- A.C. Meter Panel
- Engine Guages
- Automatic Start Control Panel
- Four Light Safety Shut Down
- Main Line Circuit Breaker
- Block Heater
- Enclosure Included (Suitable For Indoor or Outdoor)

P.O. BOX 35
MARTINDALE, PA 17549
215-445-4585

RT 1 BOX 166
VERSAILLES, MO 65084
314-378-5457