

(Continued from Page A3)

\$4.08-3/4 while the March lost 8-3/4 cents at \$4.31-3/4.

ACRES CATTLE UPDATE: Live cattle closed mixed with the spot option 35 points higher while the April was 12 lower. Feeders settled from 10 to 28 points higher. February live cattle was boosted by short covering amid expectations for weight losses due to the sudden and severe change in the weather. Profit-taking was featured throughout the session with losses limited by higher fed cattle prices today. Further support was attributed to an increase in open interest yesterday and follow through buying from new contract highs yesterday. Buying in feeders was in response to a slightly high-

er cash index price this morning and weather concerns.

CME FEEDER CATTLE SETTLEMENT PRICE: 01/30/89 -\$82.95 01/27/89 -\$82.80.

ACRES NEXT DAY OUTLOOK: cash - steady to firm futures-steady.

ACRES HOG UPDATE: Live hog futures settled a little higher today gaining from 12 on the June option to 50 on the July. Buying throughout the session was in response to concerns that hog marketings would begin to slow up in the corn belt as temperatures dropped into the sub-zero ranges. Prices were underpinned by lower than expected interior receipts yesterday and today along with steady to higher wholesale product quotes. Fund related profit-taking dropped prices from session highs. Bellies were underpinned by advances in live hogs but failed to end the session in the plus column.

ACRES NEXT DAY OUTLOOK: cash - steady futures - steady.

Central U.S.

Carlot

Pork Report
Tues., Feb. 1, 1989

Report supplied by USDA

CENTRAL U.S. CARLOT PORK REPORT FOB OMAHA BASIS INCLUDES MAJOR PRODUCTION AREAS IN MIDWEST AS OF 3:00 P.M. COMPARED TUESDAY'S 3:00PM CLOSE: FRESH PORK LOINS 14-18# 2.50-3.00 HIGHER; BOSTON BUTTS GENERALLY STEADY TO FIRM; SKD. HAMS FIRM TO 2.25 HIGHER; SDLS. BELLIES STEADY TO 1.00 HIGHER. TRADE SLOW TO MODERATE FOR MODERATE DEMAND AND LIGHT TO MODERATE OFFERINGS.

LOAD 14-16# SDLS. BELLIES REPORTED AT 34.50.

LOADS PORK CUTS: 39.0.

LOADS TRIM/PROCESS PORK: 14.0.

PORK CUTS OMAHA BASIS LOINS, REGULAR FRESH

14-18* LBS. 4.5 LDS. 88.00-91.00.

1/4" TRIM 14-18 LBS. 4.5 LDS. 101.00-107.00.

BNLS LOIN

5-7 LBS. 202.00 A.

BNLS SIRLOIN

3/4-1 LBS. 158.00 B.

TENDERLOINS

2/BAG .5 LD. 285.00.

PICNICS

COMBO

4-8 LBS. 43.00 A.

8/UP LBS. 40.50 A.

BOSTON BUTTS

4-8* LBS. 3 LDS. 55.00-59.00.

1/4" TRIM 4-8 LBS. 3 LDS.

70.00-75.00.

COMBO'S 8/UP LBS. 49.00 D.

SPARERIBS FRESH

1.5-3.5 LBS. .5 LD. 103.00.

3.5-5.5 LBS. .5 LD. 87.00.

SPARERIBS FROZEN

1.5-3.5 LBS. 104.50 A.

LOIN BACKRIBS

1.75/DN LBS. 190.00 B.

1.75/DN LBS. 180.00 B.

1.75-2.25 LDS. 150.00 B.

HAMS, SKINNED, FRESH

14-17 LDS. 63.50-65.50 A.

17-20 LBS. 12 LDS. 63.50-65.75.

20-26 LBS. 6 LDS. 60.50-62.50.

26-32 LBS. 56.00 B.

32/UP LBS. 1 LD. 59.00.

BELLIES, SDLS. SKIN ON, FRESH

10-12 LBS. 29.00 A.

12-14 LBS. 1.5 LDS. 31.50-32.50.

14-16 LBS. 2 LDS. 31.50-32.50.

16-18 LBS. 5.5 LDS. 31.25-32.00.

18-20 LBS. 2 LDS. 29.50-30.50.

20-25 LBS. 25.00 D.

PORK TRIMMINGS/ BONELESS PROCESSING PORK (CHEMICAL LEAN)

COMBO 42% FRESH 17.00-18.00 A.

BOXED 42% FROZEN 2 LDS. 19.00-20.00.

COMBO 72% FRESH 5 LDS. 60.00.

BOXED 72% FROZEN 62.00 A.

PICNIC CUSHION MEAT

COMBO 92% FRESH 1 LD. 112.00.

BONELESS PICNIC MEAT

COMBO 72% FRESH 6 LDS. 60.00-61.50.

BOXED 72% FROZEN 60.50 B.

SKINNED JOWLS

15.50 E.

BOXED FROZEN 17.00 A.

NOTE! *REFLECTS 1/4" TRIMMED PRODUCT BROUGHT BACK TO A REGULAR COMMODITY BASIS.

ABCDE AFTER QUOTES REPRESENT DAYS SINCE LAST ACTUAL MARKET TEST. QUOTES ARE DROPPED AFTER 5 DAYS OF NO TEST OR BEFORE IF THEY NO LONGER REFLECT CURRENT MARKET CONDITIONS.

Jersey Shore Livestock Market, Inc.

Auction every Thursday at 4:00 p.m.

Jersey Shore, Pa.

Report supplied by Auction

Thursday, Feb. 2, 1989

RETURN TO FARM CALF

190.00-151.00.

GOOD VEAL 70.00-95.00.

COMMON VEAL 45.00-69.00.

LOW CHOICE STEERS 69.00-73.50.

SELECT STEERS 65.00-71.00.

COMMON STEERS 55.00-64.00.

COMMERCIAL COWS 48.00-54.50.

CANNERS-CUTTERS 43.00-51.00.

SHELLS 39.00-45.00.

CHOICE HEIFERS 71.00-75.50.

SELECT HEIFERS 66.00-70.00.

COMMON HEIFERS 54.00-63.00.

GOOD FEEDERS 75.00-85.00.

COMMON FEEDERS 50.00-74.00.

BULLS 55.00-68.00.

GOOD HOGS 40.00-42.85.

ATTENTION VEGETABLE GROWERS

Dutch Country Growers Cooperative is Announcing Its Annual Growers Meeting

To Be Held At 12 Noon, February 10 at our packing house Which is located at

76 Pumping Station Road, Quarryville, PA

Anyone interested in growing vegetables including peppers, tomatoes, cabbage, squash, melons, pumpkins, peas, limas, string beans, strawberries, etc. please attend meeting or contact us privately.

The following persons will be speaking at our meeting.

Bruce Hellerick, Lancaster Co. Extension Agent

Steve Carter, New Jersey Vegetable Specialist

Don Robinson, Ag Teacher

Credits for private applicators license will be awarded

DUTCH COUNTRY GROWERS

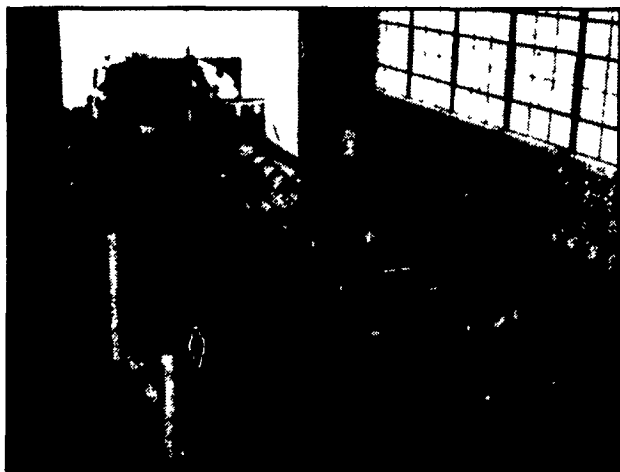
717-786-8500 or 786-8505



HIGH STEEL SERVICE CENTER INC.

A High Industries Inc. Company

STEEL FOR EVERY JOB EQUIPMENT, SHOP, MAINTENANCE, REPAIR



- ANGLES
- CHANNELS
- BEAMS
- PLATES
- TUBING
- SHEETS
- EXPANDED METAL
- FLOOR PLATE
- HR BAR
- CR BAR

BURNING - SAWING - SHEARING
SLITTING - LEVELING - BLANKING

DELIVERY OR PICKUP

PHONE 1-800-732-0346 LOCAL 717-299-8989

FAX 717-299-5155

400 STEEL WAY LANCASTER, PA 17604

PUT YOUR FARM DOLLARS TO WORK

Call a toll-free phone number to make more profit?

TRY THESE TEN IDEAS ON FOR SIZE:

1. How to plug profit leaks . . .
2. Worry-free state and national tax returns . . .
3. Accurate depreciation schedules . . .
4. Timely labor reports including W-2's . . .
5. Quarterly tax reports . . .
6. Timely completion of 1099's and 1096's . . .
7. Confidential analysis of your farm business . . .
8. "On-the-farm" accounting by professional counselors . . .
9. Complete profit and loss statement and balance sheet . . .
10. Total knowledge of your financial situation.

STILL INTERESTED?

CALL 1-800-382-1356

or Direct (717) 761-2740

8 a.m. to 4:45 p.m. Monday thru Friday

PFA FARM MANAGEMENT SERVICES

A Successful Business Service For Successful Farmers

