

**1974 Mack R-Model
Tri-Axle Dump Truck**

New brakes and drums, new rear bushings, new dump body, new king pins. Recent engine overhaul. Asking \$32,000.

Call 215-269-7325

READY TO WORK DUMPS

- 1973 LNT9000, 15' Dump, 318 detroit, 13SP.....\$14,500
- 1975 LNT900, 14' Dump, 10 SP, 477 Gas.....\$6,500

Snyder & Mylin Excavating
Willow Street, PA
717-464-2122
717-786-2275

'70 GMC 5500 Series dump truck, 350 engine, 2SP rear, 4 yard water level, runs well, needs brake booster \$1150 OBO.

'71 White 4000, 270 Cummins, RR trans. w/GRM Model Prentice loader w/Prentice rear mt. frame, powered by PTO or Allis Chalmers dsl. power unit. Truck and loader in good condition \$10,500 OBO.

'70 Fruehauf trailer, 40' tandem flatbed, good condition \$1000 OBO.

Springfield, Delaware Co., PA
215-626-2555

- 88 Ford F250 Heavy Hauler, 302, 4 Sp 8,000 Miles \$10,450
- 88 Ford Ranger Ex Cab V6, Auto, A/C Power Locks, Windows \$10,995
- 88 Ford Bronco XLT V6, 5 Speed, A/C Cruise & More..... \$13,995
- 87 Chevy Astro Van V6, Auto, 8 Passenger, A/C \$12,495
- 87 Ford Ranger XLT 4 Cyl., 5 Speed, 20,000 \$7,495
- 87 Ford Aerostar XL, V6, Auto, A/C 8 Passenger..... \$13,495
- 87 Dodge D-100 4x4 V8, Auto, A/C 27,000 Miles..... \$12,995
- 86 Chevy Astro Van, V6, Auto, 4 Captain Chairs, Rear Bench Seat \$11,995
- 86 Ford Van, 12 Passenger V8, Auto Dual A/C & Heat, Very Clean .. \$12,495
- 85 Chevy C-20 Suburban 9 Passenger, 350 V8 Auto, A/C \$11,995
- 85 Chevy S-10 Blazer V6, 5 Speed, 30,000 Miles, Beautiful \$11,995
- 84 Ford Club Wagon V8 Auto, A/C. \$7,495
- 84 Eddie Bauer Bronco II V6, Auto, A/C..... \$9,995
- 83 GMC S-15 Jimmy V6, 5 Speed 4 Wheel Drive \$6,495

THESE ARE JUST A SMALL PORTION OF OUR HUGE INVENTORY

Extended Warranties Available
Up To 3 Yr., 36,000 Miles

OUR 20TH YEAR OF QUALITY
PREOWNED CARS & TRUCKS!



9-9 WEEKDAYS • 9-4 SATURDAYS
RTE. 422, 2300 WEST CUMBERLAND ST.
LEBANON, PA
(Across From The Boscov's Mall)

**YES!!
ENGLE FORD
DOES MAKE IT EASIER!!**
Over 100 New & Used
Trucks, Vans & 4x4's

- 1989 Ford F350 4x4 Crew Cab Diesel Auto Loaded
- 1988 Ford Bronco XLT, 302, A/C
- 87 Ford F350 Crew Cab, DRW, 4x4, Centurion Conversion
- 1986 Chev C30 Utility Dump, Dual Rear Wheels, 350 4 Spd, 21,000 Miles
- 86 Ford F350 15 Pass van, V8, A/C, PS, PB, AC, Much More, 1 Owner
- 86 Ford F150 4x4 6 cyl, 4 spd, PS, PB, step side only 24,000 miles
- 85 Ford Bronco II V6, 5 Spd, PB, PS, AC Eddie Bauer Edition, 1 Owner
- 85 Ford F150 4x4, 6 cyl, 4 spd, PS, PB explorer pkg., sharp, 2 tone blue
- 78 Ford LN8000, Cab & Chassis, 3208 Dsl, 5 Spd, 2 Spd Axle, Low Mfrs

ENGLE FORD, INC.

Rt. 147 North
Millersburg, PA 17061
In PA The Call's On Us 1-800-242-8075
Out of State Call 1-717-692-4841

For Sale: Transfer Trailers, all sizes; Demolition Dumps; Used trucks, agricultural dump bodies & trailers, economy grain dumps, rollbacks & log trailers. Keith walking floors, sold & serviced 814-623-9696 or 814-623-8696

36 REAL ESTATE

235 Acre Dairy, 68 freestalls, for sale by owners in southern Somerset County. Equipment optional For farm description contact Tice Platz, Box 108, Boynton, PA 15532, 814-662-4234.

CUMBERLAND COUNTY, Greenwich Twp. 243 acre farm, \$550,000 150 acres tillable remainder in meadow and woods Land suitable for vegetables, grain, sod, or nursery. Close to Greenwich Marina

CUMBERLAND COUNTY, Upper Deerfield Twp 45 acre horse farm, nice home w/older barns and fenced pastures and water bowls in individual pastures Near Rt. 55 and Centerton Lake. Must see to appreciate. Priced to sell \$250,000. S Kelly Realty, Box 218-A, RR8, Bridgeton, NJ 08302. 609-455-8820. Eves. 609-451-1975 Jack Dare.

DAIRY FARM FOR RENT: 50 tie stalls, 2 Harvestores, 20x30 HM corn, 20x80 haylage, 6 unit pipeline milking system, feed bunk w/belt feeder, manure storage, 120 acres, remodeled mobile home w/addition, 3BR Dauphin Co. 717-362-8415

Dear Mr. Farmer. Please sell me an acre or so that I can build my future wife her dream home Please, it will be appreciated so much Prefer it to be a little South of Lancaster, near the Willow Street, or the Buck area. Will consider others nearby Reply to: Fred W. Moudy, 124 Pike Ave, Johnstown, Pa 15904

Established Annville bar in historical building w/modern handicap apartment Finish the remodeling, single story/half Palmyra home. Lancaster County lots/acerage. Sheetz Real Estate, 838-1388. Doris Grubb, 838-2456.

FOR RENT 125 acre dairy farm without house in northwest Lancaster Co. 50 stalls, pipeline. 717-367-4388.

FOR RENT, 80 Acre dairy farm, Willow Street area, Lancaster Co. with house 717-464-2651.

FOR RENT: Hackettstown 60 acres of finest soil for crops, horses, animals, etc. 201-455-1237.

FOR SALE: 136 acre river bottom dairy farm, 80+ acres tillable, 52 comfort stalls, pipeline and gutter cleaner. 600 gal milk tank, 3 silos w/unloaders, heifer pens and storage sheds. Home has 8 rooms and bath. Lycoming Co. 717-546-6546.

FOR SALE: 390 acre dairy farm, 300 tillable, good corn and alfalfa land, one large and two smaller houses, 174 free stall barn w/7 on the side Surge parlor w/HTO, 1500 gal. tank, tool sheds, bunk silo, good water supply, 140 free stall heifer barn, good roads, several milk markets, good school system 50 miles from either Rochester or Buffalo. More land available if needed \$435,000 716-237-5397.

For Sale 12x60 Mobile Home, in decent condition, complete w/kitchen & bath Reasonable 717-786-4380

For Sale 229A modern dairy farm Milking parlor, numerous out-buildings, grain storage, along main highway, possible owner financing. Somerset Co For additional info call (814)926-2176.

BEDFORD CO just off PA turnpike, 216 acres w/135 acres tillable, 22 pasture, balance woods, nice old home Operating dairy facilities consisting of 72 comfort stalls, 1100 bulk milk tank, 2 concrete silos 20x60, heifer barn, machinery shed Asking \$450,000

MIFFLIN CO 142 acres, 100+ tillable, 28 acres pasture, lovely 2 story home, dairy farm w/34 comfort stalls, 600 gal bulk tank, heifer barn, 2 stave silos 20x45 & 18x50, other out-buildings available, good spring and 2 wells Next to Big Valley on Ferguson Valley Rd Subdivision possible \$289,000 Shown by appointment only Call for information 215-399-1500.

Breezewood, PA--approx 85A farm, wood/pasture land in mountains-hunting area off I-70 Great view and borders Brush Creek 120 miles from Lancaster, 125-127 from D C and Baltimore (717)786-2993.

Carlisle PA, approx 41 6 acre farm, 4 miles south-east of Carlisle, 3 bedroom brick house, wood boiler, hot water heat w/oil furnace, 55x42 bank barn, 3 car garage, other buildings, approx. 9/10 mile road frontage, 12x57 mobile home rented Call 717-258-6124

Clinton County 20 acre farm, two story house, spring water, septic, double garage, barn, outbuildings Tylersville, call after 6PM (717)726-6377

273A Central Ohio, 254 tillable, tiled and productive, modern home, 70x88 cattle barn, \$1300/acre. HBO Realty 1-800-877-2232, ext 741.

70 acre farm about 50 tillable acres, house, barn and outbuildings excellent pond site, strong springs. Southern Columbia Co Excellent hunting area \$1,500 per acre. Call 717-799-5703

Apartment for Rent Loop Road, off 501 north. Two bedroom, living room, kitchen and bath Apt newly built Spacious parking with security lighting No pets \$375 per month plus security deposit. Available June 1st 393-0646, ask for Jess or 627-2781 after 5pm, ask for Mike.

AUCTION BARN FOR SALE. Rt 36 in Tylersburg, PA Successfully selling new and used merchandise for 17 years Owner wants to sell 45x90 building complete w/snack bar, gas heat, good lighting, with seating capacity of 350 plus It is situated in northern Clarion County, a popular camping area Just 6-miles from Cook Forest State Park Large corner lot also has a house, 4 bedrooms, 1 1/2 baths, living room, kitchen, dining room and enclosed porch. May be used as a residence or rental Great opportunity for young auctioneer. Interested parties call 814-354-2938 or evenings 814-354-2998

CALL CHARLIE BROOKS

Marlin H. Fields Real Estate
Mifflintown, PA 17059
Farms & Rec. Land
Serving 5 county area

717-436-8431 or 717-436-8839

FOR RENT: April 1, 1989 100 A. DAIRY FARM, 80A tillable, 47 tie stall barn, silos, heifer pen, beautiful pond & large home in Blainsport, Lancaster County. Monthly \$1600.

(215) 267-7120

DAIRY FARM

FOR SALE BY OWNER

105 Acre double 4-parlor, 96 freestalls, bank barn, 3 silos with unloaders, computer feeder, other out buildings, 4 bedroom remodeled house. \$332,000. York Co.

Reply to Box G3
c/o Lancaster Farming
PO Box 609, Ephrata, PA 17522

New Jersey

Authentic Colonial situated on 126 acres of land in L.A.C. Township, state of N.J. The original dwelling was built in 1700 with addition in 1785. This home has 9 rooms, 2 1/2 baths, 4 fireplaces, detached 3 bay garage. Excellent for farming and hunting with 6 ponds plus much much more. Call for an appointment.

609-678-2044

\$440,000.00

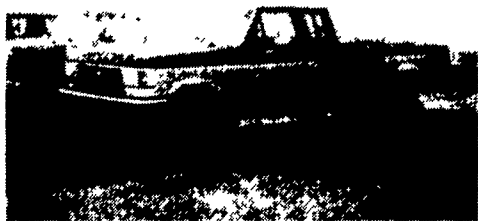
Loysville-Great farming potential! Presently dairy & grain farm. Stream on property. 2 story, 4 bedroom house with enclosed front porch. 160 acres, 143 tillable. 3 car garage, 50'x95' barn, many other buildings. \$249,900



PACE/PACE

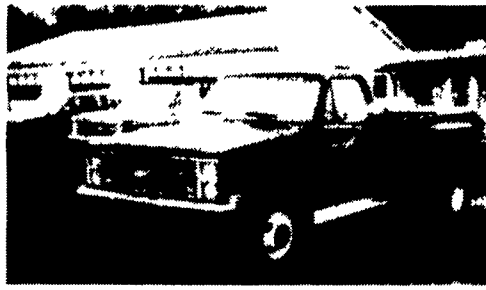
717-957-3866 717-582-8104

FOR SALE



**1988 FORD F250
XLT LARIAT**

4x4 Super Cab, 351 EFI, 5-Speed, PS, PB, PW, PDL, Cruise, Tilt, Air, AM-Fm Cass. Stereo, Dual Tanks, 8,600 GVW, Blue & Silver, 4,000 Miles With Bal. Of Factory Warranty, Like New. \$16,500



**88 CHEVY C30
SILVERADO**

Dual wheel, 4x4, 454 FI, auto, PS, PB, PW, PDL, cruise, tilt, air, AM-FM cass. stereo, dual tanks, trailering special, lock out hubs, 11,000 miles, like new \$16,900



1988 FORD F250

XLT Lariat super cab, 351 EFI, auto, PS, PB, PW, PDL, cruise, tilt, air, AM/FM stereo, dual tanks, 5000 miles with bal. of 6 year 60,000 mi. warranty, like new \$14,900



1988 CHEVY SILVERADO

3500 dual wheel pickup, 350 EFI, auto, PS, PB, PW, PDL, cruise, tilt, air, AM/FM stereo, 6,000 mi. with bal. of factory warranty, red & silver, like new \$13,900

A & J AUTO SALES

798 East Main Street - Rt. 322 East
Ephrata, PA 17522

Specializing In Late Model, Low Mileage Trucks
717-733-2873