

CARPET TRUCK & CAR Cut & Sewn To Fit Low As \$3995 For Trk Details & Order Form In Free Catalog	PROFESSIONAL TOOL BOXES Low As 1/2 The Price From The Truck Tool Salesman & We'll Charge It On Visa Or MC Details In Catalog	YOU GOTTA STOP OUT AND SEE THIS PLACE!!! WE'RE OPEN EVERY DAY (Please Call For Holiday Hours) FREE CATALOG	Quality AM-FM Cass Indash Stereo \$3495 Also Speakers & EQ's 90 Day Over The Counter Exchange Warranty On All Electronic Purchases!!!	S Cobra TRAPEZOIDER uniden COBRA/WHISTLER Radar CB's \$74 95 CB's \$39 95 90 Day Over The Counter Exchange Warranty On All Electronic Purchases!!!
PARTS WASHERS \$9995 & UP 16 In X 12 In To 48 In X 22 In Also Accessories	115 VOLT MIG WELDERS \$299 & \$469 AC WELDERS \$12995 115V \$12995 230V \$18995 Accessories	SKIL "Electric" 6 1/2 Circular Saw \$39 95 7 1/4 Circular Saw \$49 95 7 1/4 Worm Drive Circular Saw \$119 95 Cordless Screw Driver \$17 95 Cordless Drill/Driver \$29 95 4 1/2 Disc Grinder \$29 95 Much Much More In Catalog!	Fast Moving Auto Parts From - AG Disco TRAC Bendix & More	Performance & Accessory Parts From - Mokey DEZE & More
GLASS BEAD CABINET 36 Wide U.S. Made Reg. 7 CFM Air Supply \$59900 Details In Catalog	Pressure Type SAND BLASTERS #40 \$155 #70 \$199 #100 \$249 #200 \$569 Details In Catalog	INGERSOLL-RAND. "Pneumatic" PROFESSIONAL TOOLS 1/2 In. Dr. Impact \$64 95 3/4 In. Dr. Impact \$224 95 DA Sander 6 In \$69 95 Air Hammer H D \$37 95 Much Much More In Catalog	KIRKER AUTOMOTIVE FINISHES Sold In Over 45 Diff Colors Factory Packed By The Gallon Most Colors \$28 95 Gal Red Tints \$28 95 Gal Hardner \$10 95 Pint	SAVE \$\$\$ Body Filler \$31 95 Case Deluxe Masker \$59 95 Also Save On Sandpaper Tape & More
100'S OF HAND TOOLS & EQUIPMENT!!!	SUPER DUTY VISES AND ANVILS 6 In. Swivel Base \$8995 6 In. With Rotating Head \$9995 220 lb Anvil \$17995	4 1/2 In. Metal Bandsaw \$165 00 14 In. Wood Bandsaw \$240 00 16 Spd Floor Drill \$180 00 4000 lb Crane \$299 00 600 lb Engine Stand \$39 95 6 Ton Jack Stands Pr \$34 95 1000 lb Trans Jack \$269 00 2 1/2 Ton Floor Jack \$89 95 1 - YEAR GUARANTEE Much Much More In Catalog	PICK-UP TR "NEW" FENDERS Also Similar Savings On: Fuel Panels, Hoods, Bumpers Etc For Many Trucks & Cars!! CHEVY \$39 95 73-80 \$39 95 S 10 \$49 95 S 10 Truck \$49 95 FORD \$39 95 73-79 \$39 95 60-66 \$39 95 67-68 \$39 95 RANGER & BRONCO II \$39 95 COURIER \$39 95 DODGE \$39 95 72-80 \$39 95 DATSUN & TOYOTA \$29 95 \$39 95	REAR QUARTERS * Die Stamped Panels 67-81 Camaro 70-72 Chevelle 66-80 Nova 64-68 Mustang 69-85 Ea * Hand-Machined Formed Panels 55-57 Chev 62-67 Nova 64-72 Chevelle & El Camino 64-67 GTD 55-57 T Bird Also GTX Roadrunner Cuda Challenger
36 In. 18 Gauge SHEET METAL BRAKE Super Quality - \$13995 Optional Stand - \$2495	HYD. POWER 1-YEAR GUAR. 4 Ton \$12995 /10 Ton \$17995	PICK-UP TRUCK "NEW" HORNATORS Chevy 2 Row \$79 95 Chevy 3 Row \$89 95 Popular Ford Heater Cores Popular Numbers All \$27 95	PICK-UP TRUCK "NEW" WINDSHIELDS 73-87 Chevy w/Antenna \$89 95 S 10 Blazer \$121 95 Ford \$89 95 & up	100'S OF AUTO BODY RELATED ACCESSORIES AND SUPPLIES!!!

"FREE CATALOG" CALL Or WRITE

AIR COMPRESSORS

5 HP ASME CODED TANKS, FROM **\$599 To \$1,129**
 7-1/2 HP 80 Gal. TANK, SINGLE PHASE MOTOR! **\$1,299**

ALL UNITS COME WITH MAG-STARTER MOUNTED & WIRED IF REQUIRED.




DEPARTMENT 002
 4294 EAST HARRISBURG PIKE
 MIDDLETOWN, PA 17057
 AND
 ON U.S. RT. 22 & 322
 21 BENVENUE ROAD
 DUNCANNON, PA 17020

DIRECTIONS TO OUR LOCATIONS ON YOUR MAP MIDDLETOWN- Get on Rt 283 Between Lancaster and Harrisburg Take The Rt 230 & 341 Ext. Go east on Rt 230 1 1/2 mi on right DUNCANNON - Find the junction point of the Susquehanna & Juniata Rivers We are on 22 & 322 at the west end of the Susquehanna bridge across from the Clarks Ferry Truck Stop


HOURS:
 Eastern Mon-Thurs 9 AM - 6 PM
 Standard Fri-Sat 9 AM - 8 PM
 Time Sunday 11 AM - 4 PM
 MIDDLETOWN
 PHONE (717) 944-0318
 DUNCANNON
 PHONE (717) 834-9592

TRAILERS "Big & Little"

STANDARD FEATURES ON ALL TRAILERS - EXCEPT NO-FRILLS
 * Spare Tire (Mounted) w/Axle Jack & Lug Wrench * Fully Wired To D.O.T. Lighting Specs. w/Safety Chains * Fully Primed & Finished In Acrylic Enamel w/Urethane Hardener, Various Colors Available * 2 5/16" Coupler w/All Wheel Electric Brakes On Models Over 3000 G.V.W., 2" Coupler & No Brakes Required On Models Under 3001 G.V.W., Pintal Hook On 9-Ton Model * Inner Fender Closed to Help Control Road Splatter




CAR HAULER - **\$1299**



9-TON, 3-AXLE- **\$2799**

12' OR 16' UTILITY **\$799 & \$1299**



NO-FRILLS **\$459 & \$569**

Custom Vans
 XLT
 Grand Marquis
 Marquis

Lynx
 Topaz
 Diesel Pickups
 Mustang
 T Bird

Mark VII - Pickups - Broncos - Bronco II - Stake Body - Crew Cab -

SHEEHY FORD LINCOLN MERCURY INC.

For All Your Farming Transportation Needs Through The F800 Series

BRONCOS DIESEL PICKUPS CHASSIS CAB CARGO VANS 4x4 RANGERS PICKUPS
 BRONCO II SUPER CAB CREW CAB STAKE BODY BOX VANS XLT CUSTOM VANS

SHEEHY HOTLINE 717-272-7671

Unless This Emblem Is On Your Car Or Truck You Probably Paid Too Much

SHEEHY LEBANON

9-9 Daily
 9-5 Sat.
 717-272-7671

Parts Dept. Open
 Daily 8-5
 Sat. 8-12
 717-273-8168

20th & Cumberland St. - Lebanon

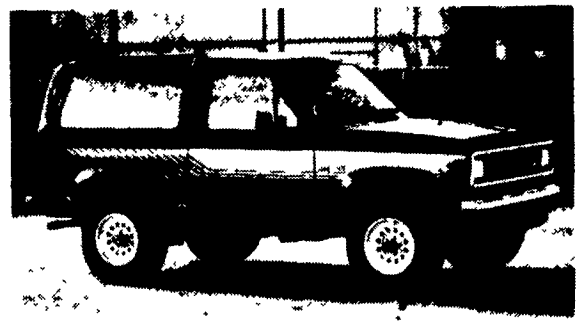


1988 Ranger



4 WD Pickups In Stock

4th Annual
 End Of Year
 Sale On Every
 1988 And 1989
 Truck In Stock
 Saving Of
\$800 to \$3,000



1988 Ford Bronco II



Snow Plows Arriving Daily

Tempo - Cougar - Continental - Town Car - 4x4 - Box Van - Rangers -