

For Sale: Transfer Trailers, all sizes; Demolition Dumps; Used trucks, agricultural dump bodies & trailers, economy grain dumps, rollbacks & log trailers. Keith walking floors, sold & serviced. 814-623-9696 or 814-623-8696  
 JD tractor lift, runs good, \$7,500. OBO.  
 215-538-1945

**READY TO WORK DUMPS**  
 1973 LNT9000, 15' Dump, 318 Detroit, 13SP.....\$14,500  
 1975 LNT900, 14' Dump, 10 SP, 477 Gas.....\$6,500  
**Snyder & Mylin Excavating**  
 Willow Street, PA  
 717-464-2122  
 717-786-2275

WE TRADE Phone: (717) 653-5253  
**Ishler's TRUCK CAPS**  
 on Route 230  
 2 miles east of Mount Joy  
 Open Daily 9-8, Sat 9-4  
 • New and Used Caps • Repairs  
**CUSTOMLINER**  
 Lifetime Warranty  
**WINTER SPECIAL**  
**BED LINERS \$159.00**  
 w/Free Installation

Lancaster Farming, Saturday, January 14, 1989-E33



**1984 GMC Top Kick**  
 With: new Jerr-Dan Heavy Duty 24' Super 10 Equipment, Rollback with Wheel Wells and covers, 3208 CAT, 5-2 Spd. Rear, Air Brakes, 33,000 GVW, Power Steering, 60,000 Miles. Clean Truck, Ready to Use.  
 Accept All Trades.  
 Call Jeff at  
 717-597-3121  
 or 717-597-9400

**THE RIGHT TRUCK AT THE RIGHT PRICE!**

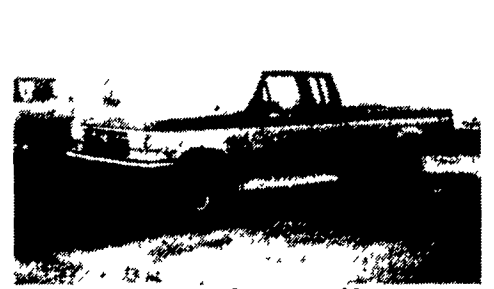
IT'S NOT JUST A TRUCK ANYMORE. GMC TRUCK



**GMC SAFARI MINI-VAN**  
 When A Station Wagon Isn't Enough!  
 • TINTED GLASS • 4.3 LITER V-6 • RALLY WHEELS  
 • BODY SIDE • 4 Spd. AUTOMATIC • 8 PASSENGER  
 MOLDINGS w/OD SEATING  
 • PULSE WIPERS • AUXILIARY LIGHTING • CRUISE CONTROL  
 • AIR CONDITIONING • AM/FM STEREO • TILT WHEEL  
 Customer Price  
**\$255/Mo**  
 \*Excluding Tax & Tags, Based on 60 Mos. Closed-End Lease.

'70 GMC 5500 Series dump truck, 350 engine, 2SP rear, 4 yard water level, runs well, needs brake booster \$1150 OBO.  
 '71 White 4000, 270 Cummins, RR trans. w/GRM Model Prentice loader w/Prentice rear mt. frame, powered by PTO or Allis Chalmers dsl. power unit. Truck and loader in good condition \$10,500 OBO.  
 '70 Fruehauf trailer, 40' tandem flatbed, good condition \$1000 OBO.  
 Springfield, Delaware Co., PA  
**215-626-2555**

**FOR SALE**



**1988 FORD F250 XLT LARIAT**  
 4x4 Super Cab, 351 EFI, 5-Speed, PS, PB, PW, PDL, Cruise, Tilt, Air, Am-Fm Cass. Stereo, Dual Tanks, 8,800 GVW, Blue & Silver, 4,000 Miles With Bal. Of Factory Warranty, Like New. \$16,500



**88 CHEVY C30 SILVERADO**  
 Dual wheel, 4x4, 454 FI, auto, PS, PB, PW, PDL, cruise, tilt, air, AM-FM cass. stereo, dual tanks, trailing special, lock out hubs, 11,000 miles, like new \$16,900



**1987 CHEVY C30**  
 Dual wheel, with 9 ft. Stahl utility body, 350 4-speed, PS, PB, AM-FM, 500 original miles, like new \$13,900



**1986 DODGE D250**  
 HD 3/4-ton, 4x4, 360 4-speed, PS, PB, 8510 GVW, 7000 original miles, like new. \$9,800

**A & J AUTO SALES**  
 798 East Main Street - Rt. 322 East  
 Ephrata, PA 17522  
 Specializing In Late Model, Low Mileage Trucks  
 717-733-2873

**USED TRUCK SPECIALS**

'84 NISSAN LONG BED 5 Spd, PS, PB, Tan <b>\$3,000</b>	'85 CHEVY SUBURBAN C20 4x4 SILVERADO Red, 44,856 Miles <b>\$13,900</b>
'83 CHEVY 3/4 TON 8 Cyl, AT, PS, PB, A/C, 43,000 Miles <b>\$8,000</b>	'84 CHEVY 1/2 TON 8 Cyl., AT, Loaded, 68,000 Miles <b>\$7,000</b>

NOBODY ELSE COMES CLOSE  
**JONES GMC TRUCKS**  
 Tax & tags extra.  
 1335 Manheim Pike Lancaster, PA  
**(717) 394-0711**

**McDONNELL DOUGLAS TRUCK SERVICES INC. USED TRUCK CENTER**

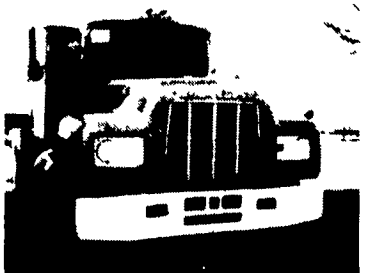
Lancaster, PA • (717) 569-2648 • Call Ray Leed



**INTEGRAL**  
 (1) 1985 Volvo White, Integral Conv. Slip, 3408 CAT, 9 Spd, PS, AC, Air Ride Cab, Spring Susp.  
 Reduced To \$37,000



(3) 1985 LTL-9000 Ford, NTC 350, 9 Spd, PS, AC, Spring Susp., 36" Slip, Super Clean \$37,000



(1) 1984 Mack R680ST, 300 Mack, 5 Spd., P/S, A/C, 36" Spr., Low Miles  
 Reduced To \$33,500



**REEFER**  
 1983 IHC, DT466, PS, 5 & 2 Spd, 12' Reefer Body, w/Diesel Tk Unit & Elect Stby  
 Reduced To \$13,500

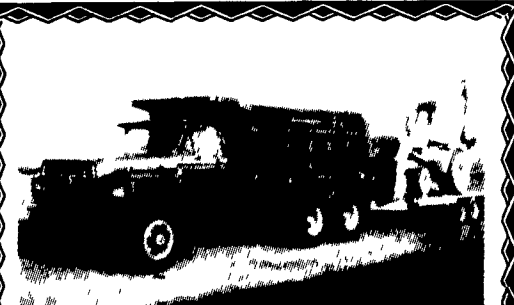


**REEFER**  
 (2) 1981-1982 IHC, S1954, PS, 5 Spd, 20' Reefer St Tk, Prices Starting At \$12,500



**REEFER**  
 (3) 1981-1983 Ford LN8000, 18' Reefer St Tk, w/Diesel Tk Units & Elect Standby  
 Prices Reduced

**OTHER MAKES AND MODELS TO CHOOSE FROM**



**1985 Ford F-800 Tandem Axle Dump**  
 3208T CAT. 210 HP (Reworked)  
 13 Speed Transmission  
 Air Brakes, 10:00-Rubber,  
 15 Ft. Peobody Gallon Steel Bed  
 Ready to Work

**1977 Long Backhoe**  
 Diesel, Automatic  
 1700 Hrs., New Front Tires  
 Also

**1977 General Tri Axle Trailer**  
 - Will Separate -  
 Accept all trades

**MASON-DIXON TRUCKS & CARRIERS**  
 Call 717-597-3121 9 to 5  
 or 717-597-9400