



(Continued from Page A3)

today's session from 20 points higher on the September to 35 points lower on the January option.

CME FEEDER CATTLE SETTLEMENT PRICE: 01/09/89 -\$84.53 12/22/88 -\$83.37.

ACRES NEXT DAY OUTLOOK: cash - steady futures-steady.

**ACRES HOG UPDATE:** Live hog futures settled lower this afternoon with the February option leading declines. Selling was in response to weak cash fundamentals with many packers refraining from bidding because of unprofitable margins. Short covering late in the session boosted prices off session lows with further support linked to winter storm conditions in parts of the midwest. Bellies eased lower today but closed off session lows on late short-covering. February live hogs closed 75 points lower at \$45.42 after touching \$45.25 earlier in the day.

ACRES NEXT DAY OUTLOOK: cash - steady to weaker futures - steady to lower.

**Oklahoma City  
Feeder Cattle  
Report**

Oklahoma City, Oklahoma  
Wednesday, January 11, 1989

**OKLAHOMA NATIONAL STOCKYARDS:**

WEEKLY CATTLE SUMMARY: COMPARED WITH LAST WEEK--- FEEDER STEERS AND STEER CALVES UNDER 600 LBS. \$2.00-\$3.00 HIGHER; STEERS OVER 600 LBS. STEADY TO \$1.00 HIGHER. FEEDER HEIFERS AND HEIFER CALVES FIRM TO \$2.00 HIGHER. BULK OF FEEDERS COMING OFF OF WHEAT PASTURES; GOOD PERCENTAGE ARE FLESHY. IDEAL, OPEN WINTER WEATHER FOR CATTLE HAS RESULTED IN VERY GOOD GAINS. HOWEVER, LACK OF RAIN HAS CAUSED SLOW WHEAT GROWTH. PASTURES HAVE BEEN GRAZED SHORT IN SOME AREAS, ESPECIALLY IN THE WESTERN ONE-THIRD OF THE STATE. EXODUS OFF WHEAT HAS STARTED AND WILL CONTINUE TO BE EARLY THIS YEAR IF THESE CONDITIONS PERSIST. SLAUGHTER COWS \$1.00-\$1.50 LOWER THAN LAST WEEK. PACKER AND COUNTRY BUYERS COMPETING FOR COW NUMBERS. SLAUGHTER BULLS CLOSED FIRM TO \$1.00 HIGHER. DEMAND CLOSED GOOD FOR BOTH FEEDER AND SLAUGHTER CATTLE WITH TRADE ACTIVE. RECEIPTS THIS WEEK 16,819; LAST WEEK 2,404; LAST YEAR 1,300 DUE TO AN ICE STORM THAT MADE LIVESTOCK MOVEMENT NEAR IMPOSSIBLE. SUPPLY INCLUDED 65% YEARLING FEEDERS; 28% FEEDER CALVES; 7% COWS & BULLS.

FEEDER STEERS: MEDIUM AND LARGE FRAME 1, 200-300 LB. \$115.00-\$128.00; 300-400 LB. \$112.00-\$118.00; 400-450 LB. \$103.00-\$114.00; 450-500 LB. \$98.50-\$106.00; 500-600 LB. \$90.00-\$100.50; 600-700 LB. \$85.75-\$91.00; 700-800 LB.

\$83.00-\$87.50; 800-900 LB. \$80.50-\$85.00; 900-975 LB. \$77.50-\$81.50. HOLSTEINS LARGE FRAME 2: 375-425 LB. \$89.50-\$90.50; 525-575 LB. \$76.75-\$77.75; 625-675 LB. \$72.50-\$75.00; 700-800 LB. \$70.50-\$73.00; 825-975 LB. \$65.75-\$70.50.

FEEDER HEIFERS: MEDIUM AND LARGE FRAME 1, 300-400 LB. \$92.50-\$102.00; 400-500 LB. \$87.50-\$92.50; 500-600 LB. \$82.00-\$88.00; 600-700 LB. \$80.50-\$83.00; 700-800 LB. \$77.50-\$82.00; 800-900 LB. \$74.75-\$79.00.

SLAUGHTER COWS: BULK CLOSING LEVELS--CUTTER, BONING & BREAKING UTILITY 1-3 \$45.75-\$50.00, HIGH-DRESSING \$49.00-\$53.50. CANNER AND LOW DRESSING CUTTERS \$39.00-\$44.00.

SLAUGHTER BULLS: BULK CLOSING LEVELS--Y.G. 1, 1300-2100 LB. \$55.50-\$60.00, HIGH DRESSING & BONING \$60.00-\$66.75.

REPLACEMENT COWS: PRE-TESTED FOR BANGS, PREGNANCY, AND AGE. MEDIUM AND LARGE FRAME 1 MUSCLED COWS-- 4-7 YEAR OLD 800-950 LB. 4-7 MONTHS BRED \$59.75-\$65.00/CWT. CONSIGNMENTS WITH CLOSELY SPACED CALVING DATES \$72.00-\$81.25/CWT. 7-10 YEAR OLD 825-1100 LB. 4-8 MONTHS BRED \$48.25-\$58.25/CWT. 10+ YEAR OLD 875-1075 LB. 4-8 MONTHS BRED \$45.00-\$51.25/CWT.

**Westminster  
Livestock Auction**

Hagerstown, Md.

Tuesday, Jan. 10, 1989

Report supplied by auction

SLAUGHTER COWS: HIGH YIELD: 48.00-49.00, 1 to 52.75; UTILITY

44.00-48.00; CANNERS 39.00-44.00; SHELLY 39.00 DOWN.

BULLS: YG#2 1300-1700 LBS. 54-56.75 1 STAND. @ 50.75

FED STEERS: 1050-1250 LBS. CHOICE 70-74; SELECT 65-71; STAND. TO SELECT 1500-1900 LBS. 55-65.

FED HEIFERS: 800-1000 LBS. SELECT TO CHOICE 60-65; UTILITY 47-52.

VEAL CALVES: 140-350 LBS. CHOICE 95.00-110.00; GOOD 80.00-95.00; CULLS 80-120 LBS. 68.00-75.00; 50-80 LBS. 60.00-68.00.

FARM CALVES, HOLSTEIN BULLS: 100-120 LBS. UP TO 150 BULK 120.00-146.00; 90-100 LBS. 85.00-115.00.

HOLSTEIN HEIFERS: 85.00-119.00; BEEF X BULLS TO 107.00; HEIFERS 75.00-80.00.

BUTCHER HOGS: US#1 & 2 220-250 LBS. 45.35; US #1 & 3 43.00-44.25; 260-280 LBS. 37.00-40.50; 300-365 LBS. 33.50-39.50.

SOWS: 300-500 LBS. 30.00-34.75; 500-700 LBS. 32.00-35.50; THIN SOWS 28.00-30.75.

BOARS: 28.00-30.75; THIN OR ROUGH 23.00-27.00.

STOCK CATTLE: STEERS 300 LBS. 85.00-100.00; 400 LBS. 80.00-89.50; 600 LBS. 69.00-78.00; 900-1000 LBS. 61.00-71.50.

HEIFERS: 300-450 LBS. 70.00-82.00; 1 AT 89.00; 500-700 LBS. 60.00-68.00, 2 AT 75.00; 700-950 LBS. 58.00-64.50.

BULLS: (1) 300 LB. @ 91.00; 400-600 LBS. 78.00-86.00; 600-700 LBS. 65.00-72.00.

LAMBS: 120-140 LBS. 52.00-65.50; 140-200 LBS. 46.00-47.00.

SHIIP: 30.00-33.00.

GOATS: LARGE 55.00-76.00; FLESHY 35.00-50.00; MEDIUM 40.00-55.00; THIN 20.00-35.00.

PIGS AND SHOATS: BY THE HEAD, 15-30 LBS. 13.00-17.00; 30-50 LBS. 17.00-28.00; 50-70 LBS. 25.00-37.00; 70-100 LBS UP TO 45.00.

BY THE POUND: 1 LOT 81 LBS. @ 47.00; 150-190 LBS. 30.00-38.50.

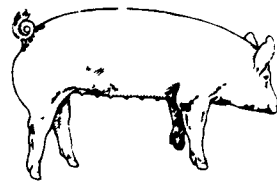
# Limited Addition



Agway Silage Fresh Bacterial Inoculant, Silage Enzyme Additive (soluble), and new Silage Fresh Enzyme Additive (soluble) help you with good silo management, controls fermentation—improves dry matter recovery, palatability, digestibility and better

Buy today, from your Agway Farm Enterprise Salesperson or Agway store. Quantity discounts are unlimited—but time isn't. Sale ends January 31, 1989.

Agway Farm Enterprise Service



**EMERY'S  
BUYING  
STATION**

**OPEN TO RECEIVE  
YOUR MARKET HOGS**

**AT THE GREEN DRAGON MARKET  
RD 4, EPHRATA, PA 17522  
1 MILE NORTH OF EPHRATA  
ON NORTH STATE STREET.**

**HOURS: MONDAY, TUESDAY, and  
WEDNESDAY 7:00 A.M. to 11:30 A.M.**

215-458-5677 Residence  
717-733-9648 Office

**YOU ARE PAID FOR YOUR  
HOGS IMMEDIATELY**

Ken & Lois Emery, Proprietors

**Green Dragon  
Livestock Sales**



Location: Ephrata RD 4. 1 mile N. on North State St., Ephrata.

**COWS COWS COWS  
SALE EVERY FRIDAY**

Lots of good Northern Feeder & Stockers. Slaughter Cows - Bull Steer, Veal-lamb.

11:00 A.M.-Beef Sale 200-300 each week.  
1:00 P.M.-Dairy Sale.

7:00 P.M.-Small Animal Sale.

For Special Sales and Herd Dispersals on farm or at our barn or other market information call: Office 717-733-2444, Home 717-838-4318.

**WALTER H. RISSER, Proprietor**

All out of state and new buyers must have cash or certified check or current letter of credit from bank.