

Carlisle Livestock Market

Carlisle, Pa.

Tuesday, Jan. 3, 1989

CATTLE: STEERS: STRONG DEMAND! CHOICE 73.25-75.60; GOOD-LOW CHOICE 67.00-72.50; MEDIUM 61.75-66.85. **HEIFERS:** CHOICE NONE OFFERED; GOOD 66.00-66.75; GOOD HOLSTEINS 57.25-61.50. **COWS:** ACTIVE! EARLY-BIRD PENS 3.00 HIGHER. HIGH YIELD 49.25-52.50; GOOD 47.00-49.00; MEDIUM 45.00-46.85; BIG MIDDLE 43.00-46.50; SHELLY 42.00 & DOWN. **FAT BULLS:** MEDIUM 50.25-56.25. **STEERS--** (400-850 LBS.) MOSTLY HOLSTEINS OFFERED, GOOD 72.00-84.00; MEDIUM 65.00-71.00. **HEIFERS (ALL WEIGHTS) MOSTLY HOLSTEINS OFFERED.** GOOD 64.00-68.00; MEDIUM 48.00-59.00. **BULLS (ALL WEIGHTS) MOSTLY HOLSTEINS OFFERED,** GOOD 70.50-76.50; MEDIUM 60.00-69.00.

VEAL CALVES: CHOICE 90.00-110.00; GOOD 83.00-89.00; MEDIUM 74.00-82.00; LIGHT/WEAK 72.00 & DOWN; **FARM BULLS** MOSTLY 135.00-165.00; **FARM HEIFERS** 90.00-114.00. **HOGS: BARROWS & GILTS** 2.00 LOWER. US NO. 1-3 210-250 LBS. 42.35-43.50; UNDER 210 LBS. 2 & 3'S (ALL WEIGHTS) 33.75-41.50. **SOWS:** 3.00 HIGHER. OVER 450 LB. 30.50-33.25; UNDER 450 31.25-35.00; 2 & 3'S 23.00-28.50. **BOARS: HEAVY** 24.75-25.25, UNDER 300 LBS. 30.50-32.50. **FEEDER PIGS (BY THE HD) ACTIVE** (20-25 LBS. 16.00-28.00) (30-50 LBS. 30.00-45.00 HD.) **SHEEP: LAMBS ACTIVE.** GOOD & CHOICE (55-75 LBS. 93.00-101.00); GOOD & CHOICE 80-120 LBS. 80.00-91.00; MEDIUM 63.00-79.00. **GOATS (LG.)** 75.00-80.00; (HD) SM./MED. 27.50-47.50. **NOTICE: SALE EVERY TUES. EVENING 7:00 P.M., LIVESTOCK 5:30**

P.M., RABBITS, POULTRY & EGGS. NEXT STATE GRADED FEEDER PIG SALE FRIDAY, JAN. 13TH 1:30 P.M.

Four States Livestock

Hagerstown, Md. Wed., Jan. 4, 1989

Report supplied by Auction **SLAUGHTER: FED STEERS** LOW CHOICE 68.00-71.00; SELECT 62.00-70.00; STANDARD 55.00-62.00. **FED HEIFERS:** 800-1050 LBS. CHOICE 65.00-70.00; SELECT 55.00-62.00; **DAIRY CULLS** 45.00-50.00. **COWS: HIGH YIELD** 48.00-50.00, FEW TO 52.50; **UTILITY-**

COMMERCIAL 44.00-48.00; **CANNER-CUTTER** 40.00-44.00; **SHELLY** 40.00-DOWN. **BULLS: FAT BEEF TYPE** 52.00-54.75. **VEAL CALVES:** GOOD 84.00-94.00; **CULLS** 80-120 LBS. 68.00-75.00; 60-80 LBS. 63.00-70.00. **HOLSTEIN BULLS:** 95-125 LBS. 115.00-147.00; 90-95 LBS. 75.00-100.00. **HOLSTEIN HEIFERS:** 90.00-118.00. **BEEF X: UP TO** 95.00. **LAMBS: CHOICE** 85 LBS. AT 78.00. **STEERS MEDIUM AND LARGE FRAME:** 300-500 LBS. 73.00-80.00; 600-800LBS. 64.00-79.50; 800-1000LBS. 60.00-70.00. **HOLSTEIN AND HOLSTEIN X STEERS:** 200-400 LBS. 69.00-77.00;

400-600 LBS. 58.00-73.00. **HEIFERS:** 400-600 LBS. 64.00-76.00; 600-800 LBS. 60.00-69.00; 800-900 LBS. 57.00-67.00. **BULLS** 400-600 LBS. TO 72.00; 800-1000 LBS. TO 62.00. **DAIRY REPLACEMENTS: SPRINGING HEIFERS** 600.00-800.00. **PIGS AND SHOATS: BY THE HEAD:** 20-30 LBS. 15.00-23.00; 30-40 LBS. 20.00-28.00; 19 HEAD, 63 LBS. AT 33.50; **BY THE POUND** 160-195 LBS. 33.00-38.00. **STOCK BOARS:** 230 LBS. AT 32.50. **SLAUGHTER HOGS:** 215-245 LBS. 41.00-42.00; 4 HEAD 280 LBS. AT 42.00; 2 HEAD 300 LBS. AT 40.00. **SOWS:** 500-650 LBS. 33.00-37.50. **BOARS:** 26.00-27.25.

OUR BUSINESS IS SERVICE TO FARMERS

Let us help you build a successful marketing program!

Call: **717-761-2740**
800-382-1356



Grains & Livestock

- Forward Contracting • Hedging Services

CFS PFA COMMODITY FUTURES SERVICE, INC.

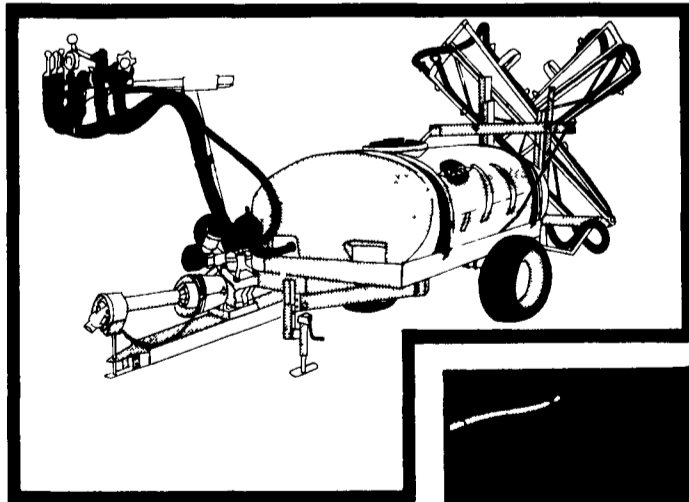
SEE US AT THE PA FARM SHOW

HARDI TL Trailer Sprayers

...performance

HARDI - The World Leader

Quality assurance - all components are manufactured in-house with state of the art production equipment



Sprayer with a built-in future

Add special HARDI features and options .. when you need them.

- Available in 300 or 500 US gallon single axle, and 500 gallon tandem axle models
- Self levelling booms from 35' to 45' (or the 28' standard boom).

An affordable, basic sprayer equipped with many features and built to the same tough engineering standards as HARDI's more sophisticated models.

Foam Marker

- Highly visible foam drops
- In-cab controls
- Many other accessories available



Mon.-Fri.
7:30 AM to 5:30 PM
Sat.
7:30 AM to Noon

HARDI

(717) 354-4731

110 S. Railroad Ave. • New Holland, PA 17557

ATTENTION TOBACCO GROWERS

Golden Leaf Tobacco Company Will Be In Our New Location MARTIN'S SALE BARN

2 Miles east of Intercourse at the junction of New Holland Rd. & Rt. 340, (the original Pennsylvania Tobacco Auction Barn) starting Monday, November 28, 1988

We invite each of you to contact us from 8 a.m. to 5 p.m. daily at our new telephone number

717-768-3074

for new developments & prices for your 609 tobacco crop.

We feel our reputation, to be one of the most honest & reliable dealers in Lancaster Co., guarantees you rewarding sales for your 1988 609 tobacco crop. We ask only that you call our company before you sell.

For those of you who desire to sell your tobacco at auction, we promise our full support in the auction system as we have since its opening in 1985. We also support private sales if you, the farmer, so desire.

We advise you to grade your tobacco by color and not too damp for top prices.

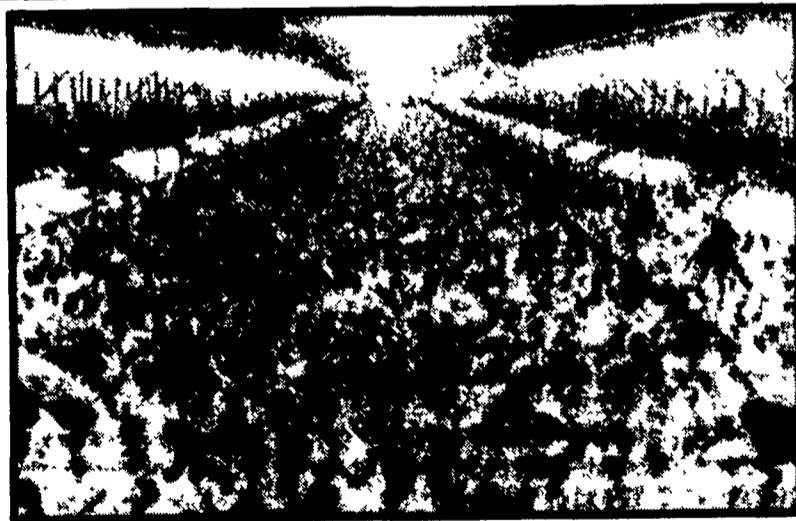
The outlook is good, please consider us as your buyer this year.

Mac Bailey

Golden Leaf Tobacco Company
PO Box 218, Intercourse, PA 17534

MELHORN SALES, SERVICE, TRUCKING CO.

1010 W. Main St., Mount Joy, PA 17552



Four 50,000 Size Single Age DEKALB Breeder Flocks Managed Under The DEKALB Certified Breeder Program.



The only full service company, in this area, to handle the total needs of the poultrymen.



For More Information Phone:

717-653-1102

Monday - Friday 8:30 AM - 4:00 PM

