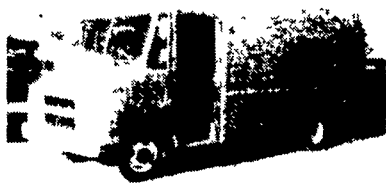




15 Window Vans To Choose From. 5 Pass to 15 Pass. 1984 to 1987.



1988 - Chev G20, cargo, 7,800 miles, AT, PS, PB, 33 gal. tank.



1987 Chev P30 stepvan, 350, V8, AT, PS, PB, 40,000 mile, new tires front, alum. body.

**FOUR WAY AUTO SALES**

New Holland, PA 17557

717-354-9422  
717-354-3199



1986 Dodge D250 royal, SE, 318, AT, PS, PB, PW, PL, 16,000 miles.

**FOR SALE**



**88 CHEVY C30 SILVERADO**

Dual wheel, 4x4, 454 FI, auto, PS, PB, PW, PDL, cruise, tilt, air, AM-FM cass. stereo, dual tanks, trailering special, lock out hubs, 11,000 miles, like new

**\$16,900**



**1988 CHEVY C30**

With 12 ft. Reading stake body, 350 4-speed, PS, PB, new with factory warranty.

**\$13,500**



**1987 CHEVY C30**

Dual wheel, with 9 ft. Stahl utility body, 350 4-speed, PS, PB, AM-FM, 500 original miles, like new

**\$13,900**



**1986 DODGE D250**

HD 3/4-ton, 4x4, 360 4-speed, PS, PB, 8510 GVW, 7000 original miles, like new.

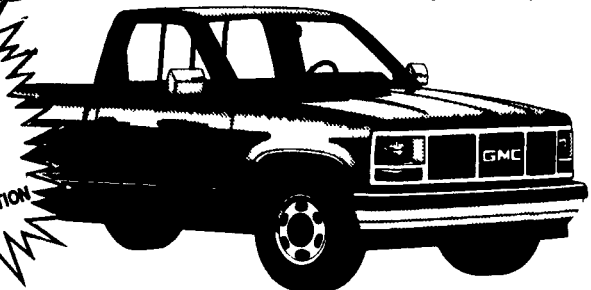
**\$9,800**

**A & J AUTO SALES**

798 East Main Street - Rt. 322 East  
Ephrata, PA 17522

Specializing In Late Model, Low Mileage Trucks  
**717-733-2873**

**THE RIGHT TRUCK AT THE RIGHT PRICE!**



**FREE**  
3,000 mile service!  
Includes:

- LUBE
- OIL & FILTER
- FREE LIFETIME STATE INSPECTION FEE

**GMC Sierra SLE Pickup**

Sierra Classic, Two Tone Paint, Automatic, V8, EFI, Power Steering, Power Brakes, Air Conditioning, AM/FM Stereo, Cassette, Power Windows & Locks, Tinted Glass, Pulse Wipers, Tilt Wheel, Cruise Control, Gauges, and More

List Price \$15,356  
**CUSTOMER PRICE**

**\$12,788\***

\* Excludes Freight

**USED TRUCK SPECIALS**

**'84 NISSAN LONG BED**

5 Spd., PS, PB, Tan, 69,002 Mi.

**\$3,300**

**'76 GMC SUBURBAN 4x4**

8 Cyl., AT, PS, PB, Gray

**\$3,650**

**'80 CHEVY SCOTSDALE 4x4**

8 Cyl., AT, PS, PB, Red

**\$5,050**

**'83 HIGH SIERRA 2500**

8 Cyl., 4 Spd., PS, PB, A/C, Black

**\$6,000**

Tax & tags extra.

**NOBODY ELSE COMES CLOSE**

**JONES**

**GMC TRUCKS**  
\*Includes rebates, excludes tax, tags & freight.

1335 Manheim Pike  
Lancaster, PA

**(717) 394-0711**

**RINGO HILL FARMS**



**Utility Trailers**

From \$498

From \$1600

From \$1600

From \$1800

From \$3000

From \$3000

**Enclosed Trailers**

From \$1800

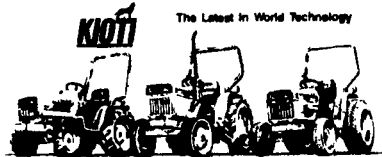
From 1800

**Dump Trailers**

**Horse & Stock Trailers**

From \$1900

**Specialists In Landscape & Farm Equipment**



- LB1714**
  - 17 horsepower fuel-efficient diesel
  - Power windows transmission with clutch shift
  - 2 wheel drive
  - Age-lasting styling
- LB2202**
  - 22 horsepower over-cast steel
  - 2 wheel drive
  - Low maintenance
  - Best for flat repairs and loaders
- LB2204**
  - 2 wheel drive
  - 22 horsepower fuel efficient diesel
  - Low, high capacity hydraulic power
  - Category 1.2 gear shift



**Cub Cadet. The tough tractor that's right for you.**



**Commercial Mowers**

Ferris ProCut Commercial Mowers  
Kohler Magnum Engine  
Heavy Duty Commercial  
Walk Behind & Riders  
Hydrostatic Drive

**Farm & Landscape Equipment**



Rotary cutters From \$500  
Rota-Tillers From \$900  
Grader blades From \$195  
Post hole diggers From \$450

**Log Splitter**

8 HP industrial engine, 17 ton two stage hyd 5 gal hyd reservoir, highway tires 2 ball hitch  
**\$900**

**Trailer Parts In Stock**

- Stone Rakes
- Box Blades
- Scarifiers
- Fertilizer Spreaders
- Flail Mowers
- Finish Estate Mowers
- Pre-Seeders
- Mulchers
- Sprayers
- Truck Hoists
- Cement Mixers
- Tine Harrows
- Manure Spreaders
- Tree Planters
- Tractor-Truck Chains
- Chipper-Shredders

**Meyer SNOW AND ICE CONTROL EQUIPMENT**

**Used Tractors  
Used Hoes & Loaders  
Used Dump Trucks**

Snow Mobile Trailers  
Car Haulers  
Car - Totes

**Business Hours: Mon-Sat 8-5  
SEND FOR FREE CATALOG**

**RINGO HILL FARMS EQUIPMENT CO.**

ROUTE 212, PLEASANT VALLEY  
QUAKERTOWN, PA  
**215-346-7340**

